

# Converting Colors

Hex(5D2B76)

Have a look what the booklet for  
Hex(5D2B76) contains.

<b>Hex(5D2B76)</b> .....	3
<i><b>Conversions</b></i> .....	4
<i><b>Details</b></i> .....	6
<i><b>Harmonies</b></i> .....	11
<i><b>Previews</b></i> .....	23
<i><b>Color Blindness Simulation</b></i> .....	26
<i><b>CSS Examples</b></i> .....	29

# Color

**Hex(5D2B76)**

# Conversions

## Conversions Part 1

<b>Format</b>	<b>Color</b>
Hex	5D2B76
RGB	93, 43, 118
RGB Percent	36%, 17%, 46%
CMY	0.6353, 0.8314, 0.5373
CMYK	0.21, 0.64, 0.00, 0.54
HSL	280°, 47%, 32%
HSV	280°, 64%, 46%
XYZ	8.6481, 5.3629, 17.7189
YIQ	66.5000, 5.7250, 33.9250

# Conversions

## Conversions Part 2

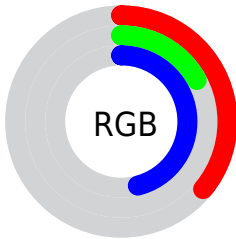
<b>Format</b>	<b>Color</b>
<b>R<sub>YB</sub></b>	93, 43, 118
Decimal	6105974
CIE <sub>Lab</sub>	27.74, 36.33, -33.77
CIE <sub>LCh</sub>	28, 49.603, 317.094
Yxy	5.3629, 0.2726, 0.1690
Android (android.graphics.Color)	4284296054 (0xFF5D2B76)
YUV	66.5000, 25.3895, 23.2405
Hunter-Lab	23.1580, 26.1324, -29.1540

# Details

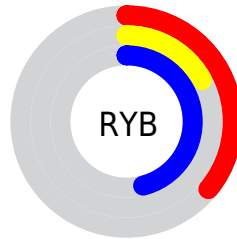
The Hex color **5D2B76** is a dark color, and the websafe version is hex **663366**. A complement of this color would be **44762B**, and the grayscale version is **424242**.

A 20% lighter version of the original color is **925CAB**, and **2B0045** is the 20% darker color. If you saturate the color by 10%, you get **591F76**, and if you desaturate by 10%, it is **613776**.

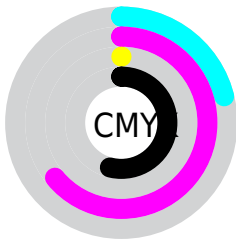
# Distribution



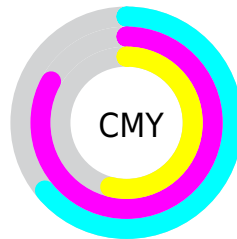
- Red (36%)
- Green (17%)
- Blue (46%)



- Red (36%)
- Yellow (17%)
- Blue (46%)



- Cyan (21%)
- Magenta (64%)
- Yellow (0%)
- Black (54%)



- Cyan (64%)
- Magenta (83%)
- Yellow (54%)

# Brightness & Saturation Gradients

These gradients show how the Hex color 5D2B76 changes by changing the brightness by 10 percent. The first figure shows a shift by +10% for each color and the second figure -10%.

Similar to the brightness gradients but the following saturation gradients show a change of the Hex color 5D2B76 by changing the saturation by 10% instead.



 5D2B76

 5D2B76

FFFFFF

 44135D

 925CAB

 2B0045

 AD75C6

 16002E

 C98FE2

 000118

 E5AAFF

 000000

 FFC6FF

 FFE2FF

 5D2B76

 5D2B76

 591F76

 613776

■ 551376

■ 654376

■ 510876

■ 694E76

■ 4F0076

■ 6D5A76

■ 716676

■ 757276

■ 797E76

■ 7C8976

■ 809576

# Harmonies

## Analogous

The Analogous color harmony consists of three colors that are next to each other on the color wheel.



003F8B



5D2B76



7C1354

# Triad

The Triadic color harmony groups three colors that are evenly spaced from another and form a triangle on the color wheel.



5D2B76



5F3A00



005257

# Complementary

The Complementary color scheme is a pair of colors which are on the opposite of each other on the color wheel.



5D2B76



44762B

# Split Complementary

Split-complementary colors differ from the complementary color scheme. The scheme consists of three colors, the original color and two neighbors of the complement color.



00512F



5D2B76



3D4600

# Square

The Square scheme is like the rectangle color scheme, but the four colors are evenly spaced on the color wheel.



5D2B76



772707



004D03



005079

# Rectangle

The Rectangle color scheme consists of four colors that form a rectangle on the color wheel.



5D2B76



830B3A



004D03



00524A



# Sweetspot

The Sweet Spot groups the original color and five complimentary colors.



5D2B76



8F7C99



2B4476



473B4D



CCCCCC



4D4D4D



# Same Dimension

The Same Dimension uses a secret algorithm to generate beautiful new colors.



5D2B76



722599



762B6B



39353B



52007A



A700FA



# Inverse Universe

The Inverse Universe completely reimagines the original color for something new.



762B44



99254B



2B7636



3B3537



7A0029

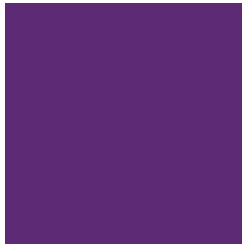


FA0053



# Previews

## White Background



This preview shows how the Hex color 5D2B76 looks on a white background.

## Color Contrast Check

Large Text (above 18pt) WCAG AA ✓ Pass

Any Text WCAG AA ✓ Pass

Large Text (above 18pt) WCAG AAA ✓ Pass

Any Text WCAG AAA ✓ Pass

# Black Background



## Color Contrast Check

Large Text (above 18pt) WCAG AA × Fail

Any Text WCAG AA × Fail

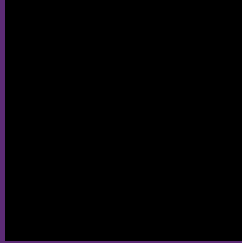
Large Text (above 18pt) WCAG AAA × Fail

Any Text WCAG AAA × Fail

If you want to check with other color combinations, try the [Color Contrast Checker](#).



## Hex 5D2B76 Background



This preview shows how black text looks on a background with the Hex color 5D2B76.



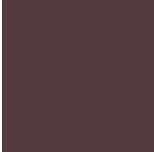
This preview shows how white text looks on a background with the Hex color 5D2B76.

# Color Blindness Simulation

Color vision deficiency is a very complex topic, and I could not describe the different causes any better than Wikipedia does, so if you want to learn more, you should check out their [article about color blindness](#).

## Dichromacy





**Tritanopia**  
543B40

# Trichromacy



**Original Color**  
5D2B76



**Protanomaly**  
223881



**Deuteranomaly**  
363A73



**Tritanomaly**  
573554

# Monochromacy



**Original Color**  
5D2B76



**Achromatopsia**  
434343



**Achromatomaly**  
4C3A56

# CSS Examples

## Text

The CSS property to change the color of the text to Hex 5D2B76 is called "color". The color property can be set on classes, ids or directly on the HTML element.

This example shows how text in the color #5D2B76 looks like.

```
.text, #text, p{  
    color:#5D2B76  
}
```

If you want to add a text shadow in that color use the text-shadow property, you can generate a text shadow directly with our [CSS Text Shadow Generator](#).

Here you see how black text with a 4 pixel #5D2B76 colored shadow looks like.

```
.shadow{ text-shadow: 4px 4px 2px #5D2B76
}
```

## Border

The CSS property to change the border of an element to Hex 5D2B76 is called "border". The border property can be set on classes, ids or directly on the HTML element.

This example shows the color as border, it can be applied via the CSS property "border" or "border-color".

```
.border, #border, table{ border:4px solid
#5D2B76 }
```

If only the border color should be changed use the property `border-color`.

```
.border{ border-color:#5D2B76 }
```

If you want to add a box shadow in that color use:

Here you see how a box with a 4 pixel #5D2B76 colored shadow looks like.

```
.boxshadow{ -moz-box-shadow:4px 4px 4px  
4px #5D2B76; -webkit-box-shadow:4px 4px  
4px 4px #5D2B76; box-shadow:4px 4px 4px  
4px #5D2B76 }
```

# Background

The CSS property to change the background color of an element to Hex 5D2B76 is called "background". The background property can be set on classes, ids or directly on the HTML element.

```
.background, #background, body{  
background:#5D2B76 }
```

If only the background color should be changed can be used:

```
.background{ background-color:#5D2B76 }
```

This example shows the color as background, it is applied via the CSS property "background".

To optimize and compress your CSS code, you can use our [online CSS compressor and optimizer](#) based on csstidy. If you want to create a linear or radial gradient as background or border, check our [CSS Gradient Generator](#).



# Hey! You found this booklet interesting? Support Converting Colors with the new Membership Option!

The pro membership hides all ads, plus gives you double the colors in the color bucket, and more awesome pro features!

**[Learn more, Memberships starting at \\$2.50/m!](#)**

**Follow me  
on Twitter!**

@ConvertingColor