

Converting Colors

Hex(5D4218)

Have a look what the booklet for
Hex(5D4218) contains.

Hex(5D4218)	3
<i>Conversions</i>	4
<i>Details</i>	6
<i>Harmonies</i>	11
<i>Previews</i>	23
<i>Color Blindness Simulation</i>	26
<i>CSS Examples</i>	29

Color

Hex(5D4218)

Conversions

Conversions Part 1

Format	Color
Hex	5D4218
RGB	93, 66, 24
RGB Percent	36%, 26%, 9%
CMY	0.6353, 0.7412, 0.9059
CMYK	0.00, 0.29, 0.74, 0.64
HSL	37°, 59%, 23%
HSV	37°, 74%, 36%
XYZ	6.6273, 6.2895, 1.7289
YIQ	69.2850, 29.5740, -7.3380

Conversions

Conversions Part 2

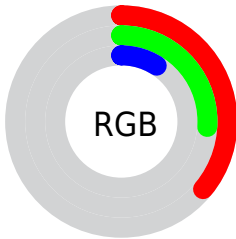
Format	Color
R_{YB}	68, 93, 24
Decimal	6111768
CIE Lab	30.13, 6.95, 29.27
CIE LCh	30, 30.083, 76.637
Yxy	6.2895, 0.4525, 0.4294
Android (android.graphics.Color)	4284301848 (0xFF5D4218)
YUV	69.2850, -22.3255, 20.7981
Hunter-Lab	25.0789, 3.2817, 13.4680

Details

The Hex color **5D4218** is a dark color, and the websafe version is hex **663300**. A complement of this color would be **18335D**, and the grayscale version is **454545**.

A 20% lighter version of the original color is **927245**, and **2B1700** is the 20% darker color. If you saturate the color by 10%, you get **5D3E0F**, and if you desaturate by 10%, it is **5D4621**.

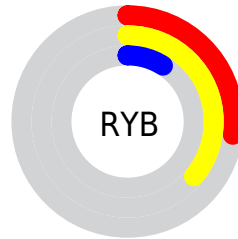
Distribution



Red (36%)

Green (26%)

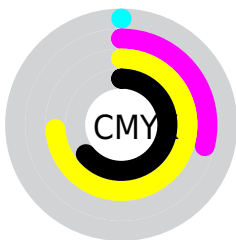
Blue (9%)



Red (27%)

Yellow (36%)

Blue (9%)

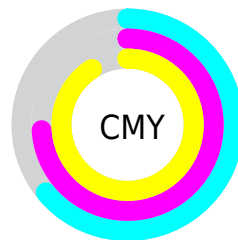


Cyan (0%)

Magenta (29%)

Yellow (74%)

Black (64%)



Cyan (64%)

Magenta (74%)

Yellow (91%)

Brightness & Saturation Gradients

These gradients show how the Hex color 5D4218 changes by changing the brightness by 10 percent. The first figure shows a shift by +10% for each color and the second figure -10%.

Similar to the brightness gradients but the following saturation gradients show a change of the Hex color 5D4218 by changing the saturation by 10% instead.

 5D4218

 5D4218

FFFFFF

 442C00

 927245

 2B1700

 AE8B5E

 110000

 CAA677

 000000

 E7C191

 FFDCAB

 FFF9C7

 FFFFE3

 5D4218

 5D4218

■ 5D3E0F

■ 5D4621

■ 5D3B05

■ 5D492B

■ 5D3900

■ 5D4D34

■ 5D513D

■ 5D5446

■ 5D5850

■ 5D5B59

■ 5D5F62

■ 5D636C

Harmonies

Analogous

The Analogous color harmony consists of three colors that are next to each other on the color wheel.



6C3926



5D4218



484A17

Triad

The Triadic color harmony groups three colors that are evenly spaced from another and form a triangle on the color wheel.



5D4218



005354



593B67

Complementary

The Complementary color scheme is a pair of colors which are on the opposite of each other on the color wheel.



5D4218



18335D

Split Complementary

Split-complementary colors differ from the complementary color scheme. The scheme consists of three colors, the original color and two neighbors of the complement color.



364574



5D4218



005168

Square

The Square scheme is like the rectangle color scheme, but the four colors are evenly spaced on the color wheel.



5D4218



00523B



004C74



6D3452

Rectangle

The Rectangle color scheme consists of four colors that form a rectangle on the color wheel.



5D4218



374E20



004C74



4F3F6D

Sweetspot

The Sweet Spot groups the original color and five complimentary colors.



5D4218



786E5D



5D1834



3D372D



BDBDBD



3D3D3D

Same Dimension

The Same Dimension uses a secret algorithm to generate beautiful new colors.



5D4218



784E0D



565D18



2E2C29



6E4300



ED9000

Inverse Universe

The Inverse Universe completely reimagines the original color for something new.



18335D



0D3778



1F185D



292B2E



002B6E



005DED

Previews

White Background



This preview shows how the Hex color 5D4218 looks on a white background.

Color Contrast Check

Large Text (above 18pt) WCAG AA ✓ Pass

Any Text WCAG AA ✓ Pass

Large Text (above 18pt) WCAG AAA ✓ Pass

Any Text WCAG AAA ✓ Pass

Black Background



Color Contrast Check

Large Text (above 18pt) WCAG AA × Fail

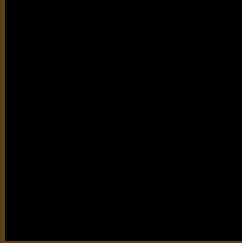
Any Text WCAG AA × Fail

Large Text (above 18pt) WCAG AAA × Fail

Any Text WCAG AAA × Fail

If you want to check with other color combinations, try the [Color Contrast Checker](#).

Hex 5D4218 Background



This preview shows how black text looks on a background with the Hex color 5D4218.



This preview shows how white text looks on a background with the Hex color 5D4218.

Color Blindness Simulation

Color vision deficiency is a very complex topic, and I could not describe the different causes any better than Wikipedia does, so if you want to learn more, you should check out their [article about color blindness](#).

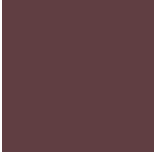
Dichromacy



Original Color
5D4218

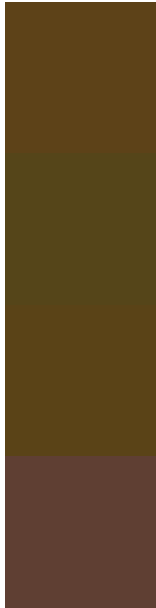
Protanopia
504719

Deuteranopia
594417



Tritanopia
603E42

Trichromacy



Original Color
5D4218

Protanomaly
554519

Deuteranomaly
5A4317

Tritanomaly
5F3F33

Monochromacy



Original Color
5D4218

Achromatopsia
454545

Achromatomaly
4E4435

CSS Examples

Text

The CSS property to change the color of the text to Hex 5D4218 is called "color". The color property can be set on classes, ids or directly on the HTML element.

This example shows how text in the color #5D4218 looks like.

```
.text, #text, p{  
    color:#5D4218  
}
```

If you want to add a text shadow in that color use the text-shadow property, you can generate a text shadow directly with our [CSS Text Shadow Generator](#).

Here you see how black text with a 4 pixel #5D4218 colored shadow looks like.

```
.shadow{ text-shadow: 4px 4px 2px #5D4218  
}
```

Border

The CSS property to change the border of an element to Hex 5D4218 is called "border". The border property can be set on classes, ids or directly on the HTML element.

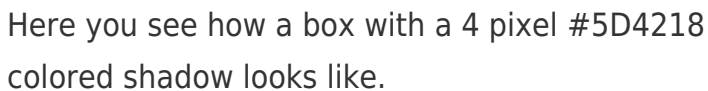
This example shows the color as border, it can be applied via the CSS property "border" or "border-color".

```
.border, #border, table{ border:4px solid  
#5D4218 }
```

If only the border color should be changed use the property `border-color`.

```
.border{ border-color:#5D4218 }
```

If you want to add a box shadow in that color use:



Here you see how a box with a 4 pixel #5D4218 colored shadow looks like.

```
.boxshadow{ -moz-box-shadow:4px 4px 4px  
4px #5D4218; -webkit-box-shadow:4px 4px  
4px 4px #5D4218; box-shadow:4px 4px 4px  
4px #5D4218 }
```

Background

The CSS property to change the background color of an element to Hex 5D4218 is called "background". The background property can be set on classes, ids or directly on the HTML element.

```
.background, #background, body{  
background:#5D4218 }
```

If only the background color should be changed can be used:

```
.background{ background-color:#5D4218 }
```

This example shows the color as background, it is applied via the CSS property "background".

To optimize and compress your CSS code, you can use our [online CSS compressor and optimizer](#) based on csstidy. If you want to create a linear or radial gradient as background or border, check our [CSS Gradient Generator](#).

Hey! You found this booklet interesting? Support Converting Colors with the new Membership Option!

The pro membership hides all ads, plus gives you double the colors in the color bucket, and more awesome pro features!

[Learn more, Memberships starting at \\$2.50/m!](#)

**Follow me
on Twitter!**

@ConvertingColor