

Converting Colors

Hex(5D434D)

Have a look what the booklet for
Hex(5D434D) contains.

Hex(5D434D)	3
<i>Conversions</i>	4
<i>Details</i>	6
<i>Harmonies</i>	11
<i>Previews</i>	23
<i>Color Blindness Simulation</i>	26
<i>CSS Examples</i>	29

Color

Hex(5D434D)

Conversions

Conversions Part 1

Format	Color
Hex	5D434D
RGB	93, 67, 77
RGB Percent	36%, 26%, 30%
CMY	0.6353, 0.7373, 0.6980
CMYK	0.00, 0.28, 0.17, 0.64
HSL	337°, 16%, 31%
HSV	337°, 28%, 36%
XYZ	7.8609, 6.8773, 7.9343
YIQ	75.9140, 12.2860, 8.6220

Conversions

Conversions Part 2

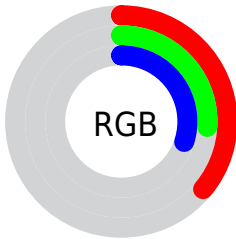
Format	Color
RYB	93, 67, 77
Decimal	6112077
CIELab	31.53, 12.99, -1.60
CIELCh	32, 13.090, 352.997
Yxy	6.8773, 0.3467, 0.3033
Android (android.graphics.Color)	4284302157 (0xFF5D434D)
YUV	75.9140, 0.5354, 14.9844
Hunter-Lab	26.2246, 7.6130, 0.4189

Details

The Hex color **5D434D** is a dark color, and the websafe version is hex **663333**. A complement of this color would be **435D53**, and the grayscale version is **4C4C4C**.

A 20% lighter version of the original color is **90737E**, and **2E1821** is the 20% darker color. If you saturate the color by 10%, you get **5D3A47**, and if you desaturate by 10%, it is **5D4C53**.

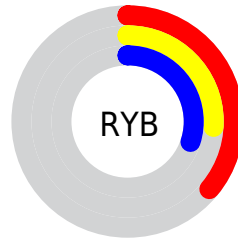
Distribution



Red (36%)

Green (26%)

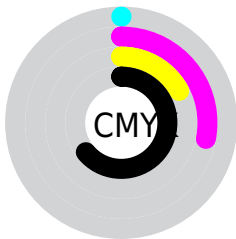
Blue (30%)



Red (36%)

Yellow (26%)

Blue (30%)

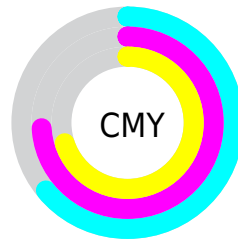


Cyan (0%)

Magenta (28%)

Yellow (17%)

Black (64%)



Cyan (64%)

Magenta (74%)

Yellow (70%)

Brightness & Saturation Gradients

These gradients show how the Hex color 5D434D changes by changing the brightness by 10 percent. The first figure shows a shift by +10% for each color and the second figure -10%.

Similar to the brightness gradients but the following saturation gradients show a change of the Hex color 5D434D by changing the saturation by 10% instead.

■ 5D434D

■ 5D434D

FFFFFF

■ 452D36

■ 90737E

■ 2E1821

■ AA8D98

■ 1C000A

■ C6A7B2

■ 000000

■ E2C3CE

■ FFDEEA

■ FFFBFF

■ 5D434D

■ 5D434D

■ 5D3A47

■ 5D4C53

■ 5D3042

■ 5D5658

■ 5D273C

■ 5D5F5E

■ 5D1E36

■ 5D6864

■ 5D1530

■ 5D726A

■ 5D0B2B

■ 5D7B6F

■ 5D0225

■ 5D8475

■ 5D0024

■ 5D8D7B

■ 5D9781

Harmonies

Analogous

The Analogous color harmony consists of three colors that are next to each other on the color wheel.



554557



5D434D



5F4343

Triad

The Triadic color harmony groups three colors that are evenly spaced from another and form a triangle on the color wheel.



5D434D



494C37



304E5A

Complementary

The Complementary color scheme is a pair of colors which are on the opposite of each other on the color wheel.



5D434D



435D53

Split Complementary

Split-complementary colors differ from the complementary color scheme. The scheme consists of three colors, the original color and two neighbors of the complement color.



2D5052



5D434D



3E4E3E

Square

The Square scheme is like the rectangle color scheme, but the four colors are evenly spaced on the color wheel.



5D434D



544936



335047



3B4C5E

Rectangle

The Rectangle color scheme consists of four colors that form a rectangle on the color wheel.



5D434D



5E443D



335047



2E4F58

Sweetspot

The Sweet Spot groups the original color and five complimentary colors.



5D434D



786E72



53435D



3D3739



BDBDBD



3D3D3D

Same Dimension

The Same Dimension uses a secret algorithm to generate beautiful new colors.



5D434D



784F5F



5D4643



2E292B



6E002A



ED005B

Inverse Universe

The Inverse Universe completely reimagines the original color for something new.



5D434D



784F5F



435A5D



2E292B



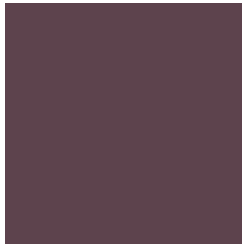
6E002A



ED005B

Previews

White Background



This preview shows how the Hex color 5D434D looks on a white background.

Color Contrast Check

Large Text (above 18pt) WCAG AA ✓ Pass

Any Text WCAG AA ✓ Pass

Large Text (above 18pt) WCAG AAA ✓ Pass

Any Text WCAG AAA ✓ Pass

Black Background



Color Contrast Check

Large Text (above 18pt) WCAG AA × Fail

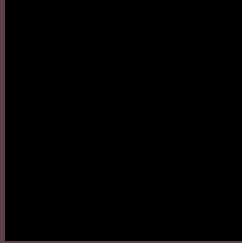
Any Text WCAG AA × Fail

Large Text (above 18pt) WCAG AAA × Fail

Any Text WCAG AAA × Fail

If you want to check with other color combinations, try the [Color Contrast Checker](#).

Hex 5D434D Background



This preview shows how black text looks on a background with the Hex color 5D434D.



This preview shows how white text looks on a background with the Hex color 5D434D.

Color Blindness Simulation

Color vision deficiency is a very complex topic, and I could not describe the different causes any better than Wikipedia does, so if you want to learn more, you should check out their [article about color blindness](#).

Dichromacy



Original Color
5D434D

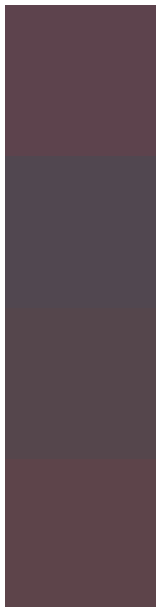
Protanopia
4A4A51

Deuteranopia
51484C



Tritanopia
5D4449

Trichromacy



Original Color

5D434D

Protanomaly

514750

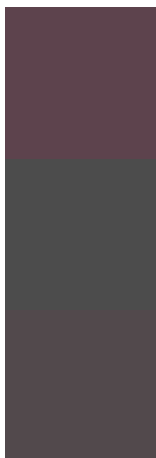
Deuteranomaly

55464C

Tritanomaly

5D444A

Monochromacy



Original Color

5D434D

Achromatopsia

4C4C4C

Achromatomaly

52494C

CSS Examples

Text

The CSS property to change the color of the text to Hex 5D434D is called "color". The color property can be set on classes, ids or directly on the HTML element.

This example shows how text in the color #5D434D looks like.

```
.text, #text, p{  
    color:#5D434D  
}
```

If you want to add a text shadow in that color use the text-shadow property, you can generate a text shadow directly with our [CSS Text Shadow Generator](#).

Here you see how black text with a 4 pixel #5D434D colored shadow looks like.

```
.shadow{ text-shadow: 4px 4px 2px #5D434D
}
```

Border

The CSS property to change the border of an element to Hex 5D434D is called "border". The border property can be set on classes, ids or directly on the HTML element.

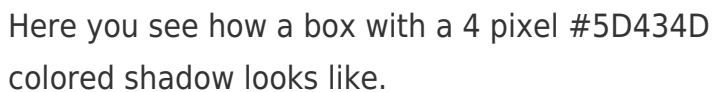
This example shows the color as border, it can be applied via the CSS property "border" or "border-color".

```
.border, #border, table{ border:4px solid
#5D434D }
```

If only the border color should be changed use the property `border-color`.

```
.border{ border-color:#5D434D }
```

If you want to add a box shadow in that color use:



Here you see how a box with a 4 pixel #5D434D colored shadow looks like.

```
.boxshadow{ -moz-box-shadow:4px 4px 4px  
4px #5D434D; -webkit-box-shadow:4px 4px  
4px 4px #5D434D; box-shadow:4px 4px 4px  
4px #5D434D }
```

Background

The CSS property to change the background color of an element to Hex 5D434D is called "background". The background property can be set on classes, ids or directly on the HTML element.

```
.background, #background, body{  
background:#5D434D }
```

If only the background color should be changed can be used:

```
.background{ background-color:#5D434D }
```

This example shows the color as background, it is applied via the CSS property "background".

To optimize and compress your CSS code, you can use our [online CSS compressor and optimizer](#) based on csstidy. If you want to create a linear or radial gradient as background or border, check our [CSS Gradient Generator](#).

Hey! You found this booklet interesting? Support Converting Colors with the new Membership Option!

The pro membership hides all ads, plus gives you double the colors in the color bucket, and more awesome pro features!

[Learn more, Memberships starting at \\$2.50/m!](#)

**Follow me
on Twitter!**

@ConvertingColor