

Converting Colors

Hex(5E404C)

Have a look what the booklet for
Hex(5E404C) contains.

Hex(5E404C)	3
<i>Conversions</i>	4
<i>Details</i>	6
<i>Harmonies</i>	11
<i>Previews</i>	23
<i>Color Blindness Simulation</i>	26
<i>CSS Examples</i>	29

Color

Hex(5E404C)

Conversions

Conversions Part 1

Format	Color
Hex	5E404C
RGB	94, 64, 76
RGB Percent	37%, 25%, 30%
CMY	0.6314, 0.7490, 0.7020
CMYK	0.00, 0.32, 0.19, 0.63
HSL	336°, 19%, 31%
HSV	336°, 32%, 37%
XYZ	7.7540, 6.5683, 7.6966
YIQ	74.3380, 14.0280, 10.0920

Conversions

Conversions Part 2

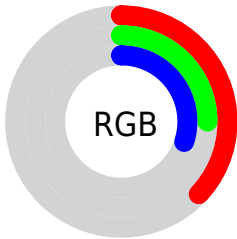
Format	Color
RYB	94, 64, 76
Decimal	6176844
CIELab	30.80, 15.12, -2.00
CIELCh	31, 15.247, 352.465
Yxy	6.5683, 0.3522, 0.2983
Android (android.graphics.Color)	4284366924 (0xFF5E404C)
YUV	74.3380, 0.8194, 17.2436
Hunter-Lab	25.6287, 9.1554, 0.1345

Details

The Hex color **5E404C** is a dark color, and the websafe version is hex **663333**. A complement of this color would be **405E52**, and the grayscale version is **4A4A4A**.

A 20% lighter version of the original color is **91707D**, and **2F1520** is the 20% darker color. If you saturate the color by 10%, you get **5E3746**, and if you desaturate by 10%, it is **5E4952**.

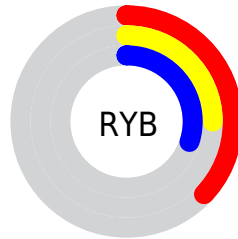
Distribution



 Red (37%)

 Green (25%)

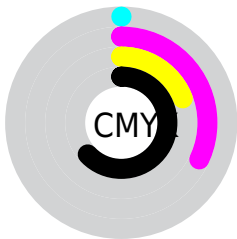
 Blue (30%)



 Red (37%)

 Yellow (25%)

 Blue (30%)

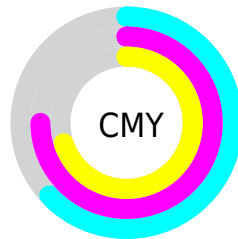


 Cyan (0%)

 Magenta (32%)

 Yellow (19%)

 Black (63%)



 Cyan (63%)

 Magenta (75%)

 Yellow (70%)

Brightness & Saturation Gradients

These gradients show how the Hex color 5E404C changes by changing the brightness by 10 percent. The first figure shows a shift by +10% for each color and the second figure -10%.

Similar to the brightness gradients but the following saturation gradients show a change of the Hex color 5E404C by changing the saturation by 10% instead.

■ 5E404C

■ 5E404C

FFFFFF

■ 462A35

■ 91707D

■ 2F1520

■ AC8A97

■ 1D0008

■ C7A4B1

■ 000000

■ E3BFCD

■ FFD8E9

■ FFF8FF

■ 5E404C

■ 5E404C

■ 5E3746

■ 5E4952

■ 5E2D41

■ 5E5357

■ 5E243B

■ 5E5C5D

■ 5E1A35

■ 5E6663

■ 5E1130

■ 5E6F68

■ 5E082A

■ 5E786E

■ 5E0026

■ 5E8273

■ 5E8B79

■ 5E957F

Harmonies

Analogous

The Analogous color harmony consists of three colors that are next to each other on the color wheel.



554257



5E404C



614040

Triad

The Triadic color harmony groups three colors that are evenly spaced from another and form a triangle on the color wheel.



5E404C



484B32



274E5B

Complementary

The Complementary color scheme is a pair of colors which are on the opposite of each other on the color wheel.



5E404C



405E52

Split Complementary

Split-complementary colors differ from the complementary color scheme. The scheme consists of three colors, the original color and two neighbors of the complement color.



244F51



5E404C



3A4D3A

Square

The Square scheme is like the rectangle color scheme, but the four colors are evenly spaced on the color wheel.



5E404C



544731



2D4F45



354B60

Rectangle

The Rectangle color scheme consists of four colors that form a rectangle on the color wheel.



5E404C



5F4239



2D4F45



254E58

Sweetspot

The Sweet Spot groups the original color and five complimentary colors.



5E404C



7A6E73



52405E



3D3639



BDBDBD



3D3D3D

Same Dimension

The Same Dimension uses a secret algorithm to generate beautiful new colors.



5E404C



7A4C5E



5E4340



2E292B



6E002C



ED005F

Inverse Universe

The Inverse Universe completely reimagines the original color for something new.



5E404C



7A4C5E



405B5E



2E292B



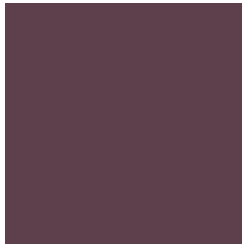
6E002C



ED005F

Previews

White Background



This preview shows how the Hex color 5E404C looks on a white background.

Color Contrast Check

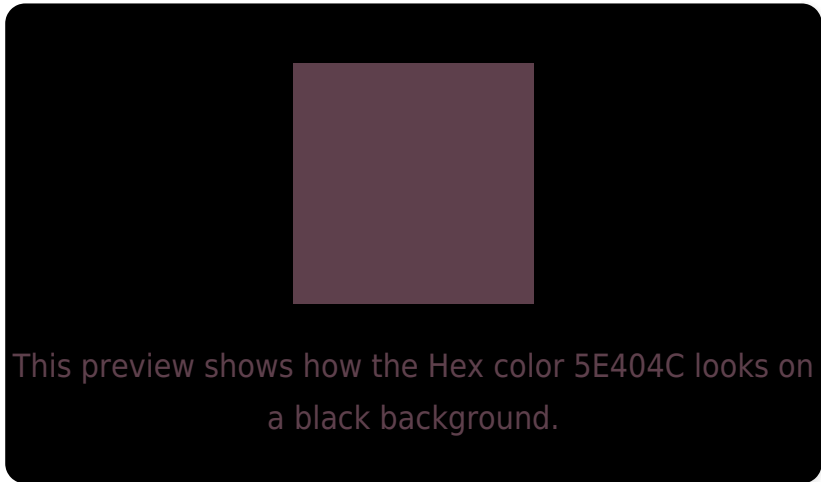
Large Text (above 18pt) WCAG AA ✓ Pass

Any Text WCAG AA ✓ Pass

Large Text (above 18pt) WCAG AAA ✓ Pass

Any Text WCAG AAA ✓ Pass

Black Background



Color Contrast Check

Large Text (above 18pt) WCAG AA × Fail

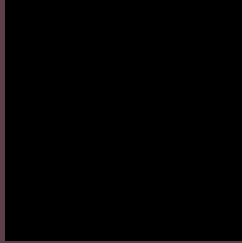
Any Text WCAG AA × Fail

Large Text (above 18pt) WCAG AAA × Fail

Any Text WCAG AAA × Fail

If you want to check with other color combinations, try the [Color Contrast Checker](#).

Hex 5E404C Background



This preview shows how black text looks on a background with the Hex color 5E404C.



This preview shows how white text looks on a background with the Hex color 5E404C.

Color Blindness Simulation

Color vision deficiency is a very complex topic, and I could not describe the different causes any better than Wikipedia does, so if you want to learn more, you should check out their [article about color blindness](#).

Dichromacy



Original Color
5E404C

Protanopia
484851

Deuteranopia
4F474B



Tritanopia
5D4146

Trichromacy



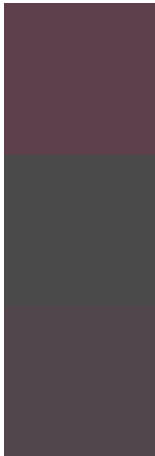
Original Color
5E404C

Protanomaly
50454F

Deuteranomaly
54444B

Tritanomaly
5D4148

Monochromacy



Original Color
5E404C

Achromatopsia
4A4A4A

Achromatomaly
51464B

CSS Examples

Text

The CSS property to change the color of the text to Hex 5E404C is called "color". The color property can be set on classes, ids or directly on the HTML element.

This example shows how text in the color #5E404C looks like.

```
.text, #text, p{  
    color:#5E404C  
}
```

If you want to add a text shadow in that color use the text-shadow property, you can generate a text shadow directly with our [CSS Text Shadow Generator](#).

Here you see how black text with a 4 pixel #5E404C colored shadow looks like.

```
.shadow{ text-shadow: 4px 4px 2px #5E404C
}
```

Border

The CSS property to change the border of an element to Hex 5E404C is called "border". The border property can be set on classes, ids or directly on the HTML element.

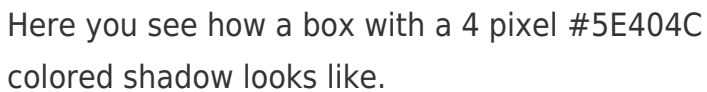
This example shows the color as border, it can be applied via the CSS property "border" or "border-color".

```
.border, #border, table{ border:4px solid
#5E404C }
```

If only the border color should be changed use the property `border-color`.

```
.border{ border-color:#5E404C }
```

If you want to add a box shadow in that color use:



Here you see how a box with a 4 pixel #5E404C colored shadow looks like.

```
.boxshadow{ -moz-box-shadow:4px 4px 4px  
4px #5E404C; -webkit-box-shadow:4px 4px  
4px 4px #5E404C; box-shadow:4px 4px 4px  
4px #5E404C }
```

Background

The CSS property to change the background color of an element to Hex 5E404C is called "background". The background property can be set on classes, ids or directly on the HTML element.

```
.background, #background, body{  
background:#5E404C }
```

If only the background color should be changed can be used:

```
.background{ background-color:#5E404C }
```

This example shows the color as background, it is applied via the CSS property "background".

To optimize and compress your CSS code, you can use our [online CSS compressor and optimizer](#) based on csstidy. If you want to create a linear or radial gradient as background or border, check our [CSS Gradient Generator](#).

Hey! You found this booklet interesting? Support Converting Colors with the new Membership Option!

The pro membership hides all ads, plus gives you double the colors in the color bucket, and more awesome pro features!

[Learn more, Memberships starting at \\$2.50/m!](#)

**Follow me
on Twitter!**

@ConvertingColor