

Converting Colors

Hex(5F2983)

Have a look what the booklet for
Hex(5F2983) contains.

Hex(5F2983)	3
<i>Conversions</i>	4
<i>Details</i>	6
<i>Harmonies</i>	11
<i>Previews</i>	23
<i>Color Blindness Simulation</i>	26
<i>CSS Examples</i>	29

Color

Hex(5F2983)

Conversions

Conversions Part 1

Format	Color
Hex	5F2983
RGB	95, 41, 131
RGB Percent	37%, 16%, 51%
CMY	0.6275, 0.8392, 0.4863
CMYK	0.27, 0.69, 0.00, 0.49
HSL	276°, 52%, 34%
HSV	276°, 69%, 51%
XYZ	9.6090, 5.6575, 22.0583
YIQ	67.4060, 3.2940, 39.4380

Conversions

Conversions Part 2

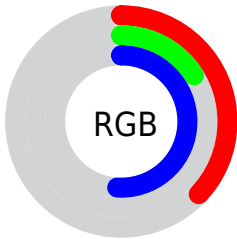
Format	Color
R_{YB}	95, 41, 131
Decimal	6236547
CIE _{Lab}	28.53, 40.98, -40.68
CIE _{LCh}	29, 57.746, 315.207
Yxy	5.6575, 0.2574, 0.1516
Android (android.graphics.Color)	4284426627 (0xFF5F2983)
YUV	67.4060, 31.3518, 24.1999
Hunter-Lab	23.7854, 30.4871, -38.3349

Details

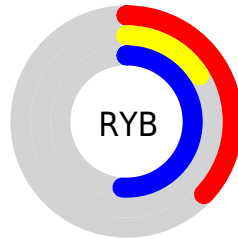
The Hex color **5F2983** is a dark color, and the websafe version is hex **663399**. A complement of this color would be **4D8329**, and the grayscale version is **434343**.

A 20% lighter version of the original color is **945AB9**, and **2B0051** is the 20% darker color. If you saturate the color by 10%, you get **5A1C83**, and if you desaturate by 10%, it is **643683**.

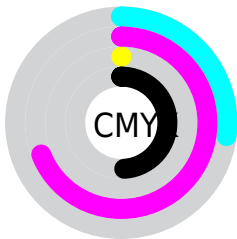
Distribution



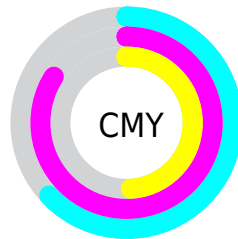
- Red (37%)
- Green (16%)
- Blue (51%)



- Red (37%)
- Yellow (16%)
- Blue (51%)



- Cyan (27%)
- Magenta (69%)
- Yellow (0%)
- Black (49%)



- Cyan (63%)
- Magenta (84%)
- Yellow (49%)

Brightness & Saturation Gradients

These gradients show how the Hex color 5F2983 changes by changing the brightness by 10 percent. The first figure shows a shift by +10% for each color and the second figure -10%.

Similar to the brightness gradients but the following saturation gradients show a change of the Hex color 5F2983 by changing the saturation by 10% instead.

■ 5F2983

■ 5F2983

FFFFFF

■ 450F69

■ 945AB9

■ 2B0051

■ B074D5

■ 160039

■ CC8EF1

■ 000223

■ E9A9FF

■ 000009

■ FFC5FF

■ 000000

■ FFE1FF

■ FFFEFF

■ 5F2983

■ 5F2983

■ 5A1C83

■ 643683

■ 550F83

■ 694383

■ 4F0283

■ 6F5083

■ 4F0083

■ 745D83

■ 796A83

■ 7E7883

■ 848583

■ 899283

■ 8E9F83

Harmonies

Analogous

The Analogous color harmony consists of three colors that are next to each other on the color wheel.



00429B



5F2983



85005B

Triad

The Triadic color harmony groups three colors that are evenly spaced from another and form a triangle on the color wheel.



5F2983



653900



00555A

Complementary

The Complementary color scheme is a pair of colors which are on the opposite of each other on the color wheel.



5F2983



4D8329

Split Complementary

Split-complementary colors differ from the complementary color scheme. The scheme consists of three colors, the original color and two neighbors of the complement color.



00542B



5F2983



3F4800

Square

The Square scheme is like the rectangle color scheme, but the four colors are evenly spaced on the color wheel.



5F2983



811F00



005000



005582

Rectangle

The Rectangle color scheme consists of four colors that form a rectangle on the color wheel.



5F2983



8E003E



005000



00554A

Sweetspot

The Sweet Spot groups the original color and five complimentary colors.



5F2983



9C87AB



294D83



4E4157



D6D6D6



575757

Same Dimension

The Same Dimension uses a secret algorithm to generate beautiful new colors.



5F2983



731FAB



83297A



403C42



4E0082



020003

Inverse Universe

The Inverse Universe completely reimagines the original color for something new.



83294D



AB1F57



298332



423C3E



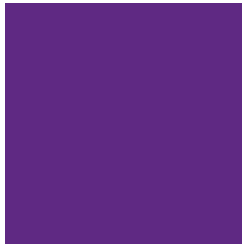
820034



030001

Previews

White Background



This preview shows how the Hex color 5F2983 looks on a white background.

Color Contrast Check

Large Text (above 18pt) WCAG AA ✓ Pass

Any Text WCAG AA ✓ Pass

Large Text (above 18pt) WCAG AAA ✓ Pass

Any Text WCAG AAA ✓ Pass

Black Background



Color Contrast Check

Large Text (above 18pt) WCAG AA × Fail

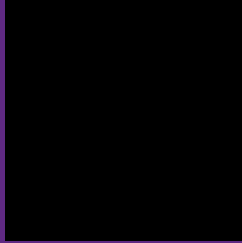
Any Text WCAG AA × Fail

Large Text (above 18pt) WCAG AAA × Fail

Any Text WCAG AAA × Fail

If you want to check with other color combinations, try the [Color Contrast Checker](#).

Hex 5F2983 Background



This preview shows how black text looks on a background with the Hex color 5F2983.



This preview shows how white text looks on a background with the Hex color 5F2983.

Color Blindness Simulation

Color vision deficiency is a very complex topic, and I could not describe the different causes any better than Wikipedia does, so if you want to learn more, you should check out their [article about color blindness](#).

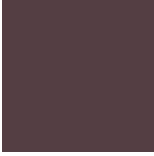
Dichromacy



Original Color
5F2983

Protanopia
00428B

Deuteranopia
00457A



Tritanopia
543E43

Trichromacy



Original Color
5F2983



Protanomaly
233988



Deuteranomaly
233B7D



Tritanomaly
58365A

Monochromacy



Original Color
5F2983



Achromatopsia
434343



Achromatomaly
4D3A5A

CSS Examples

Text

The CSS property to change the color of the text to Hex 5F2983 is called "color". The color property can be set on classes, ids or directly on the HTML element.

This example shows how text in the color #5F2983 looks like.

```
.text, #text, p{  
    color:#5F2983  
}
```

If you want to add a text shadow in that color use the text-shadow property, you can generate a text shadow directly with our [CSS Text Shadow Generator](#).

Here you see how black text with a 4 pixel #5F2983 colored shadow looks like.

```
.shadow{ text-shadow: 4px 4px 2px #5F2983
}
```

Border

The CSS property to change the border of an element to Hex 5F2983 is called "border". The border property can be set on classes, ids or directly on the HTML element.

This example shows the color as border, it can be applied via the CSS property "border" or "border-color".

```
.border, #border, table{ border:4px solid
#5F2983 }
```

If only the border color should be changed use the property `border-color`.

```
.border{ border-color:#5F2983 }
```

If you want to add a box shadow in that color use:

Here you see how a box with a 4 pixel #5F2983 colored shadow looks like.

```
.boxshadow{ -moz-box-shadow:4px 4px 4px  
4px #5F2983; -webkit-box-shadow:4px 4px  
4px 4px #5F2983; box-shadow:4px 4px 4px  
4px #5F2983 }
```

Background

The CSS property to change the background color of an element to Hex 5F2983 is called "background". The background property can be set on classes, ids or directly on the HTML element.

```
.background, #background, body{  
background:#5F2983 }
```

If only the background color should be changed can be used:

```
.background{ background-color:#5F2983 }
```

This example shows the color as background, it is applied via the CSS property "background".

To optimize and compress your CSS code, you can use our [online CSS compressor and optimizer](#) based on csstidy. If you want to create a linear or radial gradient as background or border, check our [CSS Gradient Generator](#).

Hey! You found this booklet interesting? Support Converting Colors with the new Membership Option!

The pro membership hides all ads, plus gives you double the colors in the color bucket, and more awesome pro features!

[Learn more, Memberships starting at \\$2.50/m!](#)

**Follow me
on Twitter!**

@ConvertingColor