

Converting Colors

Hex(5F3A3A)

Have a look what the booklet for
Hex(5F3A3A) contains.

Hex(5F3A3A)	3
<i>Conversions</i>	4
<i>Details</i>	6
<i>Harmonies</i>	11
<i>Previews</i>	23
<i>Color Blindness Simulation</i>	26
<i>CSS Examples</i>	29

Color

Hex(5F3A3A)

Conversions

Conversions Part 1

Format	Color
Hex	5F3A3A
RGB	95, 58, 58
RGB Percent	37%, 23%, 23%
CMY	0.6275, 0.7725, 0.7725
CMYK	0.00, 0.39, 0.39, 0.63
HSL	0°, 24%, 30%
HSV	0°, 39%, 37%
XYZ	6.9961, 5.7645, 4.7469
YIQ	69.0630, 22.0520, 7.8440

Conversions

Conversions Part 2

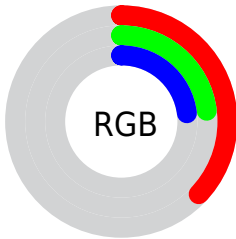
Format	Color
RYB	95, 58, 58
Decimal	6240826
CIELab	28.81, 16.40, 6.87
CIELCh	29, 17.777, 22.730
Yxy	5.7645, 0.3996, 0.3293
Android (android.graphics.Color)	4284430906 (0xFF5F3A3A)
YUV	69.0630, -5.4541, 22.7467
Hunter-Lab	24.0094, 9.9967, 5.0843

Details

The Hex color **5F3A3A** is a dark color, and the websafe version is hex **663333**. A complement of this color would be **3A5F5F**, and the grayscale version is **454545**.

A 20% lighter version of the original color is **936A69**, and **2F0F0F** is the 20% darker color. If you saturate the color by 10%, you get **5F3030**, and if you desaturate by 10%, it is **5F4444**.

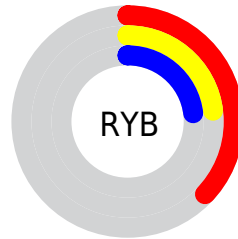
Distribution



 Red (37%)

 Green (23%)

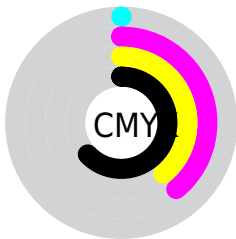
 Blue (23%)



 Red (37%)

 Yellow (23%)

 Blue (23%)

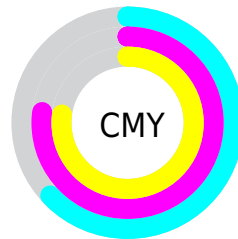


 Cyan (0%)

 Magenta (39%)

 Yellow (39%)

 Black (63%)



 Cyan (63%)

 Magenta (77%)

 Yellow (77%)

Brightness & Saturation Gradients

These gradients show how the Hex color 5F3A3A changes by changing the brightness by 10 percent. The first figure shows a shift by +10% for each color and the second figure -10%.

Similar to the brightness gradients but the following saturation gradients show a change of the Hex color 5F3A3A by changing the saturation by 10% instead.

■ 5F3A3A

■ 5F3A3A

FFFFFF

■ 462424

■ 936A69

■ 2F0F0F

■ AE8382

■ 180001

■ CA9D9C

■ 000000

■ E6B8B7

■ FFD4D3

■ FFF0EF

■ 5F3A3A

■ 5F3A3A

■ 5F3030

■ 5F4444

 5F2727

 5F4D4D

 5F1D1D

 5F5656

 5F1414

 5F6060

 5F0B0B

 5F6A6A

 5F0101

 5F7373

 5F0000

 5F7C7C

 5F8686

 5F9090

Harmonies

Analogous

The Analogous color harmony consists of three colors that are next to each other on the color wheel.



5C3A48



5F3A3A



5A3D2F

Triad

The Triadic color harmony groups three colors that are evenly spaced from another and form a triangle on the color wheel.



5F3A3A



334933



2C465F

Complementary

The Complementary color scheme is a pair of colors which are on the opposite of each other on the color wheel.



5F3A3A



3A5F5F

Split Complementary

Split-complementary colors differ from the complementary color scheme. The scheme consists of three colors, the original color and two neighbors of the complement color.



184A59



5F3A3A



224B40

Square

The Square scheme is like the rectangle color scheme, but the four colors are evenly spaced on the color wheel.



5F3A3A



43462A



144B4E



41425D

Rectangle

The Rectangle color scheme consists of four colors that form a rectangle on the color wheel.



5F3A3A



54402A



144B4E



24485E

Sweetspot

The Sweet Spot groups the original color and five complimentary colors.



5F3A3A



7A6C6C



5F3A5F



3D3535



BDBDBD



3D3D3D

Same Dimension

The Same Dimension uses a secret algorithm to generate beautiful new colors.



5F3A3A



7A4141



5F4D3A



302C2C



700000



F00000

Inverse Universe

The Inverse Universe completely reimagines the original color for something new.



3A5F5F



417A7A



3A4D5F



2C3030



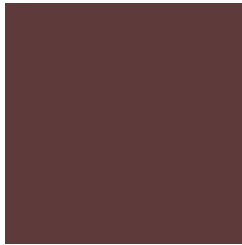
007070



00F0F0

Previews

White Background



This preview shows how the Hex color 5F3A3A looks on a white background.

Color Contrast Check

Large Text (above 18pt) WCAG AA ✓ Pass

Any Text WCAG AA ✓ Pass

Large Text (above 18pt) WCAG AAA ✓ Pass

Any Text WCAG AAA ✓ Pass

Black Background



Color Contrast Check

Large Text (above 18pt) WCAG AA × Fail

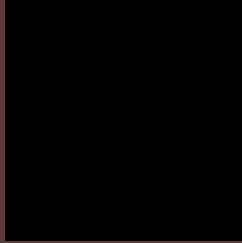
Any Text WCAG AA × Fail

Large Text (above 18pt) WCAG AAA × Fail

Any Text WCAG AAA × Fail

If you want to check with other color combinations, try the [Color Contrast Checker](#).

Hex 5F3A3A Background



This preview shows how black text looks on a background with the Hex color 5F3A3A.



This preview shows how white text looks on a background with the Hex color 5F3A3A.

Color Blindness Simulation

Color vision deficiency is a very complex topic, and I could not describe the different causes any better than Wikipedia does, so if you want to learn more, you should check out their [article about color blindness](#).

Dichromacy



Original Color
5F3A3A

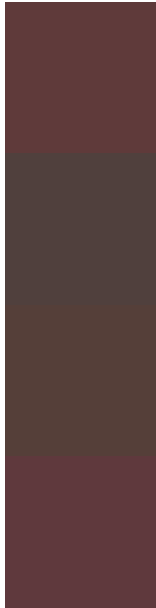
Protanopia
47443F

Deuteranopia
4F4239



Tritanopia
5F393E

Trichromacy



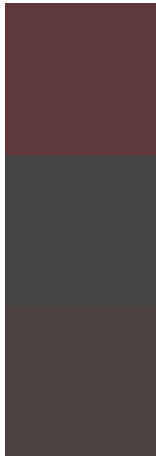
Original Color
5F3A3A

Protanomaly
50403D

Deuteranomaly
553F39

Tritanomaly
5F393D

Monochromacy



Original Color
5F3A3A

Achromatopsia
454545

Achromatomaly
4E4141

CSS Examples

Text

The CSS property to change the color of the text to Hex 5F3A3A is called "color". The color property can be set on classes, ids or directly on the HTML element.

This example shows how text in the color #5F3A3A looks like.

```
.text, #text, p{  
    color:#5F3A3A  
}
```

If you want to add a text shadow in that color use the text-shadow property, you can generate a text shadow directly with our [CSS Text Shadow Generator](#).

Here you see how black text with a 4 pixel #5F3A3A colored shadow looks like.

```
.shadow{ text-shadow: 4px 4px 2px #5F3A3A
}
```

Border

The CSS property to change the border of an element to Hex 5F3A3A is called "border". The border property can be set on classes, ids or directly on the HTML element.

This example shows the color as border, it can be applied via the CSS property "border" or "border-color".

```
.border, #border, table{ border:4px solid
#5F3A3A }
```

If only the border color should be changed use the property `border-color`.

```
.border{ border-color:#5F3A3A }
```

If you want to add a box shadow in that color use:

Here you see how a box with a 4 pixel #5F3A3A colored shadow looks like.

```
.boxshadow{ -moz-box-shadow:4px 4px 4px  
4px #5F3A3A; -webkit-box-shadow:4px 4px  
4px 4px #5F3A3A; box-shadow:4px 4px 4px  
4px #5F3A3A }
```

Background

The CSS property to change the background color of an element to Hex 5F3A3A is called "background". The background property can be set on classes, ids or directly on the HTML element.

```
.background, #background, body{  
background:#5F3A3A }
```

If only the background color should be changed can be used:

```
.background{ background-color:#5F3A3A }
```

This example shows the color as background, it is applied via the CSS property "background".

To optimize and compress your CSS code, you can use our [online CSS compressor and optimizer](#) based on csstidy. If you want to create a linear or radial gradient as background or border, check our [CSS Gradient Generator](#).

Hey! You found this booklet interesting? Support Converting Colors with the new Membership Option!

The pro membership hides all ads, plus gives you double the colors in the color bucket, and more awesome pro features!

[Learn more, Memberships starting at \\$2.50/m!](#)

**Follow me
on Twitter!**

@ConvertingColor