

# Converting Colors

Hex(5F424F)

Have a look what the booklet for  
Hex(5F424F) contains.

<b>Hex(5F424F)</b> .....	3
<b><i>Conversions</i></b> .....	4
<b><i>Details</i></b> .....	6
<b><i>Harmonies</i></b> .....	11
<b><i>Previews</i></b> .....	23
<b><i>Color Blindness Simulation</i></b> .....	26
<b><i>CSS Examples</i></b> .....	29

# Color

Hex(5F424F)

# Conversions

## Conversions Part 1

<b>Format</b>	<b>Color</b>
Hex	5F424F
RGB	95, 66, 79
RGB Percent	37%, 26%, 31%
CMY	0.6275, 0.7412, 0.6902
CMYK	0.00, 0.31, 0.17, 0.63
HSL	333°, 18%, 32%
HSV	333°, 31%, 37%
XYZ	8.0788, 6.8938, 8.3020
YIQ	76.1530, 13.1110, 10.1910

# Conversions

## Conversions Part 2

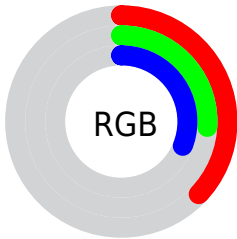
<b>Format</b>	<b>Color</b>
<b>R<sub>YB</sub></b>	95, 66, 79
Decimal	6242895
CIE Lab	31.56, 14.82, -2.80
CIE LCh	32, 15.085, 349.298
Yxy	6.8938, 0.3471, 0.2962
Android (android.graphics.Color)	4284432975 (0xFF5F424F)
YUV	76.1530, 1.4036, 16.5288
Hunter-Lab	26.2561, 8.9749, -0.3677

# Details

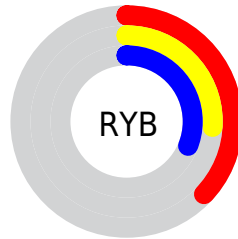
The Hex color **5F424F** is a dark color, and the websafe version is hex **663333**. A complement of this color would be **425F52**, and the grayscale version is **4C4C4C**.

A 20% lighter version of the original color is **927280**, and **301723** is the 20% darker color. If you saturate the color by 10%, you get **5F394A**, and if you desaturate by 10%, it is **5F4C54**.

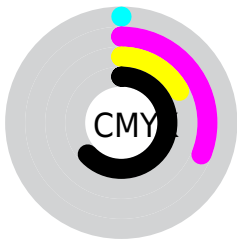
# Distribution



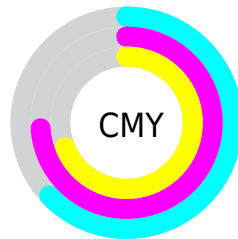
- Red (37%)
- Green (26%)
- Blue (31%)



- Red (37%)
- Yellow (26%)
- Blue (31%)



- Cyan (0%)
- Magenta (31%)
- Yellow (17%)
- Black (63%)



- Cyan (63%)
- Magenta (74%)
- Yellow (69%)

# Brightness & Saturation Gradients

These gradients show how the Hex color 5F424F changes by changing the brightness by 10 percent. The first figure shows a shift by +10% for each color and the second figure -10%.

Similar to the brightness gradients but the following saturation gradients show a change of the Hex color 5F424F by changing the saturation by 10% instead.



■ 5F424F

■ 5F424F

FFFFFF

■ 472C38

■ 927280

■ 301723

■ AD8C9A

■ 1D000D

■ C8A6B5

■ 000000

■ E4C2D0

■ FFDDDD

■ FFFAFF

■ 5F424F

■ 5F424F

■ 5F394A

■ 5F4C54

 5F2F45

 5F5559

 5F263F

 5F5F5F

 5F1C3A

 5F6864

 5F1335

 5F7269

 5F0930

 5F7B6E

 5F002B

 5F8574

 5F8E79

 5F987E

# Harmonies

## Analogous

The Analogous color harmony consists of three colors that are next to each other on the color wheel.



55455A



5F424F



624243

# Triad

The Triadic color harmony groups three colors that are evenly spaced from another and form a triangle on the color wheel.



5F424F



4B4C34



294F5C

# Complementary

The Complementary color scheme is a pair of colors which are on the opposite of each other on the color wheel.



5F424F



425F52

# Split Complementary

Split-complementary colors differ from the complementary color scheme. The scheme consists of three colors, the original color and two neighbors of the complement color.



275152



5F424F



3D4F3B

# Square

The Square scheme is like the rectangle color scheme, but the four colors are evenly spaced on the color wheel.



5F424F



574833



305145



354D61

# Rectangle

The Rectangle color scheme consists of four colors that form a rectangle on the color wheel.



5F424F



61433C



305145



275059



# Sweetspot

The Sweet Spot groups the original color and five complimentary colors.



5F424F



7A6F74



52425F



3D3639



BDBDBD



3D3D3D



# Same Dimension

The Same Dimension uses a secret algorithm to generate beautiful new colors.



5F424F



7A4D61



5F4342



302C2E



700032



F0006B



# Inverse Universe

The Inverse Universe completely reimagines the original color for something new.



5F424F



7A4D61



425E5F



302C2E



700032

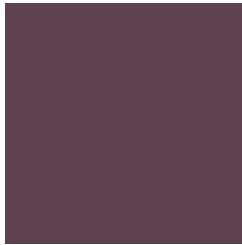


F0006B



# Previews

## White Background



This preview shows how the Hex color 5F424F looks on a white background.

## Color Contrast Check

Large Text (above 18pt) WCAG AA ✓ Pass

Any Text WCAG AA ✓ Pass

Large Text (above 18pt) WCAG AAA ✓ Pass

Any Text WCAG AAA ✓ Pass

# Black Background



## Color Contrast Check

Large Text (above 18pt) WCAG AA × Fail

Any Text WCAG AA × Fail

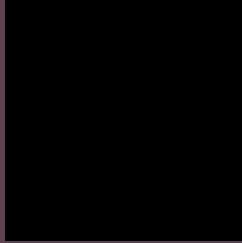
Large Text (above 18pt) WCAG AAA × Fail

Any Text WCAG AAA × Fail

If you want to check with other color combinations, try the [Color Contrast Checker](#).



## Hex 5F424F Background



This preview shows how black text looks on a background with the Hex color 5F424F.



This preview shows how white text looks on a background with the Hex color 5F424F.

# Color Blindness Simulation

Color vision deficiency is a very complex topic, and I could not describe the different causes any better than Wikipedia does, so if you want to learn more, you should check out their [article about color blindness](#).


## Dichromacy



**Original Color**  
5F424F

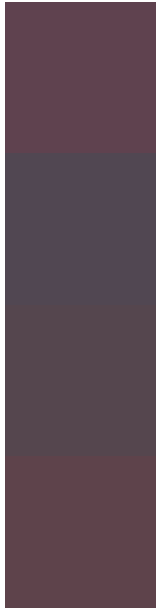
**Protanopia**  
494A54

**Deuteranopia**  
50484E



**Tritanopia**  
5E4348

# Trichromacy



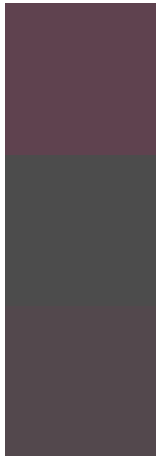
**Original Color**  
5F424F

**Protanomaly**  
514752

**Deuteranomaly**  
55464E

**Tritanomaly**  
5E434B

# Monochromacy



**Original Color**  
5F424F

**Achromatopsia**  
4C4C4C

**Achromatomaly**  
53484D

# CSS Examples

## Text

The CSS property to change the color of the text to Hex 5F424F is called "color". The color property can be set on classes, ids or directly on the HTML element.

This example shows how text in the color #5F424F looks like.

```
.text, #text, p{  
    color:#5F424F  
}
```

If you want to add a text shadow in that color use the text-shadow property, you can generate a text shadow directly with our [CSS Text Shadow Generator](#).

Here you see how black text with a 4 pixel #5F424F colored shadow looks like.

```
.shadow{ text-shadow: 4px 4px 2px #5F424F
}
```

## Border

The CSS property to change the border of an element to Hex 5F424F is called "border". The border property can be set on classes, ids or directly on the HTML element.

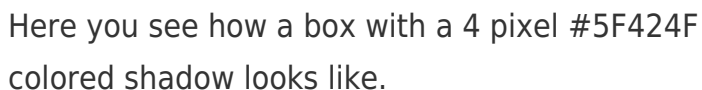
This example shows the color as border, it can be applied via the CSS property "border" or "border-color".

```
.border, #border, table{ border:4px solid
#5F424F }
```

If only the border color should be changed use the property `border-color`.

```
.border{ border-color:#5F424F }
```

If you want to add a box shadow in that color use:



Here you see how a box with a 4 pixel #5F424F colored shadow looks like.

```
.boxshadow{ -moz-box-shadow:4px 4px 4px  
4px #5F424F; -webkit-box-shadow:4px 4px  
4px 4px #5F424F; box-shadow:4px 4px 4px  
4px #5F424F }
```

# Background

The CSS property to change the background color of an element to Hex 5F424F is called "background". The background property can be set on classes, ids or directly on the HTML element.

```
.background, #background, body{  
background:#5F424F }
```

If only the background color should be changed can be used:

```
.background{ background-color:#5F424F }
```

This example shows the color as background, it is applied via the CSS property "background".

To optimize and compress your CSS code, you can use our [online CSS compressor and optimizer](#) based on csstidy. If you want to create a linear or radial gradient as background or border, check our [CSS Gradient Generator](#).



Hey! You found this booklet interesting? Support Converting Colors with the new Membership Option!

The pro membership hides all ads, plus gives you double the colors in the color bucket, and more awesome pro features!

**[Learn more, Memberships starting at \\$2.50/m!](#)**

**Follow me  
on Twitter!**

@ConvertingColor