

Converting Colors

Hex(5F4347)

Have a look what the booklet for
Hex(5F4347) contains.

Hex(5F4347)	3
<i>Conversions</i>	4
<i>Details</i>	6
<i>Harmonies</i>	11
<i>Previews</i>	23
<i>Color Blindness Simulation</i>	26
<i>CSS Examples</i>	29

Color

Hex(5F4347)

Conversions

Conversions Part 1

Format	Color
Hex	5F4347
RGB	95, 67, 71
RGB Percent	37%, 26%, 28%
CMY	0.6275, 0.7373, 0.7216
CMYK	0.00, 0.29, 0.25, 0.63
HSL	351°, 17%, 32%
HSV	351°, 29%, 37%
XYZ	7.8638, 6.9021, 6.8790
YIQ	75.8280, 15.4040, 7.1800

Conversions

Conversions Part 2

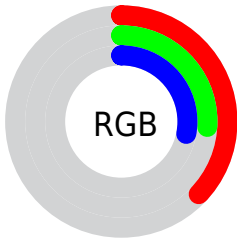
Format	Color
R_{YB}	95, 67, 71
Decimal	6243143
CIE Lab	31.58, 12.77, 2.38
CIE LCh	32, 12.993, 10.572
Yxy	6.9021, 0.3633, 0.3189
Android (android.graphics.Color)	4284433223 (0xFF5F4347)
YUV	75.8280, -2.3802, 16.8138
Hunter-Lab	26.2719, 7.4534, 2.8659

Details

The Hex color **5F4347** is a dark color, and the websafe version is hex **663333**. A complement of this color would be **435F5B**, and the grayscale version is **4C4C4C**.

A 20% lighter version of the original color is **927377**, and **30181C** is the 20% darker color. If you saturate the color by 10%, you get **5F3A3F**, and if you desaturate by 10%, it is **5F4D4F**.

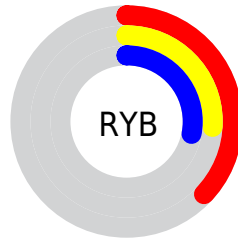
Distribution



Red (37%)

Green (26%)

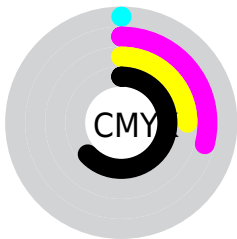
Blue (28%)



Red (37%)

Yellow (26%)

Blue (28%)

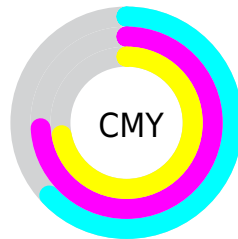


Cyan (0%)

Magenta (29%)

Yellow (25%)

Black (63%)



Cyan (63%)

Magenta (74%)

Yellow (72%)

Brightness & Saturation Gradients

These gradients show how the Hex color 5F4347 changes by changing the brightness by 10 percent. The first figure shows a shift by +10% for each color and the second figure -10%.

Similar to the brightness gradients but the following saturation gradients show a change of the Hex color 5F4347 by changing the saturation by 10% instead.

■ 5F4347

■ 5F4347

FFFFFF

■ 472D31

■ 927377

■ 30181C

■ AD8D91

■ 1E0001

■ C8A7AB

■ 000000

■ E5C3C7

■ FFDEE3

■ FFFBFF

■ 5F4347

■ 5F4347

■ 5F3A3F

■ 5F4D4F

■ 5F3037

■ 5F5657

■ 5F272F

■ 5F605F

■ 5F1D26

■ 5F6968

■ 5F131E

■ 5F7370

■ 5F0A16

■ 5F7C78

■ 5F010E

■ 5F8680

■ 5F000E

■ 5F8F88

■ 5F9990

Harmonies

Analogous

The Analogous color harmony consists of three colors that are next to each other on the color wheel.



5A4451



5F4347



5E443E

Triad

The Triadic color harmony groups three colors that are evenly spaced from another and form a triangle on the color wheel.



5F4347



434E3B



364D5D

Complementary

The Complementary color scheme is a pair of colors which are on the opposite of each other on the color wheel.



5F4347



435F5B

Split Complementary

Split-complementary colors differ from the complementary color scheme. The scheme consists of three colors, the original color and two neighbors of the complement color.



2E4F57



5F4347



375043

Square

The Square scheme is like the rectangle color scheme, but the four colors are evenly spaced on the color wheel.



5F4347



4E4B36



2F504E



434A5E

Rectangle

The Rectangle color scheme consists of four colors that form a rectangle on the color wheel.



5F4347



5A4639



2F504E



324E5C

Sweetspot

The Sweet Spot groups the original color and five complimentary colors.



5F4347



7A6F71



5B435F



3D3637



BDBDBD



3D3D3D

Same Dimension

The Same Dimension uses a secret algorithm to generate beautiful new colors.



5F4347



7A5056



5F4D43



302C2C



700010



F00022

Inverse Universe

The Inverse Universe completely reimagines the original color for something new.



5F4347



7A5056



43555F



302C2C



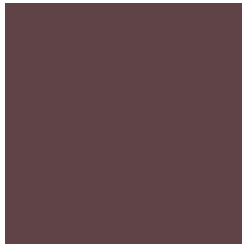
700010



F00022

Previews

White Background



This preview shows how the Hex color 5F4347 looks on a white background.

Color Contrast Check

Large Text (above 18pt) WCAG AA ✓ Pass

Any Text WCAG AA ✓ Pass

Large Text (above 18pt) WCAG AAA ✓ Pass

Any Text WCAG AAA ✓ Pass

Black Background



Color Contrast Check

Large Text (above 18pt) WCAG AA × Fail

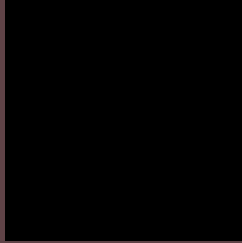
Any Text WCAG AA × Fail

Large Text (above 18pt) WCAG AAA × Fail

Any Text WCAG AAA × Fail

If you want to check with other color combinations, try the [Color Contrast Checker](#).

Hex 5F4347 Background



This preview shows how black text looks on a background with the Hex color 5F4347.

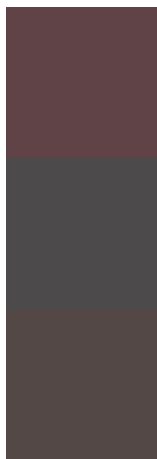


This preview shows how white text looks on a background with the Hex color 5F4347.

Color Blindness Simulation

Color vision deficiency is a very complex topic, and I could not describe the different causes any better than Wikipedia does, so if you want to learn more, you should check out their [article about color blindness](#).


Dichromacy



Original Color
5F4347

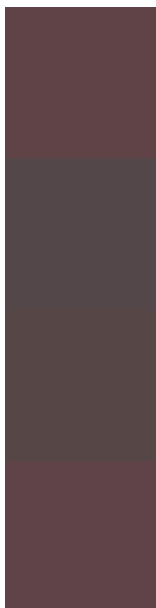
Protanopia
4C4A4B

Deuteranopia
534846



Tritanopia
5F4348

Trichromacy



Original Color

5F4347

Protanomaly

53474A

Deuteranomaly

574646

Tritanomaly

5F4348

Monochromacy



Original Color

5F4347

Achromatopsia

4C4C4C

Achromatomaly

53494A

CSS Examples

Text

The CSS property to change the color of the text to Hex 5F4347 is called "color". The color property can be set on classes, ids or directly on the HTML element.

This example shows how text in the color #5F4347 looks like.

```
.text, #text, p{  
    color:#5F4347  
}
```

If you want to add a text shadow in that color use the text-shadow property, you can generate a text shadow directly with our [CSS Text Shadow Generator](#).

Here you see how black text with a 4 pixel #5F4347 colored shadow looks like.

```
.shadow{ text-shadow: 4px 4px 2px #5F4347
}
```

Border

The CSS property to change the border of an element to Hex 5F4347 is called "border". The border property can be set on classes, ids or directly on the HTML element.

This example shows the color as border, it can be applied via the CSS property "border" or "border-color".

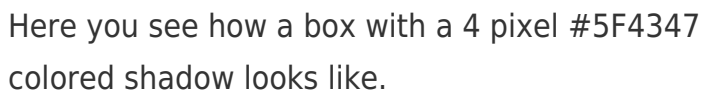
```
.border, #border, table{ border:4px solid
#5F4347 }
```

If only the border color should be changed use the property `border-color`.

```
.border{ border-color:#5F4347 }
```

If you want to add a box shadow in that color use:

Here you see how a box with a 4 pixel #5F4347 colored shadow looks like.



```
.boxshadow{ -moz-box-shadow:4px 4px 4px  
4px #5F4347; -webkit-box-shadow:4px 4px  
4px 4px #5F4347; box-shadow:4px 4px 4px  
4px #5F4347 }
```

Background

The CSS property to change the background color of an element to Hex 5F4347 is called "background". The background property can be set on classes, ids or directly on the HTML element.

```
.background, #background, body{  
background:#5F4347 }
```

If only the background color should be changed can be used:

```
.background{ background-color:#5F4347 }
```

This example shows the color as background, it is applied via the CSS property "background".

To optimize and compress your CSS code, you can use our [online CSS compressor and optimizer](#) based on csstidy. If you want to create a linear or radial gradient as background or border, check our [CSS Gradient Generator](#).

Hey! You found this booklet interesting? Support Converting Colors with the new Membership Option!

The pro membership hides all ads, plus gives you double the colors in the color bucket, and more awesome pro features!

[Learn more, Memberships starting at \\$2.50/m!](#)

**Follow me
on Twitter!**

@ConvertingColor