

Converting Colors

Hex(5F434C)

Have a look what the booklet for
Hex(5F434C) contains.

Hex(5F434C)	3
<i>Conversions</i>	4
<i>Details</i>	6
<i>Harmonies</i>	11
<i>Previews</i>	23
<i>Color Blindness Simulation</i>	26
<i>CSS Examples</i>	29

Color

Hex(5F434C)

Conversions

Conversions Part 1

Format	Color
Hex	5F434C
RGB	95, 67, 76
RGB Percent	37%, 26%, 30%
CMY	0.6275, 0.7373, 0.7020
CMYK	0.00, 0.29, 0.20, 0.63
HSL	341°, 17%, 32%
HSV	341°, 29%, 37%
XYZ	8.0310, 6.9690, 7.7594
YIQ	76.3980, 13.7990, 8.7350

Conversions

Conversions Part 2

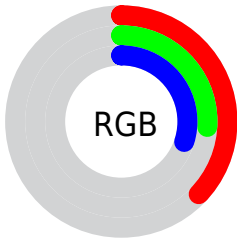
Format	Color
RYB	95, 67, 76
Decimal	6243148
CIELab	31.74, 13.65, -0.61
CIELCh	32, 13.659, 357.421
Yxy	6.9690, 0.3529, 0.3062
Android (android.graphics.Color)	4284433228 (0xFF5F434C)
YUV	76.3980, -0.1962, 16.3140
Hunter-Lab	26.3989, 8.1046, 1.0523

Details

The Hex color **5F434C** is a dark color, and the websafe version is hex **663333**. A complement of this color would be **435F56**, and the grayscale version is **4C4C4C**.

A 20% lighter version of the original color is **92737D**, and **301820** is the 20% darker color. If you saturate the color by 10%, you get **5F3A46**, and if you desaturate by 10%, it is **5F4D52**.

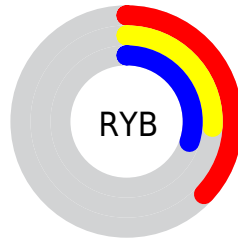
Distribution



 Red (37%)

 Green (26%)

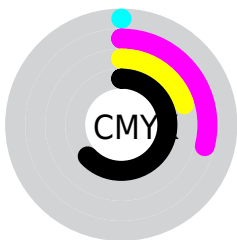
 Blue (30%)



 Red (37%)

 Yellow (26%)

 Blue (30%)

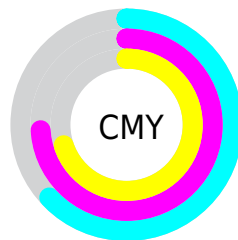


 Cyan (0%)

 Magenta (29%)

 Yellow (20%)

 Black (63%)



 Cyan (63%)

 Magenta (74%)

 Yellow (70%)

Brightness & Saturation Gradients

These gradients show how the Hex color 5F434C changes by changing the brightness by 10 percent. The first figure shows a shift by +10% for each color and the second figure -10%.

Similar to the brightness gradients but the following saturation gradients show a change of the Hex color 5F434C by changing the saturation by 10% instead.

■ 5F434C

■ 5F434C

FFFFFF

■ 472D35

■ 92737D

■ 301820

■ AD8D97

■ 1D0008

■ C8A7B1

■ 000000

■ E4C3CD

■ FFDFE9

■ FFFBFF

■ 5F434C

■ 5F434C

■ 5F3A46

■ 5F4D52

 5F303F

 5F5659

 5F2739

 5F605F

 5F1D32

 5F6966

 5F132C

 5F736C

 5F0A25

 5F7C73

 5F011F

 5F8679

 5F001F

 5F8F80

 5F9986

Harmonies

Analogous

The Analogous color harmony consists of three colors that are next to each other on the color wheel.



584556



5F434C



604441

Triad

The Triadic color harmony groups three colors that are evenly spaced from another and form a triangle on the color wheel.



5F434C



484D37



304F5C

Complementary

The Complementary color scheme is a pair of colors which are on the opposite of each other on the color wheel.



5F434C



435F56

Split Complementary

Split-complementary colors differ from the complementary color scheme. The scheme consists of three colors, the original color and two neighbors of the complement color.



2B5054



5F434C



3C4F3F

Square

The Square scheme is like the rectangle color scheme, but the four colors are evenly spaced on the color wheel.



5F434C



534A35



315149



3C4C60

Rectangle

The Rectangle color scheme consists of four colors that form a rectangle on the color wheel.



5F434C



5E453B



315149



2D505A

Sweetspot

The Sweet Spot groups the original color and five complimentary colors.



5F434C



7A6F73



56435F



3D3639



BDBDBD



3D3D3D

Same Dimension

The Same Dimension uses a secret algorithm to generate beautiful new colors.



5F434C



7A505D



5F4843



302C2D



700024



F0004D

Inverse Universe

The Inverse Universe completely reimagines the original color for something new.



5F434C



7A505D



435A5F



302C2D



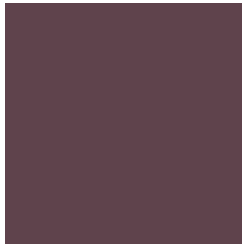
700024



F0004D

Previews

White Background



This preview shows how the Hex color 5F434C looks on a white background.

Color Contrast Check

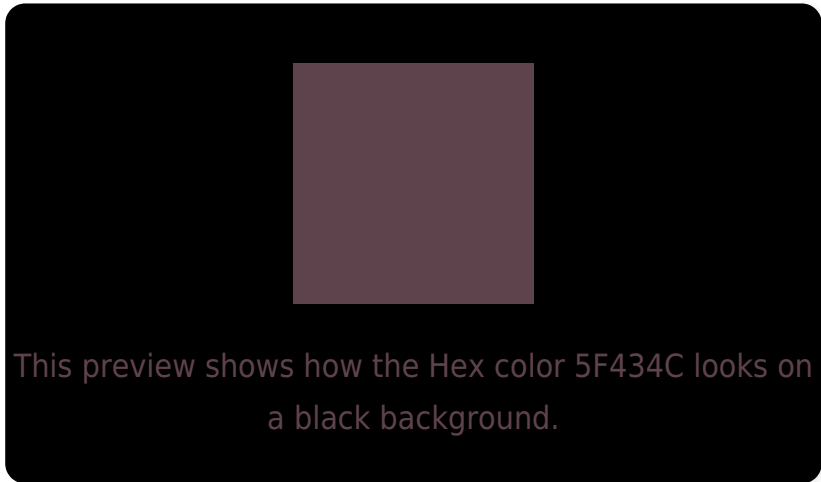
Large Text (above 18pt) WCAG AA ✓ Pass

Any Text WCAG AA ✓ Pass

Large Text (above 18pt) WCAG AAA ✓ Pass

Any Text WCAG AAA ✓ Pass

Black Background



Color Contrast Check

Large Text (above 18pt) WCAG AA × Fail

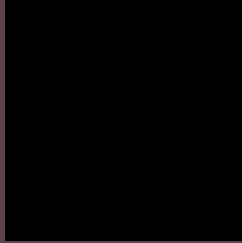
Any Text WCAG AA × Fail

Large Text (above 18pt) WCAG AAA × Fail

Any Text WCAG AAA × Fail

If you want to check with other color combinations, try the [Color Contrast Checker](#).

Hex 5F434C Background



This preview shows how black text looks on a background with the Hex color 5F434C.



This preview shows how white text looks on a background with the Hex color 5F434C.

Color Blindness Simulation

Color vision deficiency is a very complex topic, and I could not describe the different causes any better than Wikipedia does, so if you want to learn more, you should check out their [article about color blindness](#).

Dichromacy



Original Color
5F434C

Protanopia
4B4A50

Deuteranopia
52494B



Tritanopia
5F4449

Trichromacy



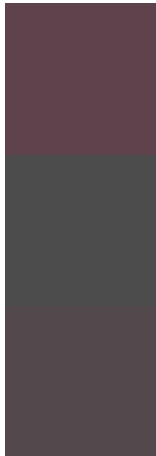
Original Color
5F434C

Protanomaly
52474F

Deuteranomaly
57474B

Tritanomaly
5F444A

Monochromacy



Original Color
5F434C

Achromatopsia
4C4C4C

Achromatomaly
53494C

CSS Examples

Text

The CSS property to change the color of the text to Hex 5F434C is called "color". The color property can be set on classes, ids or directly on the HTML element.

This example shows how text in the color #5F434C looks like.

```
.text, #text, p{  
    color:#5F434C  
}
```

If you want to add a text shadow in that color use the text-shadow property, you can generate a text shadow directly with our [CSS Text Shadow Generator](#).

Here you see how black text with a 4 pixel #5F434C colored shadow looks like.

```
.shadow{ text-shadow: 4px 4px 2px #5F434C
}
```

Border

The CSS property to change the border of an element to Hex 5F434C is called "border". The border property can be set on classes, ids or directly on the HTML element.

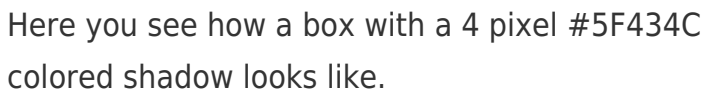
This example shows the color as border, it can be applied via the CSS property "border" or "border-color".

```
.border, #border, table{ border:4px solid
#5F434C }
```

If only the border color should be changed use the property `border-color`.

```
.border{ border-color:#5F434C }
```

If you want to add a box shadow in that color use:



Here you see how a box with a 4 pixel #5F434C colored shadow looks like.

```
.boxshadow{ -moz-box-shadow:4px 4px 4px  
4px #5F434C; -webkit-box-shadow:4px 4px  
4px 4px #5F434C; box-shadow:4px 4px 4px  
4px #5F434C }
```

Background

The CSS property to change the background color of an element to Hex 5F434C is called "background". The background property can be set on classes, ids or directly on the HTML element.

```
.background, #background, body{  
background:#5F434C }
```

If only the background color should be changed can be used:

```
.background{ background-color:#5F434C }
```

This example shows the color as background, it is applied via the CSS property "background".

To optimize and compress your CSS code, you can use our [online CSS compressor and optimizer](#) based on csstidy. If you want to create a linear or radial gradient as background or border, check our [CSS Gradient Generator](#).

Hey! You found this booklet interesting? Support Converting Colors with the new Membership Option!

The pro membership hides all ads, plus gives you double the colors in the color bucket, and more awesome pro features!

[Learn more, Memberships starting at \\$2.50/m!](#)

**Follow me
on Twitter!**

@ConvertingColor