

# Converting Colors

Hex(602C71)

Have a look what the booklet for  
Hex(602C71) contains.

<b>Hex(602C71)</b> .....	3
<b><i>Conversions</i></b> .....	4
<b><i>Details</i></b> .....	6
<b><i>Harmonies</i></b> .....	11
<b><i>Previews</i></b> .....	23
<b><i>Color Blindness Simulation</i></b> .....	26
<b><i>CSS Examples</i></b> .....	29

# Color

**Hex(602C71)**

# Conversions

## Conversions Part 1

<b>Format</b>	<b>Color</b>
Hex	602C71
RGB	96, 44, 113
RGB Percent	38%, 17%, 44%
CMY	0.6235, 0.8275, 0.5569
CMYK	0.15, 0.61, 0.00, 0.56
HSL	285°, 44%, 31%
HSV	285°, 61%, 44%
XYZ	8.7052, 5.4804, 16.2218
YIQ	67.4140, 8.8430, 32.4830

# Conversions

## Conversions Part 2

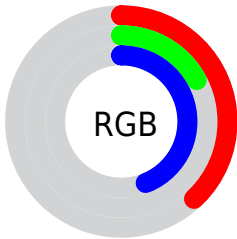
<b>Format</b>	<b>Color</b>
<b>R<sub>YB</sub></b>	96, 44, 113
Decimal	6302833
CIE <sub>Lab</sub>	28.06, 35.46, -30.06
CIE <sub>LCh</sub>	28, 46.484, 319.714
Yxy	5.4804, 0.2863, 0.1802
Android (android.graphics.Color)	4284492913 (0xFF602C71)
YUV	67.4140, 22.4739, 25.0699
Hunter-Lab	23.4103, 25.4078, -24.6969

# Details

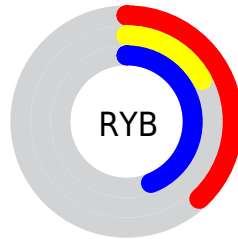
The Hex color **602C71** is a dark color, and the websafe version is hex **663366**. A complement of this color would be **3D712C**, and the grayscale version is **434343**.

A 20% lighter version of the original color is **945DA5**, and **2E0040** is the 20% darker color. If you saturate the color by 10%, you get **5D2171**, and if you desaturate by 10%, it is **633771**.

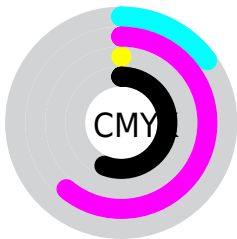
# Distribution



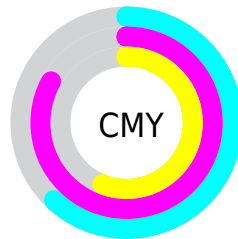
- Red (38%)
- Green (17%)
- Blue (44%)



- Red (38%)
- Yellow (17%)
- Blue (44%)



- Cyan (15%)
- Magenta (61%)
- Yellow (0%)
- Black (56%)



- Cyan (62%)
- Magenta (83%)
- Yellow (56%)

# Brightness & Saturation Gradients

These gradients show how the Hex color 602C71 changes by changing the brightness by 10 percent. The first figure shows a shift by +10% for each color and the second figure -10%.

Similar to the brightness gradients but the following saturation gradients show a change of the Hex color 602C71 by changing the saturation by 10% instead.



602C71

602C71

FFFFFF

471458

945DA5

2E0040

B076C1

1A002A

CC90DD

000114

E8ABF9

000000

FFC7FF

FFE3FF

602C71

602C71

5D2171

633771

■ 5A1571

■ 664371

■ 580A71

■ 684E71

■ 550071

■ 6B5971

■ 6E6571

■ 717071

■ 737B71

■ 768671

■ 799271

# Harmonies

## Analogous

The Analogous color harmony consists of three colors that are next to each other on the color wheel.



1F3E86



602C71



7B1950

# Triad

The Triadic color harmony groups three colors that are evenly spaced from another and form a triangle on the color wheel.



602C71



5C3C00



005259

# Complementary

The Complementary color scheme is a pair of colors which are on the opposite of each other on the color wheel.



602C71



3D712C

# Split Complementary

Split-complementary colors differ from the complementary color scheme. The scheme consists of three colors, the original color and two neighbors of the complement color.



005134



602C71



3C4800

# Square

The Square scheme is like the rectangle color scheme, but the four colors are evenly spaced on the color wheel.



602C71



742C09



004E0E



005079

# Rectangle

The Rectangle color scheme consists of four colors that form a rectangle on the color wheel.



602C71



801638



004E0E



00524D



# Sweetspot

The Sweet Spot groups the original color and five complimentary colors.



602C71



8D7994



2C3D71



463A4A



C9C9C9



4A4A4A



# Same Dimension

The Same Dimension uses a secret algorithm to generate beautiful new colors.



602C71



792894



712C60



373238



5A0078



BA00F7



# Inverse Universe

The Inverse Universe completely reimagines the original color for something new.



712C3D



942843



2C713D



383234



78001E



F7003D



# Previews

## White Background



This preview shows how the Hex color 602C71 looks on a white background.

## Color Contrast Check

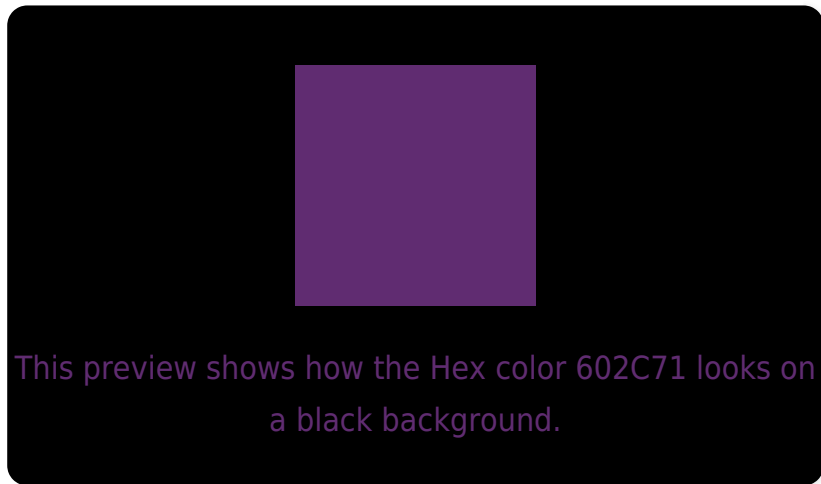
Large Text (above 18pt) WCAG AA ✓ Pass

Any Text WCAG AA ✓ Pass

Large Text (above 18pt) WCAG AAA ✓ Pass

Any Text WCAG AAA ✓ Pass

# Black Background



## Color Contrast Check

Large Text (above 18pt) WCAG AA × Fail

Any Text WCAG AA × Fail

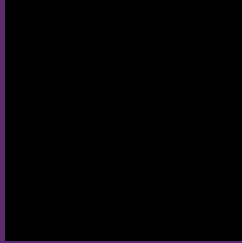
Large Text (above 18pt) WCAG AAA × Fail

Any Text WCAG AAA × Fail

If you want to check with other color combinations, try the [Color Contrast Checker](#).



## Hex 602C71 Background



This preview shows how black text looks on a background with the Hex color 602C71.

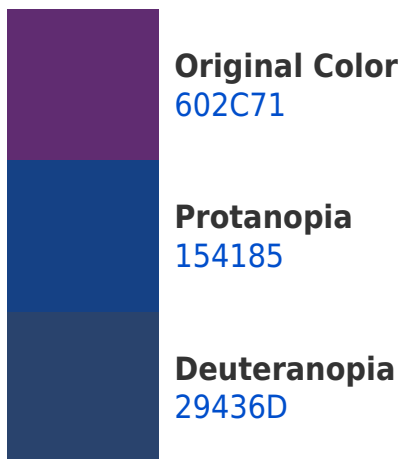


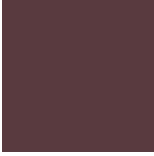
This preview shows how white text looks on a background with the Hex color 602C71.

# Color Blindness Simulation

Color vision deficiency is a very complex topic, and I could not describe the different causes any better than Wikipedia does, so if you want to learn more, you should check out their [article about color blindness](#).

## Dichromacy





**Tritanopia**  
593A3F

# Trichromacy



**Original Color**  
602C71

**Protanomaly**  
30397E

**Deuteranomaly**  
3D3B6E

**Tritanomaly**  
5C3551

# Monochromacy



**Original Color**  
602C71

**Achromatopsia**  
434343

**Achromatomaly**  
4E3B54

# CSS Examples

## Text

The CSS property to change the color of the text to Hex 602C71 is called "color". The color property can be set on classes, ids or directly on the HTML element.

This example shows how text in the color #602C71 looks like.

```
.text, #text, p{  
    color:#602C71  
}
```

If you want to add a text shadow in that color use the text-shadow property, you can generate a text shadow directly with our [CSS Text Shadow Generator](#).

Here you see how black text with a 4 pixel #602C71 colored shadow looks like.

```
.shadow{ text-shadow: 4px 4px 2px #602C71
}
```

## Border

The CSS property to change the border of an element to Hex 602C71 is called "border". The border property can be set on classes, ids or directly on the HTML element.

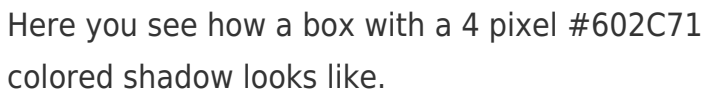
This example shows the color as border, it can be applied via the CSS property "border" or "border-color".

```
.border, #border, table{ border:4px solid
#602C71 }
```

If only the border color should be changed use the property `border-color`.

```
.border{ border-color:#602C71 }
```

If you want to add a box shadow in that color use:



Here you see how a box with a 4 pixel #602C71 colored shadow looks like.

```
.boxshadow{ -moz-box-shadow:4px 4px 4px  
4px #602C71; -webkit-box-shadow:4px 4px  
4px 4px #602C71; box-shadow:4px 4px 4px  
4px #602C71 }
```

# Background

The CSS property to change the background color of an element to Hex 602C71 is called "background". The background property can be set on classes, ids or directly on the HTML element.

```
.background, #background, body{  
background:#602C71 }
```

If only the background color should be changed can be used:

```
.background{ background-color:#602C71 }
```

This example shows the color as background, it is applied via the CSS property "background".

To optimize and compress your CSS code, you can use our [online CSS compressor and optimizer](#) based on csstidy. If you want to create a linear or radial gradient as background or border, check our [CSS Gradient Generator](#).



Hey! You found this booklet interesting? Support Converting Colors with the new Membership Option!

The pro membership hides all ads, plus gives you double the colors in the color bucket, and more awesome pro features!

**[Learn more, Memberships starting at \\$2.50/m!](#)**

**Follow me  
on Twitter!**

@ConvertingColor