

# Converting Colors

Hex(603637)

Have a look what the booklet for  
Hex(603637) contains.

<b>Hex(603637)</b> .....	3
<b><i>Conversions</i></b> .....	4
<b><i>Details</i></b> .....	6
<b><i>Harmonies</i></b> .....	11
<b><i>Previews</i></b> .....	23
<b><i>Color Blindness Simulation</i></b> .....	26
<b><i>CSS Examples</i></b> .....	29

# Color

**Hex(603637)**

# Conversions

## Conversions Part 1

Format	Color
Hex	603637
RGB	96, 54, 55
RGB Percent	38%, 21%, 22%
CMY	0.6235, 0.7882, 0.7843
CMYK	0.00, 0.44, 0.43, 0.62
HSL	359°, 28%, 29%
HSV	359°, 44%, 38%
XYZ	6.8326, 5.4010, 4.2968
YIQ	66.6720, 24.7110, 9.2150

# Conversions

## Conversions Part 2

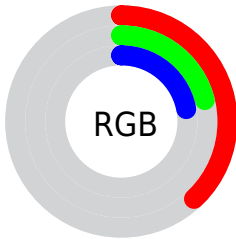
<b>Format</b>	<b>Color</b>
<b>R<sub>Y</sub>B</b>	96, 54, 55
Decimal	6305335
CIE Lab	27.85, 18.90, 7.51
CIE LCh	28, 20.337, 21.667
Yxy	5.4010, 0.4133, 0.3267
Android (android.graphics.Color)	4284495415 (0xFF603637)
YUV	66.6720, -5.7543, 25.7207
Hunter-Lab	23.2400, 11.8096, 5.3060

# Details

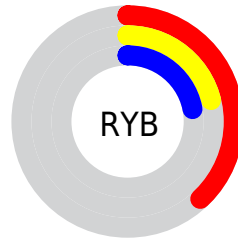
The Hex color **603637** is a dark color, and the websafe version is hex **663333**. A complement of this color would be **36605F**, and the grayscale version is **434343**.

A 20% lighter version of the original color is **946566**, and **2F0B0B** is the 20% darker color. If you saturate the color by 10%, you get **602C2E**, and if you desaturate by 10%, it is **604040**.

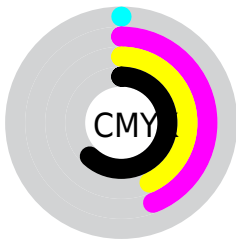
# Distribution



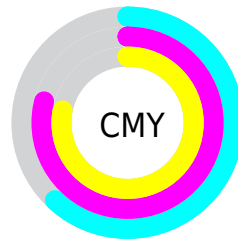
- Red (38%)
- Green (21%)
- Blue (22%)



- Red (38%)
- Yellow (21%)
- Blue (22%)



- Cyan (0%)
- Magenta (44%)
- Yellow (43%)
- Black (62%)



- Cyan (62%)
- Magenta (79%)
- Yellow (78%)

# Brightness & Saturation Gradients

These gradients show how the Hex color 603637 changes by changing the brightness by 10 percent. The first figure shows a shift by +10% for each color and the second figure -10%.

Similar to the brightness gradients but the following saturation gradients show a change of the Hex color 603637 by changing the saturation by 10% instead.





603637



603637

FFFFFF



472022



946566



2F0B0B



B07F7F



150000



CB9999



000000



E8B4B3



FFCFCF



FFECEB



603637



603637



602C2E



604040

602324

60494A

60191B

605353

601012

605C5C

600608

606666

600002

60706F

607979

608382

608C8B

# Harmonies

## Analogous

The Analogous color harmony consists of three colors that are next to each other on the color wheel.



5D3647



603637



5B3A2A

# Triad

The Triadic color harmony groups three colors that are evenly spaced from another and form a triangle on the color wheel.



603637



2E482E



224560

# Complementary

The Complementary color scheme is a pair of colors which are on the opposite of each other on the color wheel.



603637



36605F

# Split Complementary

Split-complementary colors differ from the complementary color scheme. The scheme consists of three colors, the original color and two neighbors of the complement color.



00485A



603637



194A3D

# Square

The Square scheme is like the rectangle color scheme, but the four colors are evenly spaced on the color wheel.



603637



404424



004A4D



3D3F5F

# Rectangle

The Rectangle color scheme consists of four colors that form a rectangle on the color wheel.



603637



543D24



004A4D



18465F



# Sweetspot

The Sweet Spot groups the original color and five complimentary colors.



603637



7D6D6D



5F3660



403636



BFBFBF



404040



# Same Dimension

The Same Dimension uses a secret algorithm to generate beautiful new colors.



603637



7D3B3C



604A36



302C2C



700003



F00006



# Inverse Universe

The Inverse Universe completely reimagines the original color for something new.



603637



7D3B3C



364C60



302C2C



700003

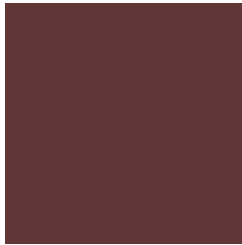


F00006



# Previews

## White Background



This preview shows how the Hex color 603637 looks on a white background.

## Color Contrast Check

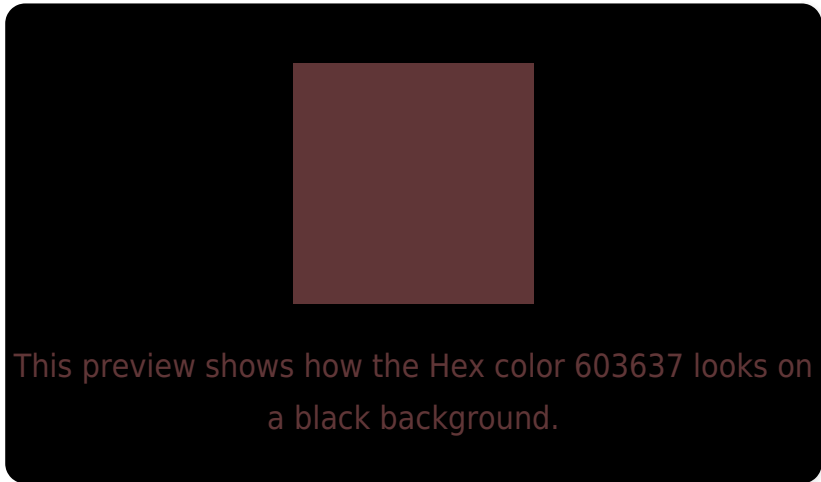
Large Text (above 18pt) WCAG AA ✓ Pass

Any Text WCAG AA ✓ Pass

Large Text (above 18pt) WCAG AAA ✓ Pass

Any Text WCAG AAA ✓ Pass

# Black Background



## Color Contrast Check

Large Text (above 18pt) WCAG AA × Fail

Any Text WCAG AA × Fail

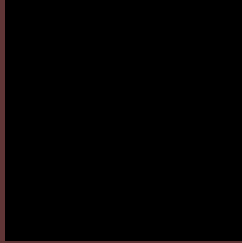
Large Text (above 18pt) WCAG AAA × Fail

Any Text WCAG AAA × Fail

If you want to check with other color combinations, try the [Color Contrast Checker](#).



## Hex 603637 Background



This preview shows how black text looks on a background with the Hex color 603637.



This preview shows how white text looks on a background with the Hex color 603637.

# Color Blindness Simulation

Color vision deficiency is a very complex topic, and I could not describe the different causes any better than Wikipedia does, so if you want to learn more, you should check out their [article about color blindness](#).


## Dichromacy



**Original Color**  
603637

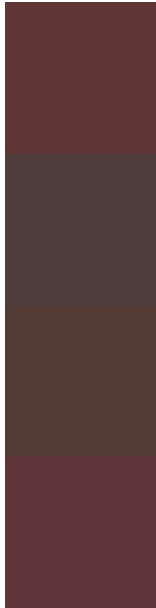
**Protanopia**  
45423D

**Deuteranopia**  
4D4035



**Tritanopia**  
60363A

# Trichromacy



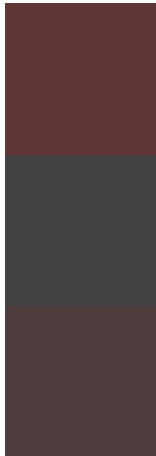
**Original Color**  
603637

**Protanomaly**  
4F3E3B

**Deuteranomaly**  
543C36

**Tritanomaly**  
603639

# Monochromacy



**Original Color**  
603637

**Achromatopsia**  
434343

**Achromatomaly**  
4E3E3F

# CSS Examples

## Text

The CSS property to change the color of the text to Hex 603637 is called "color". The color property can be set on classes, ids or directly on the HTML element.

This example shows how text in the color #603637 looks like.

```
.text, #text, p{  
    color:#603637  
}
```

If you want to add a text shadow in that color use the text-shadow property, you can generate a text shadow directly with our [CSS Text Shadow Generator](#).

Here you see how black text with a 4 pixel #603637 colored shadow looks like.

```
.shadow{ text-shadow: 4px 4px 2px #603637
}
```

## Border

The CSS property to change the border of an element to Hex 603637 is called "border". The border property can be set on classes, ids or directly on the HTML element.

This example shows the color as border, it can be applied via the CSS property "border" or "border-color".

```
.border, #border, table{ border:4px solid
#603637 }
```

If only the border color should be changed use the property `border-color`.

```
.border{ border-color:#603637 }
```

If you want to add a box shadow in that color use:

Here you see how a box with a 4 pixel #603637 colored shadow looks like.

```
.boxshadow{ -moz-box-shadow:4px 4px 4px  
4px #603637; -webkit-box-shadow:4px 4px  
4px 4px #603637; box-shadow:4px 4px 4px  
4px #603637 }
```

# Background

The CSS property to change the background color of an element to Hex 603637 is called "background". The background property can be set on classes, ids or directly on the HTML element.

```
.background, #background, body{  
background:#603637 }
```

If only the background color should be changed can be used:

```
.background{ background-color:#603637 }
```

This example shows the color as background, it is applied via the CSS property "background".

To optimize and compress your CSS code, you can use our [online CSS compressor and optimizer](#) based on csstidy. If you want to create a linear or radial gradient as background or border, check our [CSS Gradient Generator](#).



Hey! You found this booklet interesting? Support Converting Colors with the new Membership Option!

The pro membership hides all ads, plus gives you double the colors in the color bucket, and more awesome pro features!

**[Learn more, Memberships starting at \\$2.50/m!](#)**

**Follow me  
on Twitter!**

@ConvertingColor