

Converting Colors

Hex(612787)

Have a look what the booklet for
Hex(612787) contains.

Hex(612787)	3
<i>Conversions</i>	4
<i>Details</i>	6
<i>Harmonies</i>	11
<i>Previews</i>	23
<i>Color Blindness Simulation</i>	26
<i>CSS Examples</i>	29

Color

Hex(612787)

Conversions

Conversions Part 1

Format	Color
Hex	612787
RGB	97, 39, 135
RGB Percent	38%, 15%, 53%
CMY	0.6196, 0.8471, 0.4706
CMYK	0.28, 0.71, 0.00, 0.47
HSL	276°, 55%, 34%
HSV	276°, 71%, 53%
XYZ	10.0285, 5.7417, 23.5014
YIQ	67.2860, 3.7520, 42.1520

Conversions

Conversions Part 2

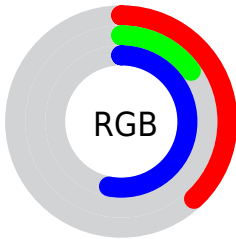
Format	Color
R_{YB}	97, 39, 135
Decimal	6367111
CIE _{Lab}	28.75, 43.37, -42.81
CIE _{LCh}	29, 60.944, 315.372
Yxy	5.7417, 0.2554, 0.1462
Android (android.graphics.Color)	4284557191 (0xFF612787)
YUV	67.2860, 33.3830, 26.0592
Hunter-Lab	23.9618, 32.7722, -41.3774

Details

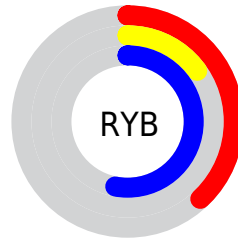
The Hex color **612787** is a dark color, and the websafe version is hex **663399**. A complement of this color would be **4D8727**, and the grayscale version is **434343**.

A 20% lighter version of the original color is **9759BD**, and **2D0054** is the 20% darker color. If you saturate the color by 10%, you get **5C1A87**, and if you desaturate by 10%, it is **663587**.

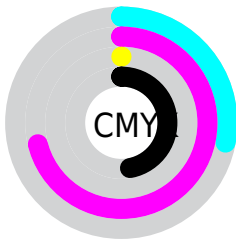
Distribution



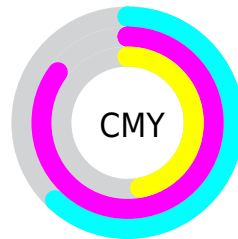
- Red (38%)
- Green (15%)
- Blue (53%)



- Red (38%)
- Yellow (15%)
- Blue (53%)



- Cyan (28%)
- Magenta (71%)
- Yellow (0%)
- Black (47%)



- Cyan (62%)
- Magenta (85%)
- Yellow (47%)

Brightness & Saturation Gradients

These gradients show how the Hex color 612787 changes by changing the brightness by 10 percent. The first figure shows a shift by +10% for each color and the second figure -10%.

Similar to the brightness gradients but the following saturation gradients show a change of the Hex color 612787 by changing the saturation by 10% instead.

612787

612787

FFFFFF

470B6D

9759BD

2D0054

B373D9

17003D

CF8DF6

000226

ECA8FF

00010E

FFC4FF

000000

FFE0FF

FFFDFF

612787

612787

■ 5C1A87

■ 663587

■ 560C87

■ 6C4287

■ 520087

■ 714F87

■ 765D87

■ 7C6B87

■ 817887

■ 868587

■ 8C9387

■ 91A187

Harmonies

Analogous

The Analogous color harmony consists of three colors that are next to each other on the color wheel.



0042A0



612787



89005D

Triad

The Triadic color harmony groups three colors that are evenly spaced from another and form a triangle on the color wheel.



612787



673900



00575C

Complementary

The Complementary color scheme is a pair of colors which are on the opposite of each other on the color wheel.



612787



4D8727

Split Complementary

Split-complementary colors differ from the complementary color scheme. The scheme consists of three colors, the original color and two neighbors of the complement color.



00552A



612787



3E4900

Square

The Square scheme is like the rectangle color scheme, but the four colors are evenly spaced on the color wheel.



612787



841C00



005100



005687

Rectangle

The Rectangle color scheme consists of four colors that form a rectangle on the color wheel.



612787



92003E



005100



00564B

Sweetspot

The Sweet Spot groups the original color and five complimentary colors.



612787



A18BB0



274D87



504359



D9D9D9



595959

Same Dimension

The Same Dimension uses a secret algorithm to generate beautiful new colors.



612787



751AB0



87277D



403C42



4F0082



020003

Inverse Universe

The Inverse Universe completely reimagines the original color for something new.



87274D



B01A56



278731



423C3E



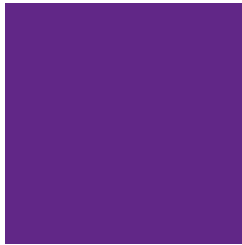
820033



030001

Previews

White Background



This preview shows how the Hex color 612787 looks on a white background.

Color Contrast Check

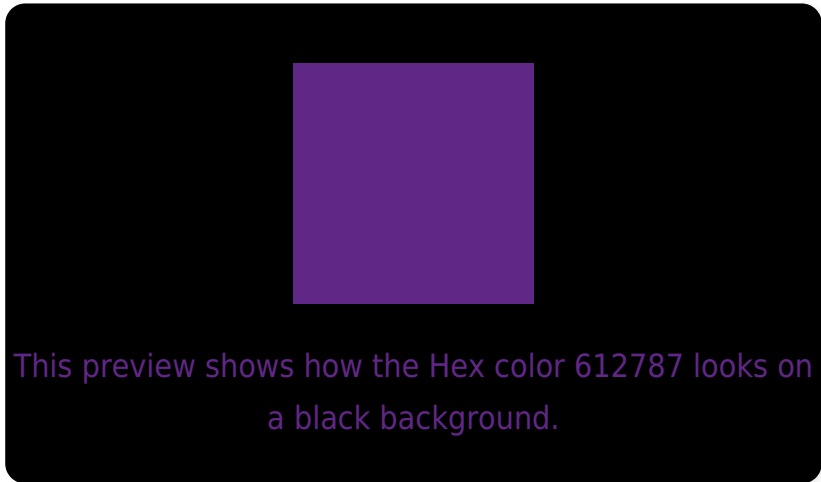
Large Text (above 18pt) WCAG AA ✓ Pass

Any Text WCAG AA ✓ Pass

Large Text (above 18pt) WCAG AAA ✓ Pass

Any Text WCAG AAA ✓ Pass

Black Background



Color Contrast Check

Large Text (above 18pt) WCAG AA × Fail

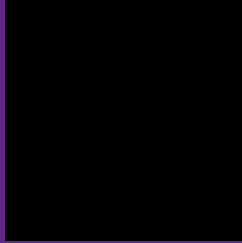
Any Text WCAG AA × Fail

Large Text (above 18pt) WCAG AAA × Fail

Any Text WCAG AAA × Fail

If you want to check with other color combinations, try the [Color Contrast Checker](#).

Hex 612787 Background



This preview shows how black text looks on a background with the Hex color 612787.



This preview shows how white text looks on a background with the Hex color 612787.

Color Blindness Simulation

Color vision deficiency is a very complex topic, and I could not describe the different causes any better than Wikipedia does, so if you want to learn more, you should check out their [article about color blindness](#).

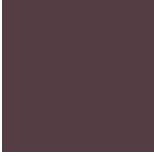
Dichromacy



Original Color
612787

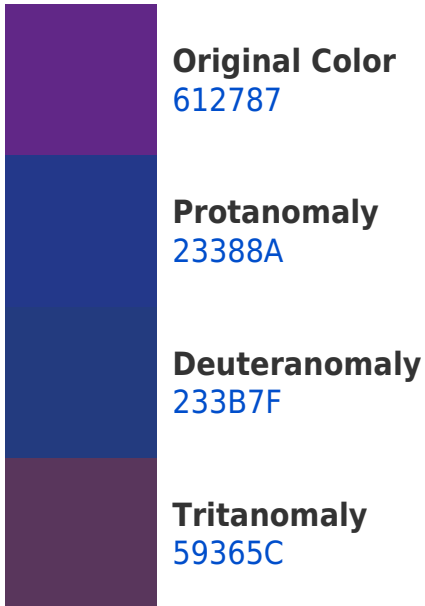
Protanopia
00428C

Deuteranopia
00467B



Tritanopia
553E43

Trichromacy



Monochromacy



CSS Examples

Text

The CSS property to change the color of the text to Hex 612787 is called "color". The color property can be set on classes, ids or directly on the HTML element.

This example shows how text in the color #612787 looks like.

```
.text, #text, p{  
    color:#612787  
}
```

If you want to add a text shadow in that color use the text-shadow property, you can generate a text shadow directly with our [CSS Text Shadow Generator](#).

Here you see how black text with a 4 pixel #612787 colored shadow looks like.

```
.shadow{ text-shadow: 4px 4px 2px #612787
}
```

Border

The CSS property to change the border of an element to Hex 612787 is called "border". The border property can be set on classes, ids or directly on the HTML element.

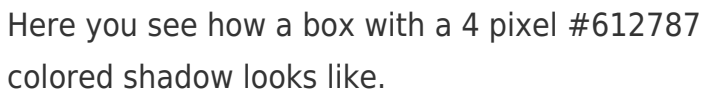
This example shows the color as border, it can be applied via the CSS property "border" or "border-color".

```
.border, #border, table{ border:4px solid
#612787 }
```

If only the border color should be changed use the property `border-color`.

```
.border{ border-color:#612787 }
```

If you want to add a box shadow in that color use:



Here you see how a box with a 4 pixel #612787 colored shadow looks like.

```
.boxshadow{ -moz-box-shadow:4px 4px 4px  
4px #612787; -webkit-box-shadow:4px 4px  
4px 4px #612787; box-shadow:4px 4px 4px  
4px #612787 }
```

Background

The CSS property to change the background color of an element to Hex 612787 is called "background". The background property can be set on classes, ids or directly on the HTML element.

```
.background, #background, body{  
background:#612787 }
```

If only the background color should be changed can be used:

```
.background{ background-color:#612787 }
```

This example shows the color as background, it is applied via the CSS property "background".

To optimize and compress your CSS code, you can use our [online CSS compressor and optimizer](#) based on csstidy. If you want to create a linear or radial gradient as background or border, check our [CSS Gradient Generator](#).

Hey! You found this booklet interesting? Support Converting Colors with the new Membership Option!

The pro membership hides all ads, plus gives you double the colors in the color bucket, and more awesome pro features!

[Learn more, Memberships starting at \\$2.50/m!](#)

**Follow me
on Twitter!**

@ConvertingColor