

# Converting Colors

Hex(65584F)

Have a look what the booklet for  
Hex(65584F) contains.

<b>Hex(65584F)</b> .....	3
<b><i>Conversions</i></b> .....	4
<b><i>Details</i></b> .....	6
<b><i>Harmonies</i></b> .....	11
<b><i>Previews</i></b> .....	23
<b><i>Color Blindness Simulation</i></b> .....	26
<b><i>CSS Examples</i></b> .....	29

# Color

**Hex(65584F)**

# Conversions

## Conversions Part 1

<b>Format</b>	<b>Color</b>
Hex	65584F
RGB	101, 88, 79
RGB Percent	40%, 35%, 31%
CMY	0.6039, 0.6549, 0.6902
CMYK	0.00, 0.13, 0.22, 0.60
HSL	25°, 12%, 35%
HSV	25°, 22%, 40%
XYZ	10.2678, 10.3107, 8.8461
YIQ	90.8610, 10.6370, -0.0430

# Conversions

## Conversions Part 2

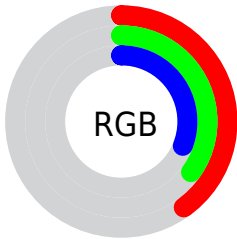
<b>Format</b>	<b>Color</b>
<b>R<sub>YB</sub></b>	101, 94, 79
Decimal	6641743
CIE <sub>Lab</sub>	38.39, 3.67, 7.16
CIE <sub>LCh</sub>	38, 8.049, 62.846
Yxy	10.3107, 0.3490, 0.3504
Android (android.graphics.Color)	4284831823 (0xFF65584F)
YUV	90.8610, -5.8475, 8.8919
Hunter-Lab	32.1102, 0.8858, 6.1432

# Details

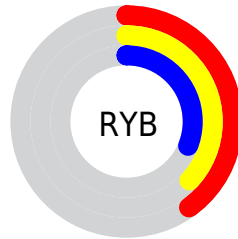
The Hex color **65584F** is a dark color, and the websafe version is hex **666666**. A complement of this color would be **4F5C65**, and the grayscale version is **5B5B5B**.

A 20% lighter version of the original color is **988A80**, and **362B23** is the 20% darker color. If you saturate the color by 10%, you get **655245**, and if you desaturate by 10%, it is **655E59**.

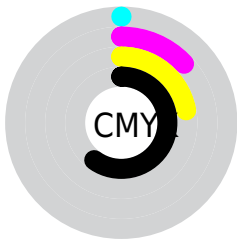
# Distribution



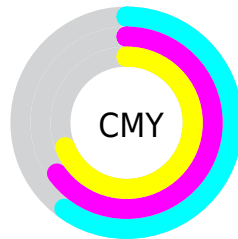
- Red (40%)
- Green (35%)
- Blue (31%)



- Red (40%)
- Yellow (37%)
- Blue (31%)



- Cyan (0%)
- Magenta (13%)
- Yellow (22%)
- Black (60%)



- Cyan (60%)
- Magenta (65%)
- Yellow (69%)

# Brightness & Saturation Gradients

These gradients show how the Hex color 65584F changes by changing the brightness by 10 percent. The first figure shows a shift by +10% for each color and the second figure -10%.

Similar to the brightness gradients but the following saturation gradients show a change of the Hex color 65584F by changing the saturation by 10% instead.





65584F



65584F

FFFFFF



4D4138



988A80



362B23



B3A49A



21160D



CFBFB5



000000



EBDBD0



FFF8ED



65584F



65584F



655245



655E59



654C3B



656463

■ 654631

■ 656A6D

■ 654027

■ 657077

■ 653A1D

■ 657682

■ 653412

■ 657C8C

■ 652E08

■ 658296

■ 652900

■ 6588A0

■ 658EAA

# Harmonies

## Analogous

The Analogous color harmony consists of three colors that are next to each other on the color wheel.



685654



65584F



5F5A4D

# Triad

The Triadic color harmony groups three colors that are evenly spaced from another and form a triangle on the color wheel.



65584F



4B5E5B



5C5965

# Complementary

The Complementary color scheme is a pair of colors which are on the opposite of each other on the color wheel.



65584F



4F5C65

# Split Complementary

Split-complementary colors differ from the complementary color scheme. The scheme consists of three colors, the original color and two neighbors of the complement color.



545B67



65584F



4A5E61

# Square

The Square scheme is like the rectangle color scheme, but the four colors are evenly spaced on the color wheel.



65584F



505E54



4D5D66



645760

# Rectangle

The Rectangle color scheme consists of four colors that form a rectangle on the color wheel.



65584F



5A5C4E



4D5D66



5A5966



# Sweetspot

The Sweet Spot groups the original color and five complimentary colors.



65584F



827D79



654F5C



423F3D



C2C2C2



424242



# Same Dimension

The Same Dimension uses a secret algorithm to generate beautiful new colors.



65584F



826E60



65634F



33302E



732F00



F26300



# Inverse Universe

The Inverse Universe completely reimagines the original color for something new.



4F5C65



607482



4F5165



2E3133



004473

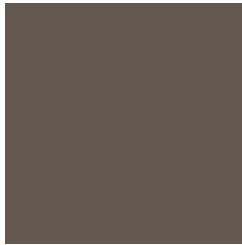


008FF2



# Previews

## White Background



This preview shows how the Hex color 65584F looks on a white background.

## Color Contrast Check

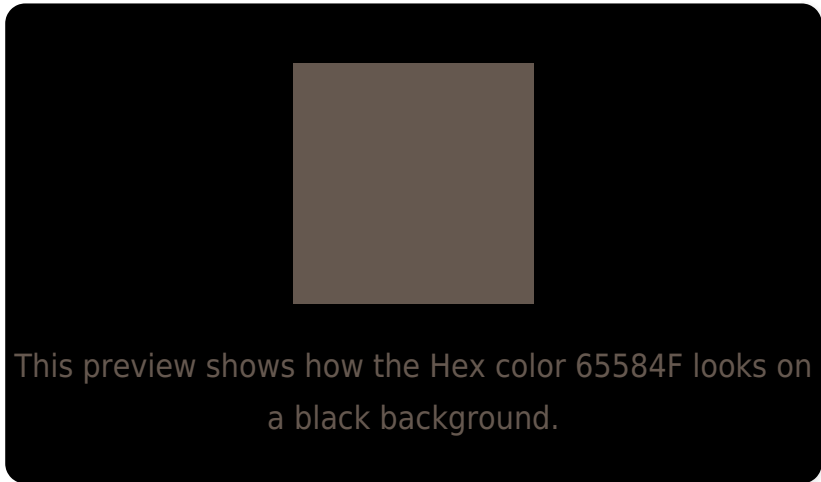
Large Text (above 18pt) WCAG AA ✓ Pass

Any Text WCAG AA ✓ Pass

Large Text (above 18pt) WCAG AAA ✓ Pass

Any Text WCAG AAA × Fail

# Black Background



## Color Contrast Check

Large Text (above 18pt) WCAG AA ✓ Pass

Any Text WCAG AA × Fail

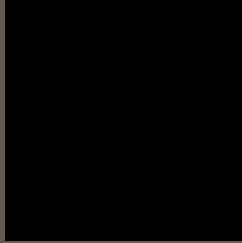
Large Text (above 18pt) WCAG AAA × Fail

Any Text WCAG AAA × Fail

If you want to check with other color combinations, try the [Color Contrast Checker](#).



## Hex 65584F Background



This preview shows how black text looks on a background with the Hex color 65584F.



This preview shows how white text looks on a background with the Hex color 65584F.

# Color Blindness Simulation

Color vision deficiency is a very complex topic, and I could not describe the different causes any better than Wikipedia does, so if you want to learn more, you should check out their [article about color blindness](#).


## Dichromacy



**Original Color**  
65584F

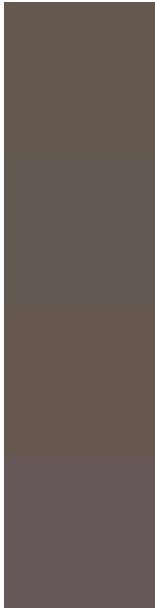
**Protanopia**  
5E5A50

**Deuteranopia**  
67574F



**Tritanopia**  
67565D

# Trichromacy



**Original Color**  
65584F

**Protanomaly**  
615950

**Deuteranomaly**  
66574F

**Tritanomaly**  
665758

# Monochromacy



**Original Color**  
65584F

**Achromatopsia**  
5B5B5B

**Achromatomaly**  
5F5A57

# CSS Examples

## Text

The CSS property to change the color of the text to Hex 65584F is called "color". The color property can be set on classes, ids or directly on the HTML element.

This example shows how text in the color #65584F looks like.

```
.text, #text, p{  
    color:#65584F  
}
```

If you want to add a text shadow in that color use the text-shadow property, you can generate a text shadow directly with our [CSS Text Shadow Generator](#).

Here you see how black text with a 4 pixel #65584F colored shadow looks like.

```
.shadow{ text-shadow: 4px 4px 2px #65584F
}
```

## Border

The CSS property to change the border of an element to Hex 65584F is called "border". The border property can be set on classes, ids or directly on the HTML element.

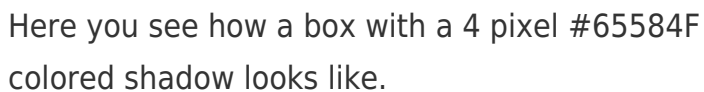
This example shows the color as border, it can be applied via the CSS property "border" or "border-color".

```
.border, #border, table{ border:4px solid
#65584F }
```

If only the border color should be changed use the property `border-color`.

```
.border{ border-color:#65584F }
```

If you want to add a box shadow in that color use:



Here you see how a box with a 4 pixel #65584F colored shadow looks like.

```
.boxshadow{ -moz-box-shadow:4px 4px 4px  
4px #65584F; -webkit-box-shadow:4px 4px  
4px 4px #65584F; box-shadow:4px 4px 4px  
4px #65584F }
```

# Background

The CSS property to change the background color of an element to Hex 65584F is called "background". The background property can be set on classes, ids or directly on the HTML element.

```
.background, #background, body{  
background:#65584F }
```

If only the background color should be changed can be used:

```
.background{ background-color:#65584F }
```

This example shows the color as background, it is applied via the CSS property "background".

To optimize and compress your CSS code, you can use our [online CSS compressor and optimizer](#) based on csstidy. If you want to create a linear or radial gradient as background or border, check our [CSS Gradient Generator](#).



Hey! You found this booklet interesting? Support Converting Colors with the new Membership Option!

The pro membership hides all ads, plus gives you double the colors in the color bucket, and more awesome pro features!

**[Learn more, Memberships starting at \\$2.50/m!](#)**

**Follow me  
on Twitter!**

@ConvertingColor