

# Converting Colors

Hex(664753)

Have a look what the booklet for  
Hex(664753) contains.

<b>Hex(664753)</b> .....	3
<b><i>Conversions</i></b> .....	4
<b><i>Details</i></b> .....	6
<b><i>Harmonies</i></b> .....	11
<b><i>Previews</i></b> .....	23
<b><i>Color Blindness Simulation</i></b> .....	26
<b><i>CSS Examples</i></b> .....	29

# Color

**Hex(664753)**

# Conversions

## Conversions Part 1

<b>Format</b>	<b>Color</b>
Hex	664753
RGB	102, 71, 83
RGB Percent	40%, 28%, 33%
CMY	0.6000, 0.7216, 0.6745
CMYK	0.00, 0.30, 0.19, 0.60
HSL	337°, 18%, 34%
HSV	337°, 30%, 40%
XYZ	9.2941, 7.9558, 9.2294
YIQ	81.6370, 14.6240, 10.3040

# Conversions

## Conversions Part 2

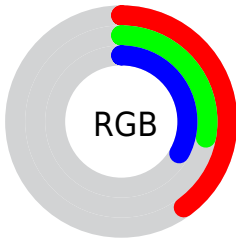
<b>Format</b>	<b>Color</b>
<b>R<sub>YB</sub></b>	102, 71, 83
Decimal	6702931
CIE <sub>Lab</sub>	33.89, 15.31, -1.84
CIE <sub>LCh</sub>	34, 15.416, 353.157
Yxy	7.9558, 0.3510, 0.3005
Android (android.graphics.Color)	4284893011 (0xFF664753)
YUV	81.6370, 0.6720, 17.8584
Hunter-Lab	28.2060, 9.4564, 0.3437

# Details

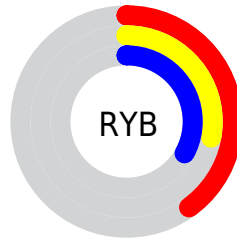
The Hex color **664753** is a dark color, and the websafe version is hex **663333**. A complement of this color would be **47665A**, and the grayscale version is **525252**.

A 20% lighter version of the original color is **9A7884**, and **361B26** is the 20% darker color. If you saturate the color by 10%, you get **663D4D**, and if you desaturate by 10%, it is **665159**.

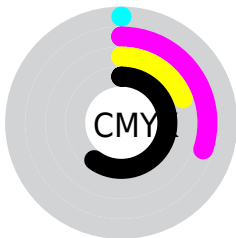
# Distribution



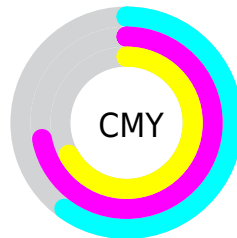
- Red (40%)
- Green (28%)
- Blue (33%)



- Red (40%)
- Yellow (28%)
- Blue (33%)



- Cyan (0%)
- Magenta (30%)
- Yellow (19%)
- Black (60%)



- Cyan (60%)
- Magenta (72%)
- Yellow (67%)

# Brightness & Saturation Gradients

These gradients show how the Hex color 664753 changes by changing the brightness by 10 percent. The first figure shows a shift by +10% for each color and the second figure -10%.

Similar to the brightness gradients but the following saturation gradients show a change of the Hex color 664753 by changing the saturation by 10% instead.



■ 664753

■ 664753

FFFFFF

■ 4E303C

■ 9A7884

■ 361B26

■ B5929E

■ 220212

■ D0ACB9

■ 000000

■ EDC8D5

■ FFE4F1

■ 664753

■ 664753

■ 663D4D

■ 665159

■ 663346

■ 665B60

662840

666666

661E3A

66706C

661434

667A72

660A2D

668479

660027

668E7F

669985

66A38B

# Harmonies

## Analogous

The Analogous color harmony consists of three colors that are next to each other on the color wheel.



5D495E



664753



684747

# Triad

The Triadic color harmony groups three colors that are evenly spaced from another and form a triangle on the color wheel.



664753



4F5239



2F5563

# Complementary

The Complementary color scheme is a pair of colors which are on the opposite of each other on the color wheel.



664753



47665A

# Split Complementary

Split-complementary colors differ from the complementary color scheme. The scheme consists of three colors, the original color and two neighbors of the complement color.



2B5659



664753



415541

# Square

The Square scheme is like the rectangle color scheme, but the four colors are evenly spaced on the color wheel.



664753



5B4E38



33564C



3D5268

# Rectangle

The Rectangle color scheme consists of four colors that form a rectangle on the color wheel.



664753



664940



33564C



2C5660



# Sweetspot

The Sweet Spot groups the original color and five complimentary colors.



664753



85797D



5A4766



423B3E



C2C2C2



424242



# Same Dimension

The Same Dimension uses a secret algorithm to generate beautiful new colors.



664753



855567



664A47



332E30



73002C



F2005E



# Inverse Universe

The Inverse Universe completely reimagines the original color for something new.



664753



855567



476366



332E30



73002C

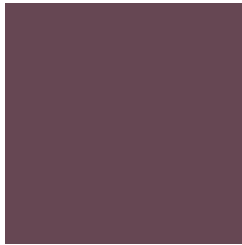


F2005E



# Previews

## White Background



This preview shows how the Hex color 664753 looks on a white background.

## Color Contrast Check

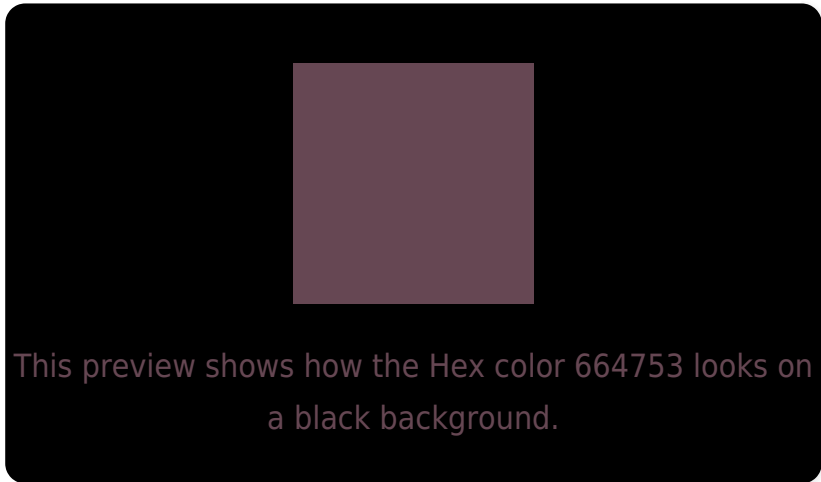
Large Text (above 18pt) WCAG AA ✓ Pass

Any Text WCAG AA ✓ Pass

Large Text (above 18pt) WCAG AAA ✓ Pass

Any Text WCAG AAA ✓ Pass

# Black Background



## Color Contrast Check

Large Text (above 18pt) WCAG AA × Fail

Any Text WCAG AA × Fail

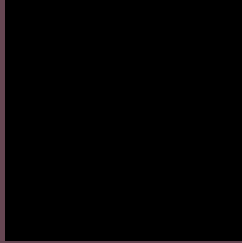
Large Text (above 18pt) WCAG AAA × Fail

Any Text WCAG AAA × Fail

If you want to check with other color combinations, try the [Color Contrast Checker](#).



## Hex 664753 Background



This preview shows how black text looks on a background with the Hex color 664753.



This preview shows how white text looks on a background with the Hex color 664753.

# Color Blindness Simulation

Color vision deficiency is a very complex topic, and I could not describe the different causes any better than Wikipedia does, so if you want to learn more, you should check out their [article about color blindness](#).


## Dichromacy



**Original Color**  
664753

**Protanopia**  
4F4F58

**Deuteranopia**  
574D52



**Tritanopia**  
65484D

# Trichromacy



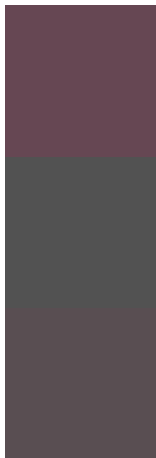
**Original Color**  
664753

**Protanomaly**  
574C56

**Deuteranomaly**  
5C4B52

**Tritanomaly**  
65484F

# Monochromacy



**Original Color**  
664753

**Achromatopsia**  
525252

**Achromatomaly**  
594E52

# CSS Examples

## Text

The CSS property to change the color of the text to Hex 664753 is called "color". The color property can be set on classes, ids or directly on the HTML element.

This example shows how text in the color #664753 looks like.

```
.text, #text, p{  
    color:#664753  
}
```

If you want to add a text shadow in that color use the text-shadow property, you can generate a text shadow directly with our [CSS Text Shadow Generator](#).

Here you see how black text with a 4 pixel #664753 colored shadow looks like.

```
.shadow{ text-shadow: 4px 4px 2px #664753
}
```

## Border

The CSS property to change the border of an element to Hex 664753 is called "border". The border property can be set on classes, ids or directly on the HTML element.

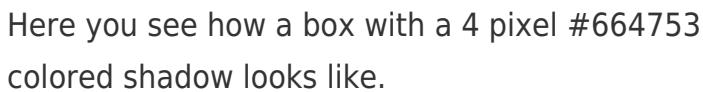
This example shows the color as border, it can be applied via the CSS property "border" or "border-color".

```
.border, #border, table{ border:4px solid
#664753 }
```

If only the border color should be changed use the property `border-color`.

```
.border{ border-color:#664753 }
```

If you want to add a box shadow in that color use:



Here you see how a box with a 4 pixel #664753 colored shadow looks like.

```
.boxshadow{ -moz-box-shadow:4px 4px 4px  
4px #664753; -webkit-box-shadow:4px 4px  
4px 4px #664753; box-shadow:4px 4px 4px  
4px #664753 }
```

# Background

The CSS property to change the background color of an element to Hex 664753 is called "background". The background property can be set on classes, ids or directly on the HTML element.

```
.background, #background, body{  
background:#664753 }
```

If only the background color should be changed can be used:

```
.background{ background-color:#664753 }
```

This example shows the color as background, it is applied via the CSS property "background".

To optimize and compress your CSS code, you can use our [online CSS compressor and optimizer](#) based on csstidy. If you want to create a linear or radial gradient as background or border, check our [CSS Gradient Generator](#).



Hey! You found this booklet interesting? Support Converting Colors with the new Membership Option!

The pro membership hides all ads, plus gives you double the colors in the color bucket, and more awesome pro features!

**[Learn more, Memberships starting at \\$2.50/m!](#)**

**Follow me  
on Twitter!**

@ConvertingColor