

Converting Colors

Hex(67129D)

Have a look what the booklet for
Hex(67129D) contains.

| | |
|--|----|
| Hex(67129D) | 3 |
| <i>Conversions</i> | 4 |
| <i>Details</i> | 6 |
| <i>Harmonies</i> | 11 |
| <i>Previews</i> | 23 |
| <i>Color Blindness Simulation</i> | 26 |
| <i>CSS Examples</i> | 29 |

Color

Hex(67129D)

Conversions

Conversions Part 1

| Format | Color |
|-------------|--------------------------|
| Hex | 67129D |
| RGB | 103, 18, 157 |
| RGB Percent | 40%, 7%, 62% |
| CMY | 0.5961, 0.9294, 0.3843 |
| CMYK | 0.34, 0.89, 0.00, 0.38 |
| HSL | 277°, 79%, 34% |
| HSV | 277°, 89%, 62% |
| XYZ | 11.8956, 5.7505, 32.3813 |
| YIQ | 59.2610, 6.0410, 61.2490 |

Conversions

Conversions Part 2

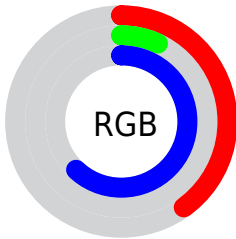
| Format | Color |
|-------------------------------------|-------------------------------|
| RYB | 103, 18, 157 |
| Decimal | 6754973 |
| CIELab | 28.77, 57.11, -56.30 |
| CIElCh | 29, 80.197, 315.409 |
| Yxy | 5.7505, 0.2378, 0.1149 |
| Android (android.graphics.Color) | 4284945053 (0xFF67129D) |
| YUV | 59.2610, 48.1853, 38.3591 |
| Hunter-Lab | 23.9802, 46.5815, -63.2752 |

Details

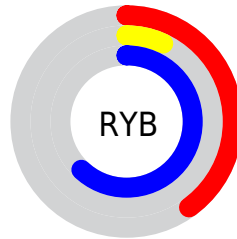
The Hex color **67129D** is a dark color, and the websafe version is hex **660099**. A complement of this color would be **489D12**, and the grayscale version is **3B3B3B**.

A 20% lighter version of the original color is **9F4CD5**, and **2E0068** is the 20% darker color. If you saturate the color by 10%, you get **61029D**, and if you desaturate by 10%, it is **6D229D**.

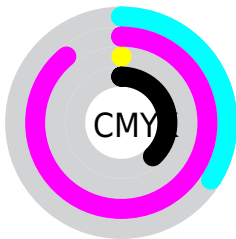
Distribution



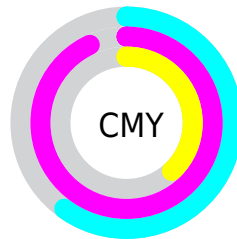
- Red (40%)
- Green (7%)
- Blue (62%)



- Red (40%)
- Yellow (7%)
- Blue (62%)



- Cyan (34%)
- Magenta (89%)
- Yellow (0%)
- Black (38%)



- Cyan (60%)
- Magenta (93%)
- Yellow (38%)

Brightness & Saturation Gradients

These gradients show how the Hex color 67129D changes by changing the brightness by 10 percent. The first figure shows a shift by +10% for each color and the second figure -10%.

Similar to the brightness gradients but the following saturation gradients show a change of the Hex color 67129D by changing the saturation by 10% instead.

67129D

67129D

FFFFFF

4B0082

9F4CD5

2E0068

BC67F1

130050

D982FF

000037

F79DFF

000221

FFB9FF

000006

FFD6FF

000000

FFF3FF

67129D

67129D

61029D

6D229D

60009D

73319D

79419D

7F519D

85619D

8C709D

92809D

98909D

9E9F9D

Harmonies

Analogous

The Analogous color harmony consists of three colors that are next to each other on the color wheel.



0043BF



67129D



9D0065

Triad

The Triadic color harmony groups three colors that are evenly spaced from another and form a triangle on the color wheel.



67129D



6C3600



005A64

Complementary

The Complementary color scheme is a pair of colors which are on the opposite of each other on the color wheel.



67129D



489D12

Split Complementary

Split-complementary colors differ from the complementary color scheme. The scheme consists of three colors, the original color and two neighbors of the complement color.



005821



67129D



364B00

Square

The Square scheme is like the rectangle color scheme, but the four colors are evenly spaced on the color wheel.



67129D



930000



005400



005A9D

Rectangle

The Rectangle color scheme consists of four colors that form a rectangle on the color wheel.



67129D



A8003C



005400



00594E

Sweetspot

The Sweet Spot groups the original color and five complimentary colors.



67129D



B795CC



124A9D



594566



E6E6E6



666666

Same Dimension

The Same Dimension uses a secret algorithm to generate beautiful new colors.



67129D



7D00CC



9D128F



4C474F



57008F



09000F

Inverse Universe

The Inverse Universe completely reimagines the original color for something new.



9D1248



CC004F



129D20



4F474A



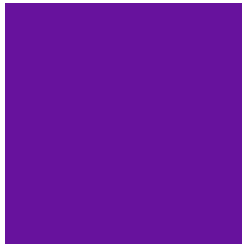
8F0037



0F0006

Previews

White Background



This preview shows how the Hex color 67129D looks on a white background.

Color Contrast Check

Large Text (above 18pt) WCAG AA ✓ Pass

Any Text WCAG AA ✓ Pass

Large Text (above 18pt) WCAG AAA ✓ Pass

Any Text WCAG AAA ✓ Pass

Black Background



Color Contrast Check

Large Text (above 18pt) WCAG AA × Fail

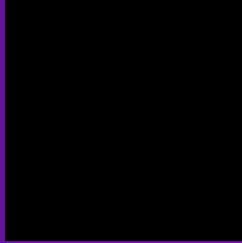
Any Text WCAG AA × Fail

Large Text (above 18pt) WCAG AAA × Fail

Any Text WCAG AAA × Fail

If you want to check with other color combinations, try the [Color Contrast Checker](#).

Hex 67129D Background



This preview shows how black text looks on a background with the Hex color 67129D.



This preview shows how white text looks on a background with the Hex color 67129D.

Color Blindness Simulation

Color vision deficiency is a very complex topic, and I could not describe the different causes any better than Wikipedia does, so if you want to learn more, you should check out their [article about color blindness](#).

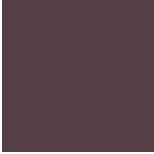
Dichromacy



Original Color
67129D

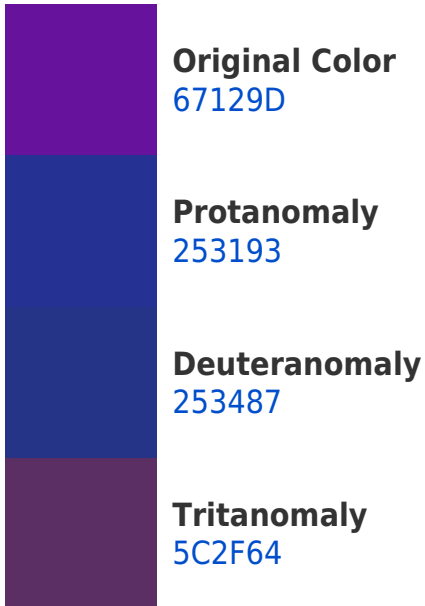
Protanopia
00438D

Deuteranopia
00477A

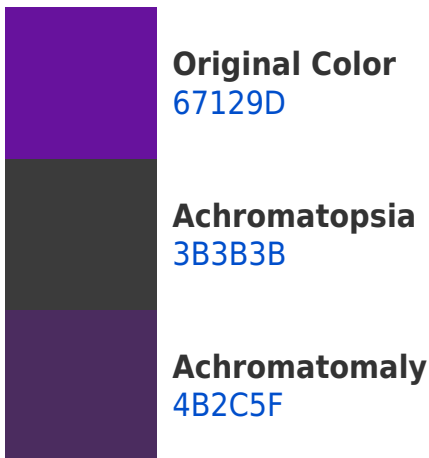


Tritanopia
563F44

Trichromacy



Monochromacy



CSS Examples

Text

The CSS property to change the color of the text to Hex 67129D is called "color". The color property can be set on classes, ids or directly on the HTML element.

This example shows how text in the color #67129D looks like.

```
.text, #text, p{  
    color:#67129D  
}
```

If you want to add a text shadow in that color use the text-shadow property, you can generate a text shadow directly with our [CSS Text Shadow Generator](#).

Here you see how black text with a 4 pixel #67129D colored shadow looks like.

```
.shadow{ text-shadow: 4px 4px 2px #67129D
}
```

Border

The CSS property to change the border of an element to Hex 67129D is called "border". The border property can be set on classes, ids or directly on the HTML element.

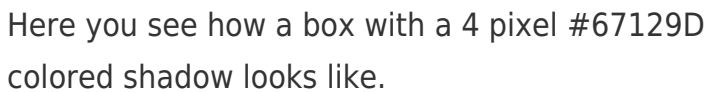
This example shows the color as border, it can be applied via the CSS property "border" or "border-color".

```
.border, #border, table{ border:4px solid
#67129D }
```

If only the border color should be changed use the property `border-color`.

```
.border{ border-color:#67129D }
```

If you want to add a box shadow in that color use:



Here you see how a box with a 4 pixel #67129D colored shadow looks like.

```
.boxshadow{ -moz-box-shadow:4px 4px 4px  
4px #67129D; -webkit-box-shadow:4px 4px  
4px 4px #67129D; box-shadow:4px 4px 4px  
4px #67129D }
```

Background

The CSS property to change the background color of an element to Hex 67129D is called "background". The background property can be set on classes, ids or directly on the HTML element.

```
.background, #background, body{  
background:#67129D }
```

If only the background color should be changed can be used:

```
.background{ background-color:#67129D }
```

This example shows the color as background, it is applied via the CSS property "background".

To optimize and compress your CSS code, you can use our [online CSS compressor and optimizer](#) based on csstidy. If you want to create a linear or radial gradient as background or border, check our [CSS Gradient Generator](#).

Hey! You found this booklet interesting? Support Converting Colors with the new Membership Option!

The pro membership hides all ads, plus gives you double the colors in the color bucket, and more awesome pro features!

[Learn more, Memberships starting at \\$2.50/m!](#)

**Follow me
on Twitter!**

@ConvertingColor