

# Converting Colors

Hex(68454F)

Have a look what the booklet for  
Hex(68454F) contains.

<b>Hex(68454F)</b> .....	3
<i><b>Conversions</b></i> .....	4
<i><b>Details</b></i> .....	6
<i><b>Harmonies</b></i> .....	11
<i><b>Previews</b></i> .....	23
<i><b>Color Blindness Simulation</b></i> .....	26
<i><b>CSS Examples</b></i> .....	29

# Color

**Hex(68454F)**

# Conversions

## Conversions Part 1

<b>Format</b>	<b>Color</b>
Hex	68454F
RGB	104, 69, 79
RGB Percent	41%, 27%, 31%
CMY	0.5922, 0.7294, 0.6902
CMYK	0.00, 0.34, 0.24, 0.59
HSL	343°, 20%, 34%
HSV	343°, 34%, 41%
XYZ	9.2483, 7.7638, 8.4083
YIQ	80.6050, 17.6500, 10.5300

# Conversions

## Conversions Part 2

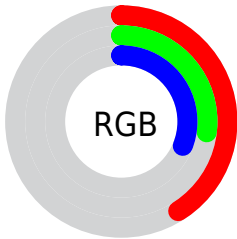
Format	Color
<a href="#">RYB</a>	<a href="#">104, 69, 79</a>
Decimal	<a href="#">6833487</a>
CIELab	<a href="#">33.49, 16.67, 0.15</a>
CIELCh	<a href="#">33, 16.672, 0.524</a>
Yxy	<a href="#">7.7638, 0.3638, 0.3054</a>
Android (android.graphics.Color)	<a href="#">4285023567 (0xFF68454F)</a>
YUV	<a href="#">80.6050, -0.7913, 20.5174</a>
Hunter-Lab	<a href="#">27.8636, 10.4853, 1.6129</a>

# Details

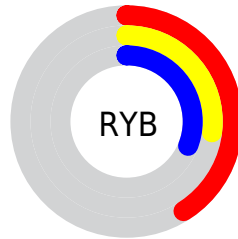
The Hex color **68454F** is a dark color, and the websafe version is hex **663333**. A complement of this color would be **45685E**, and the grayscale version is **515151**.

A 20% lighter version of the original color is **9C7680**, and **381923** is the 20% darker color. If you saturate the color by 10%, you get **683B48**, and if you desaturate by 10%, it is **684F56**.

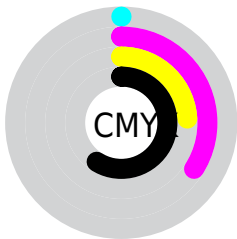
# Distribution



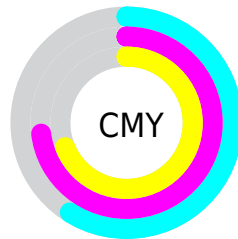
- Red (41%)
- Green (27%)
- Blue (31%)



- Red (41%)
- Yellow (27%)
- Blue (31%)



- Cyan (0%)
- Magenta (34%)
- Yellow (24%)
- Black (59%)



- Cyan (59%)
- Magenta (73%)
- Yellow (69%)

# Brightness & Saturation Gradients

These gradients show how the Hex color 68454F changes by changing the brightness by 10 percent. The first figure shows a shift by +10% for each color and the second figure -10%.

Similar to the brightness gradients but the following saturation gradients show a change of the Hex color 68454F by changing the saturation by 10% instead.





68454F



68454F

FFFFFF



4F2E38



9C7680



381923



B78F9A



23000D



D3AAB5



000000



F0C5D0



FFE1ED

FFFEFF



68454F



68454F



683B48



684F56

683040

685A5E

682639

686465

681B31

686F6D

68112A

687974

680722

68837C

68001E

688E83

68988A

68A392

# Harmonies

## Analogous

The Analogous color harmony consists of three colors that are next to each other on the color wheel.



60475C



68454F



694642

# Triad

The Triadic color harmony groups three colors that are evenly spaced from another and form a triangle on the color wheel.



68454F



4A5238



2D5465

# Complementary

The Complementary color scheme is a pair of colors which are on the opposite of each other on the color wheel.



68454F



45685E

# Split Complementary

Split-complementary colors differ from the complementary color scheme. The scheme consists of three colors, the original color and two neighbors of the complement color.



25565C



68454F



3B5541

# Square

The Square scheme is like the rectangle color scheme, but the four colors are evenly spaced on the color wheel.



68454F



584E34



2C564F



3E5069

# Rectangle

The Rectangle color scheme consists of four colors that form a rectangle on the color wheel.



68454F



65483B



2C564F



285463



# Sweetspot

The Sweet Spot groups the original color and five complimentary colors.



68454F



877A7D



5E4568



453D3F



C4C4C4



454545



# Same Dimension

The Same Dimension uses a secret algorithm to generate beautiful new colors.



68454F



875161



684C45



332E2F



730021



F20045



# Inverse Universe

The Inverse Universe completely reimagines the original color for something new.



68454F



875161



456168



332E2F



730021

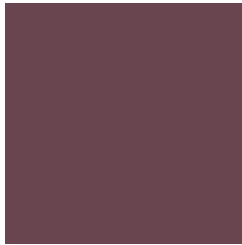


F20045



# Previews

## White Background



This preview shows how the Hex color 68454F looks on a white background.

## Color Contrast Check

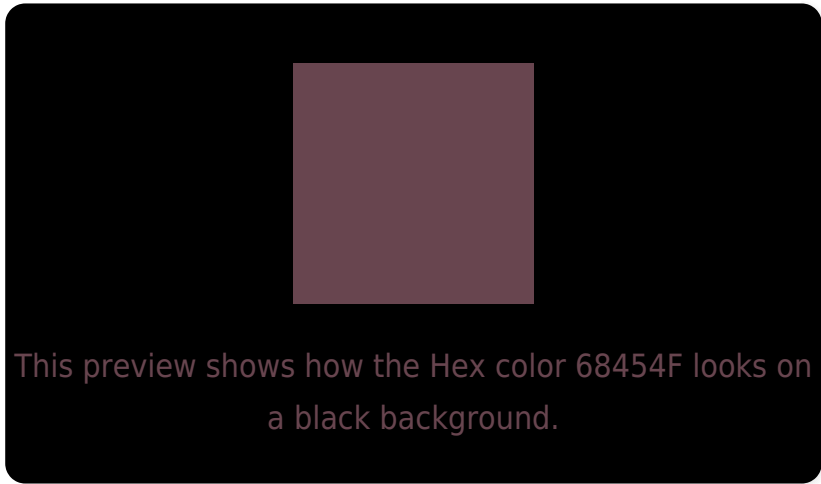
Large Text (above 18pt) WCAG AA ✓ Pass

Any Text WCAG AA ✓ Pass

Large Text (above 18pt) WCAG AAA ✓ Pass

Any Text WCAG AAA ✓ Pass

# Black Background



## Color Contrast Check

Large Text (above 18pt) WCAG AA × Fail

Any Text WCAG AA × Fail

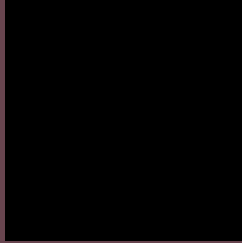
Large Text (above 18pt) WCAG AAA × Fail

Any Text WCAG AAA × Fail

If you want to check with other color combinations, try the [Color Contrast Checker](#).



## Hex 68454F Background



This preview shows how black text looks on a background with the Hex color 68454F.



This preview shows how white text looks on a background with the Hex color 68454F.

# Color Blindness Simulation

Color vision deficiency is a very complex topic, and I could not describe the different causes any better than Wikipedia does, so if you want to learn more, you should check out their [article about color blindness](#).

## Dichromacy



**Original Color**  
68454F

**Protanopia**  
4F4F55

**Deuteranopia**  
574C4E



**Tritanopia**  
68464B

# Trichromacy



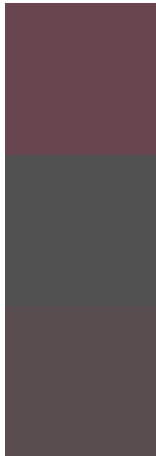
**Original Color**  
68454F

**Protanomaly**  
584B53

**Deuteranomaly**  
5D494E

**Tritanomaly**  
68464C

# Monochromacy



**Original Color**  
68454F

**Achromatopsia**  
515151

**Achromatomaly**  
594D50

# CSS Examples

## Text

The CSS property to change the color of the text to Hex 68454F is called "color". The color property can be set on classes, ids or directly on the HTML element.

This example shows how text in the color #68454F looks like.

```
.text, #text, p{  
    color:#68454F  
}
```

If you want to add a text shadow in that color use the text-shadow property, you can generate a text shadow directly with our [CSS Text Shadow Generator](#).

Here you see how black text with a 4 pixel #68454F colored shadow looks like.

```
.shadow{ text-shadow: 4px 4px 2px #68454F
}
```

## Border

The CSS property to change the border of an element to Hex 68454F is called "border". The border property can be set on classes, ids or directly on the HTML element.

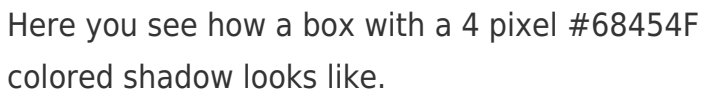
This example shows the color as border, it can be applied via the CSS property "border" or "border-color".

```
.border, #border, table{ border:4px solid
#68454F }
```

If only the border color should be changed use the property `border-color`.

```
.border{ border-color:#68454F }
```

If you want to add a box shadow in that color use:



Here you see how a box with a 4 pixel #68454F colored shadow looks like.

```
.boxshadow{ -moz-box-shadow:4px 4px 4px  
4px #68454F; -webkit-box-shadow:4px 4px  
4px 4px #68454F; box-shadow:4px 4px 4px  
4px #68454F }
```

# Background

The CSS property to change the background color of an element to Hex 68454F is called "background". The background property can be set on classes, ids or directly on the HTML element.

```
.background, #background, body{  
background:#68454F }
```

If only the background color should be changed can be used:

```
.background{ background-color:#68454F }
```

This example shows the color as background, it is applied via the CSS property "background".

To optimize and compress your CSS code, you can use our [online CSS compressor and optimizer](#) based on csstidy. If you want to create a linear or radial gradient as background or border, check our [CSS Gradient Generator](#).



Hey! You found this booklet interesting? Support Converting Colors with the new Membership Option!

The pro membership hides all ads, plus gives you double the colors in the color bucket, and more awesome pro features!

**[Learn more, Memberships starting at \\$2.50/m!](#)**

**Follow me  
on Twitter!**

@ConvertingColor