

Converting Colors

Hex(684B4F)

Have a look what the booklet for
Hex(684B4F) contains.

Hex(684B4F)	3
<i>Conversions</i>	4
<i>Details</i>	6
<i>Harmonies</i>	11
<i>Previews</i>	23
<i>Color Blindness Simulation</i>	26
<i>CSS Examples</i>	29

Color

Hex(684B4F)

Conversions

Conversions Part 1

Format	Color
Hex	684B4F
RGB	104, 75, 79
RGB Percent	41%, 29%, 31%
CMY	0.5922, 0.7059, 0.6902
CMYK	0.00, 0.28, 0.24, 0.59
HSL	352°, 16%, 35%
HSV	352°, 28%, 41%
XYZ	9.6363, 8.5397, 8.5376
YIQ	84.1270, 16.0000, 7.3920

Conversions

Conversions Part 2

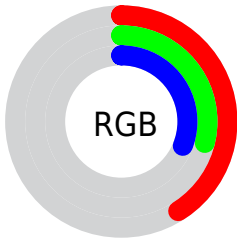
Format	Color
R_YB	104, 75, 79
Decimal	6835023
CIE _{Lab}	35.08, 12.96, 2.47
CIE _{LCh}	35, 13.195, 10.791
Yxy	8.5397, 0.3607, 0.3197
Android (android.graphics.Color)	4285025103 (0xFF684B4F)
YUV	84.1270, -2.5276, 17.4286
Hunter-Lab	29.2228, 7.7208, 3.1341

Details

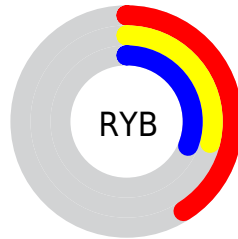
The Hex color **684B4F** is a dark color, and the websafe version is hex **663333**. A complement of this color would be **4B6864**, and the grayscale version is **545454**.

A 20% lighter version of the original color is **9C7C80**, and **381F23** is the 20% darker color. If you saturate the color by 10%, you get **684146**, and if you desaturate by 10%, it is **685558**.

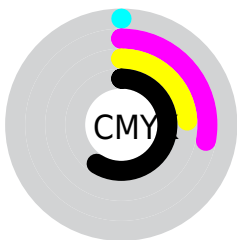
Distribution



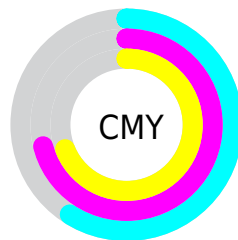
- Red (41%)
- Green (29%)
- Blue (31%)



- Red (41%)
- Yellow (29%)
- Blue (31%)



- Cyan (0%)
- Magenta (28%)
- Yellow (24%)
- Black (59%)



- Cyan (59%)
- Magenta (71%)
- Yellow (69%)

Brightness & Saturation Gradients

These gradients show how the Hex color 684B4F changes by changing the brightness by 10 percent. The first figure shows a shift by +10% for each color and the second figure -10%.

Similar to the brightness gradients but the following saturation gradients show a change of the Hex color 684B4F by changing the saturation by 10% instead.



684B4F



684B4F

FFFFFF



4F3438



9C7C80



381F23



B7969A



23080D



D3B1B5



000000



EFCCD0



FFE8ED



684B4F



684B4F



684146



685558



68363D



686061

 682C34

 686A6A

 68212B

 687573

 681722

 687F7C

 680D19

 688985

 680210

 68948E

 68000E

 689E97

 68A9A0

Harmonies

Analogous

The Analogous color harmony consists of three colors that are next to each other on the color wheel.



634C5A



684B4F



674C45

Triad

The Triadic color harmony groups three colors that are evenly spaced from another and form a triangle on the color wheel.



684B4F



4B5642



3E5566

Complementary

The Complementary color scheme is a pair of colors which are on the opposite of each other on the color wheel.



684B4F



4B6864

Split Complementary

Split-complementary colors differ from the complementary color scheme. The scheme consists of three colors, the original color and two neighbors of the complement color.



355860



684B4F



3F584B

Square

The Square scheme is like the rectangle color scheme, but the four colors are evenly spaced on the color wheel.



684B4F



57533E



375956



4B5267

Rectangle

The Rectangle color scheme consists of four colors that form a rectangle on the color wheel.



684B4F



634E40



375956



3A5665

Sweetspot

The Sweet Spot groups the original color and five complimentary colors.



684B4F



877C7E



644B68



453E3F



C4C4C4



454545

Same Dimension

The Same Dimension uses a secret algorithm to generate beautiful new colors.



684B4F



875B61



68554B



332E2F



730010



F20021

Inverse Universe

The Inverse Universe completely reimagines the original color for something new.



684B4F



875B61



4B5E68



332E2F



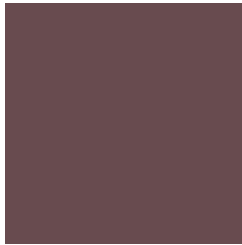
730010



F20021

Previews

White Background



This preview shows how the Hex color 684B4F looks on a white background.

Color Contrast Check

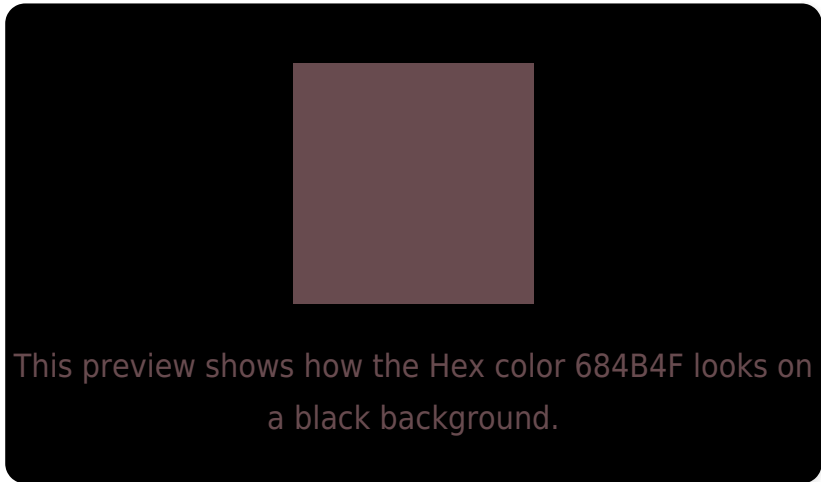
Large Text (above 18pt) WCAG AA ✓ Pass

Any Text WCAG AA ✓ Pass

Large Text (above 18pt) WCAG AAA ✓ Pass

Any Text WCAG AAA ✓ Pass

Black Background



Color Contrast Check

Large Text (above 18pt) WCAG AA × Fail

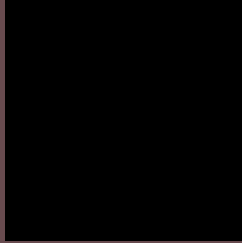
Any Text WCAG AA × Fail

Large Text (above 18pt) WCAG AAA × Fail

Any Text WCAG AAA × Fail

If you want to check with other color combinations, try the [Color Contrast Checker](#).

Hex 684B4F Background



This preview shows how black text looks on a background with the Hex color 684B4F.

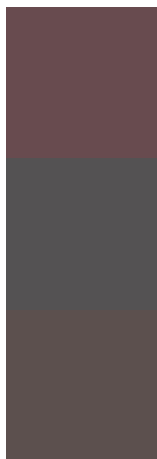


This preview shows how white text looks on a background with the Hex color 684B4F.

Color Blindness Simulation

Color vision deficiency is a very complex topic, and I could not describe the different causes any better than Wikipedia does, so if you want to learn more, you should check out their [article about color blindness](#).

Dichromacy



Original Color
684B4F

Protanopia
545253

Deuteranopia
5C504E



Tritanopia
684B50

Trichromacy



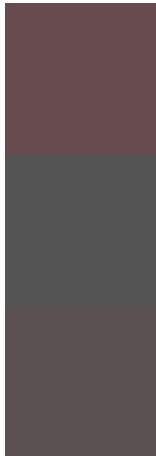
Original Color
684B4F

Protanomaly
5B4F52

Deuteranomaly
604E4E

Tritanomaly
684B50

Monochromacy



Original Color
684B4F

Achromatopsia
545454

Achromatomaly
5B5152

CSS Examples

Text

The CSS property to change the color of the text to Hex 684B4F is called "color". The color property can be set on classes, ids or directly on the HTML element.

This example shows how text in the color #684B4F looks like.

```
.text, #text, p{  
    color:#684B4F  
}
```

If you want to add a text shadow in that color use the text-shadow property, you can generate a text shadow directly with our [CSS Text Shadow Generator](#).

Here you see how black text with a 4 pixel #684B4F colored shadow looks like.

```
.shadow{ text-shadow: 4px 4px 2px #684B4F
}
```

Border

The CSS property to change the border of an element to Hex 684B4F is called "border". The border property can be set on classes, ids or directly on the HTML element.

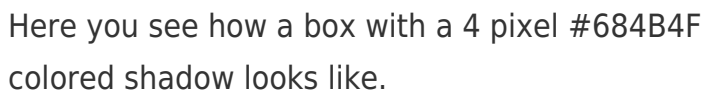
This example shows the color as border, it can be applied via the CSS property "border" or "border-color".

```
.border, #border, table{ border:4px solid
#684B4F }
```

If only the border color should be changed use the property `border-color`.

```
.border{ border-color:#684B4F }
```

If you want to add a box shadow in that color use:



Here you see how a box with a 4 pixel #684B4F colored shadow looks like.

```
.boxshadow{ -moz-box-shadow:4px 4px 4px  
4px #684B4F; -webkit-box-shadow:4px 4px  
4px 4px #684B4F; box-shadow:4px 4px 4px  
4px #684B4F }
```

Background

The CSS property to change the background color of an element to Hex 684B4F is called "background". The background property can be set on classes, ids or directly on the HTML element.

```
.background, #background, body{  
background:#684B4F }
```

If only the background color should be changed can be used:

```
.background{ background-color:#684B4F }
```

This example shows the color as background, it is applied via the CSS property "background".

To optimize and compress your CSS code, you can use our [online CSS compressor and optimizer](#) based on csstidy. If you want to create a linear or radial gradient as background or border, check our [CSS Gradient Generator](#).

Hey! You found this booklet interesting? Support Converting Colors with the new Membership Option!

The pro membership hides all ads, plus gives you double the colors in the color bucket, and more awesome pro features!

[Learn more, Memberships starting at \\$2.50/m!](#)

**Follow me
on Twitter!**

@ConvertingColor