

Converting Colors

Hex(684C4E)

Have a look what the booklet for
Hex(684C4E) contains.

Hex(684C4E)	3
<i>Conversions</i>	4
<i>Details</i>	6
<i>Harmonies</i>	11
<i>Previews</i>	23
<i>Color Blindness Simulation</i>	26
<i>CSS Examples</i>	29

Color

Hex(684C4E)

Conversions

Conversions Part 1

Format	Color
Hex	684C4E
RGB	104, 76, 78
RGB Percent	41%, 30%, 31%
CMY	0.5922, 0.7020, 0.6941
CMYK	0.00, 0.27, 0.25, 0.59
HSL	356°, 16%, 35%
HSV	356°, 27%, 41%
XYZ	9.6685, 8.6620, 8.3701
YIQ	84.6000, 16.0460, 6.5580

Conversions

Conversions Part 2

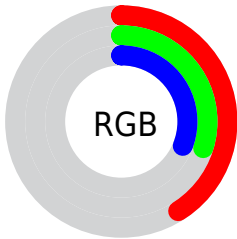
Format	Color
RYB	104, 76, 78
Decimal	6835278
CIELab	35.33, 12.18, 3.45
CIElCh	35, 12.656, 15.831
Yxy	8.6620, 0.3621, 0.3244
Android (android.graphics.Color)	4285025358 (0xFF684C4E)
YUV	84.6000, -3.2538, 17.0138
Hunter-Lab	29.4313, 7.1346, 3.7402

Details

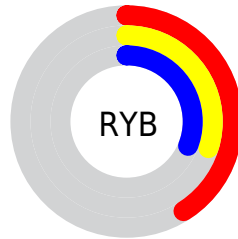
The Hex color **684C4E** is a dark color, and the websafe version is hex **663333**. A complement of this color would be **4C6866**, and the grayscale version is **555555**.

A 20% lighter version of the original color is **9C7D7F**, and **382022** is the 20% darker color. If you saturate the color by 10%, you get **684244**, and if you desaturate by 10%, it is **685658**.

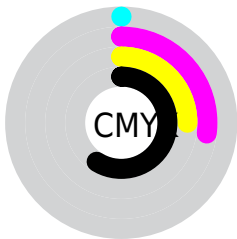
Distribution



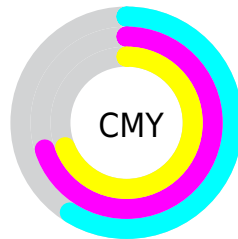
- Red (41%)
- Green (30%)
- Blue (31%)



- Red (41%)
- Yellow (30%)
- Blue (31%)



- Cyan (0%)
- Magenta (27%)
- Yellow (25%)
- Black (59%)



- Cyan (59%)
- Magenta (70%)
- Yellow (69%)

Brightness & Saturation Gradients

These gradients show how the Hex color 684C4E changes by changing the brightness by 10 percent. The first figure shows a shift by +10% for each color and the second figure -10%.

Similar to the brightness gradients but the following saturation gradients show a change of the Hex color 684C4E by changing the saturation by 10% instead.



684C4E



684C4E

FFFFFF



4F3537



9C7D7F



382022



B79799



230A0B



D3B2B4



000000



EFCDCF



FFE9EB



684C4E



684C4E



684244



685658



68373B



686161

■ 682D31

■ 686B6B

■ 682227

■ 687675

■ 68181E

■ 68807E

■ 680E14

■ 688A88

■ 68030A

■ 689592

■ 680007

■ 689F9B

■ 68AAA5

Harmonies

Analogous

The Analogous color harmony consists of three colors that are next to each other on the color wheel.



644C58



684C4E



664E45

Triad

The Triadic color harmony groups three colors that are evenly spaced from another and form a triangle on the color wheel.



684C4E



4A5745



415566

Complementary

The Complementary color scheme is a pair of colors which are on the opposite of each other on the color wheel.



684C4E



4C6866

Split Complementary

Split-complementary colors differ from the complementary color scheme. The scheme consists of three colors, the original color and two neighbors of the complement color.



385861



684C4E



3F594E

Square

The Square scheme is like the rectangle color scheme, but the four colors are evenly spaced on the color wheel.



684C4E



555440



385958



4E5266

Rectangle

The Rectangle color scheme consists of four colors that form a rectangle on the color wheel.



684C4E



625041



385958



3D5665

Sweetspot

The Sweet Spot groups the original color and five complimentary colors.



684C4E



877C7D



664C68



453E3E



C4C4C4



454545

Same Dimension

The Same Dimension uses a secret algorithm to generate beautiful new colors.



684C4E



875C5F



68584C



332E2E



730008



F20011

Inverse Universe

The Inverse Universe completely reimagines the original color for something new.



684C4E



875C5F



4C5C68



332E2E



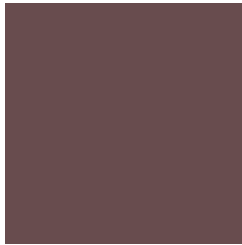
730008



F20011

Previews

White Background



This preview shows how the Hex color 684C4E looks on a white background.

Color Contrast Check

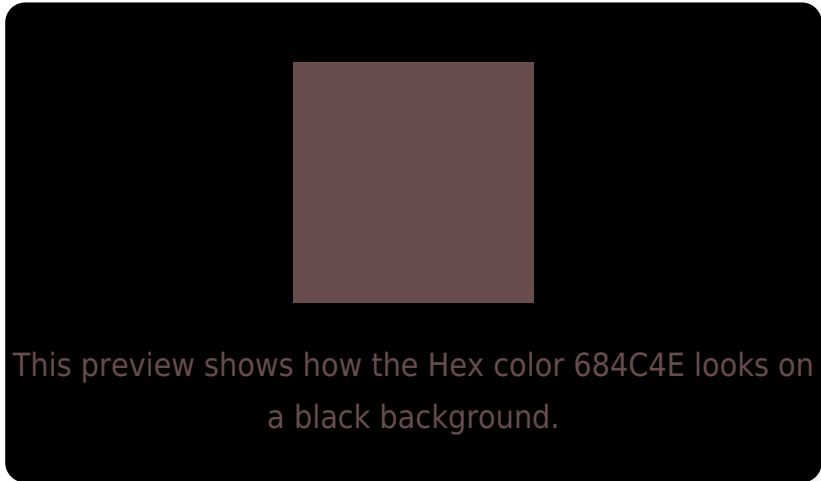
Large Text (above 18pt) WCAG AA ✓ Pass

Any Text WCAG AA ✓ Pass

Large Text (above 18pt) WCAG AAA ✓ Pass

Any Text WCAG AAA ✓ Pass

Black Background



Color Contrast Check

Large Text (above 18pt) WCAG AA × Fail

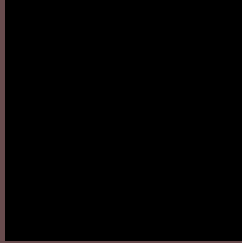
Any Text WCAG AA × Fail

Large Text (above 18pt) WCAG AAA × Fail

Any Text WCAG AAA × Fail

If you want to check with other color combinations, try the [Color Contrast Checker](#).

Hex 684C4E Background



This preview shows how black text looks on a background with the Hex color 684C4E.

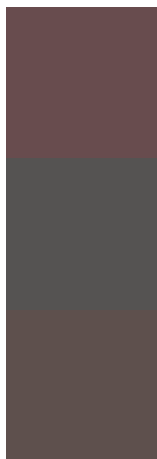


This preview shows how white text looks on a background with the Hex color 684C4E.

Color Blindness Simulation

Color vision deficiency is a very complex topic, and I could not describe the different causes any better than Wikipedia does, so if you want to learn more, you should check out their [article about color blindness](#).

Dichromacy



Original Color
684C4E

Protanopia
555352

Deuteranopia
5E504D



Tritanopia
684B51

Trichromacy



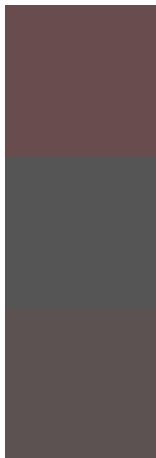
Original Color
684C4E

Protanomaly
5C5051

Deuteranomaly
624F4D

Tritanomaly
684B50

Monochromacy



Original Color
684C4E

Achromatopsia
555555

Achromatomaly
5C5252

CSS Examples

Text

The CSS property to change the color of the text to Hex 684C4E is called "color". The color property can be set on classes, ids or directly on the HTML element.

This example shows how text in the color #684C4E looks like.

```
.text, #text, p{  
    color:#684C4E  
}
```

If you want to add a text shadow in that color use the text-shadow property, you can generate a text shadow directly with our [CSS Text Shadow Generator](#).

Here you see how black text with a 4 pixel #684C4E colored shadow looks like.

```
.shadow{ text-shadow: 4px 4px 2px #684C4E
}
```

Border

The CSS property to change the border of an element to Hex 684C4E is called "border". The border property can be set on classes, ids or directly on the HTML element.

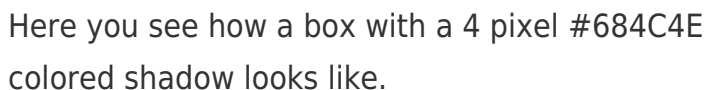
This example shows the color as border, it can be applied via the CSS property "border" or "border-color".

```
.border, #border, table{ border:4px solid
#684C4E }
```

If only the border color should be changed use the property `border-color`.

```
.border{ border-color:#684C4E }
```

If you want to add a box shadow in that color use:



Here you see how a box with a 4 pixel #684C4E colored shadow looks like.

```
.boxshadow{ -moz-box-shadow:4px 4px 4px  
4px #684C4E; -webkit-box-shadow:4px 4px  
4px 4px #684C4E; box-shadow:4px 4px 4px  
4px #684C4E }
```

Background

The CSS property to change the background color of an element to Hex 684C4E is called "background". The background property can be set on classes, ids or directly on the HTML element.

```
.background, #background, body{  
background:#684C4E }
```

If only the background color should be changed can be used:

```
.background{ background-color:#684C4E }
```

This example shows the color as background, it is applied via the CSS property "background".

To optimize and compress your CSS code, you can use our [online CSS compressor and optimizer](#) based on csstidy. If you want to create a linear or radial gradient as background or border, check our [CSS Gradient Generator](#).

Hey! You found this booklet interesting? Support Converting Colors with the new Membership Option!

The pro membership hides all ads, plus gives you double the colors in the color bucket, and more awesome pro features!

[Learn more, Memberships starting at \\$2.50/m!](#)

**Follow me
on Twitter!**

@ConvertingColor