

Converting Colors

Hex(69019E)

Have a look what the booklet for
Hex(69019E) contains.

Hex(69019E)	3
<i>Conversions</i>	4
<i>Details</i>	6
<i>Harmonies</i>	11
<i>Previews</i>	23
<i>Color Blindness Simulation</i>	26
<i>CSS Examples</i>	29

Color

Hex(69019E)

Conversions

Conversions Part 1

Format	Color
Hex	69019E
RGB	105, 1, 158
RGB Percent	41%, 0%, 62%
CMY	0.5882, 0.9961, 0.3804
CMYK	0.34, 0.99, 0.00, 0.38
HSL	280°, 99%, 31%
HSV	280°, 99%, 62%
XYZ	12.0081, 5.4936, 32.7752
YIQ	49.9940, 11.5870, 70.8750

Conversions

Conversions Part 2

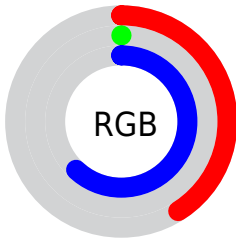
Format	Color
R_{YB}	105, 1, 158
Decimal	6881694
CIE _{Lab}	28.10, 60.82, -58.01
CIE _{LCh}	28, 84.044, 316.354
Yxy	5.4936, 0.2388, 0.1093
Android (android.graphics.Color)	4285071774 (0xFF69019E)
YUV	49.9940, 53.2470, 48.2403
Hunter-Lab	23.4384, 50.4330, -66.5016

Details

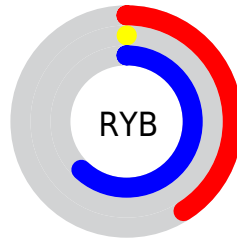
The Hex color **69019E** is a dark color, and the websafe version is hex **660099**. A complement of this color would be **369E01**, and the grayscale version is **313131**.

A 20% lighter version of the original color is **A246D6**, and **300069** is the 20% darker color. If you saturate the color by 10%, you get **69009E**, and if you desaturate by 10%, it is **6E119E**.

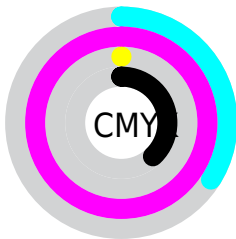
Distribution



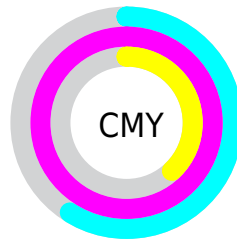
- Red (41%)
- Green (0%)
- Blue (62%)



- Red (41%)
- Yellow (0%)
- Blue (62%)



- Cyan (34%)
- Magenta (99%)
- Yellow (0%)
- Black (38%)



- Cyan (59%)
- Magenta (100%)
- Yellow (38%)

Brightness & Saturation Gradients

These gradients show how the Hex color 69019E changes by changing the brightness by 10 percent. The first figure shows a shift by +10% for each color and the second figure -10%.

Similar to the brightness gradients but the following saturation gradients show a change of the Hex color 69019E by changing the saturation by 10% instead.

69019E

69019E

FFFFFF

4D0083

A246D6

300069

BF61F3

130050

DC7CFF

000038

FA98FF

000222

FFB4FF

000007

FFD1FF

000000

FFEEFF

69019E

69019E

69009E

6E119E

74219E

79309E

7E409E

84509E

89609E

8E709E

947F9E

998F9E

Harmonies

Analogous

The Analogous color harmony consists of three colors that are next to each other on the color wheel.



0041C3



69019E



A00063

Triad

The Triadic color harmony groups three colors that are evenly spaced from another and form a triangle on the color wheel.



69019E



6A3400



005966

Complementary

The Complementary color scheme is a pair of colors which are on the opposite of each other on the color wheel.



69019E



369E01

Split Complementary

Split-complementary colors differ from the complementary color scheme. The scheme consists of three colors, the original color and two neighbors of the complement color.



005721



69019E



304A00

Square

The Square scheme is like the rectangle color scheme, but the four colors are evenly spaced on the color wheel.



69019E



930000



005300



0059A1

Rectangle

The Rectangle color scheme consists of four colors that form a rectangle on the color wheel.



69019E



AA0038



005300



00584F

Sweetspot

The Sweet Spot groups the original color and five complimentary colors.



69019E



BA91CF



01389E



5C4369



E8E8E8



696969

Same Dimension

The Same Dimension uses a secret algorithm to generate beautiful new colors.



69019E



8900CF



9E0186



4C474F



5F008F



0A000F

Inverse Universe

The Inverse Universe completely reimagines the original color for something new.



9E0136



CF0046



019E19



4F474A



8F0030



0F0005

Previews

White Background



This preview shows how the Hex color 69019E looks on a white background.

Color Contrast Check

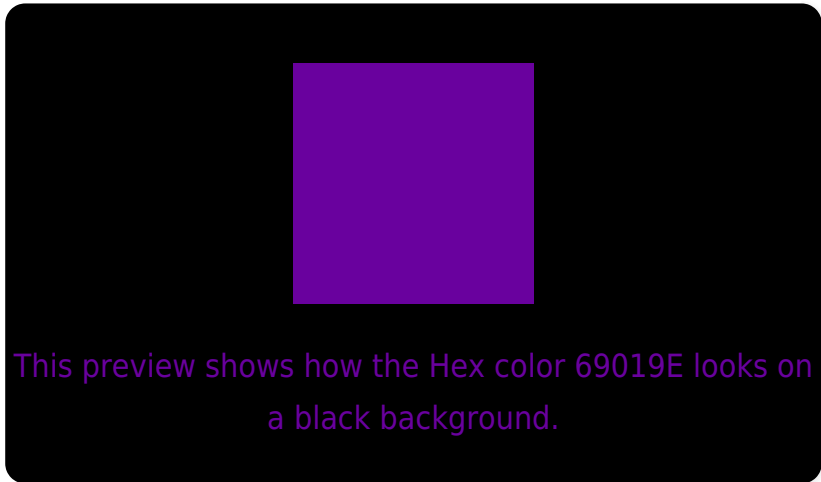
Large Text (above 18pt) WCAG AA ✓ Pass

Any Text WCAG AA ✓ Pass

Large Text (above 18pt) WCAG AAA ✓ Pass

Any Text WCAG AAA ✓ Pass

Black Background



Color Contrast Check

Large Text (above 18pt) WCAG AA × Fail

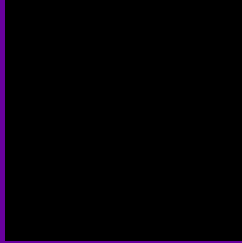
Any Text WCAG AA × Fail

Large Text (above 18pt) WCAG AAA × Fail

Any Text WCAG AAA × Fail

If you want to check with other color combinations, try the [Color Contrast Checker](#).

Hex 69019E Background



This preview shows how black text looks on a background with the Hex color 69019E.



This preview shows how white text looks on a background with the Hex color 69019E.

Color Blindness Simulation

Color vision deficiency is a very complex topic, and I could not describe the different causes any better than Wikipedia does, so if you want to learn more, you should check out their [article about color blindness](#).

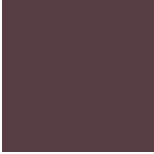
Dichromacy



Original Color
69019E

Protanopia
00438D

Deuteranopia
00477A



Tritanopia
583E42

Trichromacy



Original Color
69019E

Protanomaly
262B93

Deuteranomaly
262E87

Tritanomaly
5E2863

Monochromacy



Original Color
69019E

Achromatopsia
323232

Achromatomaly
462059

CSS Examples

Text

The CSS property to change the color of the text to Hex 69019E is called "color". The color property can be set on classes, ids or directly on the HTML element.

This example shows how text in the color #69019E looks like.

```
.text, #text, p{  
    color:#69019E  
}
```

If you want to add a text shadow in that color use the text-shadow property, you can generate a text shadow directly with our [CSS Text Shadow Generator](#).

Here you see how black text with a 4 pixel #69019E colored shadow looks like.

```
.shadow{ text-shadow: 4px 4px 2px #69019E
}
```

Border

The CSS property to change the border of an element to Hex 69019E is called "border". The border property can be set on classes, ids or directly on the HTML element.

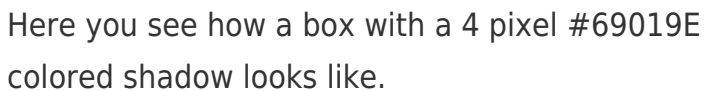
This example shows the color as border, it can be applied via the CSS property "border" or "border-color".

```
.border, #border, table{ border:4px solid
#69019E }
```

If only the border color should be changed use the property `border-color`.

```
.border{ border-color:#69019E }
```

If you want to add a box shadow in that color use:



Here you see how a box with a 4 pixel #69019E colored shadow looks like.

```
.boxshadow{ -moz-box-shadow:4px 4px 4px  
4px #69019E; -webkit-box-shadow:4px 4px  
4px 4px #69019E; box-shadow:4px 4px 4px  
4px #69019E }
```

Background

The CSS property to change the background color of an element to Hex 69019E is called "background". The background property can be set on classes, ids or directly on the HTML element.

```
.background, #background, body{  
background:#69019E }
```

If only the background color should be changed can be used:

```
.background{ background-color:#69019E }
```

This example shows the color as background, it is applied via the CSS property "background".

To optimize and compress your CSS code, you can use our [online CSS compressor and optimizer](#) based on csstidy. If you want to create a linear or radial gradient as background or border, check our [CSS Gradient Generator](#).

Hey! You found this booklet interesting? Support Converting Colors with the new Membership Option!

The pro membership hides all ads, plus gives you double the colors in the color bucket, and more awesome pro features!

[Learn more, Memberships starting at \\$2.50/m!](#)

**Follow me
on Twitter!**

@ConvertingColor