

Converting Colors

Hex(690B9E)

Have a look what the booklet for
Hex(690B9E) contains.

Hex(690B9E)	3
<i>Conversions</i>	4
<i>Details</i>	6
<i>Harmonies</i>	11
<i>Previews</i>	23
<i>Color Blindness Simulation</i>	26
<i>CSS Examples</i>	29

Color

Hex(690B9E)

Conversions

Conversions Part 1

Format	Color
Hex	690B9E
RGB	105, 11, 158
RGB Percent	41%, 4%, 62%
CMY	0.5882, 0.9569, 0.3804
CMYK	0.34, 0.93, 0.00, 0.38
HSL	278°, 87%, 33%
HSV	278°, 93%, 62%
XYZ	12.1169, 5.7112, 32.8115
YIQ	55.8640, 8.8370, 65.6450

Conversions

Conversions Part 2

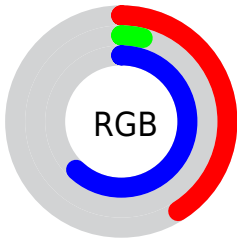
Format	Color
R_{YB}	105, 11, 158
Decimal	6884254
CIE _{Lab}	28.67, 59.09, -57.07
CIE _{LCh}	29, 82.150, 316.000
Yxy	5.7112, 0.2393, 0.1128
Android (android.graphics.Color)	4285074334 (0xFF690B9E)
YUV	55.8640, 50.3530, 43.0923
Hunter-Lab	23.8982, 48.6819, -64.6747

Details

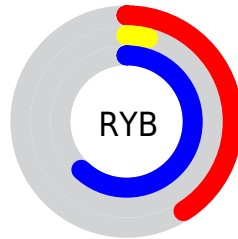
The Hex color **690B9E** is a dark color, and the websafe version is hex **660099**. A complement of this color would be **409E0B**, and the grayscale version is **373737**.

A 20% lighter version of the original color is **A14AD6**, and **300069** is the 20% darker color. If you saturate the color by 10%, you get **65009E**, and if you desaturate by 10%, it is **6F1B9E**.

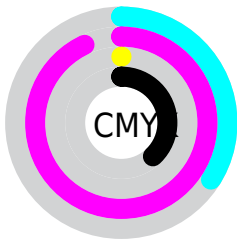
Distribution



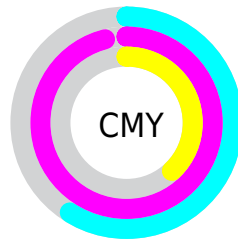
- Red (41%)
- Green (4%)
- Blue (62%)



- Red (41%)
- Yellow (4%)
- Blue (62%)



- Cyan (34%)
- Magenta (93%)
- Yellow (0%)
- Black (38%)



- Cyan (59%)
- Magenta (96%)
- Yellow (38%)

Brightness & Saturation Gradients

These gradients show how the Hex color 690B9E changes by changing the brightness by 10 percent. The first figure shows a shift by +10% for each color and the second figure -10%.

Similar to the brightness gradients but the following saturation gradients show a change of the Hex color 690B9E by changing the saturation by 10% instead.

690B9E

690B9E

FFFFFF

4D0083

A14AD6

300069

BE65F2

140050

DC80FF

000038

F99BFF

000222

FFB7FF

000007

FFD4FF

000000

FFF1FF

690B9E

690B9E

65009E

6F1B9E

742B9E

7A3A9E

804A9E

855A9E

8B6A9E

917A9E

97899E

9C999E

Harmonies

Analogous

The Analogous color harmony consists of three colors that are next to each other on the color wheel.



0042C2



690B9E



9F0064

Triad

The Triadic color harmony groups three colors that are evenly spaced from another and form a triangle on the color wheel.



690B9E



6B3600



005A65

Complementary

The Complementary color scheme is a pair of colors which are on the opposite of each other on the color wheel.



690B9E



409E0B

Split Complementary

Split-complementary colors differ from the complementary color scheme. The scheme consists of three colors, the original color and two neighbors of the complement color.



005822



690B9E



334B00

Square

The Square scheme is like the rectangle color scheme, but the four colors are evenly spaced on the color wheel.



690B9E



940000



005400



005AA0

Rectangle

The Rectangle color scheme consists of four colors that form a rectangle on the color wheel.



690B9E



A9003B



005400



00594F

Sweetspot

The Sweet Spot groups the original color and five complimentary colors.



690B9E



BA95CF



0B419E



5C4569



E8E8E8



696969

Same Dimension

The Same Dimension uses a secret algorithm to generate beautiful new colors.



690B9E



8400CF



9E0B8A



4C474F



5B008F



0A000F

Inverse Universe

The Inverse Universe completely reimagines the original color for something new.



9E0B40



CF004A



0B9E1F



4F474A



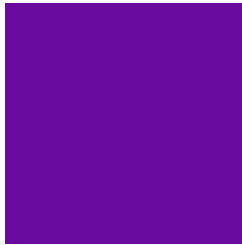
8F0033



0F0006

Previews

White Background



This preview shows how the Hex color 690B9E looks on a white background.

Color Contrast Check

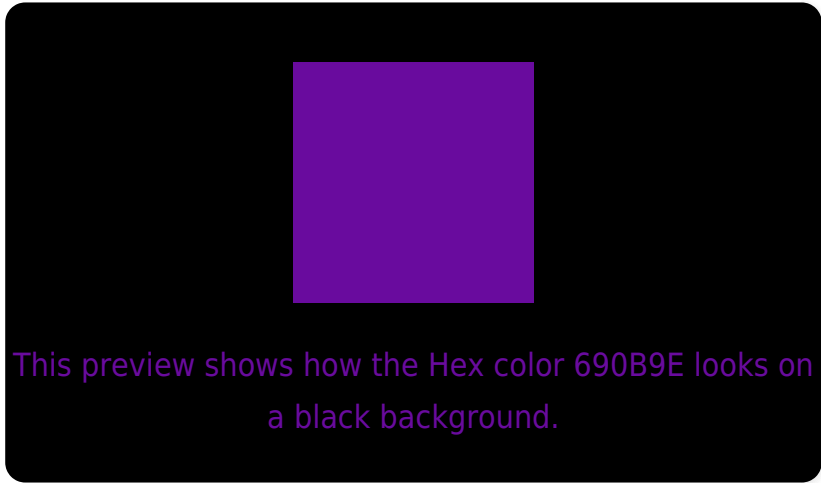
Large Text (above 18pt) WCAG AA ✓ Pass

Any Text WCAG AA ✓ Pass

Large Text (above 18pt) WCAG AAA ✓ Pass

Any Text WCAG AAA ✓ Pass

Black Background



Color Contrast Check

Large Text (above 18pt) WCAG AA × Fail

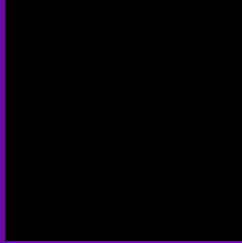
Any Text WCAG AA × Fail

Large Text (above 18pt) WCAG AAA × Fail

Any Text WCAG AAA × Fail

If you want to check with other color combinations, try the [Color Contrast Checker](#).

Hex 690B9E Background



This preview shows how black text looks on a background with the Hex color 690B9E.



This preview shows how white text looks on a background with the Hex color 690B9E.

Color Blindness Simulation

Color vision deficiency is a very complex topic, and I could not describe the different causes any better than Wikipedia does, so if you want to learn more, you should check out their [article about color blindness](#).

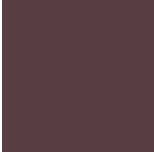
Dichromacy



Original Color
690B9E

Protanopia
00438D

Deuteranopia
00477A



Tritanopia
583E43

Trichromacy



Original Color
690B9E



Protanomaly
262F93



Deuteranomaly
263187



Tritanomaly
5E2B64

Monochromacy



Original Color
690B9E



Achromatopsia
383838



Achromatomaly
4A285D

CSS Examples

Text

The CSS property to change the color of the text to Hex 690B9E is called "color". The color property can be set on classes, ids or directly on the HTML element.

This example shows how text in the color #690B9E looks like.

```
.text, #text, p{  
    color:#690B9E  
}
```

If you want to add a text shadow in that color use the text-shadow property, you can generate a text shadow directly with our [CSS Text Shadow Generator](#).

Here you see how black text with a 4 pixel #690B9E colored shadow looks like.

```
.shadow{ text-shadow: 4px 4px 2px #690B9E
}
```

Border

The CSS property to change the border of an element to Hex 690B9E is called "border". The border property can be set on classes, ids or directly on the HTML element.

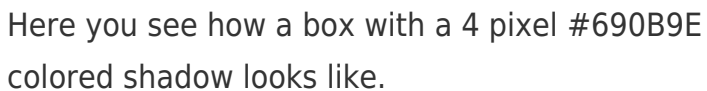
This example shows the color as border, it can be applied via the CSS property "border" or "border-color".

```
.border, #border, table{ border:4px solid
#690B9E }
```

If only the border color should be changed use the property `border-color`.

```
.border{ border-color:#690B9E }
```

If you want to add a box shadow in that color use:



Here you see how a box with a 4 pixel #690B9E colored shadow looks like.

```
.boxshadow{ -moz-box-shadow:4px 4px 4px  
4px #690B9E; -webkit-box-shadow:4px 4px  
4px 4px #690B9E; box-shadow:4px 4px 4px  
4px #690B9E }
```

Background

The CSS property to change the background color of an element to Hex 690B9E is called "background". The background property can be set on classes, ids or directly on the HTML element.

```
.background, #background, body{  
background:#690B9E }
```

If only the background color should be changed can be used:

```
.background{ background-color:#690B9E }
```

This example shows the color as background, it is applied via the CSS property "background".

To optimize and compress your CSS code, you can use our [online CSS compressor and optimizer](#) based on csstidy. If you want to create a linear or radial gradient as background or border, check our [CSS Gradient Generator](#).

Hey! You found this booklet interesting? Support Converting Colors with the new Membership Option!

The pro membership hides all ads, plus gives you double the colors in the color bucket, and more awesome pro features!

[Learn more, Memberships starting at \\$2.50/m!](#)

**Follow me
on Twitter!**

@ConvertingColor