

# Converting Colors

Hex(6A494F)

Have a look what the booklet for  
Hex(6A494F) contains.

<b>Hex(6A494F)</b> .....	3
<i><b>Conversions</b></i> .....	4
<i><b>Details</b></i> .....	6
<i><b>Harmonies</b></i> .....	11
<i><b>Previews</b></i> .....	23
<i><b>Color Blindness Simulation</b></i> .....	26
<i><b>CSS Examples</b></i> .....	29

**Color**

**Hex(6A494F)**

# Conversions

## Conversions Part 1

<b>Format</b>	<b>Color</b>
Hex	6A494F
RGB	106, 73, 79
RGB Percent	42%, 29%, 31%
CMY	0.5843, 0.7137, 0.6902
CMYK	0.00, 0.31, 0.25, 0.58
HSL	349°, 18%, 35%
HSV	349°, 31%, 42%
XYZ	9.7377, 8.3938, 8.5041
YIQ	83.5510, 17.7420, 8.8620

# Conversions

## Conversions Part 2

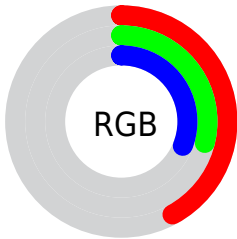
Format	Color
<a href="#">RYB</a>	<a href="#">106, 73, 79</a>
Decimal	<a href="#">6965583</a>
CIELab	<a href="#">34.79, 15.04, 2.08</a>
CIELCh	<a href="#">35, 15.182, 7.867</a>
Yxy	<a href="#">8.3938, 0.3656, 0.3151</a>
Android (android.graphics.Color)	<a href="#">4285155663 (0xFF6A494F)</a>
YUV	<a href="#">83.5510, -2.2436, 19.6878</a>
Hunter-Lab	<a href="#">28.9720, 9.2940, 2.8772</a>

# Details

The Hex color **6A494F** is a dark color, and the websafe version is hex **663333**. A complement of this color would be **496A64**, and the grayscale version is **545454**.

A 20% lighter version of the original color is **9E7A80**, and **3A1D23** is the 20% darker color. If you saturate the color by 10%, you get **6A3E46**, and if you desaturate by 10%, it is **6A5458**.

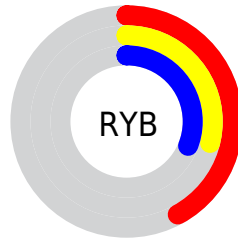
# Distribution



Red (42%)

Green (29%)

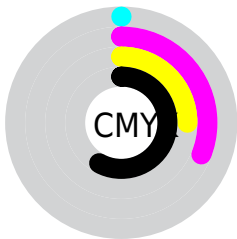
Blue (31%)



Red (42%)

Yellow (29%)

Blue (31%)

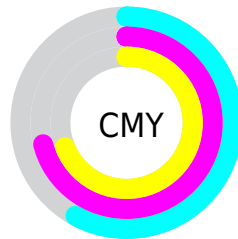


Cyan (0%)

Magenta (31%)

Yellow (25%)

Black (58%)



Cyan (58%)

Magenta (71%)

Yellow (69%)

# Brightness & Saturation Gradients

These gradients show how the Hex color 6A494F changes by changing the brightness by 10 percent. The first figure shows a shift by +10% for each color and the second figure -10%.

Similar to the brightness gradients but the following saturation gradients show a change of the Hex color 6A494F by changing the saturation by 10% instead.



6A494F

6A494F

FFFFFF

513238

9E7A80

3A1D23

B9949A

24060D

D5AEB5

000000

F2CAD0

FFE6ED

6A494F

6A494F

6A3E46

6A5458

6A343E

6A5E60

6A2935

6A6969

6A1F2C

6A7372

6A1424

6A7E7A

6A091B

6A8983

6A0013

6A938C

6A9E94

6AA89D

# Harmonies

## Analogous

The Analogous color harmony consists of three colors that are next to each other on the color wheel.



644A5B



6A494F



694B44

# Triad

The Triadic color harmony groups three colors that are evenly spaced from another and form a triangle on the color wheel.



6A494F



4A563E



375668

# Complementary

The Complementary color scheme is a pair of colors which are on the opposite of each other on the color wheel.



6A494F



496A64

# Split Complementary

Split-complementary colors differ from the complementary color scheme. The scheme consists of three colors, the original color and two neighbors of the complement color.



2E5860



6A494F



3C5848

# Square

The Square scheme is like the rectangle color scheme, but the four colors are evenly spaced on the color wheel.



6A494F



57523A



315955



47526A

# Rectangle

The Rectangle color scheme consists of four colors that form a rectangle on the color wheel.



6A494F



654D3E



315955



335666



# Sweetspot

The Sweet Spot groups the original color and five complimentary colors.



6A494F



8A7D80



64496A



453D3F



C4C4C4



454545



# Same Dimension

The Same Dimension uses a secret algorithm to generate beautiful new colors.



6A494F



8A5760



6A5349



363031



750015



F5002D



# Inverse Universe

The Inverse Universe completely reimagines the original color for something new.



6A494F



8A5760



49606A



363031



750015

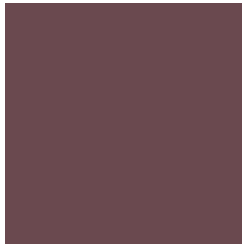


F5002D



# Previews

## White Background



This preview shows how the Hex color 6A494F looks on a white background.

## Color Contrast Check

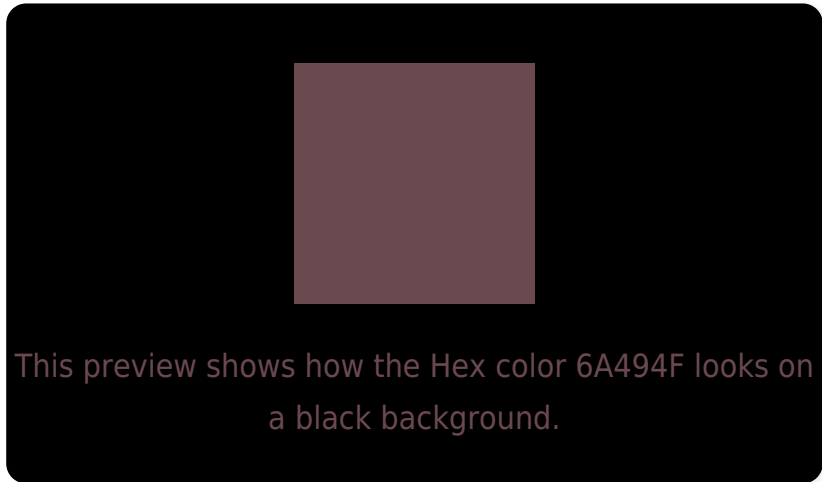
Large Text (above 18pt) WCAG AA ✓ Pass

Any Text WCAG AA ✓ Pass

Large Text (above 18pt) WCAG AAA ✓ Pass

Any Text WCAG AAA ✓ Pass

# Black Background



## Color Contrast Check

Large Text (above 18pt) WCAG AA × Fail

Any Text WCAG AA × Fail

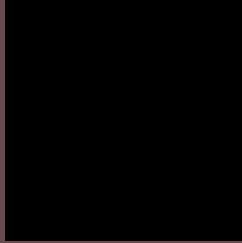
Large Text (above 18pt) WCAG AAA × Fail

Any Text WCAG AAA × Fail

If you want to check with other color combinations, try the [Color Contrast Checker](#).



## Hex 6A494F Background



This preview shows how black text looks on a background with the Hex color 6A494F.



This preview shows how white text looks on a background with the Hex color 6A494F.

# Color Blindness Simulation

Color vision deficiency is a very complex topic, and I could not describe the different causes any better than Wikipedia does, so if you want to learn more, you should check out their [article about color blindness](#).


## Dichromacy



**Original Color**  
6A494F

**Protanopia**  
535254

**Deuteranopia**  
5C4F4E



**Tritanopia**  
6A494F

# Trichromacy



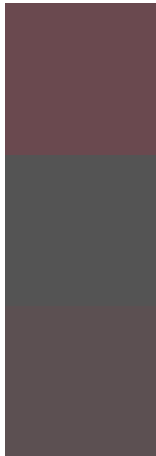
**Original Color**  
6A494F

**Protanomaly**  
5B4F52

**Deuteranomaly**  
614D4E

**Tritanomaly**  
6A494F

# Monochromacy



**Original Color**  
6A494F

**Achromatopsia**  
545454

**Achromatomaly**  
5C5052

# CSS Examples

## Text

The CSS property to change the color of the text to Hex 6A494F is called "color". The color property can be set on classes, ids or directly on the HTML element.

This example shows how text in the color #6A494F looks like.

```
.text, #text, p{  
    color:#6A494F  
}
```

If you want to add a text shadow in that color use the text-shadow property, you can generate a text shadow directly with our [CSS Text Shadow Generator](#).

Here you see how black text with a 4 pixel #6A494F colored shadow looks like.

```
.shadow{ text-shadow: 4px 4px 2px #6A494F
}
```

## Border

The CSS property to change the border of an element to Hex 6A494F is called "border". The border property can be set on classes, ids or directly on the HTML element.

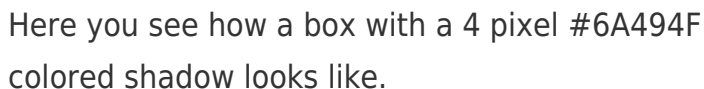
This example shows the color as border, it can be applied via the CSS property "border" or "border-color".

```
.border, #border, table{ border:4px solid
#6A494F }
```

If only the border color should be changed use the property `border-color`.

```
.border{ border-color:#6A494F }
```

If you want to add a box shadow in that color use:



Here you see how a box with a 4 pixel #6A494F colored shadow looks like.

```
.boxshadow{ -moz-box-shadow:4px 4px 4px  
4px #6A494F; -webkit-box-shadow:4px 4px  
4px 4px #6A494F; box-shadow:4px 4px 4px  
4px #6A494F }
```

# Background

The CSS property to change the background color of an element to Hex 6A494F is called "background". The background property can be set on classes, ids or directly on the HTML element.

```
.background, #background, body{  
background:#6A494F }
```

If only the background color should be changed can be used:

```
.background{ background-color:#6A494F }
```

This example shows the color as background, it is applied via the CSS property "background".

To optimize and compress your CSS code, you can use our [online CSS compressor and optimizer](#) based on csstidy. If you want to create a linear or radial gradient as background or border, check our [CSS Gradient Generator](#).



Hey! You found this booklet interesting? Support Converting Colors with the new Membership Option!

The pro membership hides all ads, plus gives you double the colors in the color bucket, and more awesome pro features!

**[Learn more, Memberships starting at \\$2.50/m!](#)**

**Follow me  
on Twitter!**

@ConvertingColor