

Converting Colors

Hex(6A4C52)

Have a look what the booklet for
Hex(6A4C52) contains.

Hex(6A4C52)	3
<i>Conversions</i>	4
<i>Details</i>	6
<i>Harmonies</i>	11
<i>Previews</i>	23
<i>Color Blindness Simulation</i>	26
<i>CSS Examples</i>	29

Color

Hex(6A4C52)

Conversions

Conversions Part 1

Format	Color
Hex	6A4C52
RGB	106, 76, 82
RGB Percent	42%, 30%, 32%
CMY	0.5843, 0.7020, 0.6784
CMYK	0.00, 0.28, 0.23, 0.58
HSL	348°, 16%, 36%
HSV	348°, 28%, 42%
XYZ	10.0513, 8.8423, 9.1596
YIQ	85.6540, 15.9540, 8.2260

Conversions

Conversions Part 2

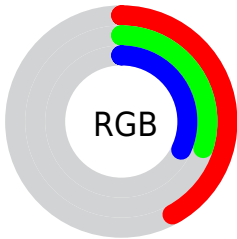
Format	Color
RYB	106, 76, 82
Decimal	6966354
CIELab	35.68, 13.69, 1.47
CIElCh	36, 13.771, 6.120
Yxy	8.8423, 0.3583, 0.3152
Android (android.graphics.Color)	4285156434 (0xFF6A4C52)
YUV	85.6540, -1.8014, 17.8434
Hunter-Lab	29.7359, 8.2984, 2.5519

Details

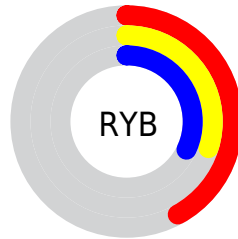
The Hex color **6A4C52** is a dark color, and the websafe version is hex **663333**. A complement of this color would be **4C6A64**, and the grayscale version is **565656**.

A 20% lighter version of the original color is **9E7D83**, and **3A1F25** is the 20% darker color. If you saturate the color by 10%, you get **6A414A**, and if you desaturate by 10%, it is **6A575A**.

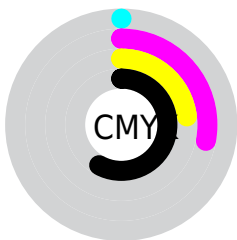
Distribution



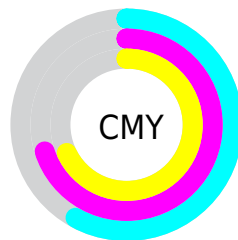
- Red (42%)
- Green (30%)
- Blue (32%)



- Red (42%)
- Yellow (30%)
- Blue (32%)



- Cyan (0%)
- Magenta (28%)
- Yellow (23%)
- Black (58%)



- Cyan (58%)
- Magenta (70%)
- Yellow (68%)

Brightness & Saturation Gradients

These gradients show how the Hex color 6A4C52 changes by changing the brightness by 10 percent. The first figure shows a shift by +10% for each color and the second figure -10%.

Similar to the brightness gradients but the following saturation gradients show a change of the Hex color 6A4C52 by changing the saturation by 10% instead.



6A4C52



6A4C52

FFFFFF



51353B



9E7D83



3A1F25



B9979D



240A10



D5B2B8



000000



F1CDD4



FFFAF0



6A4C52



6A4C52



6A414A



6A575A



6A3741



6A6163

 6A2C39

 6A6C6B

 6A2230

 6A7674

 6A1728

 6A817C

 6A0C1F

 6A8C85

 6A0217

 6A968D

 6A0015

 6AA196

 6AAB9E

Harmonies

Analogous

The Analogous color harmony consists of three colors that are next to each other on the color wheel.



644D5D



6A4C52



6A4D47

Triad

The Triadic color harmony groups three colors that are evenly spaced from another and form a triangle on the color wheel.



6A4C52



4E5742



3C5768

Complementary

The Complementary color scheme is a pair of colors which are on the opposite of each other on the color wheel.



6A4C52



4C6A64

Split Complementary

Split-complementary colors differ from the complementary color scheme. The scheme consists of three colors, the original color and two neighbors of the complement color.



355A60



6A4C52



41594B

Square

The Square scheme is like the rectangle color scheme, but the four colors are evenly spaced on the color wheel.



6A4C52



5A543E



375A56



4A546A

Rectangle

The Rectangle color scheme consists of four colors that form a rectangle on the color wheel.



6A4C52



664F42



375A56



395866

Sweetspot

The Sweet Spot groups the original color and five complimentary colors.



6A4C52



8A7F81



644C6A



453E3F



C4C4C4



454545

Same Dimension

The Same Dimension uses a secret algorithm to generate beautiful new colors.



6A4C52



8A5B64



6A554C



363031



750017



F50031

Inverse Universe

The Inverse Universe completely reimagines the original color for something new.



6A4C52



8A5B64



4C616A



363031



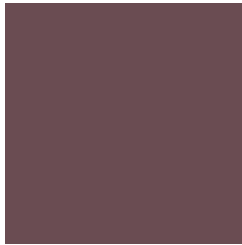
750017



F50031

Previews

White Background



This preview shows how the Hex color 6A4C52 looks on a white background.

Color Contrast Check

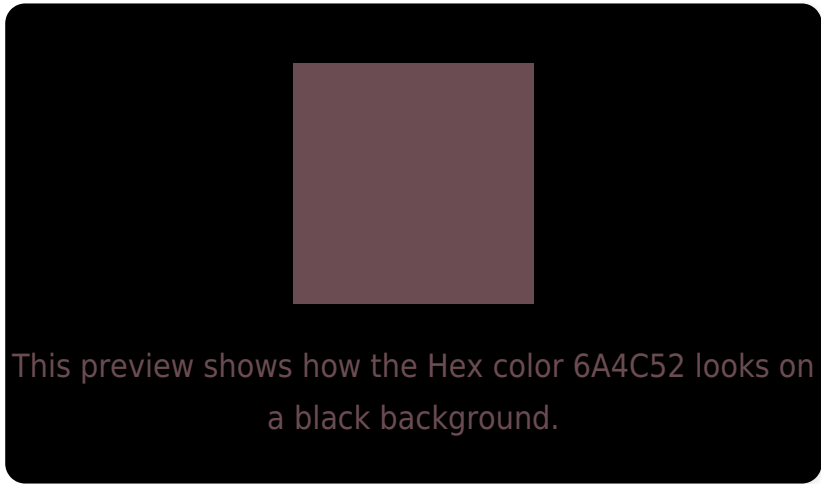
Large Text (above 18pt) WCAG AA ✓ Pass

Any Text WCAG AA ✓ Pass

Large Text (above 18pt) WCAG AAA ✓ Pass

Any Text WCAG AAA ✓ Pass

Black Background



Color Contrast Check

Large Text (above 18pt) WCAG AA × Fail

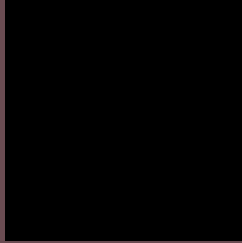
Any Text WCAG AA × Fail

Large Text (above 18pt) WCAG AAA × Fail

Any Text WCAG AAA × Fail

If you want to check with other color combinations, try the [Color Contrast Checker](#).

Hex 6A4C52 Background



This preview shows how black text looks on a background with the Hex color 6A4C52.

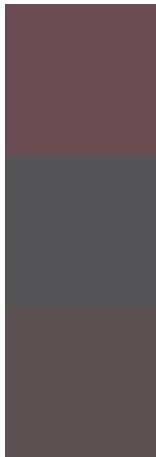


This preview shows how white text looks on a background with the Hex color 6A4C52.

Color Blindness Simulation

Color vision deficiency is a very complex topic, and I could not describe the different causes any better than Wikipedia does, so if you want to learn more, you should check out their [article about color blindness](#).

Dichromacy



Original Color
6A4C52

Protanopia
555456

Deuteranopia
5D5151



Tritanopia
6A4C52

Trichromacy



Original Color
6A4C52

Protanomaly
5D5155

Deuteranomaly
624F51

Tritanomaly
6A4C52

Monochromacy



Original Color
6A4C52

Achromatopsia
565656

Achromatomaly
5D5255

CSS Examples

Text

The CSS property to change the color of the text to Hex 6A4C52 is called "color". The color property can be set on classes, ids or directly on the HTML element.

This example shows how text in the color #6A4C52 looks like.

```
.text, #text, p{  
    color:#6A4C52  
}
```

If you want to add a text shadow in that color use the text-shadow property, you can generate a text shadow directly with our [CSS Text Shadow Generator](#).

Here you see how black text with a 4 pixel #6A4C52 colored shadow looks like.

```
.shadow{ text-shadow: 4px 4px 2px #6A4C52
}
```

Border

The CSS property to change the border of an element to Hex 6A4C52 is called "border". The border property can be set on classes, ids or directly on the HTML element.

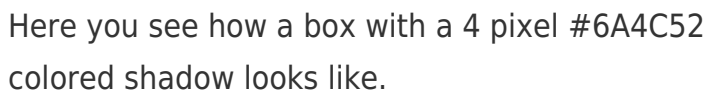
This example shows the color as border, it can be applied via the CSS property "border" or "border-color".

```
.border, #border, table{ border:4px solid
#6A4C52 }
```

If only the border color should be changed use the property `border-color`.

```
.border{ border-color:#6A4C52 }
```

If you want to add a box shadow in that color use:



Here you see how a box with a 4 pixel #6A4C52 colored shadow looks like.

```
.boxshadow{ -moz-box-shadow:4px 4px 4px  
4px #6A4C52; -webkit-box-shadow:4px 4px  
4px 4px #6A4C52; box-shadow:4px 4px 4px  
4px #6A4C52 }
```

Background

The CSS property to change the background color of an element to Hex 6A4C52 is called "background". The background property can be set on classes, ids or directly on the HTML element.

```
.background, #background, body{  
background:#6A4C52 }
```

If only the background color should be changed can be used:

```
.background{ background-color:#6A4C52 }
```

This example shows the color as background, it is applied via the CSS property "background".

To optimize and compress your CSS code, you can use our [online CSS compressor and optimizer](#) based on csstidy. If you want to create a linear or radial gradient as background or border, check our [CSS Gradient Generator](#).

Hey! You found this booklet interesting? Support Converting Colors with the new Membership Option!

The pro membership hides all ads, plus gives you double the colors in the color bucket, and more awesome pro features!

[Learn more, Memberships starting at \\$2.50/m!](#)

**Follow me
on Twitter!**

@ConvertingColor