

Converting Colors

Hex(6C5849)

Have a look what the booklet for
Hex(6C5849) contains.

Hex(6C5849)	3
<i>Conversions</i>	4
<i>Details</i>	6
<i>Harmonies</i>	11
<i>Previews</i>	23
<i>Color Blindness Simulation</i>	26
<i>CSS Examples</i>	29

Color

Hex(6C5849)

Conversions

Conversions Part 1

Format	Color
Hex	6C5849
RGB	108, 88, 73
RGB Percent	42%, 35%, 29%
CMY	0.5765, 0.6549, 0.7137
CMYK	0.00, 0.19, 0.32, 0.58
HSL	26°, 19%, 35%
HSV	26°, 32%, 42%
XYZ	10.8767, 10.6486, 7.7855
YIQ	92.2700, 16.7350, -0.4250

Conversions

Conversions Part 2

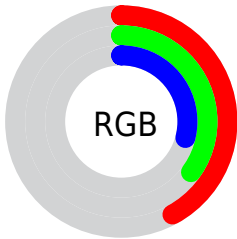
Format	Color
R _Y B	108, 99, 73
Decimal	7100489
CIE Lab	38.98, 5.76, 11.79
CIE LCh	39, 13.116, 63.971
Yxy	10.6486, 0.3711, 0.3633
Android (android.graphics.Color)	4285290569 (0xFF6C5849)
YUV	92.2700, -9.5001, 13.7952
Hunter-Lab	32.6322, 2.3895, 8.6971

Details

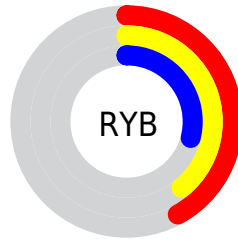
The Hex color **6C5849** is a dark color, and the websafe version is hex **666666**. A complement of this color would be **495D6C**, and the grayscale version is **5C5C5C**.

A 20% lighter version of the original color is **A08A7A**, and **3C2B1D** is the 20% darker color. If you saturate the color by 10%, you get **6C523E**, and if you desaturate by 10%, it is **6C5E54**.

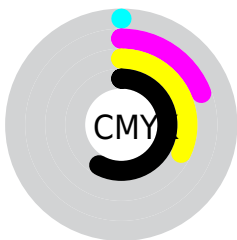
Distribution



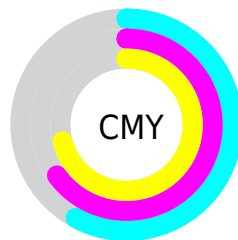
- Red (42%)
- Green (35%)
- Blue (29%)



- Red (42%)
- Yellow (39%)
- Blue (29%)



- Cyan (0%)
- Magenta (19%)
- Yellow (32%)
- Black (58%)



- Cyan (58%)
- Magenta (65%)
- Yellow (71%)

Brightness & Saturation Gradients

These gradients show how the Hex color 6C5849 changes by changing the brightness by 10 percent. The first figure shows a shift by +10% for each color and the second figure -10%.

Similar to the brightness gradients but the following saturation gradients show a change of the Hex color 6C5849 by changing the saturation by 10% instead.



6C5849



6C5849

FFFFFF



534132



A08A7A



3C2B1D



BBA493



261604



D7BFAE



040000



F4DBC9



000000



FFF8E5



6C5849



6C5849



6C523E



6C5E54



6C4C33



6C645F

■ 6C4529

■ 6C6B69

■ 6C3F1E

■ 6C7174

■ 6C3913

■ 6C777F

■ 6C3308

■ 6C7D8A

■ 6C2E00

■ 6C8395

■ 6C899F

■ 6C90AA

Harmonies

Analogous

The Analogous color harmony consists of three colors that are next to each other on the color wheel.



715550



6C5849



635C47

Triad

The Triadic color harmony groups three colors that are evenly spaced from another and form a triangle on the color wheel.



6C5849



41625D



5F596D

Complementary

The Complementary color scheme is a pair of colors which are on the opposite of each other on the color wheel.



6C5849



495D6C

Split Complementary

Split-complementary colors differ from the complementary color scheme. The scheme consists of three colors, the original color and two neighbors of the complement color.



515C71



6C5849



3E6167

Square

The Square scheme is like the rectangle color scheme, but the four colors are evenly spaced on the color wheel.



6C5849



4B6152



455F6F



6B5665

Rectangle

The Rectangle color scheme consists of four colors that form a rectangle on the color wheel.



6C5849



5B5E48



455F6F



5B5A6F

Sweetspot

The Sweet Spot groups the original color and five complimentary colors.



6C5849



8C847E



6C495D



47433F



C7C7C7



474747

Same Dimension

The Same Dimension uses a secret algorithm to generate beautiful new colors.



6C5849



8C6D56



6C6949



363230



753200



F56900

Inverse Universe

The Inverse Universe completely reimagines the original color for something new.



495D6C



56758C



494C6C



303336



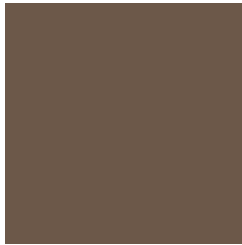
004375



008CF5

Previews

White Background



This preview shows how the Hex color 6C5849 looks on a white background.

Color Contrast Check

Large Text (above 18pt) WCAG AA ✓ Pass

Any Text WCAG AA ✓ Pass

Large Text (above 18pt) WCAG AAA ✓ Pass

Any Text WCAG AAA × Fail

Black Background



Color Contrast Check

Large Text (above 18pt) WCAG AA ✓ Pass

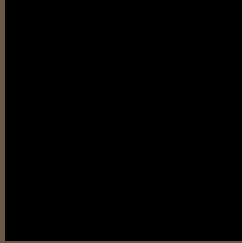
Any Text WCAG AA × Fail

Large Text (above 18pt) WCAG AAA × Fail

Any Text WCAG AAA × Fail

If you want to check with other color combinations, try the [Color Contrast Checker](#).

Hex 6C5849 Background



This preview shows how black text looks on a background with the Hex color 6C5849.

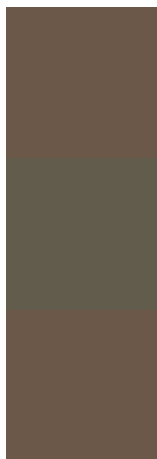


This preview shows how white text looks on a background with the Hex color 6C5849.

Color Blindness Simulation

Color vision deficiency is a very complex topic, and I could not describe the different causes any better than Wikipedia does, so if you want to learn more, you should check out their [article about color blindness](#).

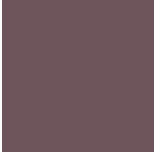
Dichromacy



Original Color
6C5849

Protanopia
615C4B

Deuteranopia
6B5849



Tritanopia
6E555C

Trichromacy



Original Color
6C5849

Protanomaly
655B4A

Deuteranomaly
6B5849

Tritanomaly
6D5655

Monochromacy



Original Color
6C5849

Achromatopsia
5C5C5C

Achromatomaly
625B55

CSS Examples

Text

The CSS property to change the color of the text to Hex 6C5849 is called "color". The color property can be set on classes, ids or directly on the HTML element.

This example shows how text in the color #6C5849 looks like.

```
.text, #text, p{  
    color:#6C5849  
}
```

If you want to add a text shadow in that color use the text-shadow property, you can generate a text shadow directly with our [CSS Text Shadow Generator](#).

Here you see how black text with a 4 pixel #6C5849 colored shadow looks like.

```
.shadow{ text-shadow: 4px 4px 2px #6C5849
}
```

Border

The CSS property to change the border of an element to Hex 6C5849 is called "border". The border property can be set on classes, ids or directly on the HTML element.

This example shows the color as border, it can be applied via the CSS property "border" or "border-color".

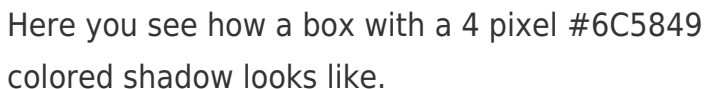
```
.border, #border, table{ border:4px solid
#6C5849 }
```

If only the border color should be changed use the property `border-color`.

```
.border{ border-color:#6C5849 }
```

If you want to add a box shadow in that color use:

Here you see how a box with a 4 pixel #6C5849 colored shadow looks like.



```
.boxshadow{ -moz-box-shadow:4px 4px 4px  
4px #6C5849; -webkit-box-shadow:4px 4px  
4px 4px #6C5849; box-shadow:4px 4px 4px  
4px #6C5849 }
```

Background

The CSS property to change the background color of an element to Hex 6C5849 is called "background". The background property can be set on classes, ids or directly on the HTML element.

```
.background, #background, body{  
background:#6C5849 }
```

If only the background color should be changed can be used:

```
.background{ background-color:#6C5849 }
```

This example shows the color as background, it is applied via the CSS property "background".

To optimize and compress your CSS code, you can use our [online CSS compressor and optimizer](#) based on csstidy. If you want to create a linear or radial gradient as background or border, check our [CSS Gradient Generator](#).

Hey! You found this booklet interesting? Support Converting Colors with the new Membership Option!

The pro membership hides all ads, plus gives you double the colors in the color bucket, and more awesome pro features!

[Learn more, Memberships starting at \\$2.50/m!](#)

**Follow me
on Twitter!**

@ConvertingColor