

# Converting Colors

Hex(6E5558)

Have a look what the booklet for  
Hex(6E5558) contains.

<b>Hex(6E5558)</b> .....	3
<b><i>Conversions</i></b> .....	4
<b><i>Details</i></b> .....	6
<b><i>Harmonies</i></b> .....	11
<b><i>Previews</i></b> .....	23
<b><i>Color Blindness Simulation</i></b> .....	26
<b><i>CSS Examples</i></b> .....	29

# Color

**Hex(6E5558)**

# Conversions

## Conversions Part 1

<b>Format</b>	<b>Color</b>
Hex	6E5558
RGB	110, 85, 88
RGB Percent	43%, 33%, 35%
CMY	0.5686, 0.6667, 0.6549
CMYK	0.00, 0.23, 0.20, 0.57
HSL	353°, 13%, 38%
HSV	353°, 23%, 43%
XYZ	11.4404, 10.5166, 10.6594
YIQ	92.8170, 13.9370, 6.2330

# Conversions

## Conversions Part 2

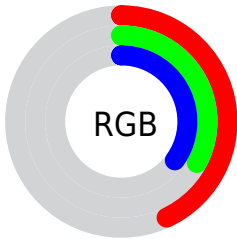
Format	Color
<b>RYB</b>	110, 85, 88
Decimal	7230808
CIELab	38.75, 10.86, 2.23
CIELCh	39, 11.088, 11.585
Yxy	10.5166, 0.3508, 0.3224
Android (android.graphics.Color)	4285420888 (0xFF6E5558)
YUV	92.8170, -2.3748, 15.0695
Hunter-Lab	32.4293, 6.2198, 3.2120

# Details

The Hex color **6E5558** is a dark color, and the websafe version is hex **666666**. A complement of this color would be **556E6B**, and the grayscale version is **5D5D5D**.

A 20% lighter version of the original color is **A2878A**, and **3E282B** is the 20% darker color. If you saturate the color by 10%, you get **6E4A4E**, and if you desaturate by 10%, it is **6E6062**.

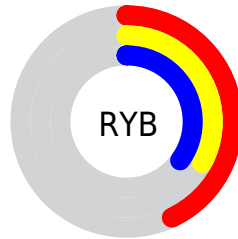
# Distribution



Red (43%)

Green (33%)

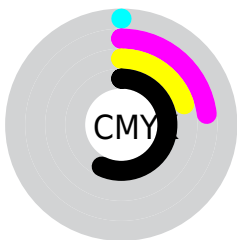
Blue (35%)



Red (43%)

Yellow (33%)

Blue (35%)

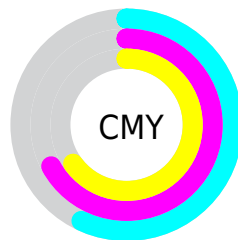


Cyan (0%)

Magenta (23%)

Yellow (20%)

Black (57%)



Cyan (57%)

Magenta (67%)

Yellow (65%)

# Brightness & Saturation Gradients

These gradients show how the Hex color 6E5558 changes by changing the brightness by 10 percent. The first figure shows a shift by +10% for each color and the second figure -10%.

Similar to the brightness gradients but the following saturation gradients show a change of the Hex color 6E5558 by changing the saturation by 10% instead.





6E5558



6E5558

FFFFFF



553E41



A2878A



3E282B



BDA1A4



271316



D9BCBF



0E0000



F6D8DB



000000



FFF4F7



6E5558



6E5558



6E4A4E



6E6062



6E3F45



6E6B6B

 6E343B

 6E7675

 6E2931

 6E817F

 6E1E28

 6E8C88

 6E131E

 6E9792

 6E0814

 6EA29C

 6E000D

 6EADA5

 6EB8AF

# Harmonies

## Analogous

The Analogous color harmony consists of three colors that are next to each other on the color wheel.



6A5661



6E5558



6D5650

# Triad

The Triadic color harmony groups three colors that are evenly spaced from another and form a triangle on the color wheel.



6E5558



545E4E



4B5E6C

# Complementary

The Complementary color scheme is a pair of colors which are on the opposite of each other on the color wheel.



6E5558



556E6B

# Split Complementary

Split-complementary colors differ from the complementary color scheme. The scheme consists of three colors, the original color and two neighbors of the complement color.



446067



6E5558



4B6055

# Square

The Square scheme is like the rectangle color scheme, but the four colors are evenly spaced on the color wheel.



6E5558



5F5C4A



44615F



565B6D

# Rectangle

The Rectangle color scheme consists of four colors that form a rectangle on the color wheel.



6E5558



6A584C



44615F



485E6B



# Sweetspot

The Sweet Spot groups the original color and five complimentary colors.



6E5558



8F8586



6B556E



474242



C7C7C7



474747



# Same Dimension

The Same Dimension uses a secret algorithm to generate beautiful new colors.



6E5558



8F686D



6E5E55



383233



78000E



F7001E



# Inverse Universe

The Inverse Universe completely reimagines the original color for something new.



6E5558



8F686D



55656E



383233



78000E

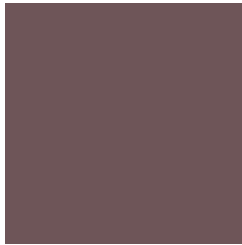


F7001E



# Previews

## White Background



This preview shows how the Hex color 6E5558 looks on a white background.

## Color Contrast Check

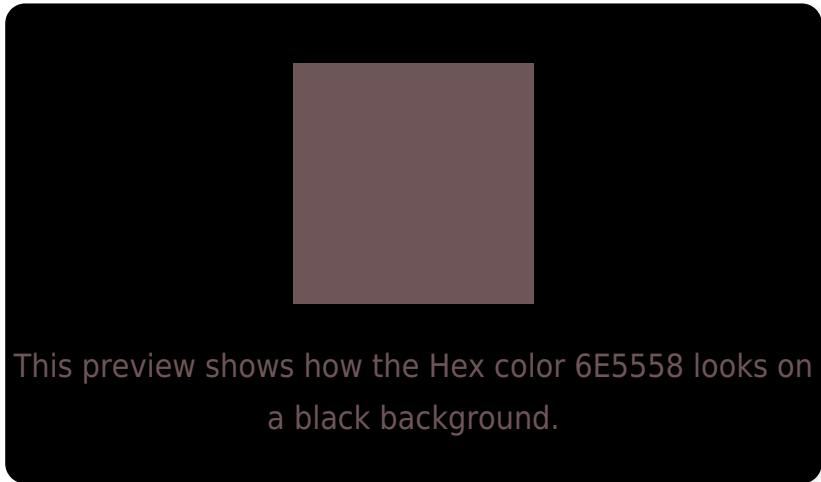
Large Text (above 18pt) WCAG AA ✓ Pass

Any Text WCAG AA ✓ Pass

Large Text (above 18pt) WCAG AAA ✓ Pass

Any Text WCAG AAA × Fail

# Black Background



## Color Contrast Check

Large Text (above 18pt) WCAG AA ✓ Pass

Any Text WCAG AA × Fail

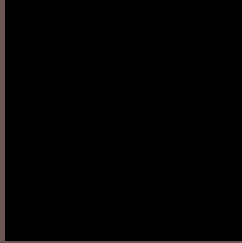
Large Text (above 18pt) WCAG AAA × Fail

Any Text WCAG AAA × Fail

If you want to check with other color combinations, try the [Color Contrast Checker](#).



## Hex 6E5558 Background



This preview shows how black text looks on a background with the Hex color 6E5558.



This preview shows how white text looks on a background with the Hex color 6E5558.

# Color Blindness Simulation

Color vision deficiency is a very complex topic, and I could not describe the different causes any better than Wikipedia does, so if you want to learn more, you should check out their [article about color blindness](#).

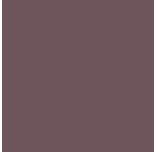
## Dichromacy



**Original Color**  
6E5558

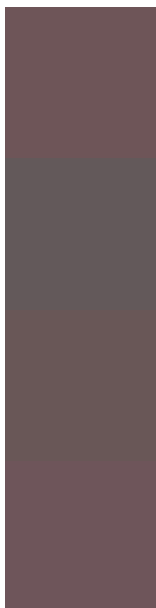
**Protanopia**  
5D5B5B

**Deuteranopia**  
665857



**Tritanopia**  
6E555B

# Trichromacy



**Original Color**

6E5558

**Protanomaly**

63595A

**Deuteranomaly**

695757

**Tritanomaly**

6E555A

# Monochromacy



**Original Color**

6E5558

**Achromatopsia**

5D5D5D

**Achromatomaly**

635A5B

# CSS Examples

## Text

The CSS property to change the color of the text to Hex 6E5558 is called "color". The color property can be set on classes, ids or directly on the HTML element.

This example shows how text in the color #6E5558 looks like.

```
.text, #text, p{  
    color:#6E5558  
}
```

If you want to add a text shadow in that color use the text-shadow property, you can generate a text shadow directly with our [CSS Text Shadow Generator](#).

Here you see how black text with a 4 pixel #6E5558 colored shadow looks like.

```
.shadow{ text-shadow: 4px 4px 2px #6E5558  
}
```

## Border

The CSS property to change the border of an element to Hex 6E5558 is called "border". The border property can be set on classes, ids or directly on the HTML element.

This example shows the color as border, it can be applied via the CSS property "border" or "border-color".

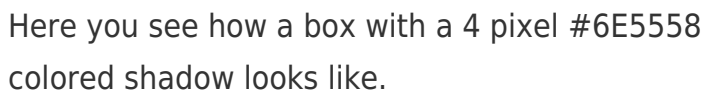
```
.border, #border, table{ border:4px solid  
#6E5558 }
```

If only the border color should be changed use the property `border-color`.

```
.border{ border-color:#6E5558 }
```

If you want to add a box shadow in that color use:

Here you see how a box with a 4 pixel #6E5558 colored shadow looks like.



```
.boxshadow{ -moz-box-shadow:4px 4px 4px  
4px #6E5558; -webkit-box-shadow:4px 4px  
4px 4px #6E5558; box-shadow:4px 4px 4px  
4px #6E5558 }
```

# Background

The CSS property to change the background color of an element to Hex 6E5558 is called "background". The background property can be set on classes, ids or directly on the HTML element.

```
.background, #background, body{  
background:#6E5558 }
```

If only the background color should be changed can be used:

```
.background{ background-color:#6E5558 }
```

This example shows the color as background, it is applied via the CSS property "background".

To optimize and compress your CSS code, you can use our [online CSS compressor and optimizer](#) based on csstidy. If you want to create a linear or radial gradient as background or border, check our [CSS Gradient Generator](#).



Hey! You found this booklet interesting? Support Converting Colors with the new Membership Option!

The pro membership hides all ads, plus gives you double the colors in the color bucket, and more awesome pro features!

**[Learn more, Memberships starting at \\$2.50/m!](#)**

**Follow me  
on Twitter!**

@ConvertingColor