

Converting Colors

Hex(704D4C)

Have a look what the booklet for
Hex(704D4C) contains.

Hex(704D4C)	3
<i>Conversions</i>	4
<i>Details</i>	6
<i>Harmonies</i>	11
<i>Previews</i>	23
<i>Color Blindness Simulation</i>	26
<i>CSS Examples</i>	29

Color

Hex(704D4C)

Conversions

Conversions Part 1

Format	Color
Hex	704D4C
RGB	112, 77, 76
RGB Percent	44%, 30%, 30%
CMY	0.5608, 0.6980, 0.7020
CMYK	0.00, 0.31, 0.32, 0.56
HSL	2°, 19%, 37%
HSV	2°, 32%, 44%
XYZ	10.6405, 9.2743, 8.0668
YIQ	87.3510, 21.1810, 7.1090

Conversions

Conversions Part 2

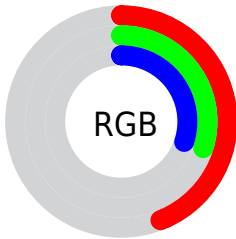
Format	Color
R_{YB}	112, 77, 76
Decimal	7359820
CIE _{Lab}	36.51, 14.65, 6.53
CIE _{LCh}	37, 16.043, 24.018
Yxy	9.2743, 0.3803, 0.3314
Android (android.graphics.Color)	4285549900 (0xFF704D4C)
YUV	87.3510, -5.5960, 21.6172
Hunter-Lab	30.4537, 9.0735, 5.6125

Details

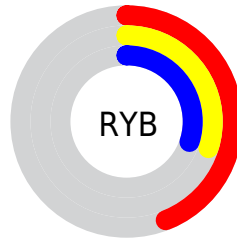
The Hex color **704D4C** is a dark color, and the websafe version is hex **663333**. A complement of this color would be **4C6F70**, and the grayscale version is **575757**.

A 20% lighter version of the original color is **A57E7D**, and **3F2020** is the 20% darker color. If you saturate the color by 10%, you get **704241**, and if you desaturate by 10%, it is **705857**.

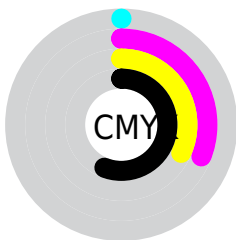
Distribution



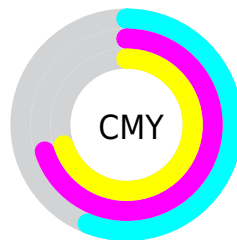
- Red (44%)
- Green (30%)
- Blue (30%)



- Red (44%)
- Yellow (30%)
- Blue (30%)



- Cyan (0%)
- Magenta (31%)
- Yellow (32%)
- Black (56%)



- Cyan (56%)
- Magenta (70%)
- Yellow (70%)

Brightness & Saturation Gradients

These gradients show how the Hex color 704D4C changes by changing the brightness by 10 percent. The first figure shows a shift by +10% for each color and the second figure -10%.

Similar to the brightness gradients but the following saturation gradients show a change of the Hex color 704D4C by changing the saturation by 10% instead.

 704D4C

 704D4C

FFFFFF

 573635

 A57E7D

 3F2020

 C09897

 280B09

 DCB3B1

 000000

 F9CFCD

 FFEBE9

 704D4C

 704D4C

 704241

 705857

 703736

 706362

 702C2A

 706E6E

 70211F

 707979

 701714

 708384

 700C09

 708E8F

 700300

 70999A

 70A4A6

 70AFB1

Harmonies

Analogous

The Analogous color harmony consists of three colors that are next to each other on the color wheel.



6E4D59



704D4C



6C5042

Triad

The Triadic color harmony groups three colors that are evenly spaced from another and form a triangle on the color wheel.



704D4C



465B46



42586F

Complementary

The Complementary color scheme is a pair of colors which are on the opposite of each other on the color wheel.



704D4C



4C6F70

Split Complementary

Split-complementary colors differ from the complementary color scheme. The scheme consists of three colors, the original color and two neighbors of the complement color.



335B6A



704D4C



385D53

Square

The Square scheme is like the rectangle color scheme, but the four colors are evenly spaced on the color wheel.



704D4C



54583E



305D60



54536D

Rectangle

The Rectangle color scheme consists of four colors that form a rectangle on the color wheel.



704D4C



65533D



305D60



3D596E

Sweetspot

The Sweet Spot groups the original color and five complimentary colors.



704D4C



918383



704C6F



4A4141



C9C9C9



4A4A4A

Same Dimension

The Same Dimension uses a secret algorithm to generate beautiful new colors.



704D4C



915A59



705F4C



383332



780300



F70700

Inverse Universe

The Inverse Universe completely reimagines the original color for something new.



4C6F70



599091



4C5D70



323838



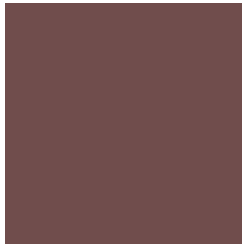
007578



00F0F7

Previews

White Background



This preview shows how the Hex color 704D4C looks on a white background.

Color Contrast Check

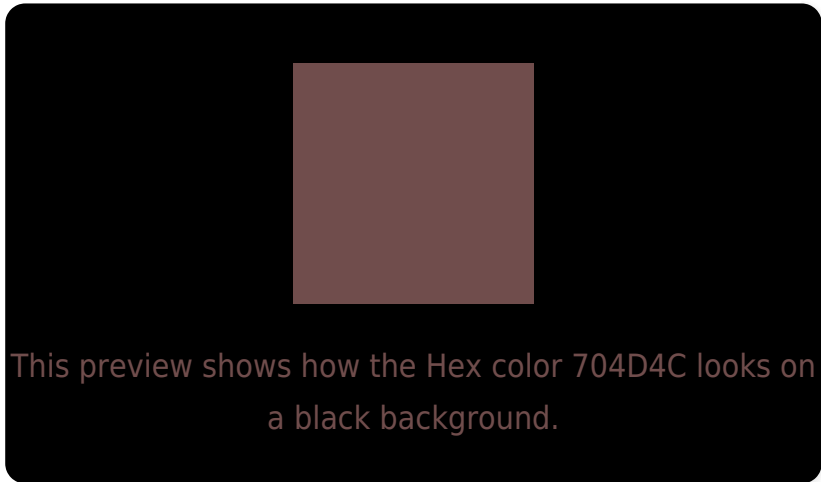
Large Text (above 18pt) WCAG AA ✓ Pass

Any Text WCAG AA ✓ Pass

Large Text (above 18pt) WCAG AAA ✓ Pass

Any Text WCAG AAA ✓ Pass

Black Background



Color Contrast Check

Large Text (above 18pt) WCAG AA × Fail

Any Text WCAG AA × Fail

Large Text (above 18pt) WCAG AAA × Fail

Any Text WCAG AAA × Fail

If you want to check with other color combinations, try the [Color Contrast Checker](#).

Hex 704D4C Background



This preview shows how black text looks on a background with the Hex color 704D4C.



This preview shows how white text looks on a background with the Hex color 704D4C.

Color Blindness Simulation

Color vision deficiency is a very complex topic, and I could not describe the different causes any better than Wikipedia does, so if you want to learn more, you should check out their [article about color blindness](#).

Dichromacy



Original Color
704D4C

Protanopia
595651

Deuteranopia
63534B



Tritanopia
714C52

Trichromacy



Original Color

704D4C

Protanomaly

61534F

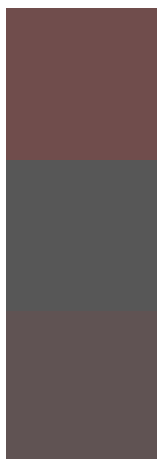
Deuteranomaly

68514B

Tritanomaly

714C50

Monochromacy



Original Color

704D4C

Achromatopsia

575757

Achromatomaly

605353

CSS Examples

Text

The CSS property to change the color of the text to Hex 704D4C is called "color". The color property can be set on classes, ids or directly on the HTML element.

This example shows how text in the color #704D4C looks like.

```
.text, #text, p{  
    color:#704D4C  
}
```

If you want to add a text shadow in that color use the text-shadow property, you can generate a text shadow directly with our [CSS Text Shadow Generator](#).

Here you see how black text with a 4 pixel #704D4C colored shadow looks like.

```
.shadow{ text-shadow: 4px 4px 2px #704D4C
}
```

Border

The CSS property to change the border of an element to Hex 704D4C is called "border". The border property can be set on classes, ids or directly on the HTML element.

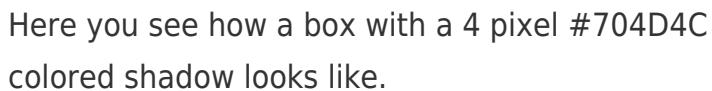
This example shows the color as border, it can be applied via the CSS property "border" or "border-color".

```
.border, #border, table{ border:4px solid
#704D4C }
```

If only the border color should be changed use the property `border-color`.

```
.border{ border-color:#704D4C }
```

If you want to add a box shadow in that color use:



Here you see how a box with a 4 pixel #704D4C colored shadow looks like.

```
.boxshadow{ -moz-box-shadow:4px 4px 4px  
4px #704D4C; -webkit-box-shadow:4px 4px  
4px 4px #704D4C; box-shadow:4px 4px 4px  
4px #704D4C }
```

Background

The CSS property to change the background color of an element to Hex 704D4C is called "background". The background property can be set on classes, ids or directly on the HTML element.

```
.background, #background, body{  
background:#704D4C }
```

If only the background color should be changed can be used:

```
.background{ background-color:#704D4C }
```

This example shows the color as background, it is applied via the CSS property "background".

To optimize and compress your CSS code, you can use our [online CSS compressor and optimizer](#) based on csstidy. If you want to create a linear or radial gradient as background or border, check our [CSS Gradient Generator](#).

Hey! You found this booklet interesting? Support Converting Colors with the new Membership Option!

The pro membership hides all ads, plus gives you double the colors in the color bucket, and more awesome pro features!

[Learn more, Memberships starting at \\$2.50/m!](#)

**Follow me
on Twitter!**

@ConvertingColor