

Converting Colors

Hex(761AC1)

Have a look what the booklet for
Hex(761AC1) contains.

Hex(761AC1)	3
<i>Conversions</i>	4
<i>Details</i>	6
<i>Harmonies</i>	11
<i>Previews</i>	23
<i>Color Blindness Simulation</i>	26
<i>CSS Examples</i>	29

Color

Hex(761AC1)

Conversions

Conversions Part 1

Format	Color
Hex	761AC1
RGB	118, 26, 193
RGB Percent	46%, 10%, 76%
CMY	0.5373, 0.8980, 0.2431
CMYK	0.39, 0.87, 0.00, 0.24
HSL	273°, 76%, 43%
HSV	273°, 87%, 76%
XYZ	17.4662, 8.4406, 51.1607
YIQ	72.5460, 1.2250, 71.4410

Conversions

Conversions Part 2

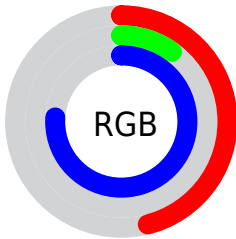
Format	Color
R_{YB}	118, 26, 193
Decimal	7740097
CIE _{Lab}	34.88, 64.94, -67.75
CIE _{LCh}	35, 93.848, 313.784
Yxy	8.4406, 0.2266, 0.1095
Android (android.graphics.Color)	4285930177 (0xFF761AC1)
YUV	72.5460, 59.3838, 39.8632
Hunter-Lab	29.0527, 56.4705, -84.0705

Details

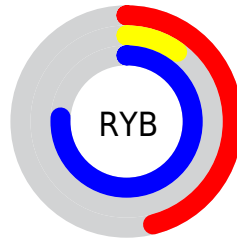
The Hex color **761AC1** is a dark color, and the websafe version is hex **6633CC**. The color can be described as dark washed purple. A complement of this color would be **65C11A**, and the grayscale version is **484848**.

A 20% lighter version of the original color is **B156FB**, and **3A008A** is the 20% darker color. If you saturate the color by 10%, you get **6D07C1**, and if you desaturate by 10%, it is **7F2DC1**.

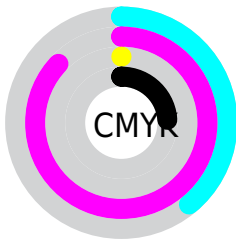
Distribution



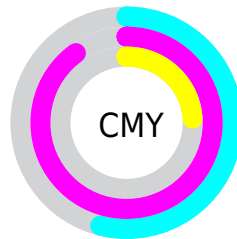
- Red (46%)
- Green (10%)
- Blue (76%)



- Red (46%)
- Yellow (10%)
- Blue (76%)



- Cyan (39%)
- Magenta (87%)
- Yellow (0%)
- Black (24%)



- Cyan (54%)
- Magenta (90%)
- Yellow (24%)

Brightness & Saturation Gradients

These gradients show how the Hex color 761AC1 changes by changing the brightness by 10 percent. The first figure shows a shift by +10% for each color and the second figure -10%.

Similar to the brightness gradients but the following saturation gradients show a change of the Hex color 761AC1 by changing the saturation by 10% instead.

■ 761AC1

■ 761AC1

FFFFFF

■ 5900A5

■ B156FB

■ 3A008A

■ CE71FF

■ 150070

■ EC8DFF

■ 000056

■ FFA8FF

■ 00063E

■ FFC5FF

■ 000327

■ FFE2FF

■ 000110

■ 000000

■ 761AC1

■ 761AC1

6D07C1

7F2DC1

6A00C1

8741C1

9054C1

9967C1

A17AC1

AA8EC1

B3A1C1

BBB4C1

C4C8C1

Harmonies

Analogous

The Analogous color harmony consists of three colors that are next to each other on the color wheel.



0053E9



761AC1



BC007E

Triad

The Triadic color harmony groups three colors that are evenly spaced from another and form a triangle on the color wheel.



761AC1



853F00



006C74

Complementary

The Complementary color scheme is a pair of colors which are on the opposite of each other on the color wheel.



761AC1



65C11A

Split Complementary

Split-complementary colors differ from the complementary color scheme. The scheme consists of three colors, the original color and two neighbors of the complement color.



006A23



761AC1



445A00

Square

The Square scheme is like the rectangle color scheme, but the four colors are evenly spaced on the color wheel.



761AC1



B30000



006500



006DBB

Rectangle

The Rectangle color scheme consists of four colors that form a rectangle on the color wheel.



761AC1



CA004D



006500



006B5A

Sweetspot

The Sweet Spot groups the original color and five complimentary colors.



761AC1



DDB9FA



1A65C1



6C567D



FCFCFC



7D7D7D

Same Dimension

The Same Dimension uses a secret algorithm to generate beautiful new colors.



761AC1



8A00FA



C11AB9



5D5761



5900A1



120021

Inverse Universe

The Inverse Universe completely reimagines the original color for something new.



C11A65



FA0070



1AC122



61575C



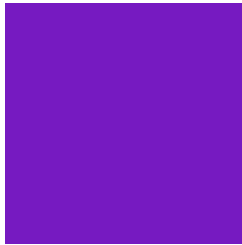
A10048



21000F

Previews

White Background



This preview shows how the Hex color 761AC1 looks on a white background.

Color Contrast Check

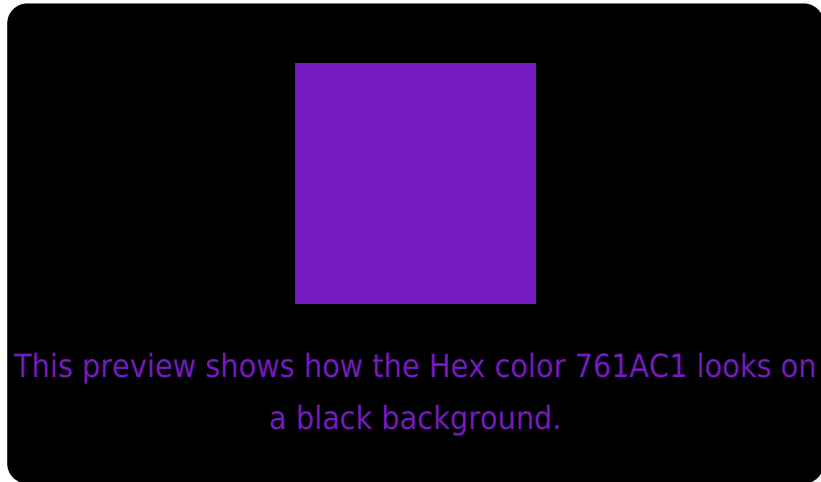
Large Text (above 18pt) WCAG AA ✓ Pass

Any Text WCAG AA ✓ Pass

Large Text (above 18pt) WCAG AAA ✓ Pass

Any Text WCAG AAA ✓ Pass

Black Background



Color Contrast Check

Large Text (above 18pt) WCAG AA × Fail

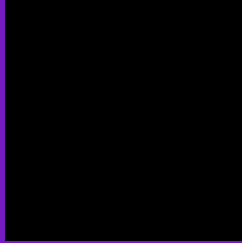
Any Text WCAG AA × Fail

Large Text (above 18pt) WCAG AAA × Fail

Any Text WCAG AAA × Fail

If you want to check with other color combinations, try the [Color Contrast Checker](#).

Hex 761AC1 Background



This preview shows how black text looks on a background with the Hex color 761AC1.

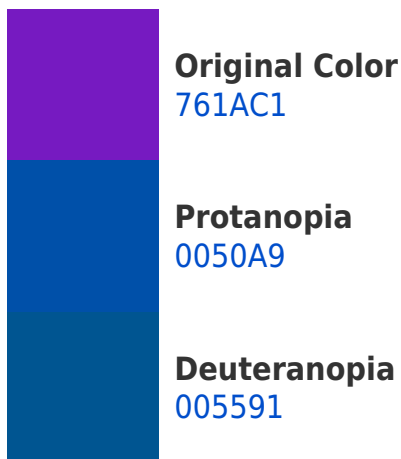


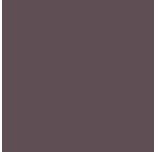
This preview shows how white text looks on a background with the Hex color 761AC1.

Color Blindness Simulation

Color vision deficiency is a very complex topic, and I could not describe the different causes any better than Wikipedia does, so if you want to learn more, you should check out their [article about color blindness](#).

Dichromacy





Tritanopia
5F4E54

Trichromacy



Original Color
761AC1



Protanomaly
2B3CB2



Deuteranomaly
2B40A2



Tritanomaly
673B7C

Monochromacy



Original Color
761AC1



Achromatopsia
494949



Achromatomaly
593875

CSS Examples

Text

The CSS property to change the color of the text to Hex 761AC1 is called "color". The color property can be set on classes, ids or directly on the HTML element.

This example shows how text in the color #761AC1 looks like.

```
.text, #text, p{  
    color:#761AC1  
}
```

If you want to add a text shadow in that color use the text-shadow property, you can generate a text shadow directly with our [CSS Text Shadow Generator](#).

Here you see how black text with a 4 pixel #761AC1 colored shadow looks like.

```
.shadow{ text-shadow: 4px 4px 2px #761AC1
}
```

Border

The CSS property to change the border of an element to Hex 761AC1 is called "border". The border property can be set on classes, ids or directly on the HTML element.

This example shows the color as border, it can be applied via the CSS property "border" or "border-color".

```
.border, #border, table{ border:4px solid
#761AC1 }
```

If only the border color should be changed use the property `border-color`.

```
.border{ border-color:#761AC1 }
```

If you want to add a box shadow in that color use:

Here you see how a box with a 4 pixel #761AC1 colored shadow looks like.

```
.boxshadow{ -moz-box-shadow:4px 4px 4px  
4px #761AC1; -webkit-box-shadow:4px 4px  
4px 4px #761AC1; box-shadow:4px 4px 4px  
4px #761AC1 }
```

Background

The CSS property to change the background color of an element to Hex 761AC1 is called "background". The background property can be set on classes, ids or directly on the HTML element.

```
.background, #background, body{  
background:#761AC1 }
```

If only the background color should be changed can be used:

```
.background{ background-color:#761AC1 }
```

This example shows the color as background, it is applied via the CSS property "background".

To optimize and compress your CSS code, you can use our [online CSS compressor and optimizer](#) based on csstidy. If you want to create a linear or radial gradient as background or border, check our [CSS Gradient Generator](#).

Hey! You found this booklet interesting? Support Converting Colors with the new Membership Option!

The pro membership hides all ads, plus gives you double the colors in the color bucket, and more awesome pro features!

[Learn more, Memberships starting at \\$2.50/m!](#)

**Follow me
on Twitter!**

@ConvertingColor