

Converting Colors

Hex(76484E)

Have a look what the booklet for
Hex(76484E) contains.

Hex(76484E)	3
<i>Conversions</i>	4
<i>Details</i>	6
<i>Harmonies</i>	11
<i>Previews</i>	23
<i>Color Blindness Simulation</i>	26
<i>CSS Examples</i>	29

Color

Hex(76484E)

Conversions

Conversions Part 1

Format	Color
Hex	76484E
RGB	118, 72, 78
RGB Percent	46%, 28%, 31%
CMY	0.5373, 0.7176, 0.6941
CMYK	0.00, 0.39, 0.34, 0.54
HSL	352°, 24%, 37%
HSV	352°, 39%, 46%
XYZ	11.1637, 9.0363, 8.3635
YIQ	86.4380, 25.4900, 11.6180

Conversions

Conversions Part 2

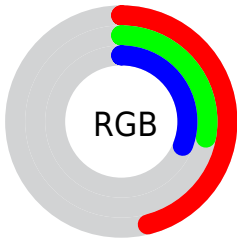
Format	Color
RYB	118, 72, 78
Decimal	7751758
CIELab	36.05, 20.49, 4.73
CIELCh	36, 21.033, 13.000
Yxy	9.0363, 0.3908, 0.3164
Android (android.graphics.Color)	4285941838 (0xFF76484E)
YUV	86.4380, -4.1599, 27.6799
Hunter-Lab	30.0605, 13.6846, 4.5465

Details

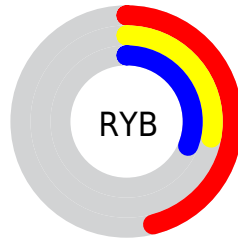
The Hex color **76484E** is a dark color, and the websafe version is hex **663333**. A complement of this color would be **487670**, and the grayscale version is **565656**.

A 20% lighter version of the original color is **AC797F**, and **441B22** is the 20% darker color. If you saturate the color by 10%, you get **763C44**, and if you desaturate by 10%, it is **765458**.

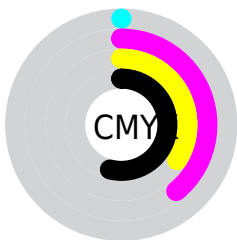
Distribution



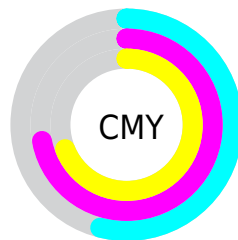
- Red (46%)
- Green (28%)
- Blue (31%)



- Red (46%)
- Yellow (28%)
- Blue (31%)



- Cyan (0%)
- Magenta (39%)
- Yellow (34%)
- Black (54%)



- Cyan (54%)
- Magenta (72%)
- Yellow (69%)

Brightness & Saturation Gradients

These gradients show how the Hex color 76484E changes by changing the brightness by 10 percent. The first figure shows a shift by +10% for each color and the second figure -10%.

Similar to the brightness gradients but the following saturation gradients show a change of the Hex color 76484E by changing the saturation by 10% instead.

 76484E

 76484E

FFFFFF

 5C3137

 AC797F

 441B22

 C79399

 2D050B

 E4AEB4

 090000

 FFC9CF

 000000

 FFE6EB

 76484E

 76484E

 763C44

 765458

 763039

 766063

 76252F

 766B6D

 761925

 767777

 760D1B

 768381

 760110

 768F8C

 76000F

 769B96

 76A6A0

 76B2AA

Harmonies

Analogous

The Analogous color harmony consists of three colors that are next to each other on the color wheel.



70495F



76484E



734B3F

Triad

The Triadic color harmony groups three colors that are evenly spaced from another and form a triangle on the color wheel.



76484E



465B3C



2E5975

Complementary

The Complementary color scheme is a pair of colors which are on the opposite of each other on the color wheel.



76484E



487670

Split Complementary

Split-complementary colors differ from the complementary color scheme. The scheme consists of three colors, the original color and two neighbors of the complement color.



195D6B



76484E



325D4A

Square

The Square scheme is like the rectangle color scheme, but the four colors are evenly spaced on the color wheel.



76484E



595634



1E5E5C



495475

Rectangle

The Rectangle color scheme consists of four colors that form a rectangle on the color wheel.



76484E



6D4F37



1E5E5C



255B72

Sweetspot

The Sweet Spot groups the original color and five complimentary colors.



76484E



998789



704876



4D4243



CCCCCC



4D4D4D

Same Dimension

The Same Dimension uses a secret algorithm to generate beautiful new colors.



76484E



99515A



765948



3B3536



7A0010



FA0021

Inverse Universe

The Inverse Universe completely reimagines the original color for something new.



76484E



99515A



486576



3B3536



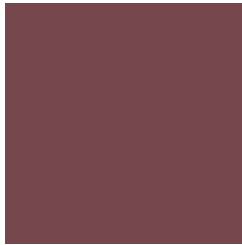
7A0010



FA0021

Previews

White Background



This preview shows how the Hex color 76484E looks on a white background.

Color Contrast Check

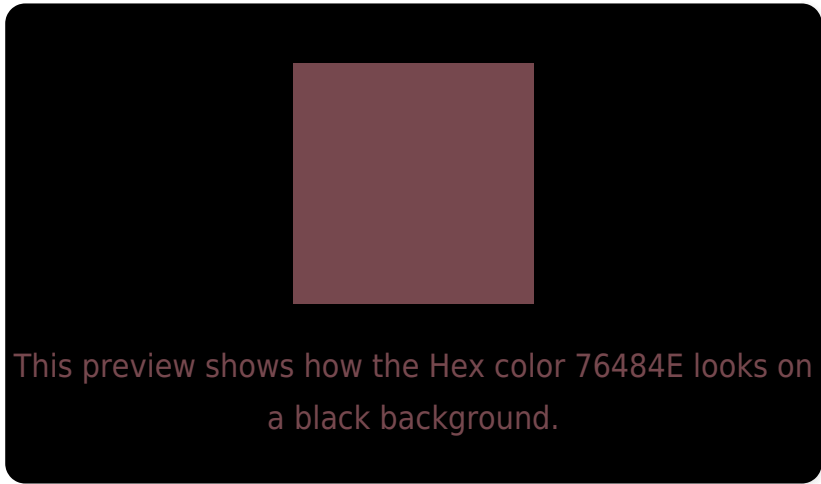
Large Text (above 18pt) WCAG AA ✓ Pass

Any Text WCAG AA ✓ Pass

Large Text (above 18pt) WCAG AAA ✓ Pass

Any Text WCAG AAA ✓ Pass

Black Background



Color Contrast Check

Large Text (above 18pt) WCAG AA × Fail

Any Text WCAG AA × Fail

Large Text (above 18pt) WCAG AAA × Fail

Any Text WCAG AAA × Fail

If you want to check with other color combinations, try the [Color Contrast Checker](#).

Hex 76484E Background



This preview shows how black text looks on a background with the Hex color 76484E.



This preview shows how white text looks on a background with the Hex color 76484E.

Color Blindness Simulation

Color vision deficiency is a very complex topic, and I could not describe the different causes any better than Wikipedia does, so if you want to learn more, you should check out their [article about color blindness](#).


Dichromacy



Original Color
76484E

Protanopia
575555

Deuteranopia
61524C



Tritanopia
76484D

Trichromacy



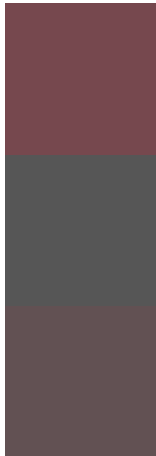
Original Color
76484E

Protanomaly
625052

Deuteranomaly
694E4D

Tritanomaly
76484D

Monochromacy



Original Color
76484E

Achromatopsia
565656

Achromatomaly
625153

CSS Examples

Text

The CSS property to change the color of the text to Hex 76484E is called "color". The color property can be set on classes, ids or directly on the HTML element.

This example shows how text in the color #76484E looks like.

```
.text, #text, p{  
    color:#76484E  
}
```

If you want to add a text shadow in that color use the text-shadow property, you can generate a text shadow directly with our [CSS Text Shadow Generator](#).

Here you see how black text with a 4 pixel #76484E colored shadow looks like.

```
.shadow{ text-shadow: 4px 4px 2px #76484E
}
```

Border

The CSS property to change the border of an element to Hex 76484E is called "border". The border property can be set on classes, ids or directly on the HTML element.

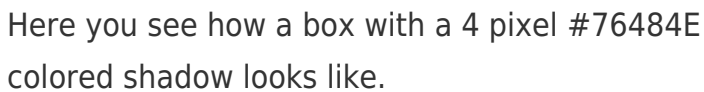
This example shows the color as border, it can be applied via the CSS property "border" or "border-color".

```
.border, #border, table{ border:4px solid
#76484E }
```

If only the border color should be changed use the property `border-color`.

```
.border{ border-color:#76484E }
```

If you want to add a box shadow in that color use:



Here you see how a box with a 4 pixel #76484E colored shadow looks like.

```
.boxshadow{ -moz-box-shadow:4px 4px 4px  
4px #76484E; -webkit-box-shadow:4px 4px  
4px 4px #76484E; box-shadow:4px 4px 4px  
4px #76484E }
```

Background

The CSS property to change the background color of an element to Hex 76484E is called "background". The background property can be set on classes, ids or directly on the HTML element.

```
.background, #background, body{  
background:#76484E }
```

If only the background color should be changed can be used:

```
.background{ background-color:#76484E }
```

This example shows the color as background, it is applied via the CSS property "background".

To optimize and compress your CSS code, you can use our [online CSS compressor and optimizer](#) based on csstidy. If you want to create a linear or radial gradient as background or border, check our [CSS Gradient Generator](#).

Hey! You found this booklet interesting? Support Converting Colors with the new Membership Option!

The pro membership hides all ads, plus gives you double the colors in the color bucket, and more awesome pro features!

[Learn more, Memberships starting at \\$2.50/m!](#)

**Follow me
on Twitter!**

@ConvertingColor