

Converting Colors

Hex(775E4E)

Have a look what the booklet for
Hex(775E4E) contains.

Hex(775E4E)	3
<i>Conversions</i>	4
<i>Details</i>	6
<i>Harmonies</i>	11
<i>Previews</i>	23
<i>Color Blindness Simulation</i>	26
<i>CSS Examples</i>	29

Color

Hex(775E4E)

Conversions

Conversions Part 1

Format	Color
Hex	775E4E
RGB	119, 94, 78
RGB Percent	47%, 37%, 31%
CMY	0.5333, 0.6314, 0.6941
CMYK	0.00, 0.21, 0.34, 0.53
HSL	23°, 21%, 39%
HSV	23°, 34%, 47%
XYZ	12.9856, 12.4774, 8.9317
YIQ	99.6510, 20.0360, 0.3240

Conversions

Conversions Part 2

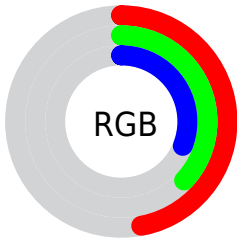
Format	Color
R_{YB}	119, 104, 78
Decimal	7822926
CIE _{Lab}	41.97, 7.67, 13.04
CIE _{LCh}	42, 15.128, 59.532
Yxy	12.4774, 0.3775, 0.3628
Android (android.graphics.Color)	4286013006 (0xFF775E4E)
YUV	99.6510, -10.6739, 16.9691
Hunter-Lab	35.3234, 3.8044, 9.7346

Details

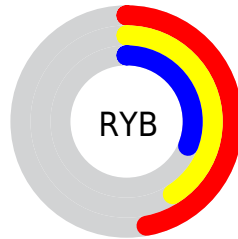
The Hex color **775E4E** is a dark color, and the websafe version is hex **666666**. A complement of this color would be **4E6777**, and the grayscale version is **646464**.

A 20% lighter version of the original color is **AC907F**, and **453022** is the 20% darker color. If you saturate the color by 10%, you get **775742**, and if you desaturate by 10%, it is **77655A**.

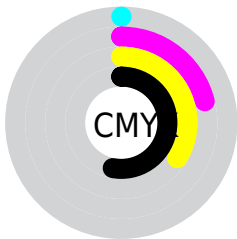
Distribution



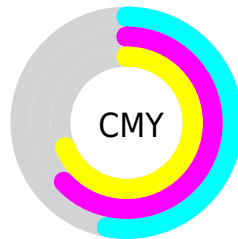
- Red (47%)
- Green (37%)
- Blue (31%)



- Red (47%)
- Yellow (41%)
- Blue (31%)



- Cyan (0%)
- Magenta (21%)
- Yellow (34%)
- Black (53%)



- Cyan (53%)
- Magenta (63%)
- Yellow (69%)

Brightness & Saturation Gradients

These gradients show how the Hex color 775E4E changes by changing the brightness by 10 percent. The first figure shows a shift by +10% for each color and the second figure -10%.

Similar to the brightness gradients but the following saturation gradients show a change of the Hex color 775E4E by changing the saturation by 10% instead.



775E4E



775E4E

FFFFFF



5E4637



AC907F



453022



C8AB99



2E1B0C



E4C6B4



180100



FFE2CF



000000



FFF FEC



775E4E



775E4E



775742



77655A



774F36



776D66

■ 77482A

■ 777472

■ 77411E

■ 777B7E

■ 773A13

■ 77828A

■ 773207

■ 778A95

■ 772E00

■ 7791A1

■ 7798AD

■ 779FB9

Harmonies

Analogous

The Analogous color harmony consists of three colors that are next to each other on the color wheel.



7C5B57



775E4E



6D624A

Triad

The Triadic color harmony groups three colors that are evenly spaced from another and form a triangle on the color wheel.



775E4E



456A62



656079

Complementary

The Complementary color scheme is a pair of colors which are on the opposite of each other on the color wheel.



775E4E



4E6777

Split Complementary

Split-complementary colors differ from the complementary color scheme. The scheme consists of three colors, the original color and two neighbors of the complement color.



54647C



775E4E



406A6F

Square

The Square scheme is like the rectangle color scheme, but the four colors are evenly spaced on the color wheel.



775E4E



516956



456878



735C70

Rectangle

The Rectangle color scheme consists of four colors that form a rectangle on the color wheel.



775E4E



64654B



456878



5F617A

Sweetspot

The Sweet Spot groups the original color and five complimentary colors.



775E4E



9C928C



774E67



4F4946



CFCFCF



4F4F4F

Same Dimension

The Same Dimension uses a secret algorithm to generate beautiful new colors.



775E4E



9C755C



77724E



3B3735



7A3000



FA6200

Inverse Universe

The Inverse Universe completely reimagines the original color for something new.



4E6777



5C839C



4E5377



35383B



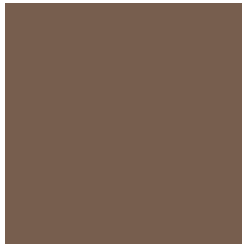
004B7A



0098FA

Previews

White Background



This preview shows how the Hex color 775E4E looks on a white background.

Color Contrast Check

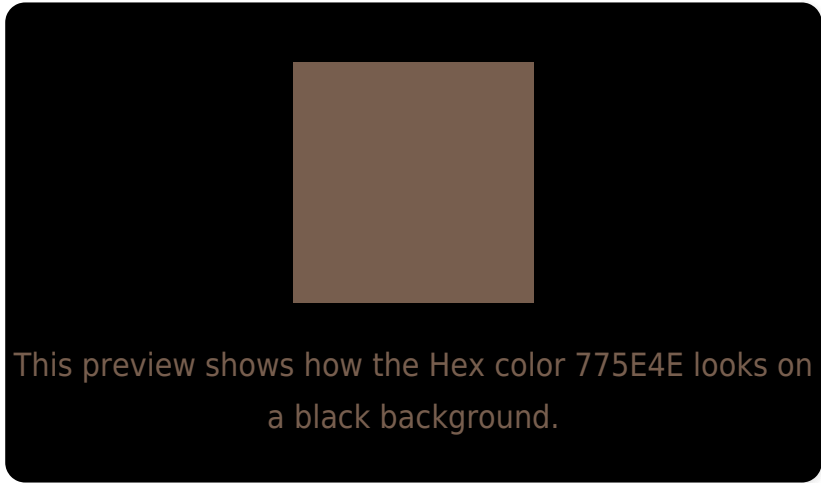
Large Text (above 18pt) WCAG AA ✓ Pass

Any Text WCAG AA ✓ Pass

Large Text (above 18pt) WCAG AAA ✓ Pass

Any Text WCAG AAA × Fail

Black Background



Color Contrast Check

Large Text (above 18pt) WCAG AA ✓ Pass

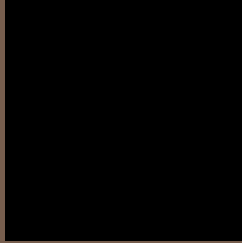
Any Text WCAG AA × Fail

Large Text (above 18pt) WCAG AAA × Fail

Any Text WCAG AAA × Fail

If you want to check with other color combinations, try the [Color Contrast Checker](#).

Hex 775E4E Background



This preview shows how black text looks on a background with the Hex color 775E4E.



This preview shows how white text looks on a background with the Hex color 775E4E.

Color Blindness Simulation

Color vision deficiency is a very complex topic, and I could not describe the different causes any better than Wikipedia does, so if you want to learn more, you should check out their [article about color blindness](#).

Dichromacy



Original Color
775E4E

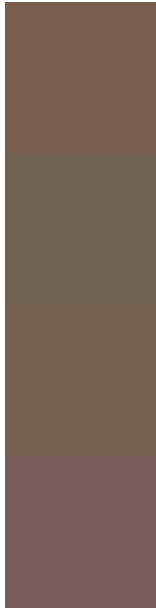
Protanopia
696350

Deuteranopia
745F4E



Tritanopia
795B62

Trichromacy



Original Color
775E4E

Protanomaly
6E614F

Deuteranomaly
755F4E

Tritanomaly
785C5B

Monochromacy



Original Color
775E4E

Achromatopsia
646464

Achromatomaly
6B625C

CSS Examples

Text

The CSS property to change the color of the text to Hex 775E4E is called "color". The color property can be set on classes, ids or directly on the HTML element.

This example shows how text in the color #775E4E looks like.

```
.text, #text, p{  
    color:#775E4E  
}
```

If you want to add a text shadow in that color use the text-shadow property, you can generate a text shadow directly with our [CSS Text Shadow Generator](#).

Here you see how black text with a 4 pixel #775E4E colored shadow looks like.

```
.shadow{ text-shadow: 4px 4px 2px #775E4E
}
```

Border

The CSS property to change the border of an element to Hex 775E4E is called "border". The border property can be set on classes, ids or directly on the HTML element.

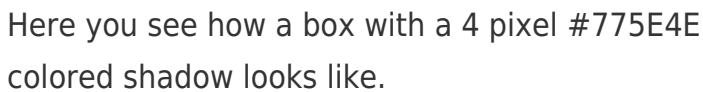
This example shows the color as border, it can be applied via the CSS property "border" or "border-color".

```
.border, #border, table{ border:4px solid
#775E4E }
```

If only the border color should be changed use the property `border-color`.

```
.border{ border-color:#775E4E }
```

If you want to add a box shadow in that color use:



Here you see how a box with a 4 pixel #775E4E colored shadow looks like.

```
.boxshadow{ -moz-box-shadow:4px 4px 4px  
4px #775E4E; -webkit-box-shadow:4px 4px  
4px 4px #775E4E; box-shadow:4px 4px 4px  
4px #775E4E }
```

Background

The CSS property to change the background color of an element to Hex 775E4E is called "background". The background property can be set on classes, ids or directly on the HTML element.

```
.background, #background, body{  
background:#775E4E }
```

If only the background color should be changed can be used:

```
.background{ background-color:#775E4E }
```

This example shows the color as background, it is applied via the CSS property "background".

To optimize and compress your CSS code, you can use our [online CSS compressor and optimizer](#) based on csstidy. If you want to create a linear or radial gradient as background or border, check our [CSS Gradient Generator](#).

Hey! You found this booklet interesting? Support Converting Colors with the new Membership Option!

The pro membership hides all ads, plus gives you double the colors in the color bucket, and more awesome pro features!

[Learn more, Memberships starting at \\$2.50/m!](#)

**Follow me
on Twitter!**

@ConvertingColor