

Converting Colors

Hex(794C52)

Have a look what the booklet for
Hex(794C52) contains.

Hex(794C52)	3
<i>Conversions</i>	4
<i>Details</i>	6
<i>Harmonies</i>	11
<i>Previews</i>	23
<i>Color Blindness Simulation</i>	26
<i>CSS Examples</i>	29

Color

Hex(794C52)

Conversions

Conversions Part 1

Format	Color
Hex	794C52
RGB	121, 76, 82
RGB Percent	47%, 30%, 32%
CMY	0.5255, 0.7020, 0.6784
CMYK	0.00, 0.37, 0.32, 0.53
HSL	352°, 23%, 39%
HSV	352°, 37%, 47%
XYZ	11.9926, 9.8430, 9.2505
YIQ	90.1390, 24.8940, 11.4060

Conversions

Conversions Part 2

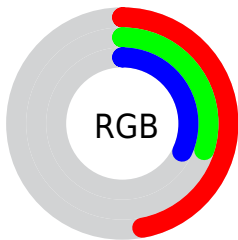
Format	Color
RYB	121, 76, 82
Decimal	7949394
CIELab	37.56, 19.92, 4.42
CIELCh	38, 20.407, 12.513
Yxy	9.8430, 0.3858, 0.3166
Android (android.graphics.Color)	4286139474 (0xFF794C52)
YUV	90.1390, -4.0125, 27.0651
Hunter-Lab	31.3736, 13.3280, 4.4800

Details

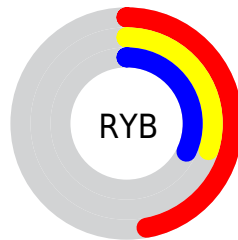
The Hex color **794C52** is a dark color, and the websafe version is hex **663333**. A complement of this color would be **4C7973**, and the grayscale version is **5A5A5A**.

A 20% lighter version of the original color is **AF7D83**, and **471F25** is the 20% darker color. If you saturate the color by 10%, you get **794048**, and if you desaturate by 10%, it is **79585C**.

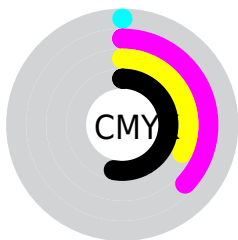
Distribution



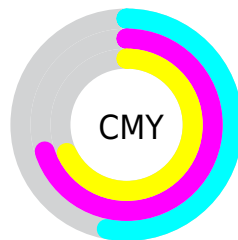
- Red (47%)
- Green (30%)
- Blue (32%)



- Red (47%)
- Yellow (30%)
- Blue (32%)



- Cyan (0%)
- Magenta (37%)
- Yellow (32%)
- Black (53%)



- Cyan (53%)
- Magenta (70%)
- Yellow (68%)

Brightness & Saturation Gradients

These gradients show how the Hex color 794C52 changes by changing the brightness by 10 percent. The first figure shows a shift by +10% for each color and the second figure -10%.

Similar to the brightness gradients but the following saturation gradients show a change of the Hex color 794C52 by changing the saturation by 10% instead.

 794C52

 794C52

FFFFFF

 5F353B

 AF7D83

 471F25

 CA989D

 2F0911

 E7B2B8

 150000

 FFCED4

 000000

 FFEAF0

 794C52

 794C52

 794048

 79585C

 79343D

 796467

 792833

 797071

 791C28

 797C7C

 79101E

 798986

 790313

 799591

 790010

 79A19B

 79ADA6

 79B9B0

Harmonies

Analogous

The Analogous color harmony consists of three colors that are next to each other on the color wheel.



734D63



794C52



764F43

Triad

The Triadic color harmony groups three colors that are evenly spaced from another and form a triangle on the color wheel.



794C52



4A5E40



335D77

Complementary

The Complementary color scheme is a pair of colors which are on the opposite of each other on the color wheel.



794C52



4C7973

Split Complementary

Split-complementary colors differ from the complementary color scheme. The scheme consists of three colors, the original color and two neighbors of the complement color.



21606E



794C52



37614E

Square

The Square scheme is like the rectangle color scheme, but the four colors are evenly spaced on the color wheel.



794C52



5D5A38



25615F



4D5878

Rectangle

The Rectangle color scheme consists of four colors that form a rectangle on the color wheel.



794C52



70523C



25615F



2C5E75

Sweetspot

The Sweet Spot groups the original color and five complimentary colors.



794C52



9E8D8F



734C79



4F4546



CFCFCF



4F4F4F

Same Dimension

The Same Dimension uses a secret algorithm to generate beautiful new colors.



794C52



9E5760



795C4C



3D3738



7D0011



FC0022

Inverse Universe

The Inverse Universe completely reimagines the original color for something new.



794C52



9E5760



4C6879



3D3738



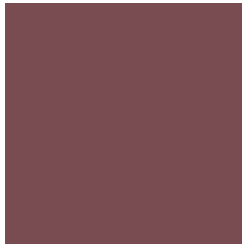
7D0011



FC0022

Previews

White Background



This preview shows how the Hex color 794C52 looks on a white background.

Color Contrast Check

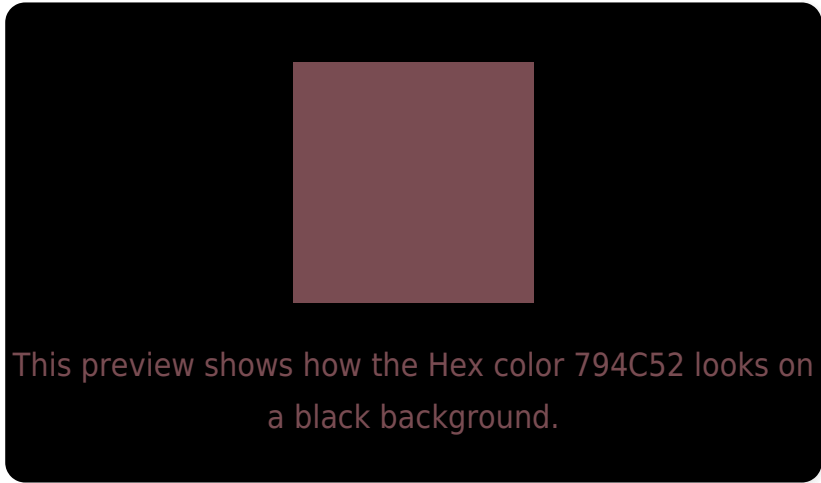
Large Text (above 18pt) WCAG AA ✓ Pass

Any Text WCAG AA ✓ Pass

Large Text (above 18pt) WCAG AAA ✓ Pass

Any Text WCAG AAA ✓ Pass

Black Background



Color Contrast Check

Large Text (above 18pt) WCAG AA × Fail

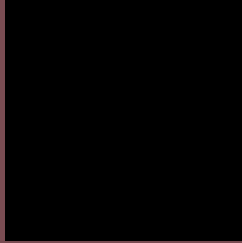
Any Text WCAG AA × Fail

Large Text (above 18pt) WCAG AAA × Fail

Any Text WCAG AAA × Fail

If you want to check with other color combinations, try the [Color Contrast Checker](#).

Hex 794C52 Background



This preview shows how black text looks on a background with the Hex color 794C52.



This preview shows how white text looks on a background with the Hex color 794C52.

Color Blindness Simulation

Color vision deficiency is a very complex topic, and I could not describe the different causes any better than Wikipedia does, so if you want to learn more, you should check out their [article about color blindness](#).

Dichromacy



Original Color
794C52

Protanopia
5A5859

Deuteranopia
645650



Tritanopia
794C52

Trichromacy



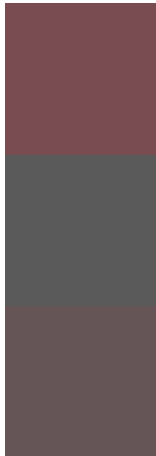
Original Color
794C52

Protanomaly
655456

Deuteranomaly
6C5251

Tritanomaly
794C52

Monochromacy



Original Color
794C52

Achromatopsia
5A5A5A

Achromatomaly
655557

CSS Examples

Text

The CSS property to change the color of the text to Hex 794C52 is called "color". The color property can be set on classes, ids or directly on the HTML element.

This example shows how text in the color #794C52 looks like.

```
.text, #text, p{  
    color:#794C52  
}
```

If you want to add a text shadow in that color use the text-shadow property, you can generate a text shadow directly with our [CSS Text Shadow Generator](#).

Here you see how black text with a 4 pixel #794C52 colored shadow looks like.

```
.shadow{ text-shadow: 4px 4px 2px #794C52
}
```

Border

The CSS property to change the border of an element to Hex 794C52 is called "border". The border property can be set on classes, ids or directly on the HTML element.

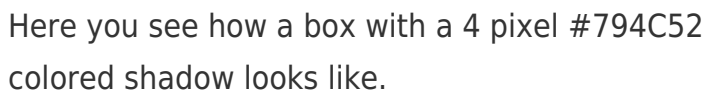
This example shows the color as border, it can be applied via the CSS property "border" or "border-color".

```
.border, #border, table{ border:4px solid
#794C52 }
```

If only the border color should be changed use the property `border-color`.

```
.border{ border-color:#794C52 }
```

If you want to add a box shadow in that color use:



Here you see how a box with a 4 pixel #794C52 colored shadow looks like.

```
.boxshadow{ -moz-box-shadow:4px 4px 4px  
4px #794C52; -webkit-box-shadow:4px 4px  
4px 4px #794C52; box-shadow:4px 4px 4px  
4px #794C52 }
```

Background

The CSS property to change the background color of an element to Hex 794C52 is called "background". The background property can be set on classes, ids or directly on the HTML element.

```
.background, #background, body{  
background:#794C52 }
```

If only the background color should be changed can be used:

```
.background{ background-color:#794C52 }
```

This example shows the color as background, it is applied via the CSS property "background".

To optimize and compress your CSS code, you can use our [online CSS compressor and optimizer](#) based on csstidy. If you want to create a linear or radial gradient as background or border, check our [CSS Gradient Generator](#).

Hey! You found this booklet interesting? Support Converting Colors with the new Membership Option!

The pro membership hides all ads, plus gives you double the colors in the color bucket, and more awesome pro features!

[Learn more, Memberships starting at \\$2.50/m!](#)

**Follow me
on Twitter!**

@ConvertingColor