

# Converting Colors

Hex(795F5F)

Have a look what the booklet for  
Hex(795F5F) contains.

<b>Hex(795F5F)</b> .....	3
<i><b>Conversions</b></i> .....	4
<i><b>Details</b></i> .....	6
<i><b>Harmonies</b></i> .....	11
<i><b>Previews</b></i> .....	23
<i><b>Color Blindness Simulation</b></i> .....	26
<i><b>CSS Examples</b></i> .....	29

# Color

**Hex(795F5F)**

# Conversions

## Conversions Part 1

<b>Format</b>	<b>Color</b>
Hex	795F5F
RGB	121, 95, 95
RGB Percent	47%, 37%, 37%
CMY	0.5255, 0.6275, 0.6275
CMYK	0.00, 0.21, 0.21, 0.53
HSL	0°, 12%, 42%
HSV	0°, 21%, 47%
XYZ	14.0429, 13.0756, 12.6102
YIQ	102.7740, 15.4960, 5.5120

# Conversions

## Conversions Part 2

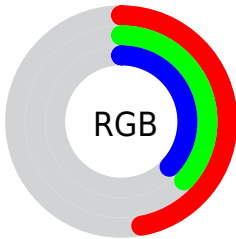
<b>Format</b>	<b>Color</b>
<b>RYB</b>	121, 95, 95
Decimal	7954271
CIELab	42.88, 10.55, 4.02
CIELCh	43, 11.290, 20.882
Yxy	13.0756, 0.3535, 0.3291
Android (android.graphics.Color)	4286144351 (0xFF795F5F)
YUV	102.7740, -3.8326, 15.9842
Hunter-Lab	36.1602, 6.0407, 4.6359

# Details

The Hex color **795F5F** is a dark color, and the websafe version is hex **666666**. A complement of this color would be **5F7979**, and the grayscale version is **676767**.

A 20% lighter version of the original color is **AE9291**, and **483131** is the 20% darker color. If you saturate the color by 10%, you get **795353**, and if you desaturate by 10%, it is **796B6B**.

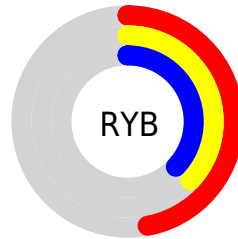
# Distribution



Red (47%)

Green (37%)

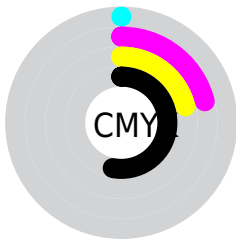
Blue (37%)



Red (47%)

Yellow (37%)

Blue (37%)

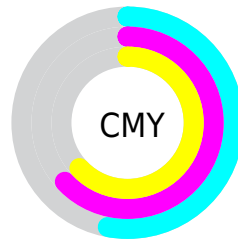


Cyan (0%)

Magenta (21%)

Yellow (21%)

Black (53%)



Cyan (53%)

Magenta (63%)

Yellow (63%)

# Brightness & Saturation Gradients

These gradients show how the Hex color 795F5F changes by changing the brightness by 10 percent. The first figure shows a shift by +10% for each color and the second figure -10%.

Similar to the brightness gradients but the following saturation gradients show a change of the Hex color 795F5F by changing the saturation by 10% instead.



 795F5F

 795F5F

FFFFFF

 604747

 AE9291

 483131

 C9ACAC

 311C1C

 E6C7C7

 1E0201

 FFE4E3

 000000

 795F5F

 795F5F

 795353

 796B6B

 794747

 797777

 793B3B

 798383

 792F2F

 798F8F

 792323

 799B9B

 791616

 79A8A8

 790A0A

 79B4B4

 790000

 79C0C0

 79CCCC

# Harmonies

## Analogous

The Analogous color harmony consists of three colors that are next to each other on the color wheel.



765F68



795F5F



766157

# Triad

The Triadic color harmony groups three colors that are evenly spaced from another and form a triangle on the color wheel.



795F5F



5B6959



576777

# Complementary

The Complementary color scheme is a pair of colors which are on the opposite of each other on the color wheel.



795F5F



5F7979

# Split Complementary

Split-complementary colors differ from the complementary color scheme. The scheme consists of three colors, the original color and two neighbors of the complement color.



4F6973



795F5F



526B62

# Square

The Square scheme is like the rectangle color scheme, but the four colors are evenly spaced on the color wheel.



795F5F



666754



4D6B6C



636477

# Rectangle

The Rectangle color scheme consists of four colors that form a rectangle on the color wheel.



795F5F



726354



4D6B6C



546877



# Sweetspot

The Sweet Spot groups the original color and five complimentary colors.



795F5F



9E9595



795F79



4F4A4A



CFCFCF



4F4F4F



# Same Dimension

The Same Dimension uses a secret algorithm to generate beautiful new colors.



795F5F



9E7575



796C5F



3D3737



7D0000



FC0000



# Inverse Universe

The Inverse Universe completely reimagines the original color for something new.



5F7979



759E9E



5F6C79



373D3D



007D7D

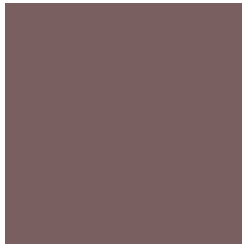


00FCFC



# Previews

## White Background



This preview shows how the Hex color 795F5F looks on a white background.

## Color Contrast Check

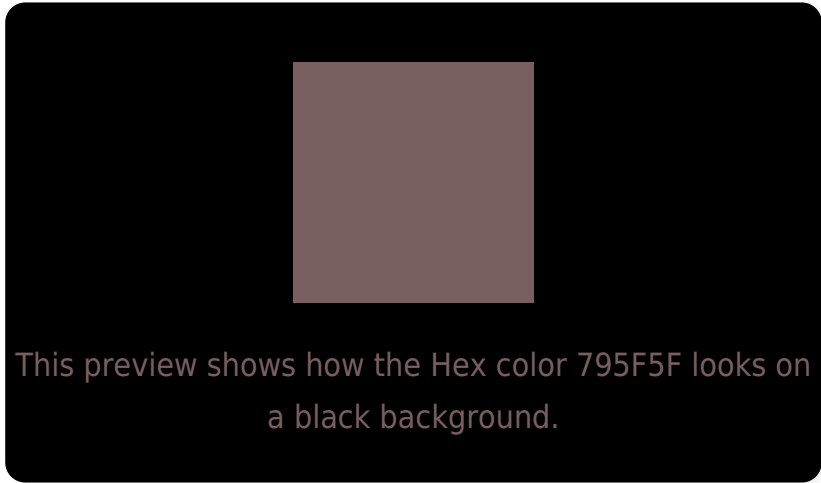
Large Text (above 18pt) WCAG AA ✓ Pass

Any Text WCAG AA ✓ Pass

Large Text (above 18pt) WCAG AAA ✓ Pass

Any Text WCAG AAA × Fail

# Black Background



## Color Contrast Check

Large Text (above 18pt) WCAG AA ✓ Pass

Any Text WCAG AA × Fail

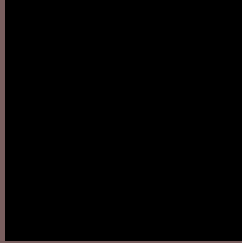
Large Text (above 18pt) WCAG AAA × Fail

Any Text WCAG AAA × Fail

If you want to check with other color combinations, try the [Color Contrast Checker](#).



## Hex 795F5F Background



This preview shows how black text looks on a background with the Hex color 795F5F.



This preview shows how white text looks on a background with the Hex color 795F5F.

# Color Blindness Simulation

Color vision deficiency is a very complex topic, and I could not describe the different causes any better than Wikipedia does, so if you want to learn more, you should check out their [article about color blindness](#).

## Dichromacy



**Original Color**  
795F5F

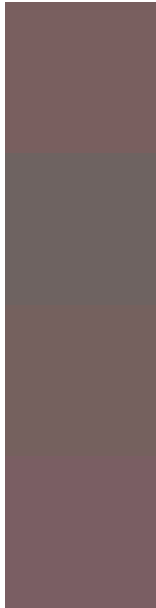
**Protanopia**  
686562

**Deuteranopia**  
72625E



**Tritanopia**  
7A5E65

# Trichromacy



**Original Color**  
795F5F

**Protanomaly**  
6E6361

**Deuteranomaly**  
75615E

**Tritanomaly**  
7A5E63

# Monochromacy



**Original Color**  
795F5F

**Achromatopsia**  
676767

**Achromatomaly**  
6E6464

# CSS Examples

## Text

The CSS property to change the color of the text to Hex 795F5F is called "color". The color property can be set on classes, ids or directly on the HTML element.

This example shows how text in the color #795F5F looks like.

```
.text, #text, p{  
    color:#795F5F  
}
```

If you want to add a text shadow in that color use the text-shadow property, you can generate a text shadow directly with our [CSS Text Shadow Generator](#).

Here you see how black text with a 4 pixel #795F5F colored shadow looks like.

```
.shadow{ text-shadow: 4px 4px 2px #795F5F
}
```

## Border

The CSS property to change the border of an element to Hex 795F5F is called "border". The border property can be set on classes, ids or directly on the HTML element.

This example shows the color as border, it can be applied via the CSS property "border" or "border-color".

```
.border, #border, table{ border:4px solid
#795F5F }
```

If only the border color should be changed use the property `border-color`.

```
.border{ border-color:#795F5F }
```

If you want to add a box shadow in that color use:

Here you see how a box with a 4 pixel #795F5F colored shadow looks like.

```
.boxshadow{ -moz-box-shadow:4px 4px 4px  
4px #795F5F; -webkit-box-shadow:4px 4px  
4px 4px #795F5F; box-shadow:4px 4px 4px  
4px #795F5F }
```

# Background

The CSS property to change the background color of an element to Hex 795F5F is called "background". The background property can be set on classes, ids or directly on the HTML element.

```
.background, #background, body{  
background:#795F5F }
```

If only the background color should be changed can be used:

```
.background{ background-color:#795F5F }
```

This example shows the color as background, it is applied via the CSS property "background".

To optimize and compress your CSS code, you can use our [online CSS compressor and optimizer](#) based on csstidy. If you want to create a linear or radial gradient as background or border, check our [CSS Gradient Generator](#).



Hey! You found this booklet interesting? Support Converting Colors with the new Membership Option!

The pro membership hides all ads, plus gives you double the colors in the color bucket, and more awesome pro features!

**[Learn more, Memberships starting at \\$2.50/m!](#)**

**Follow me  
on Twitter!**

@ConvertingColor