

Converting Colors

Hex(796B65)

Have a look what the booklet for
Hex(796B65) contains.

Hex(796B65)	3
<i>Conversions</i>	4
<i>Details</i>	6
<i>Harmonies</i>	11
<i>Previews</i>	23
<i>Color Blindness Simulation</i>	26
<i>CSS Examples</i>	29

Color

Hex(796B65)

Conversions

Conversions Part 1

Format	Color
Hex	796B65
RGB	121, 107, 101
RGB Percent	47%, 42%, 40%
CMY	0.5255, 0.5804, 0.6039
CMYK	0.00, 0.12, 0.17, 0.53
HSL	18°, 9%, 44%
HSV	18°, 17%, 47%
XYZ	15.4918, 15.5199, 14.4911
YIQ	110.5020, 10.2700, 1.1020

Conversions

Conversions Part 2

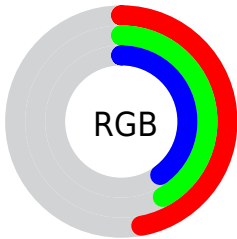
Format	Color
R_{YB}	121, 110, 101
Decimal	7957349
CIE Lab	46.34, 4.42, 5.37
CIE LCh	46, 6.956, 50.508
Yxy	15.5199, 0.3405, 0.3411
Android (android.graphics.Color)	4286147429 (0xFF796B65)
YUV	110.5020, -4.6845, 9.2067
Hunter-Lab	39.3953, 1.2515, 5.7677

Details

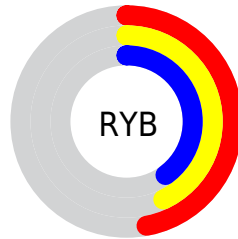
The Hex color **796B65** is a dark color, and the websafe version is hex **666666**. A complement of this color would be **657379**, and the grayscale version is **6F6F6F**.

A 20% lighter version of the original color is **AD9E98**, and **483C36** is the 20% darker color. If you saturate the color by 10%, you get **796359**, and if you desaturate by 10%, it is **797371**.

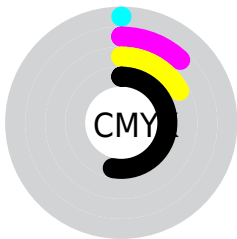
Distribution



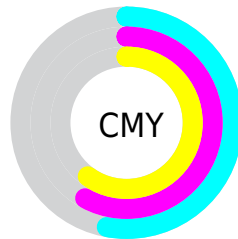
- Red (47%)
- Green (42%)
- Blue (40%)



- Red (47%)
- Yellow (43%)
- Blue (40%)



- Cyan (0%)
- Magenta (12%)
- Yellow (17%)
- Black (53%)



- Cyan (53%)
- Magenta (58%)
- Yellow (60%)

Brightness & Saturation Gradients

These gradients show how the Hex color 796B65 changes by changing the brightness by 10 percent. The first figure shows a shift by +10% for each color and the second figure -10%.

Similar to the brightness gradients but the following saturation gradients show a change of the Hex color 796B65 by changing the saturation by 10% instead.

 796B65

 796B65

FFFFFF

 60534D

 AD9E98

 483C36

 C9B9B3

 322621

 E5D5CE

 1D110A

 FFF1EA

 000000

 796B65

 796B65

 796359

 797371

 795A4D

 797C7D

 795241

 798489

■ 794935

■ 798D95

■ 794128

■ 7995A2

■ 79381C

■ 799EAE

■ 793010

■ 79A6BA

■ 792704

■ 79AFC6

■ 792400

■ 79B7D2

Harmonies

Analogous

The Analogous color harmony consists of three colors that are next to each other on the color wheel.



7B6A6A



796B65



756D62

Triad

The Triadic color harmony groups three colors that are evenly spaced from another and form a triangle on the color wheel.



796B65



62716C



6D6D79

Complementary

The Complementary color scheme is a pair of colors which are on the opposite of each other on the color wheel.



796B65



657379

Split Complementary

Split-complementary colors differ from the complementary color scheme. The scheme consists of three colors, the original color and two neighbors of the complement color.



666F79



796B65



5F7172

Square

The Square scheme is like the rectangle color scheme, but the four colors are evenly spaced on the color wheel.



796B65



687066



617077



746B75

Rectangle

The Rectangle color scheme consists of four colors that form a rectangle on the color wheel.



796B65



706E62



617077



6A6E79

Sweetspot

The Sweet Spot groups the original color and five complimentary colors.



796B65



9E9996



796573



4F4C4A



CFCFCF



4F4F4F

Same Dimension

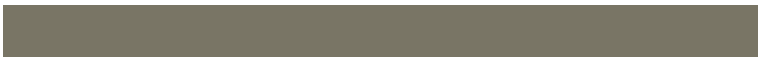
The Same Dimension uses a secret algorithm to generate beautiful new colors.



796B65



9E887E



797565



3D3937



7D2500



FC4C00

Inverse Universe

The Inverse Universe completely reimagines the original color for something new.



657379



7E959E



656979



373B3D



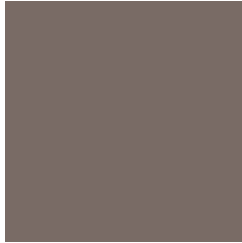
00577D



00B1FC

Previews

White Background



This preview shows how the Hex color 796B65 looks on a white background.

Color Contrast Check

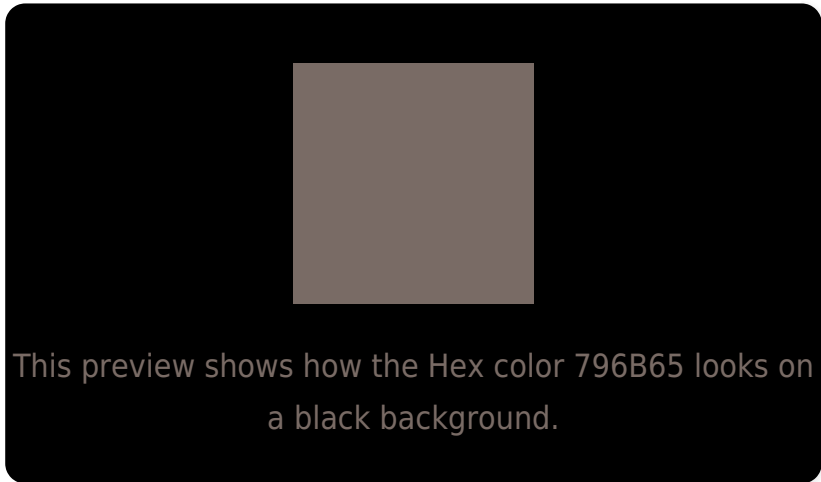
Large Text (above 18pt) WCAG AA ✓ Pass

Any Text WCAG AA ✓ Pass

Large Text (above 18pt) WCAG AAA ✓ Pass

Any Text WCAG AAA × Fail

Black Background



Color Contrast Check

Large Text (above 18pt) WCAG AA ✓ Pass

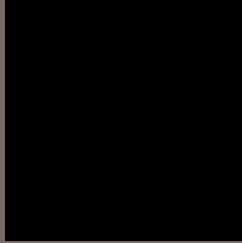
Any Text WCAG AA × Fail

Large Text (above 18pt) WCAG AAA × Fail

Any Text WCAG AAA × Fail

If you want to check with other color combinations, try the [Color Contrast Checker](#).

Hex 796B65 Background



This preview shows how black text looks on a background with the Hex color 796B65.

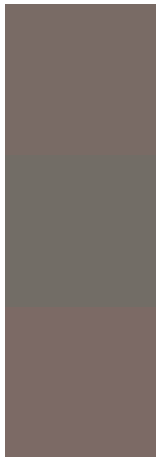


This preview shows how white text looks on a background with the Hex color 796B65.

Color Blindness Simulation

Color vision deficiency is a very complex topic, and I could not describe the different causes any better than Wikipedia does, so if you want to learn more, you should check out their [article about color blindness](#).

Dichromacy



Original Color
796B65

Protanopia
726D66

Deuteranopia
7C6A65



Tritanopia
7B6971

Trichromacy



Original Color

796B65

Protanomaly

756C66

Deuteranomaly

7B6A65

Tritanomaly

7A6A6D

Monochromacy



Original Color

796B65

Achromatopsia

6F6F6F

Achromatomaly

736E6B

CSS Examples

Text

The CSS property to change the color of the text to Hex 796B65 is called "color". The color property can be set on classes, ids or directly on the HTML element.

This example shows how text in the color #796B65 looks like.

```
.text, #text, p{  
    color:#796B65  
}
```

If you want to add a text shadow in that color use the text-shadow property, you can generate a text shadow directly with our [CSS Text Shadow Generator](#).

Here you see how black text with a 4 pixel #796B65 colored shadow looks like.

```
.shadow{ text-shadow: 4px 4px 2px #796B65
}
```

Border

The CSS property to change the border of an element to Hex 796B65 is called "border". The border property can be set on classes, ids or directly on the HTML element.

This example shows the color as border, it can be applied via the CSS property "border" or "border-color".

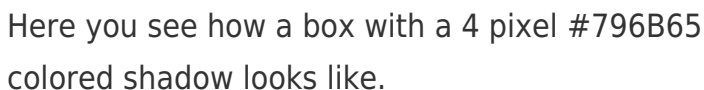
```
.border, #border, table{ border:4px solid
#796B65 }
```

If only the border color should be changed use the property `border-color`.

```
.border{ border-color:#796B65 }
```

If you want to add a box shadow in that color use:

Here you see how a box with a 4 pixel #796B65 colored shadow looks like.



```
.boxshadow{ -moz-box-shadow:4px 4px 4px  
4px #796B65; -webkit-box-shadow:4px 4px  
4px 4px #796B65; box-shadow:4px 4px 4px  
4px #796B65 }
```

Background

The CSS property to change the background color of an element to Hex 796B65 is called "background". The background property can be set on classes, ids or directly on the HTML element.

```
.background, #background, body{  
background:#796B65 }
```

If only the background color should be changed can be used:

```
.background{ background-color:#796B65 }
```

This example shows the color as background, it is applied via the CSS property "background".

To optimize and compress your CSS code, you can use our [online CSS compressor and optimizer](#) based on csstidy. If you want to create a linear or radial gradient as background or border, check our [CSS Gradient Generator](#).

Hey! You found this booklet interesting? Support Converting Colors with the new Membership Option!

The pro membership hides all ads, plus gives you double the colors in the color bucket, and more awesome pro features!

[Learn more, Memberships starting at \\$2.50/m!](#)

**Follow me
on Twitter!**

@ConvertingColor