

Converting Colors

Hex(7C666B)

Have a look what the booklet for
Hex(7C666B) contains.

Hex(7C666B)	3
<i>Conversions</i>	4
<i>Details</i>	6
<i>Harmonies</i>	11
<i>Previews</i>	23
<i>Color Blindness Simulation</i>	26
<i>CSS Examples</i>	29

Color

Hex(7C666B)

Conversions

Conversions Part 1

Format	Color
Hex	7C666B
RGB	124, 102, 107
RGB Percent	49%, 40%, 42%
CMY	0.5137, 0.6000, 0.5804
CMYK	0.00, 0.18, 0.14, 0.51
HSL	346°, 10%, 44%
HSV	346°, 18%, 49%
XYZ	15.7174, 14.8494, 15.9477
YIQ	109.1480, 11.5070, 6.2190

Conversions

Conversions Part 2

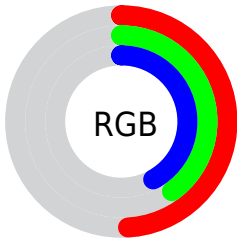
Format	Color
R_{YB}	124, 102, 107
Decimal	8152683
CIE Lab	45.43, 9.67, 0.48
CIE LCh	45, 9.682, 2.866
Yxy	14.8494, 0.3379, 0.3192
Android (android.graphics.Color)	4286342763 (0xFF7C666B)
YUV	109.1480, -1.0590, 13.0252
Hunter-Lab	38.5349, 5.3696, 2.4371

Details

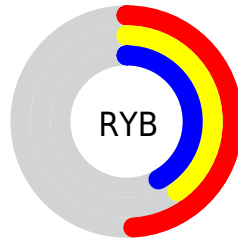
The Hex color **7C666B** is a dark color, and the websafe version is hex **666666**. A complement of this color would be **667C77**, and the grayscale version is **6D6D6D**.

A 20% lighter version of the original color is **B1999E**, and **4B373C** is the 20% darker color. If you saturate the color by 10%, you get **7C5A61**, and if you desaturate by 10%, it is **7C7275**.

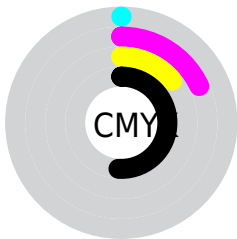
Distribution



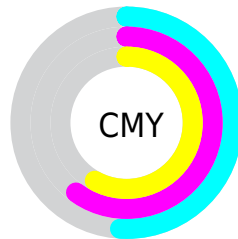
- Red (49%)
- Green (40%)
- Blue (42%)



- Red (49%)
- Yellow (40%)
- Blue (42%)



- Cyan (0%)
- Magenta (18%)
- Yellow (14%)
- Black (51%)



- Cyan (51%)
- Magenta (60%)
- Yellow (58%)

Brightness & Saturation Gradients

These gradients show how the Hex color 7C666B changes by changing the brightness by 10 percent. The first figure shows a shift by +10% for each color and the second figure -10%.

Similar to the brightness gradients but the following saturation gradients show a change of the Hex color 7C666B by changing the saturation by 10% instead.

 7C666B

 7C666B

FFFFFF

 634E53

 B1999E

 4B373C

 CCB4B9

 342226

 E9CFD5

 1F0C11

 FFECF1

 000000

 7C666B

 7C666B

 7C5A61

 7C7275

 7C4D58

 7C7F7E

 7C414E

 7C8B88

 7C3445

 7C9891

 7C283B

 7CA49B

 7C1C32

 7CB0A4

 7C0F28

 7CBDAE

 7C031E

 7CC9B8

 7C001C

 7CD6C1

Harmonies

Analogous

The Analogous color harmony consists of three colors that are next to each other on the color wheel.



776773



7C666B



7D6763

Triad

The Triadic color harmony groups three colors that are evenly spaced from another and form a triangle on the color wheel.



7C666B



686E5E



5B6E7A

Complementary

The Complementary color scheme is a pair of colors which are on the opposite of each other on the color wheel.



7C666B



667C77

Split Complementary

Split-complementary colors differ from the complementary color scheme. The scheme consists of three colors, the original color and two neighbors of the complement color.



577074



7C666B



5F7064

Square

The Square scheme is like the rectangle color scheme, but the four colors are evenly spaced on the color wheel.



7C666B



716B5B



59706C



646C7B

Rectangle

The Rectangle color scheme consists of four colors that form a rectangle on the color wheel.



7C666B



7A685F



59706C



596F78

Sweetspot

The Sweet Spot groups the original color and five complimentary colors.



7C666B



A1999A



77667C



524D4E



D1D1D1



525252

Same Dimension

The Same Dimension uses a secret algorithm to generate beautiful new colors.



7C666B



A17F87



7C6C66



3D3738



7D001C



FC0039

Inverse Universe

The Inverse Universe completely reimagines the original color for something new.



7C666B



A17F87



66767C



3D3738



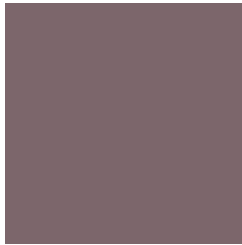
7D001C



FC0039

Previews

White Background



This preview shows how the Hex color 7C666B looks on a white background.

Color Contrast Check

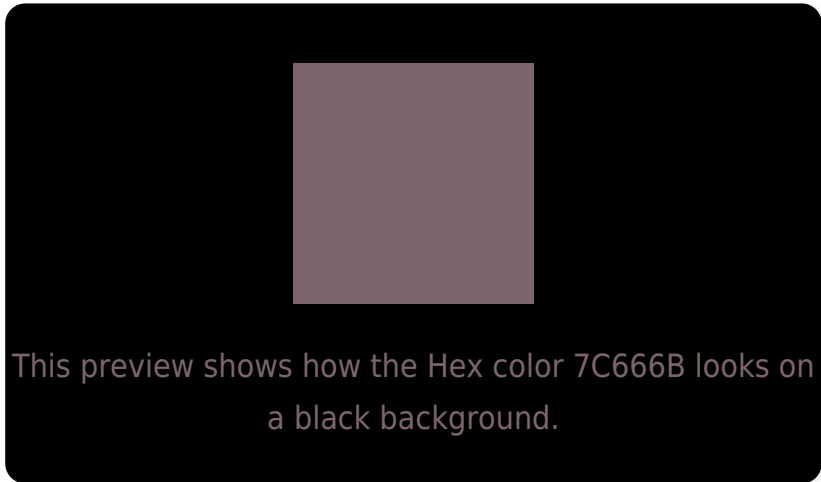
Large Text (above 18pt) WCAG AA ✓ Pass

Any Text WCAG AA ✓ Pass

Large Text (above 18pt) WCAG AAA ✓ Pass

Any Text WCAG AAA × Fail

Black Background



Color Contrast Check

Large Text (above 18pt) WCAG AA ✓ Pass

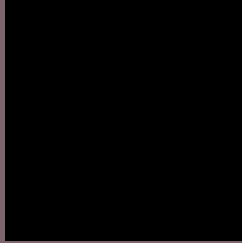
Any Text WCAG AA × Fail

Large Text (above 18pt) WCAG AAA × Fail

Any Text WCAG AAA × Fail

If you want to check with other color combinations, try the [Color Contrast Checker](#).

Hex 7C666B Background



This preview shows how black text looks on a background with the Hex color 7C666B.



This preview shows how white text looks on a background with the Hex color 7C666B.

Color Blindness Simulation

Color vision deficiency is a very complex topic, and I could not describe the different causes any better than Wikipedia does, so if you want to learn more, you should check out their [article about color blindness](#).

Dichromacy



Original Color


7C666B

Protanopia

6D6B6E

Deuteranopia

76686B



Tritanopia
7C666E

Trichromacy



Original Color
7C666B

Protanomaly
72696D

Deuteranomaly
78676B

Tritanomaly
7C666D

Monochromacy



Original Color
7C666B

Achromatopsia
6D6D6D

Achromatomaly
726A6C

CSS Examples

Text

The CSS property to change the color of the text to Hex 7C666B is called "color". The color property can be set on classes, ids or directly on the HTML element.

This example shows how text in the color #7C666B looks like.

```
.text, #text, p{  
    color:#7C666B  
}
```

If you want to add a text shadow in that color use the text-shadow property, you can generate a text shadow directly with our [CSS Text Shadow Generator](#).

Here you see how black text with a 4 pixel #7C666B colored shadow looks like.

```
.shadow{ text-shadow: 4px 4px 2px #7C666B
}
```

Border

The CSS property to change the border of an element to Hex 7C666B is called "border". The border property can be set on classes, ids or directly on the HTML element.

This example shows the color as border, it can be applied via the CSS property "border" or "border-color".

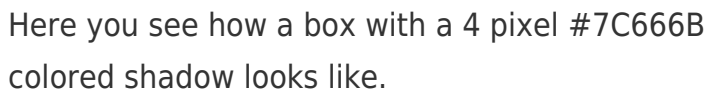
```
.border, #border, table{ border:4px solid
#7C666B }
```

If only the border color should be changed use the property `border-color`.

```
.border{ border-color:#7C666B }
```

If you want to add a box shadow in that color use:

Here you see how a box with a 4 pixel #7C666B colored shadow looks like.



```
.boxshadow{ -moz-box-shadow:4px 4px 4px  
4px #7C666B; -webkit-box-shadow:4px 4px  
4px 4px #7C666B; box-shadow:4px 4px 4px  
4px #7C666B }
```

Background

The CSS property to change the background color of an element to Hex 7C666B is called "background". The background property can be set on classes, ids or directly on the HTML element.

```
.background, #background, body{  
background:#7C666B }
```

If only the background color should be changed can be used:

```
.background{ background-color:#7C666B }
```

This example shows the color as background, it is applied via the CSS property "background".

To optimize and compress your CSS code, you can use our [online CSS compressor and optimizer](#) based on csstidy. If you want to create a linear or radial gradient as background or border, check our [CSS Gradient Generator](#).

Hey! You found this booklet interesting? Support Converting Colors with the new Membership Option!

The pro membership hides all ads, plus gives you double the colors in the color bucket, and more awesome pro features!

[Learn more, Memberships starting at \\$2.50/m!](#)

**Follow me
on Twitter!**

@ConvertingColor