

Converting Colors

Hex(7E4E4E)

Have a look what the booklet for
Hex(7E4E4E) contains.

Hex(7E4E4E)	3
<i>Conversions</i>	4
<i>Details</i>	6
<i>Harmonies</i>	11
<i>Previews</i>	23
<i>Color Blindness Simulation</i>	26
<i>CSS Examples</i>	29

Color

Hex(7E4E4E)

Conversions

Conversions Part 1

Format	Color
Hex	7E4E4E
RGB	126, 78, 78
RGB Percent	49%, 31%, 31%
CMY	0.5059, 0.6941, 0.6941
CMYK	0.00, 0.38, 0.38, 0.51
HSL	0°, 24%, 40%
HSV	0°, 38%, 49%
XYZ	12.7037, 10.4345, 8.5522
YIQ	92.3520, 28.6080, 10.1760

Conversions

Conversions Part 2

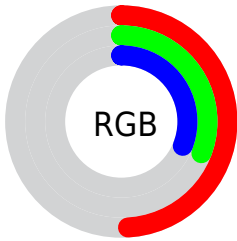
Format	Color
R_{YB}	126, 78, 78
Decimal	8277582
CIE Lab	38.61, 20.25, 8.51
CIE LCh	39, 21.964, 22.783
Yxy	10.4345, 0.4009, 0.3293
Android (android.graphics.Color)	4286467662 (0xFF7E4E4E)
YUV	92.3520, -7.0755, 29.5093
Hunter-Lab	32.3024, 13.6703, 6.9144

Details

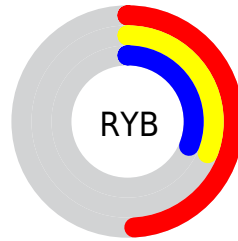
The Hex color **7E4E4E** is a dark color, and the websafe version is hex **996666**. A complement of this color would be **4E7E7E**, and the grayscale version is **5C5C5C**.

A 20% lighter version of the original color is **B4807F**, and **4B2022** is the 20% darker color. If you saturate the color by 10%, you get **7E4141**, and if you desaturate by 10%, it is **7E5B5B**.

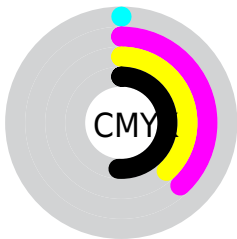
Distribution



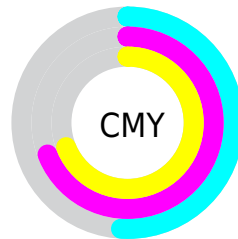
- Red (49%)
- Green (31%)
- Blue (31%)



- Red (49%)
- Yellow (31%)
- Blue (31%)



- Cyan (0%)
- Magenta (38%)
- Yellow (38%)
- Black (51%)



- Cyan (51%)
- Magenta (69%)
- Yellow (69%)

Brightness & Saturation Gradients

These gradients show how the Hex color 7E4E4E changes by changing the brightness by 10 percent. The first figure shows a shift by +10% for each color and the second figure -10%.

Similar to the brightness gradients but the following saturation gradients show a change of the Hex color 7E4E4E by changing the saturation by 10% instead.



7E4E4E



7E4E4E

FFFFFF



643737



B4807F



4B2022



D09A99



330B0C



EDB5B4



1C0001



FFD0CF



000000



FFEDEB



7E4E4E



7E4E4E



7E4141



7E5B5B



7E3535



7E6767

 7E2828

 7E7474

 7E1C1C

 7E8080

 7E0F0F

 7E8D8D

 7E0202

 7E9A9A

 7E0000

 7EA6A6

 7EB3B3

 7EBFBF

Harmonies

Analogous

The Analogous color harmony consists of three colors that are next to each other on the color wheel.



7B4E60



7E4E4E



78523F

Triad

The Triadic color harmony groups three colors that are evenly spaced from another and form a triangle on the color wheel.



7E4E4E



446245



3B5E7E

Complementary

The Complementary color scheme is a pair of colors which are on the opposite of each other on the color wheel.



7E4E4E



4E7E7E

Split Complementary

Split-complementary colors differ from the complementary color scheme. The scheme consists of three colors, the original color and two neighbors of the complement color.



216277



7E4E4E



2F6456

Square

The Square scheme is like the rectangle color scheme, but the four colors are evenly spaced on the color wheel.



7E4E4E



595E3A



1C6468



57587C

Rectangle

The Rectangle color scheme consists of four colors that form a rectangle on the color wheel.



7E4E4E



705639



1C6468



32607D

Sweetspot

The Sweet Spot groups the original color and five complimentary colors.



7E4E4E



A39191



7E4E7E



524747



D1D1D1



525252

Same Dimension

The Same Dimension uses a secret algorithm to generate beautiful new colors.



7E4E4E



A35858



7E664E



403939



800000



000000

Inverse Universe

The Inverse Universe completely reimagines the original color for something new.



4E7E7E



58A3A3



4E667E



394040



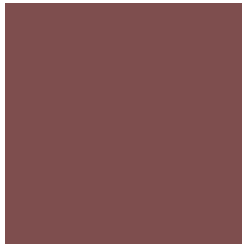
008080



000000

Previews

White Background



This preview shows how the Hex color 7E4E4E looks on a white background.

Color Contrast Check

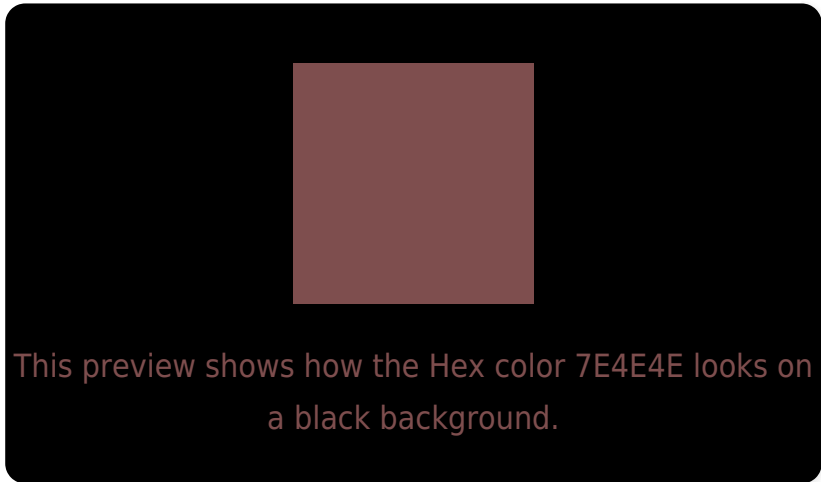
Large Text (above 18pt) WCAG AA ✓ Pass

Any Text WCAG AA ✓ Pass

Large Text (above 18pt) WCAG AAA ✓ Pass

Any Text WCAG AAA × Fail

Black Background



Color Contrast Check

Large Text (above 18pt) WCAG AA ✓ Pass

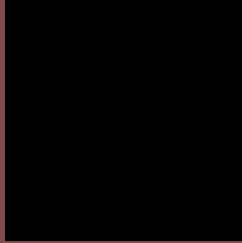
Any Text WCAG AA × Fail

Large Text (above 18pt) WCAG AAA × Fail

Any Text WCAG AAA × Fail

If you want to check with other color combinations, try the [Color Contrast Checker](#).

Hex 7E4E4E Background



This preview shows how black text looks on a background with the Hex color 7E4E4E.



This preview shows how white text looks on a background with the Hex color 7E4E4E.

Color Blindness Simulation

Color vision deficiency is a very complex topic, and I could not describe the different causes any better than Wikipedia does, so if you want to learn more, you should check out their [article about color blindness](#).

Dichromacy



Original Color
7E4E4E

Protanopia
5F5B55

Deuteranopia
69584C



Tritanopia
7E4D53

Trichromacy



Original Color

7E4E4E

Protanomaly

6A5652

Deuteranomaly

71544D

Tritanomaly

7E4D51

Monochromacy



Original Color

7E4E4E

Achromatopsia

5C5C5C

Achromatomaly

685757

CSS Examples

Text

The CSS property to change the color of the text to Hex 7E4E4E is called "color". The color property can be set on classes, ids or directly on the HTML element.

This example shows how text in the color #7E4E4E looks like.

```
.text, #text, p{  
    color:#7E4E4E  
}
```

If you want to add a text shadow in that color use the text-shadow property, you can generate a text shadow directly with our [CSS Text Shadow Generator](#).

Here you see how black text with a 4 pixel #7E4E4E colored shadow looks like.

```
.shadow{ text-shadow: 4px 4px 2px #7E4E4E
}
```

Border

The CSS property to change the border of an element to Hex 7E4E4E is called "border". The border property can be set on classes, ids or directly on the HTML element.

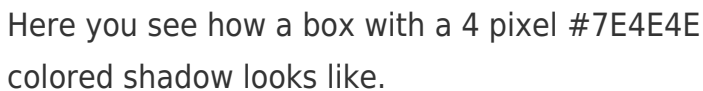
This example shows the color as border, it can be applied via the CSS property "border" or "border-color".

```
.border, #border, table{ border:4px solid
#7E4E4E }
```

If only the border color should be changed use the property `border-color`.

```
.border{ border-color:#7E4E4E }
```

If you want to add a box shadow in that color use:



Here you see how a box with a 4 pixel #7E4E4E colored shadow looks like.

```
.boxshadow{ -moz-box-shadow:4px 4px 4px  
4px #7E4E4E; -webkit-box-shadow:4px 4px  
4px 4px #7E4E4E; box-shadow:4px 4px 4px  
4px #7E4E4E }
```

Background

The CSS property to change the background color of an element to Hex 7E4E4E is called "background". The background property can be set on classes, ids or directly on the HTML element.

```
.background, #background, body{  
background:#7E4E4E }
```

If only the background color should be changed can be used:

```
.background{ background-color:#7E4E4E }
```

This example shows the color as background, it is applied via the CSS property "background".

To optimize and compress your CSS code, you can use our [online CSS compressor and optimizer](#) based on csstidy. If you want to create a linear or radial gradient as background or border, check our [CSS Gradient Generator](#).

Hey! You found this booklet interesting? Support Converting Colors with the new Membership Option!

The pro membership hides all ads, plus gives you double the colors in the color bucket, and more awesome pro features!

[Learn more, Memberships starting at \\$2.50/m!](#)

**Follow me
on Twitter!**

@ConvertingColor