

# Converting Colors

Hex(7E5E6D)

Have a look what the booklet for  
Hex(7E5E6D) contains.

<b>Hex(7E5E6D)</b> .....	3
<b><i>Conversions</i></b> .....	4
<b><i>Details</i></b> .....	6
<b><i>Harmonies</i></b> .....	11
<b><i>Previews</i></b> .....	23
<b><i>Color Blindness Simulation</i></b> .....	26
<b><i>CSS Examples</i></b> .....	29

# Color

**Hex(7E5E6D)**

# Conversions

## Conversions Part 1

<b>Format</b>	<b>Color</b>
Hex	7E5E6D
RGB	126, 94, 109
RGB Percent	49%, 37%, 43%
CMY	0.5059, 0.6314, 0.5725
CMYK	0.00, 0.25, 0.13, 0.51
HSL	332°, 15%, 43%
HSV	332°, 25%, 49%
XYZ	15.3672, 13.5452, 16.2725
YIQ	105.2780, 14.2570, 11.4490

# Conversions

## Conversions Part 2

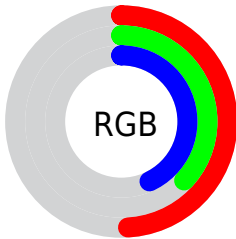
<b>Format</b>	<b>Color</b>
<b>R<sub>YB</sub></b>	126, 94, 109
Decimal	8281709
CIE <sub>Lab</sub>	43.57, 15.61, -3.42
CIE <sub>LCh</sub>	44, 15.977, 347.629
Yxy	13.5452, 0.3401, 0.2998
Android (android.graphics.Color)	4286471789 (0xFF7E5E6D)
YUV	105.2780, 1.8349, 18.1732
Hunter-Lab	36.8037, 10.1252, -0.4521

# Details

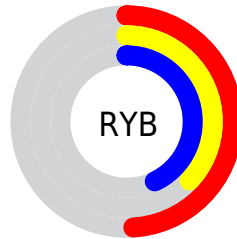
The Hex color **7E5E6D** is a dark color, and the websafe version is hex **996666**. A complement of this color would be **5E7E6F**, and the grayscale version is **696969**.

A 20% lighter version of the original color is **B391A0**, and **4C303E** is the 20% darker color. If you saturate the color by 10%, you get **7E5166**, and if you desaturate by 10%, it is **7E6B74**.

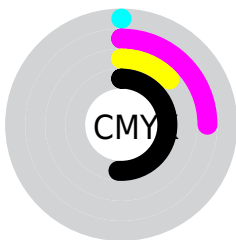
# Distribution



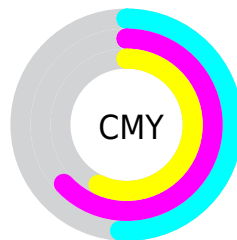
- Red (49%)
- Green (37%)
- Blue (43%)



- Red (49%)
- Yellow (37%)
- Blue (43%)



- Cyan (0%)
- Magenta (25%)
- Yellow (13%)
- Black (51%)



- Cyan (51%)
- Magenta (63%)
- Yellow (57%)

# Brightness & Saturation Gradients

These gradients show how the Hex color 7E5E6D changes by changing the brightness by 10 percent. The first figure shows a shift by +10% for each color and the second figure -10%.

Similar to the brightness gradients but the following saturation gradients show a change of the Hex color 7E5E6D by changing the saturation by 10% instead.



7E5E6D

7E5E6D

FFFFFF

654655

B391A0

4C303E

CFABBB

351A28

EBC7D7

210113

FFE3F4

000000

7E5E6D

7E5E6D

7E5166

7E6B74

7E4560

7E777A

7E3859

7E8481

 7E2C52

 7E9088

 7E1F4C

 7E9D8E

 7E1245

 7EAA95

 7E063E

 7EB69C

 7E003B

 7EC3A3

 7ECFA9

# Harmonies

## Analogous

The Analogous color harmony consists of three colors that are next to each other on the color wheel.



736179



7E5E6D



825E60

# Triad

The Triadic color harmony groups three colors that are evenly spaced from another and form a triangle on the color wheel.



7E5E6D



69694E



436D7A

# Complementary

The Complementary color scheme is a pair of colors which are on the opposite of each other on the color wheel.



7E5E6D



5E7E6F

# Split Complementary

Split-complementary colors differ from the complementary color scheme. The scheme consists of three colors, the original color and two neighbors of the complement color.



426E6E



7E5E6D



5A6C55

# Square

The Square scheme is like the rectangle color scheme, but the four colors are evenly spaced on the color wheel.



7E5E6D



76644D



4B6E61



506A80

# Rectangle

The Rectangle color scheme consists of four colors that form a rectangle on the color wheel.



7E5E6D



815F57



4B6E61



426E77



# Sweetspot

The Sweet Spot groups the original color and five complimentary colors.



7E5E6D



A3969C



6F5E7E



52494D



D1D1D1



525252



# Same Dimension

The Same Dimension uses a secret algorithm to generate beautiful new colors.



7E5E6D



A37289



7E5F5E



40393C



80003C



000000



# Inverse Universe

The Inverse Universe completely reimagines the original color for something new.



7E5E6D



A37289



5E7D7E



40393C



80003C

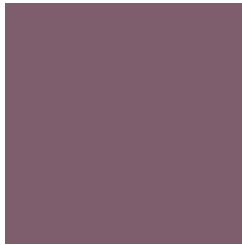


000000



# Previews

## White Background



This preview shows how the Hex color 7E5E6D looks on a white background.

## Color Contrast Check

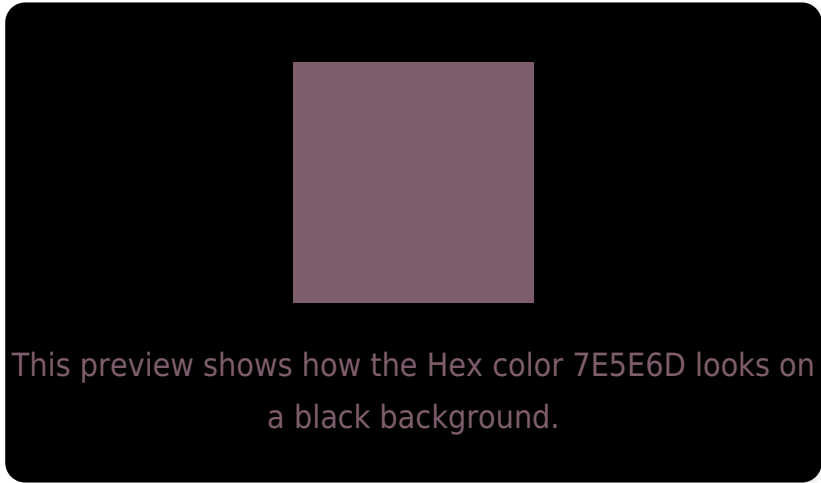
Large Text (above 18pt) WCAG AA ✓ Pass

Any Text WCAG AA ✓ Pass

Large Text (above 18pt) WCAG AAA ✓ Pass

Any Text WCAG AAA × Fail

# Black Background



## Color Contrast Check

Large Text (above 18pt) WCAG AA ✓ Pass

Any Text WCAG AA × Fail

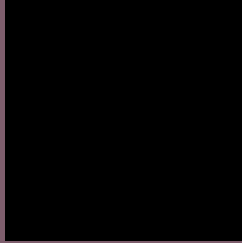
Large Text (above 18pt) WCAG AAA × Fail

Any Text WCAG AAA × Fail

If you want to check with other color combinations, try the [Color Contrast Checker](#).



## Hex 7E5E6D Background



This preview shows how black text looks on a background with the Hex color 7E5E6D.



This preview shows how white text looks on a background with the Hex color 7E5E6D.

# Color Blindness Simulation

Color vision deficiency is a very complex topic, and I could not describe the different causes any better than Wikipedia does, so if you want to learn more, you should check out their [article about color blindness](#).

## Dichromacy



**Original Color**  
7E5E6D

**Protanopia**  
666672

**Deuteranopia**  
6F646C



**Tritanopia**  
7D5F66

# Trichromacy



**Original Color**  
7E5E6D

**Protanomaly**  
6F6370

**Deuteranomaly**  
74626C

**Tritanomaly**  
7D5F69

# Monochromacy



**Original Color**  
7E5E6D

**Achromatopsia**  
696969

**Achromatomaly**  
71656A

# CSS Examples

## Text

The CSS property to change the color of the text to Hex 7E5E6D is called "color". The color property can be set on classes, ids or directly on the HTML element.

This example shows how text in the color #7E5E6D looks like.

```
.text, #text, p{  
    color:#7E5E6D  
}
```

If you want to add a text shadow in that color use the text-shadow property, you can generate a text shadow directly with our [CSS Text Shadow Generator](#).

Here you see how black text with a 4 pixel #7E5E6D colored shadow looks like.

```
.shadow{ text-shadow: 4px 4px 2px #7E5E6D
}
```

## Border

The CSS property to change the border of an element to Hex 7E5E6D is called "border". The border property can be set on classes, ids or directly on the HTML element.

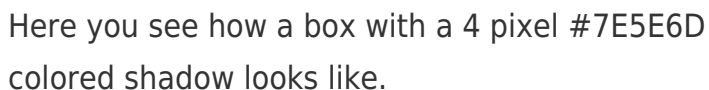
This example shows the color as border, it can be applied via the CSS property "border" or "border-color".

```
.border, #border, table{ border:4px solid
#7E5E6D }
```

If only the border color should be changed use the property `border-color`.

```
.border{ border-color:#7E5E6D }
```

If you want to add a box shadow in that color use:



Here you see how a box with a 4 pixel #7E5E6D colored shadow looks like.

```
.boxshadow{ -moz-box-shadow:4px 4px 4px  
4px #7E5E6D; -webkit-box-shadow:4px 4px  
4px 4px #7E5E6D; box-shadow:4px 4px 4px  
4px #7E5E6D }
```

# Background

The CSS property to change the background color of an element to Hex 7E5E6D is called "background". The background property can be set on classes, ids or directly on the HTML element.

```
.background, #background, body{  
background:#7E5E6D }
```

If only the background color should be changed can be used:

```
.background{ background-color:#7E5E6D }
```

This example shows the color as background, it is applied via the CSS property "background".

To optimize and compress your CSS code, you can use our [online CSS compressor and optimizer](#) based on csstidy. If you want to create a linear or radial gradient as background or border, check our [CSS Gradient Generator](#).



Hey! You found this booklet interesting? Support Converting Colors with the new Membership Option!

The pro membership hides all ads, plus gives you double the colors in the color bucket, and more awesome pro features!

**[Learn more, Memberships starting at \\$2.50/m!](#)**

**Follow me  
on Twitter!**

@ConvertingColor