

# Converting Colors

Hex(80696D)

Have a look what the booklet for  
Hex(80696D) contains.

<b>Hex(80696D)</b> .....	3
<b><i>Conversions</i></b> .....	4
<b><i>Details</i></b> .....	6
<b><i>Harmonies</i></b> .....	11
<b><i>Previews</i></b> .....	23
<b><i>Color Blindness Simulation</i></b> .....	26
<b><i>CSS Examples</i></b> .....	29

**Color**

**Hex(80696D)**

# Conversions

## Conversions Part 1

<b>Format</b>	<b>Color</b>
Hex	80696D
RGB	128, 105, 109
RGB Percent	50%, 41%, 43%
CMY	0.4980, 0.5882, 0.5725
CMYK	0.00, 0.18, 0.15, 0.50
HSL	350°, 10%, 46%
HSV	350°, 18%, 50%
XYZ	16.7140, 15.7965, 16.6361
YIQ	112.3330, 12.4240, 6.1200

# Conversions

## Conversions Part 2

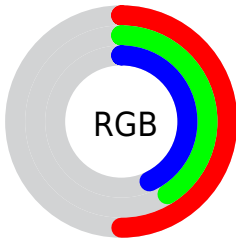
<b>Format</b>	<b>Color</b>
<b>R<sub>YB</sub></b>	128, 105, 109
Decimal	8415597
CIE <sub>Lab</sub>	46.71, 9.84, 1.19
CIE <sub>LCh</sub>	47, 9.910, 6.920
Yxy	15.7965, 0.3401, 0.3214
Android (android.graphics.Color)	4286605677 (0xFF80696D)
YUV	112.3330, -1.6432, 13.7400
Hunter-Lab	39.7448, 5.5117, 3.0041

# Details

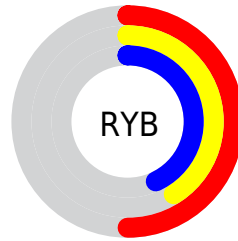
The Hex color **80696D** is a dark color, and the websafe version is hex **666666**. A complement of this color would be **69807C**, and the grayscale version is **707070**.

A 20% lighter version of the original color is **B59CA0**, and **4E3A3E** is the 20% darker color. If you saturate the color by 10%, you get **805C62**, and if you desaturate by 10%, it is **807678**.

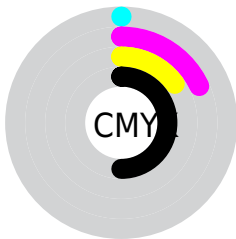
# Distribution



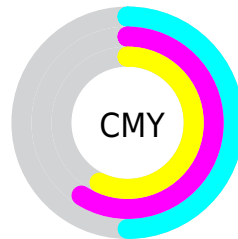
- Red (50%)
- Green (41%)
- Blue (43%)



- Red (50%)
- Yellow (41%)
- Blue (43%)



- Cyan (0%)
- Magenta (18%)
- Yellow (15%)
- Black (50%)



- Cyan (50%)
- Magenta (59%)
- Yellow (57%)

# Brightness & Saturation Gradients

These gradients show how the Hex color 80696D changes by changing the brightness by 10 percent. The first figure shows a shift by +10% for each color and the second figure -10%.

Similar to the brightness gradients but the following saturation gradients show a change of the Hex color 80696D by changing the saturation by 10% instead.



80696D

80696D

FFFFFF

675155

B59CA0

4E3A3E

D1B7BB

372428

EDD3D7

221013

FFEFF4

000000

80696D

80696D

805C62

807678

804F58

808382

80434D

808F8D

803643

809C97

802938

80A9A2

801C2E

80B6AC

800F23

80C3B7

800318

80CFC2

800016

80DCCC

# Harmonies

## Analogous

The Analogous color harmony consists of three colors that are next to each other on the color wheel.



7B6A75



80696D



806A65

# Triad

The Triadic color harmony groups three colors that are evenly spaced from another and form a triangle on the color wheel.



80696D



6A7161



5F717E

# Complementary

The Complementary color scheme is a pair of colors which are on the opposite of each other on the color wheel.



80696D



69807C

# Split Complementary

Split-complementary colors differ from the complementary color scheme. The scheme consists of three colors, the original color and two neighbors of the complement color.



5A7378



80696D



617368

# Square

The Square scheme is like the rectangle color scheme, but the four colors are evenly spaced on the color wheel.



80696D



736F5E



5B7470



686F7F

# Rectangle

The Rectangle color scheme consists of four colors that form a rectangle on the color wheel.



80696D



7D6B61



5B7470



5C727C



# Sweetspot

The Sweet Spot groups the original color and five complimentary colors.



80696D



A69D9F



7C6980



544F50



D4D4D4



545454



# Same Dimension

The Same Dimension uses a secret algorithm to generate beautiful new colors.



80696D



A68188



807069



40393A



800016



000000



# Inverse Universe

The Inverse Universe completely reimagines the original color for something new.



80696D



A68188



697980



40393A



800016

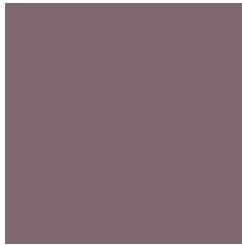


000000



# Previews

## White Background



This preview shows how the Hex color 80696D looks on a white background.

## Color Contrast Check

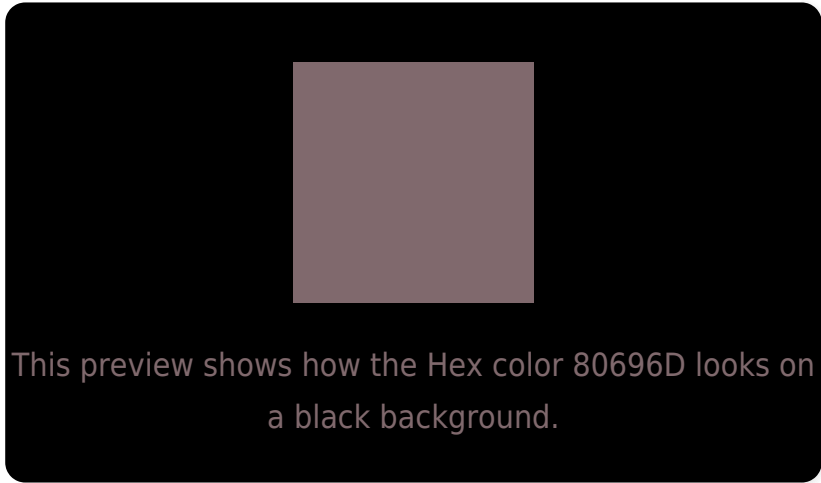
Large Text (above 18pt) WCAG AA ✓ Pass

Any Text WCAG AA ✓ Pass

Large Text (above 18pt) WCAG AAA ✓ Pass

Any Text WCAG AAA × Fail

# Black Background



## Color Contrast Check

Large Text (above 18pt) WCAG AA ✓ Pass

Any Text WCAG AA × Fail

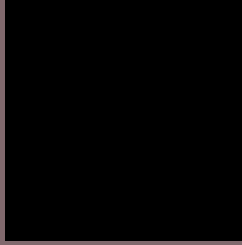
Large Text (above 18pt) WCAG AAA × Fail

Any Text WCAG AAA × Fail

If you want to check with other color combinations, try the [Color Contrast Checker](#).



## Hex 80696D Background



This preview shows how black text looks on a background with the Hex color 80696D.



This preview shows how white text looks on a background with the Hex color 80696D.

# Color Blindness Simulation

Color vision deficiency is a very complex topic, and I could not describe the different causes any better than Wikipedia does, so if you want to learn more, you should check out their [article about color blindness](#).


## Dichromacy



**Original Color**  
80696D

**Protanopia**  
706E70

**Deuteranopia**  
7A6B6D



**Tritanopia**  
806871

# Trichromacy



**Original Color**  
80696D

**Protanomaly**  
766C6F

**Deuteranomaly**  
7C6A6D

**Tritanomaly**  
806870

# Monochromacy



**Original Color**  
80696D

**Achromatopsia**  
707070

**Achromatomaly**  
766D6F

# CSS Examples

## Text

The CSS property to change the color of the text to Hex 80696D is called "color". The color property can be set on classes, ids or directly on the HTML element.

This example shows how text in the color #80696D looks like.

```
.text, #text, p{  
    color:#80696D  
}
```

If you want to add a text shadow in that color use the text-shadow property, you can generate a text shadow directly with our [CSS Text Shadow Generator](#).

Here you see how black text with a 4 pixel #80696D colored shadow looks like.

```
.shadow{ text-shadow: 4px 4px 2px #80696D  
}
```

## Border

The CSS property to change the border of an element to Hex 80696D is called "border". The border property can be set on classes, ids or directly on the HTML element.

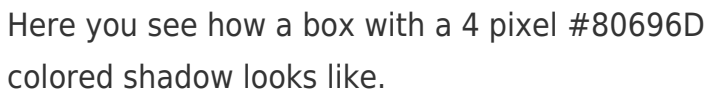
This example shows the color as border, it can be applied via the CSS property "border" or "border-color".

```
.border, #border, table{ border:4px solid  
#80696D }
```

If only the border color should be changed use the property `border-color`.

```
.border{ border-color:#80696D }
```

If you want to add a box shadow in that color use:



Here you see how a box with a 4 pixel #80696D colored shadow looks like.

```
.boxshadow{ -moz-box-shadow:4px 4px 4px  
4px #80696D; -webkit-box-shadow:4px 4px  
4px 4px #80696D; box-shadow:4px 4px 4px  
4px #80696D }
```

# Background

The CSS property to change the background color of an element to Hex 80696D is called "background". The background property can be set on classes, ids or directly on the HTML element.

```
.background, #background, body{  
background:#80696D }
```

If only the background color should be changed can be used:

```
.background{ background-color:#80696D }
```

This example shows the color as background, it is applied via the CSS property "background".

To optimize and compress your CSS code, you can use our [online CSS compressor and optimizer](#) based on csstidy. If you want to create a linear or radial gradient as background or border, check our [CSS Gradient Generator](#).



Hey! You found this booklet interesting? Support Converting Colors with the new Membership Option!

The pro membership hides all ads, plus gives you double the colors in the color bucket, and more awesome pro features!

**[Learn more, Memberships starting at \\$2.50/m!](#)**

**Follow me  
on Twitter!**

@ConvertingColor