

# Converting Colors

Hex(827472)

Have a look what the booklet for  
Hex(827472) contains.

<b>Hex(827472)</b> .....	3
<b><i>Conversions</i></b> .....	4
<b><i>Details</i></b> .....	6
<b><i>Harmonies</i></b> .....	11
<b><i>Previews</i></b> .....	23
<b><i>Color Blindness Simulation</i></b> .....	26
<b><i>CSS Examples</i></b> .....	29

# Color

Hex(827472)

# Conversions

## Conversions Part 1

<b>Format</b>	<b>Color</b>
Hex	827472
RGB	130, 116, 114
RGB Percent	51%, 45%, 45%
CMY	0.4902, 0.5451, 0.5529
CMYK	0.00, 0.11, 0.12, 0.49
HSL	7°, 7%, 48%
HSV	7°, 12%, 51%
XYZ	18.4886, 18.4515, 18.5066
YIQ	119.9580, 8.9860, 2.3460

# Conversions

## Conversions Part 2

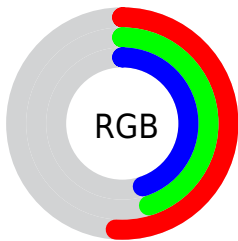
<b>Format</b>	<b>Color</b>
<b>R<sub>YB</sub></b>	130, 116, 114
Decimal	8549490
CIE <sub>Lab</sub>	50.04, 5.05, 3.07
CIE <sub>LCh</sub>	50, 5.916, 31.310
Yxy	18.4515, 0.3334, 0.3328
Android (android.graphics.Color)	4286739570 (0xFF827472)
YUV	119.9580, -2.9373, 8.8068
Hunter-Lab	42.9552, 1.6574, 4.5244

# Details

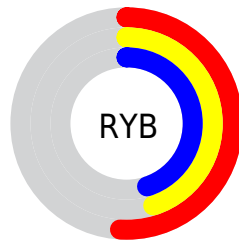
The Hex color **827472** is a dark color, and the websafe version is hex **666666**. A complement of this color would be **728082**, and the grayscale version is **787878**.

A 20% lighter version of the original color is **B7A8A6**, and **514442** is the 20% darker color. If you saturate the color by 10%, you get **826965**, and if you desaturate by 10%, it is **827F7F**.

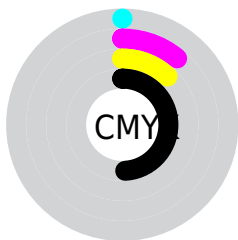
# Distribution



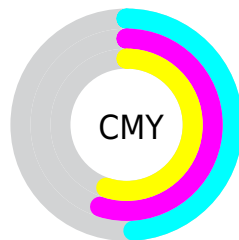
- Red (51%)
- Green (45%)
- Blue (45%)



- Red (51%)
- Yellow (45%)
- Blue (45%)



- Cyan (0%)
- Magenta (11%)
- Yellow (12%)
- Black (49%)



- Cyan (49%)
- Magenta (55%)
- Yellow (55%)

# Brightness & Saturation Gradients

These gradients show how the Hex color 827472 changes by changing the brightness by 10 percent. The first figure shows a shift by +10% for each color and the second figure -10%.

Similar to the brightness gradients but the following saturation gradients show a change of the Hex color 827472 by changing the saturation by 10% instead.





827472



827472

FFFFFF



695B5A



B7A8A6



514442



D3C3C1



392E2C



EFDFFD



241918



FFFCF9



0D0000



000000



827472



827472



826965



827F7F



825D58



828B8C

82524B

829699

82463E

82A2A6

823B31

82ADB3

823024

82B8C0

822417

82C4CD

82190A

82CFDA

821000

82DAE7

# Harmonies

## Analogous

The Analogous color harmony consists of three colors that are next to each other on the color wheel.



817477



827472



80756E

# Triad

The Triadic color harmony groups three colors that are evenly spaced from another and form a triangle on the color wheel.



827472



707A72



727781

# Complementary

The Complementary color scheme is a pair of colors which are on the opposite of each other on the color wheel.



827472



728082

# Split Complementary

Split-complementary colors differ from the complementary color scheme. The scheme consists of three colors, the original color and two neighbors of the complement color.



6D7980



827472



6C7A77

# Square

The Square scheme is like the rectangle color scheme, but the four colors are evenly spaced on the color wheel.



827472



75786E



6B7A7C



787680

# Rectangle

The Rectangle color scheme consists of four colors that form a rectangle on the color wheel.



827472



7D766D



6B7A7C



707881



# Sweetspot

The Sweet Spot groups the original color and five complimentary colors.



827472



A8A2A2



827280



545050



D4D4D4



545454



# Same Dimension

The Same Dimension uses a secret algorithm to generate beautiful new colors.



827472



A8928F



827C72



403A39



801000



000000



# Inverse Universe

The Inverse Universe completely reimagines the original color for something new.



728082



8FA5A8



727882



393F40



007080

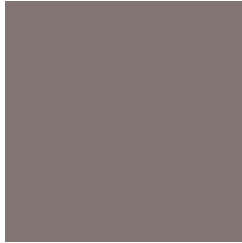


000000



# Previews

## White Background



This preview shows how the Hex color 827472 looks on a white background.

## Color Contrast Check

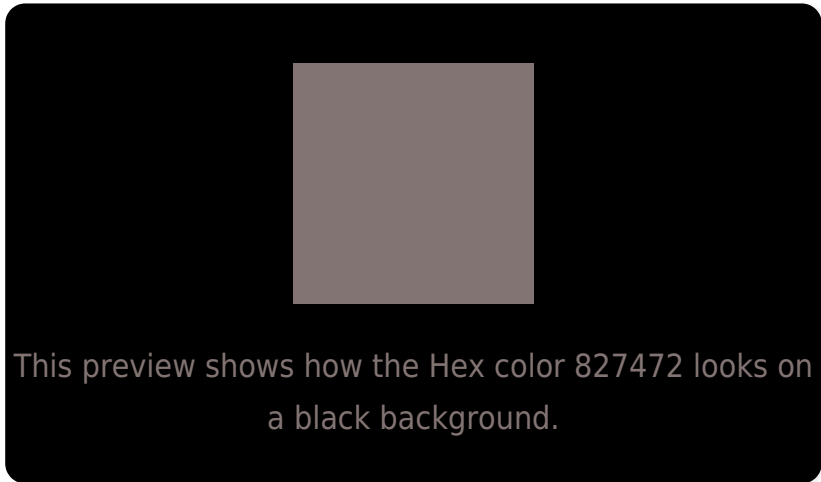
Large Text (above 18pt) WCAG AA ✓ Pass

Any Text WCAG AA × Fail

Large Text (above 18pt) WCAG AAA × Fail

Any Text WCAG AAA × Fail

# Black Background



## Color Contrast Check

Large Text (above 18pt) WCAG AA ✓ Pass

Any Text WCAG AA ✓ Pass

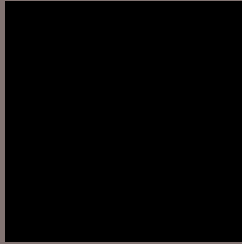
Large Text (above 18pt) WCAG AAA ✓ Pass

Any Text WCAG AAA × Fail

If you want to check with other color combinations, try the [Color Contrast Checker](#).



## Hex 827472 Background



This preview shows how black text looks on a background with the Hex color 827472.

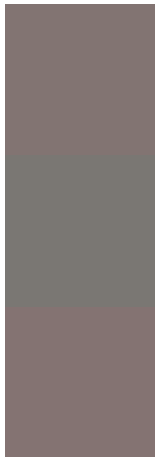


This preview shows how white text looks on a background with the Hex color 827472.

# Color Blindness Simulation

Color vision deficiency is a very complex topic, and I could not describe the different causes any better than Wikipedia does, so if you want to learn more, you should check out their [article about color blindness](#).

## Dichromacy



**Original Color**  
827472

**Protanopia**  
7A7773

**Deuteranopia**  
847372



**Tritanopia**  
83737C

# Trichromacy



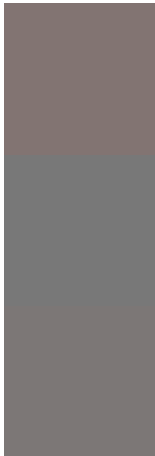
**Original Color**  
827472

**Protanomaly**  
7D7673

**Deuteranomaly**  
837372

**Tritanomaly**  
837378

# Monochromacy



**Original Color**  
827472

**Achromatopsia**  
787878

**Achromatomaly**  
7C7776

# CSS Examples

## Text

The CSS property to change the color of the text to Hex 827472 is called "color". The color property can be set on classes, ids or directly on the HTML element.

This example shows how text in the color #827472 looks like.

```
.text, #text, p{  
    color:#827472  
}
```

If you want to add a text shadow in that color use the text-shadow property, you can generate a text shadow directly with our [CSS Text Shadow Generator](#).

Here you see how black text with a 4 pixel #827472 colored shadow looks like.

```
.shadow{ text-shadow: 4px 4px 2px #827472
}
```

## Border

The CSS property to change the border of an element to Hex 827472 is called "border". The border property can be set on classes, ids or directly on the HTML element.

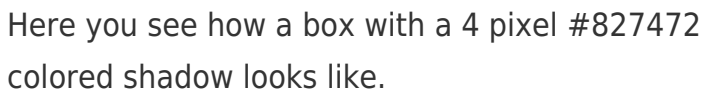
This example shows the color as border, it can be applied via the CSS property "border" or "border-color".

```
.border, #border, table{ border:4px solid
#827472 }
```

If only the border color should be changed use the property `border-color`.

```
.border{ border-color:#827472 }
```

If you want to add a box shadow in that color use:



Here you see how a box with a 4 pixel #827472 colored shadow looks like.

```
.boxshadow{ -moz-box-shadow:4px 4px 4px  
4px #827472; -webkit-box-shadow:4px 4px  
4px 4px #827472; box-shadow:4px 4px 4px  
4px #827472 }
```

# Background

The CSS property to change the background color of an element to Hex 827472 is called "background". The background property can be set on classes, ids or directly on the HTML element.

```
.background, #background, body{  
background:#827472 }
```

If only the background color should be changed can be used:

```
.background{ background-color:#827472 }
```

This example shows the color as background, it is applied via the CSS property "background".

To optimize and compress your CSS code, you can use our [online CSS compressor and optimizer](#) based on csstidy. If you want to create a linear or radial gradient as background or border, check our [CSS Gradient Generator](#).



Hey! You found this booklet interesting? Support Converting Colors with the new Membership Option!

The pro membership hides all ads, plus gives you double the colors in the color bucket, and more awesome pro features!

**[Learn more, Memberships starting at \\$2.50/m!](#)**

**Follow me  
on Twitter!**

@ConvertingColor