

# Converting Colors

Hex(836467)

Have a look what the booklet for  
Hex(836467) contains.

<b>Hex(836467)</b> .....	3
<b><i>Conversions</i></b> .....	4
<b><i>Details</i></b> .....	6
<b><i>Harmonies</i></b> .....	11
<b><i>Previews</i></b> .....	23
<b><i>Color Blindness Simulation</i></b> .....	26
<b><i>CSS Examples</i></b> .....	29

**Color**

**Hex(836467)**

# Conversions

## Conversions Part 1

<b>Format</b>	<b>Color</b>
Hex	836467
RGB	131, 100, 103
RGB Percent	51%, 39%, 40%
CMY	0.4863, 0.6078, 0.5961
CMYK	0.00, 0.24, 0.21, 0.49
HSL	354°, 13%, 45%
HSV	354°, 24%, 51%
XYZ	16.3654, 14.9189, 14.8490
YIQ	109.6110, 17.5130, 7.5050

# Conversions

## Conversions Part 2

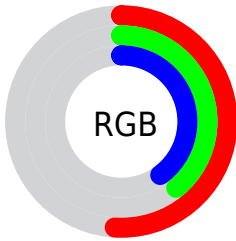
<b>Format</b>	<b>Color</b>
<b>R<sub>YB</sub></b>	131, 100, 103
Decimal	8610919
CIE Lab	45.52, 12.98, 3.13
CIE LCh	46, 13.350, 13.551
Yxy	14.9189, 0.3547, 0.3234
Android (android.graphics.Color)	4286800999 (0xFF836467)
YUV	109.6110, -3.2592, 18.7582
Hunter-Lab	38.6250, 8.0367, 4.2440

# Details

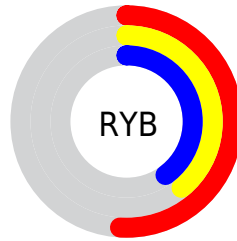
The Hex color **836467** is a dark color, and the websafe version is hex **996666**. A complement of this color would be **648380**, and the grayscale version is **6E6E6E**.

A 20% lighter version of the original color is **B9979A**, and **513538** is the 20% darker color. If you saturate the color by 10%, you get **83575B**, and if you desaturate by 10%, it is **837173**.

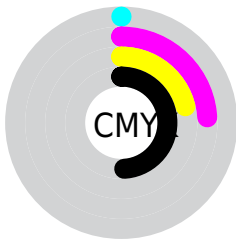
# Distribution



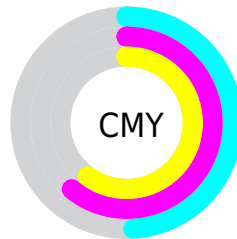
- Red (51%)
- Green (39%)
- Blue (40%)



- Red (51%)
- Yellow (39%)
- Blue (40%)



- Cyan (0%)
- Magenta (24%)
- Yellow (21%)
- Black (49%)



- Cyan (49%)
- Magenta (61%)
- Yellow (60%)

# Brightness & Saturation Gradients

These gradients show how the Hex color 836467 changes by changing the brightness by 10 percent. The first figure shows a shift by +10% for each color and the second figure -10%.

Similar to the brightness gradients but the following saturation gradients show a change of the Hex color 836467 by changing the saturation by 10% instead.



836467

836467

FFFFFF

694C4F

B9979A

513538

D4B2B5

392023

F1CDD0

240A0D

FFE9ED

000000

836467

836467

83575B

837173

834A4F

837E7F

833D44

838B8A

■ 833038

■ 839896

■ 83232C

■ 83A5A2

■ 831520

■ 83B3AE

■ 830814

■ 83C0BA

■ 83000D

■ 83CDC6

■ 83DAD1

# Harmonies

## Analogous

The Analogous color harmony consists of three colors that are next to each other on the color wheel.



7E6572



836467



81665D

# Triad

The Triadic color harmony groups three colors that are evenly spaced from another and form a triangle on the color wheel.



836467



62705B



586F81

# Complementary

The Complementary color scheme is a pair of colors which are on the opposite of each other on the color wheel.



836467



648380

# Split Complementary

Split-complementary colors differ from the complementary color scheme. The scheme consists of three colors, the original color and two neighbors of the complement color.



4F717B



836467



567265

# Square

The Square scheme is like the rectangle color scheme, but the four colors are evenly spaced on the color wheel.



836467



6F6D56



4F7271



666B81

# Rectangle

The Rectangle color scheme consists of four colors that form a rectangle on the color wheel.



836467



7D6858



4F7271



54707F



# Sweetspot

The Sweet Spot groups the original color and five complimentary colors.



836467



AB9FA0



806483



575050



D6D6D6



575757



# Same Dimension

The Same Dimension uses a secret algorithm to generate beautiful new colors.



836467



AB7B80



837064



423C3C



82000D



030000



# Inverse Universe

The Inverse Universe completely reimagines the original color for something new.



836467



AB7B80



647783



423C3C



82000D

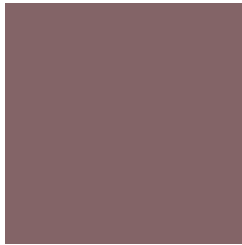


030000



# Previews

## White Background



This preview shows how the Hex color 836467 looks on a white background.

## Color Contrast Check

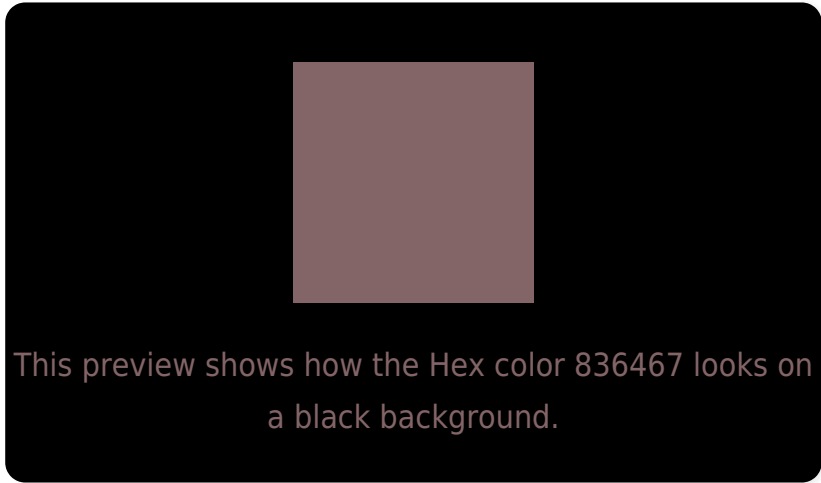
Large Text (above 18pt) WCAG AA ✓ Pass

Any Text WCAG AA ✓ Pass

Large Text (above 18pt) WCAG AAA ✓ Pass

Any Text WCAG AAA × Fail

# Black Background



## Color Contrast Check

Large Text (above 18pt) WCAG AA ✓ Pass

Any Text WCAG AA × Fail

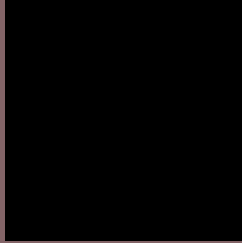
Large Text (above 18pt) WCAG AAA × Fail

Any Text WCAG AAA × Fail

If you want to check with other color combinations, try the [Color Contrast Checker](#).



## Hex 836467 Background



This preview shows how black text looks on a background with the Hex color 836467.



This preview shows how white text looks on a background with the Hex color 836467.

# Color Blindness Simulation

Color vision deficiency is a very complex topic, and I could not describe the different causes any better than Wikipedia does, so if you want to learn more, you should check out their [article about color blindness](#).

## Dichromacy



**Original Color**  
836467

**Protanopia**  
6E6B6B

**Deuteranopia**  
796866



**Tritanopia**  
83636B

# Trichromacy



**Original Color**  
836467

**Protanomaly**  
76686A

**Deuteranomaly**  
7D6766

**Tritanomaly**  
83636A

# Monochromacy



**Original Color**  
836467

**Achromatopsia**  
6E6E6E

**Achromatomaly**  
766A6B

# CSS Examples

## Text

The CSS property to change the color of the text to Hex 836467 is called "color". The color property can be set on classes, ids or directly on the HTML element.

This example shows how text in the color #836467 looks like.

```
.text, #text, p{  
    color:#836467  
}
```

If you want to add a text shadow in that color use the text-shadow property, you can generate a text shadow directly with our [CSS Text Shadow Generator](#).

Here you see how black text with a 4 pixel #836467 colored shadow looks like.

```
.shadow{ text-shadow: 4px 4px 2px #836467
}
```

## Border

The CSS property to change the border of an element to Hex 836467 is called "border". The border property can be set on classes, ids or directly on the HTML element.

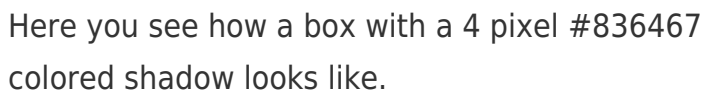
This example shows the color as border, it can be applied via the CSS property "border" or "border-color".

```
.border, #border, table{ border:4px solid
#836467 }
```

If only the border color should be changed use the property `border-color`.

```
.border{ border-color:#836467 }
```

If you want to add a box shadow in that color use:



Here you see how a box with a 4 pixel #836467 colored shadow looks like.

```
.boxshadow{ -moz-box-shadow:4px 4px 4px  
4px #836467; -webkit-box-shadow:4px 4px  
4px 4px #836467; box-shadow:4px 4px 4px  
4px #836467 }
```

# Background

The CSS property to change the background color of an element to Hex 836467 is called "background". The background property can be set on classes, ids or directly on the HTML element.

```
.background, #background, body{  
background:#836467 }
```

If only the background color should be changed can be used:

```
.background{ background-color:#836467 }
```

This example shows the color as background, it is applied via the CSS property "background".

To optimize and compress your CSS code, you can use our [online CSS compressor and optimizer](#) based on csstidy. If you want to create a linear or radial gradient as background or border, check our [CSS Gradient Generator](#).



Hey! You found this booklet interesting? Support Converting Colors with the new Membership Option!

The pro membership hides all ads, plus gives you double the colors in the color bucket, and more awesome pro features!

**[Learn more, Memberships starting at \\$2.50/m!](#)**

**Follow me  
on Twitter!**

@ConvertingColor