

# Converting Colors

Hex(86705F)

Have a look what the booklet for  
Hex(86705F) contains.

<b>Hex(86705F)</b> .....	3
<b><i>Conversions</i></b> .....	4
<b><i>Details</i></b> .....	6
<b><i>Harmonies</i></b> .....	11
<b><i>Previews</i></b> .....	23
<b><i>Color Blindness Simulation</i></b> .....	26
<b><i>CSS Examples</i></b> .....	29

**Color**

**Hex(86705F)**

# Conversions

## Conversions Part 1

<b>Format</b>	<b>Color</b>
Hex	86705F
RGB	134, 112, 95
RGB Percent	53%, 44%, 37%
CMY	0.4745, 0.5608, 0.6275
CMYK	0.00, 0.16, 0.29, 0.47
HSL	26°, 17%, 45%
HSV	26°, 29%, 53%
XYZ	17.6912, 17.4829, 13.2686
YIQ	116.6400, 18.5690, -0.6230

# Conversions

## Conversions Part 2

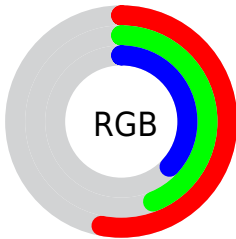
<b>Format</b>	<b>Color</b>
<b>RYB</b>	134, 125, 95
Decimal	8810591
CIELab	48.86, 5.90, 12.68
CIElCh	49, 13.982, 65.043
Yxy	17.4829, 0.3652, 0.3609
Android (android.graphics.Color)	4287000671 (0xFF86705F)
YUV	116.6400, -10.6685, 15.2247
Hunter-Lab	41.8126, 2.3529, 10.4540

# Details

The Hex color **86705F** is a dark color, and the websafe version is hex **666666**. A complement of this color would be **5F7586**, and the grayscale version is **757575**.

A 20% lighter version of the original color is **BCA491**, and **544031** is the 20% darker color. If you saturate the color by 10%, you get **866852**, and if you desaturate by 10%, it is **86786C**.

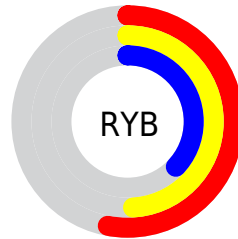
# Distribution



Red (53%)

Green (44%)

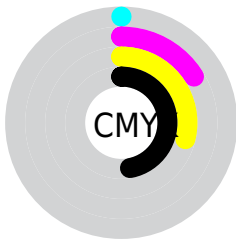
Blue (37%)



Red (53%)

Yellow (49%)

Blue (37%)

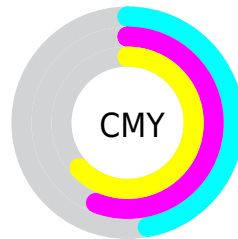


Cyan (0%)

Magenta (16%)

Yellow (29%)

Black (47%)



Cyan (47%)

Magenta (56%)

Yellow (63%)

# Brightness & Saturation Gradients

These gradients show how the Hex color 86705F changes by changing the brightness by 10 percent. The first figure shows a shift by +10% for each color and the second figure -10%.

Similar to the brightness gradients but the following saturation gradients show a change of the Hex color 86705F by changing the saturation by 10% instead.



 86705F

 86705F

FFFFFF

 6C5847

 BCA491

 544031

 D8BFAC

 3C2A1C

 F4DBC7

 261602

 FFF7E3

 030000

 000000

 86705F

 86705F

 866852

 86786C

 866144

 867F7A

865937

868787

865229

868E95

864A1C

8696A2

86430F

869DAF

863B01

86A5BD

863A00

86ACCA

86B4D8

# Harmonies

## Analogous

The Analogous color harmony consists of three colors that are next to each other on the color wheel.



8C6D67



86705F



7B745D

# Triad

The Triadic color harmony groups three colors that are evenly spaced from another and form a triangle on the color wheel.



86705F



577B76



797087

# Complementary

The Complementary color scheme is a pair of colors which are on the opposite of each other on the color wheel.



86705F



5F7586

# Split Complementary

Split-complementary colors differ from the complementary color scheme. The scheme consists of three colors, the original color and two neighbors of the complement color.



69748B



86705F



547A81

# Square

The Square scheme is like the rectangle color scheme, but the four colors are evenly spaced on the color wheel.



86705F



617A6A



5B7889



856D7E

# Rectangle

The Rectangle color scheme consists of four colors that form a rectangle on the color wheel.



86705F



73765F



5B7889



747289



# Sweetspot

The Sweet Spot groups the original color and five complimentary colors.



86705F



ADA59E



865F75



57514D



D6D6D6



575757



# Same Dimension

The Same Dimension uses a secret algorithm to generate beautiful new colors.



86705F



AD8B71



86835F



423F3C



823900



030100



# Inverse Universe

The Inverse Universe completely reimagines the original color for something new.



5F7586



7193AD



5F6286



3C3F42



004982

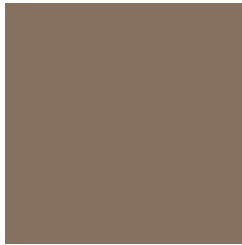


000103



# Previews

## White Background



This preview shows how the Hex color 86705F looks on a white background.

## Color Contrast Check

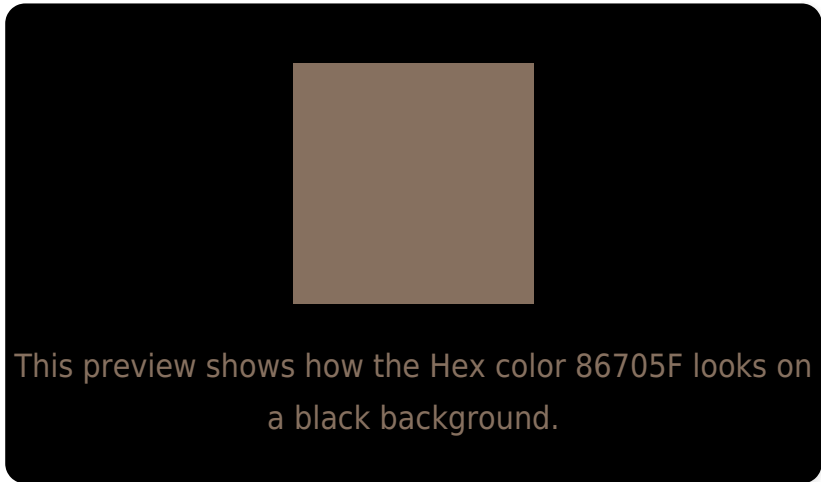
Large Text (above 18pt) WCAG AA ✓ Pass

Any Text WCAG AA ✓ Pass

Large Text (above 18pt) WCAG AAA ✓ Pass

Any Text WCAG AAA × Fail

# Black Background



## Color Contrast Check

Large Text (above 18pt) WCAG AA ✓ Pass

Any Text WCAG AA ✓ Pass

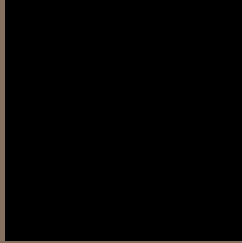
Large Text (above 18pt) WCAG AAA ✓ Pass

Any Text WCAG AAA × Fail

If you want to check with other color combinations, try the [Color Contrast Checker](#).



## Hex 86705F Background



This preview shows how black text looks on a background with the Hex color 86705F.



This preview shows how white text looks on a background with the Hex color 86705F.

# Color Blindness Simulation

Color vision deficiency is a very complex topic, and I could not describe the different causes any better than Wikipedia does, so if you want to learn more, you should check out their [article about color blindness](#).


## Dichromacy



**Original Color**  
86705F

**Protanopia**  
7B7461

**Deuteranopia**  
87705F



**Tritanopia**  
896D75

# Trichromacy



**Original Color**  
86705F

**Protanomaly**  
7F7360

**Deuteranomaly**  
87705F

**Tritanomaly**  
886E6D

# Monochromacy



**Original Color**  
86705F

**Achromatopsia**  
757575

**Achromatomaly**  
7B736D

# CSS Examples

## Text

The CSS property to change the color of the text to Hex 86705F is called "color". The color property can be set on classes, ids or directly on the HTML element.

This example shows how text in the color #86705F looks like.

```
.text, #text, p{  
    color:#86705F  
}
```

If you want to add a text shadow in that color use the text-shadow property, you can generate a text shadow directly with our [CSS Text Shadow Generator](#).

Here you see how black text with a 4 pixel #86705F colored shadow looks like.

```
.shadow{ text-shadow: 4px 4px 2px #86705F
}
```

## Border

The CSS property to change the border of an element to Hex 86705F is called "border". The border property can be set on classes, ids or directly on the HTML element.

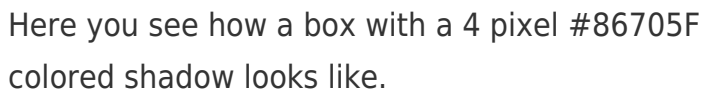
This example shows the color as border, it can be applied via the CSS property "border" or "border-color".

```
.border, #border, table{ border:4px solid
#86705F }
```

If only the border color should be changed use the property `border-color`.

```
.border{ border-color:#86705F }
```

If you want to add a box shadow in that color use:



Here you see how a box with a 4 pixel #86705F colored shadow looks like.

```
.boxshadow{ -moz-box-shadow:4px 4px 4px  
4px #86705F; -webkit-box-shadow:4px 4px  
4px 4px #86705F; box-shadow:4px 4px 4px  
4px #86705F }
```

# Background

The CSS property to change the background color of an element to Hex 86705F is called "background". The background property can be set on classes, ids or directly on the HTML element.

```
.background, #background, body{  
background:#86705F }
```

If only the background color should be changed can be used:

```
.background{ background-color:#86705F }
```

This example shows the color as background, it is applied via the CSS property "background".

To optimize and compress your CSS code, you can use our [online CSS compressor and optimizer](#) based on csstidy. If you want to create a linear or radial gradient as background or border, check our [CSS Gradient Generator](#).



Hey! You found this booklet interesting? Support Converting Colors with the new Membership Option!

The pro membership hides all ads, plus gives you double the colors in the color bucket, and more awesome pro features!

**[Learn more, Memberships starting at \\$2.50/m!](#)**

**Follow me  
on Twitter!**

@ConvertingColor