

Converting Colors

Hex(876D51)

Have a look what the booklet for
Hex(876D51) contains.

Hex(876D51)	3
<i>Conversions</i>	4
<i>Details</i>	6
<i>Harmonies</i>	11
<i>Previews</i>	23
<i>Color Blindness Simulation</i>	26
<i>CSS Examples</i>	29

Color

Hex(876D51)

Conversions

Conversions Part 1

Format	Color
Hex	876D51
RGB	135, 109, 81
RGB Percent	53%, 43%, 32%
CMY	0.4706, 0.5725, 0.6824
CMYK	0.00, 0.19, 0.40, 0.47
HSL	31°, 25%, 42%
HSV	31°, 40%, 53%
XYZ	16.9455, 16.6823, 10.1115
YIQ	113.5820, 24.4840, -3.1960

Conversions

Conversions Part 2

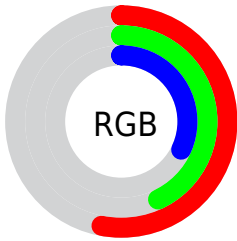
Format	Color
RYB	131, 135, 81
Decimal	8875345
CIELab	47.86, 6.17, 19.53
CIELCh	48, 20.479, 72.479
Yxy	16.6823, 0.3874, 0.3814
Android (android.graphics.Color)	4287065425 (0xFF876D51)
YUV	113.5820, -16.0629, 18.7836
Hunter-Lab	40.8439, 2.5801, 13.9127

Details

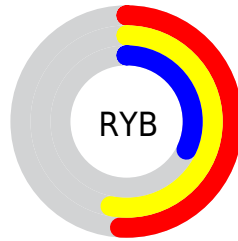
The Hex color **876D51** is a dark color, and the websafe version is hex **666633**. A complement of this color would be **516B87**, and the grayscale version is **727272**.

A 20% lighter version of the original color is **BDA083**, and **543E24** is the 20% darker color. If you saturate the color by 10%, you get **876744**, and if you desaturate by 10%, it is **87745E**.

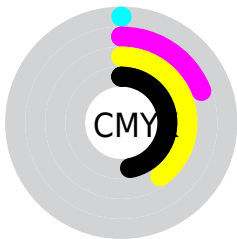
Distribution



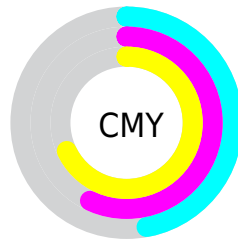
- Red (53%)
- Green (43%)
- Blue (32%)



- Red (51%)
- Yellow (53%)
- Blue (32%)



- Cyan (0%)
- Magenta (19%)
- Yellow (40%)
- Black (47%)



- Cyan (47%)
- Magenta (57%)
- Yellow (68%)

Brightness & Saturation Gradients

These gradients show how the Hex color 876D51 changes by changing the brightness by 10 percent. The first figure shows a shift by +10% for each color and the second figure -10%.

Similar to the brightness gradients but the following saturation gradients show a change of the Hex color 876D51 by changing the saturation by 10% instead.



876D51



876D51

FFFFFF



6D553A



BDA083



543E24



DABB9D



3C280F



F6D7B8



251400



FFF4D3



000000



FFFFFF0



876D51



876D51



876744



87745E



876036



877A6C

■ 875A29

■ 87817A

■ 87531B

■ 878787

■ 874D0D

■ 878D95

■ 874600

■ 8794A2

■ 879BB0

■ 87A1BD

■ 87A8CB

Harmonies

Analogous

The Analogous color harmony consists of three colors that are next to each other on the color wheel.



92685B



876D51



777350

Triad

The Triadic color harmony groups three colors that are evenly spaced from another and form a triangle on the color wheel.



876D51



407B78



7D6B8B

Complementary

The Complementary color scheme is a pair of colors which are on the opposite of each other on the color wheel.



876D51



516B87

Split Complementary

Split-complementary colors differ from the complementary color scheme. The scheme consists of three colors, the original color and two neighbors of the complement color.



667193



876D51



3E7A88

Square

The Square scheme is like the rectangle color scheme, but the four colors are evenly spaced on the color wheel.



876D51



507A67



4E7692



8D667C

Rectangle

The Rectangle color scheme consists of four colors that form a rectangle on the color wheel.



876D51



6A7654



4E7692



766D8F

Sweetspot

The Sweet Spot groups the original color and five complimentary colors.



876D51



B0A69B



87516B



59534D



D9D9D9



595959

Same Dimension

The Same Dimension uses a secret algorithm to generate beautiful new colors.



876D51



B0875B



868751



423F3C



824300



030100

Inverse Universe

The Inverse Universe completely reimagines the original color for something new.



516B87



5B84B0



525187



3C3F42



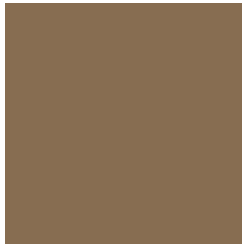
003F82



000103

Previews

White Background



This preview shows how the Hex color 876D51 looks on a white background.

Color Contrast Check

Large Text (above 18pt) WCAG AA ✓ Pass

Any Text WCAG AA ✓ Pass

Large Text (above 18pt) WCAG AAA ✓ Pass

Any Text WCAG AAA × Fail

Black Background



Color Contrast Check

Large Text (above 18pt) WCAG AA ✓ Pass

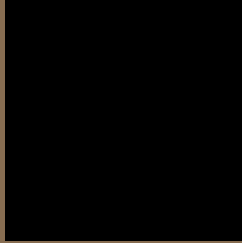
Any Text WCAG AA × Fail

Large Text (above 18pt) WCAG AAA × Fail

Any Text WCAG AAA × Fail

If you want to check with other color combinations, try the [Color Contrast Checker](#).

Hex 876D51 Background



This preview shows how black text looks on a background with the Hex color 876D51.



This preview shows how white text looks on a background with the Hex color 876D51.

Color Blindness Simulation

Color vision deficiency is a very complex topic, and I could not describe the different causes any better than Wikipedia does, so if you want to learn more, you should check out their [article about color blindness](#).


Dichromacy



Original Color
876D51

Protanopia
7A7253

Deuteranopia
876D51



Tritanopia
8A6971

Trichromacy



Original Color
876D51

Protanomaly
7F7052

Deuteranomaly
876D51

Tritanomaly
896A65

Monochromacy



Original Color
876D51

Achromatopsia
727272

Achromatomaly
7A7066

CSS Examples

Text

The CSS property to change the color of the text to Hex 876D51 is called "color". The color property can be set on classes, ids or directly on the HTML element.

This example shows how text in the color #876D51 looks like.

```
.text, #text, p{  
    color:#876D51  
}
```

If you want to add a text shadow in that color use the text-shadow property, you can generate a text shadow directly with our [CSS Text Shadow Generator](#).

Here you see how black text with a 4 pixel #876D51 colored shadow looks like.

```
.shadow{ text-shadow: 4px 4px 2px #876D51
}
```

Border

The CSS property to change the border of an element to Hex 876D51 is called "border". The border property can be set on classes, ids or directly on the HTML element.

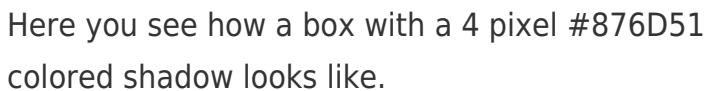
This example shows the color as border, it can be applied via the CSS property "border" or "border-color".

```
.border, #border, table{ border:4px solid
#876D51 }
```

If only the border color should be changed use the property `border-color`.

```
.border{ border-color:#876D51 }
```

If you want to add a box shadow in that color use:



Here you see how a box with a 4 pixel #876D51 colored shadow looks like.

```
.boxshadow{ -moz-box-shadow:4px 4px 4px  
4px #876D51; -webkit-box-shadow:4px 4px  
4px 4px #876D51; box-shadow:4px 4px 4px  
4px #876D51 }
```

Background

The CSS property to change the background color of an element to Hex 876D51 is called "background". The background property can be set on classes, ids or directly on the HTML element.

```
.background, #background, body{  
background:#876D51 }
```

If only the background color should be changed can be used:

```
.background{ background-color:#876D51 }
```

This example shows the color as background, it is applied via the CSS property "background".

To optimize and compress your CSS code, you can use our [online CSS compressor and optimizer](#) based on csstidy. If you want to create a linear or radial gradient as background or border, check our [CSS Gradient Generator](#).

Hey! You found this booklet interesting? Support Converting Colors with the new Membership Option!

The pro membership hides all ads, plus gives you double the colors in the color bucket, and more awesome pro features!

[Learn more, Memberships starting at \\$2.50/m!](#)

**Follow me
on Twitter!**

@ConvertingColor