

Converting Colors

Hex(8A6C53)

Have a look what the booklet for
Hex(8A6C53) contains.

Hex(8A6C53)	3
<i>Conversions</i>	4
<i>Details</i>	6
<i>Harmonies</i>	11
<i>Previews</i>	23
<i>Color Blindness Simulation</i>	26
<i>CSS Examples</i>	29

Color

Hex(8A6C53)

Conversions

Conversions Part 1

Format	Color
Hex	8A6C53
RGB	138, 108, 83
RGB Percent	54%, 42%, 33%
CMY	0.4588, 0.5765, 0.6745
CMYK	0.00, 0.22, 0.40, 0.46
HSL	27°, 25%, 43%
HSV	27°, 40%, 54%
XYZ	17.4051, 16.7529, 10.4999
YIQ	114.1200, 25.9050, -1.4150

Conversions

Conversions Part 2

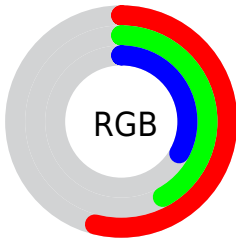
Format	Color
R_{YB}	138, 129, 83
Decimal	9071699
CIE _{Lab}	47.95, 8.30, 18.54
CIE _{LCh}	48, 20.312, 65.885
Yxy	16.7529, 0.3897, 0.3751
Android (android.graphics.Color)	4287261779 (0xFF8A6C53)
YUV	114.1200, -15.3422, 20.9428
Hunter-Lab	40.9303, 4.2768, 13.4415

Details

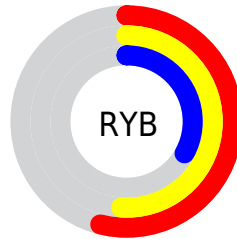
The Hex color **8A6C53** is a dark color, and the websafe version is hex **996666**. A complement of this color would be **53718A**, and the grayscale version is **727272**.

A 20% lighter version of the original color is **C19F85**, and **563D26** is the 20% darker color. If you saturate the color by 10%, you get **8A6445**, and if you desaturate by 10%, it is **8A7461**.

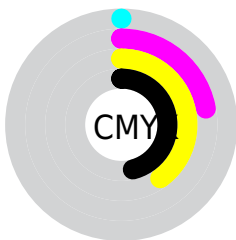
Distribution



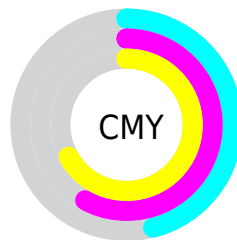
- Red (54%)
- Green (42%)
- Blue (33%)



- Red (54%)
- Yellow (51%)
- Blue (33%)



- Cyan (0%)
- Magenta (22%)
- Yellow (40%)
- Black (46%)



- Cyan (46%)
- Magenta (58%)
- Yellow (67%)

Brightness & Saturation Gradients

These gradients show how the Hex color 8A6C53 changes by changing the brightness by 10 percent. The first figure shows a shift by +10% for each color and the second figure -10%.

Similar to the brightness gradients but the following saturation gradients show a change of the Hex color 8A6C53 by changing the saturation by 10% instead.



8A6C53



8A6C53

FFFFFF



70543C



C19F85



563D26



DDBA9F



3E2711



FAD6BA



271300



FFF2D6



000000



FFFFF2



8A6C53



8A6C53



8A6445



8A7461



8A5D37



8A7B6F

 8A552A

 8A837C

 8A4E1C

 8A8A8A

 8A460E

 8A9298

 8A3F00

 8A99A6

 8AA1B4

 8AA8C1

 8AB0CF

Harmonies

Analogous

The Analogous color harmony consists of three colors that are next to each other on the color wheel.



93675F



8A6C53



7B7250

Triad

The Triadic color harmony groups three colors that are evenly spaced from another and form a triangle on the color wheel.



8A6C53



437B75



796C8E

Complementary

The Complementary color scheme is a pair of colors which are on the opposite of each other on the color wheel.



8A6C53



53718A

Split Complementary

Split-complementary colors differ from the complementary color scheme. The scheme consists of three colors, the original color and two neighbors of the complement color.



617294



8A6C53



3E7A85

Square

The Square scheme is like the rectangle color scheme, but the four colors are evenly spaced on the color wheel.



8A6C53



547A63



4A7791



8B6780

Rectangle

The Rectangle color scheme consists of four colors that form a rectangle on the color wheel.



8A6C53



6F7553



4A7791



716E91

Sweetspot

The Sweet Spot groups the original color and five complimentary colors.



8A6C53



B3A79D



8A5371



59524D



D9D9D9



595959

Same Dimension

The Same Dimension uses a secret algorithm to generate beautiful new colors.



8A6C53



B3845D



8A8753



45413E



853C00



050200

Inverse Universe

The Inverse Universe completely reimagines the original color for something new.



53718A



5D8CB3



53568A



3E4245



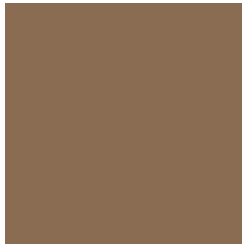
004885



000305

Previews

White Background



This preview shows how the Hex color 8A6C53 looks on a white background.

Color Contrast Check

Large Text (above 18pt) WCAG AA ✓ Pass

Any Text WCAG AA ✓ Pass

Large Text (above 18pt) WCAG AAA ✓ Pass

Any Text WCAG AAA × Fail

Black Background



Color Contrast Check

Large Text (above 18pt) WCAG AA ✓ Pass

Any Text WCAG AA × Fail

Large Text (above 18pt) WCAG AAA × Fail

Any Text WCAG AAA × Fail

If you want to check with other color combinations, try the [Color Contrast Checker](#).

Hex 8A6C53 Background



This preview shows how black text looks on a background with the Hex color 8A6C53.



This preview shows how white text looks on a background with the Hex color 8A6C53.

Color Blindness Simulation

Color vision deficiency is a very complex topic, and I could not describe the different causes any better than Wikipedia does, so if you want to learn more, you should check out their [article about color blindness](#).

Dichromacy



Original Color
8A6C53

Protanopia
7A7256

Deuteranopia
876D53



Tritanopia
8D6870

Trichromacy



Original Color
8A6C53

Protanomaly
807055

Deuteranomaly
886D53

Tritanomaly
8C6965

Monochromacy



Original Color
8A6C53

Achromatopsia
727272

Achromatomaly
7B7067

CSS Examples

Text

The CSS property to change the color of the text to Hex 8A6C53 is called "color". The color property can be set on classes, ids or directly on the HTML element.

This example shows how text in the color #8A6C53 looks like.

```
.text, #text, p{  
    color:#8A6C53  
}
```

If you want to add a text shadow in that color use the text-shadow property, you can generate a text shadow directly with our [CSS Text Shadow Generator](#).

Here you see how black text with a 4 pixel #8A6C53 colored shadow looks like.

```
.shadow{ text-shadow: 4px 4px 2px #8A6C53
}
```

Border

The CSS property to change the border of an element to Hex 8A6C53 is called "border". The border property can be set on classes, ids or directly on the HTML element.

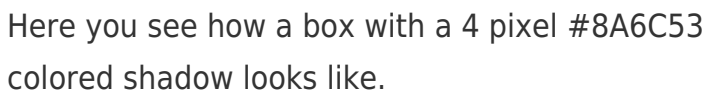
This example shows the color as border, it can be applied via the CSS property "border" or "border-color".

```
.border, #border, table{ border:4px solid
#8A6C53 }
```

If only the border color should be changed use the property `border-color`.

```
.border{ border-color:#8A6C53 }
```

If you want to add a box shadow in that color use:



Here you see how a box with a 4 pixel #8A6C53 colored shadow looks like.

```
.boxshadow{ -moz-box-shadow:4px 4px 4px  
4px #8A6C53; -webkit-box-shadow:4px 4px  
4px 4px #8A6C53; box-shadow:4px 4px 4px  
4px #8A6C53 }
```

Background

The CSS property to change the background color of an element to Hex 8A6C53 is called "background". The background property can be set on classes, ids or directly on the HTML element.

```
.background, #background, body{  
background:#8A6C53 }
```

If only the background color should be changed can be used:

```
.background{ background-color:#8A6C53 }
```

This example shows the color as background, it is applied via the CSS property "background".

To optimize and compress your CSS code, you can use our [online CSS compressor and optimizer](#) based on csstidy. If you want to create a linear or radial gradient as background or border, check our [CSS Gradient Generator](#).

Hey! You found this booklet interesting? Support Converting Colors with the new Membership Option!

The pro membership hides all ads, plus gives you double the colors in the color bucket, and more awesome pro features!

[Learn more, Memberships starting at \\$2.50/m!](#)

**Follow me
on Twitter!**

@ConvertingColor