

# Converting Colors

Hex(8B7159)

Have a look what the booklet for  
Hex(8B7159) contains.

<b>Hex(8B7159)</b> .....	3
<b><i>Conversions</i></b> .....	4
<b><i>Details</i></b> .....	6
<b><i>Harmonies</i></b> .....	11
<b><i>Previews</i></b> .....	23
<b><i>Color Blindness Simulation</i></b> .....	26
<b><i>CSS Examples</i></b> .....	29

**Color**

**Hex(8B7159)**

# Conversions

## Conversions Part 1

<b>Format</b>	<b>Color</b>
Hex	8B7159
RGB	139, 113, 89
RGB Percent	55%, 44%, 35%
CMY	0.4549, 0.5569, 0.6510
CMYK	0.00, 0.19, 0.36, 0.45
HSL	29°, 22%, 45%
HSV	29°, 36%, 55%
XYZ	18.3558, 18.0205, 11.9620
YIQ	118.0380, 23.2000, -1.9520

# Conversions

## Conversions Part 2

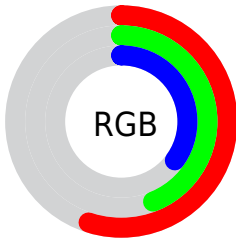
<b>Format</b>	<b>Color</b>
<b>RYB</b>	139, 135, 89
Decimal	9138521
CIELab	49.52, 6.59, 17.18
CIELCh	50, 18.401, 69.003
Yxy	18.0205, 0.3797, 0.3728
Android (android.graphics.Color)	4287328601 (0xFF8B7159)
YUV	118.0380, -14.3157, 18.3837
Hunter-Lab	42.4505, 2.8955, 13.0082

# Details

The Hex color **8B7159** is a dark color, and the websafe version is hex **996666**. A complement of this color would be **59738B**, and the grayscale version is **767676**.

A 20% lighter version of the original color is **C1A58B**, and **58412B** is the 20% darker color. If you saturate the color by 10%, you get **8B6A4B**, and if you desaturate by 10%, it is **8B7867**.

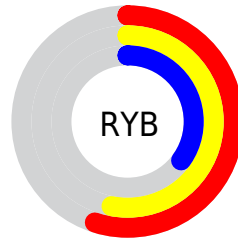
# Distribution



Red (55%)

Green (44%)

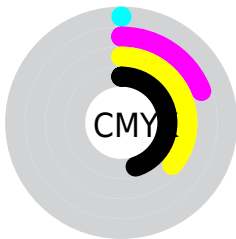
Blue (35%)



Red (55%)

Yellow (53%)

Blue (35%)

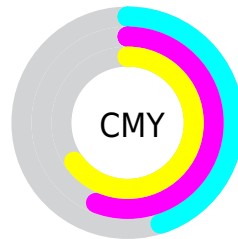


Cyan (0%)

Magenta (19%)

Yellow (36%)

Black (45%)



Cyan (45%)

Magenta (56%)

Yellow (65%)

# Brightness & Saturation Gradients

These gradients show how the Hex color 8B7159 changes by changing the brightness by 10 percent. The first figure shows a shift by +10% for each color and the second figure -10%.

Similar to the brightness gradients but the following saturation gradients show a change of the Hex color 8B7159 by changing the saturation by 10% instead.



 8B7159

 8B7159

FFFFFF

 715941

 C1A58B

 58412B

 DEC0A6

 3F2B16

 FADCC1

 2A1700

 FFF8DD

 0C0000

 FFFFF9

 000000

 8B7159

 8B7159

 8B6A4B

 8B7867

 8B633D

 8B7F75

 8B5B2F

 8B8783

 8B5421

 8B8E91

 8B4D14

 8B959E

 8B4606

 8B9CAC

 8B4300

 8BA4BA

 8BABC8

 8BB2D6

# Harmonies

## Analogous

The Analogous color harmony consists of three colors that are next to each other on the color wheel.



946D63



8B7159



7D7657

# Triad

The Triadic color harmony groups three colors that are evenly spaced from another and form a triangle on the color wheel.



8B7159



4C7F7A



7E708E

# Complementary

The Complementary color scheme is a pair of colors which are on the opposite of each other on the color wheel.



8B7159



59738B

# Split Complementary

Split-complementary colors differ from the complementary color scheme. The scheme consists of three colors, the original color and two neighbors of the complement color.



697694



8B7159



497E89

# Square

The Square scheme is like the rectangle color scheme, but the four colors are evenly spaced on the color wheel.



8B7159



5A7E6A



557A92



8E6C81

# Rectangle

The Rectangle color scheme consists of four colors that form a rectangle on the color wheel.



8B7159



71795A



557A92



787291



# Sweetspot

The Sweet Spot groups the original color and five complimentary colors.



8B7159



B5ABA1



8B5974



5C5650



DBDBDB



5C5C5C



# Same Dimension

The Same Dimension uses a secret algorithm to generate beautiful new colors.



8B7159



B58D67



8B8959



45413E



854000



050200



# Inverse Universe

The Inverse Universe completely reimagines the original color for something new.



59738B



6790B5



595B8B



3E4245



004585

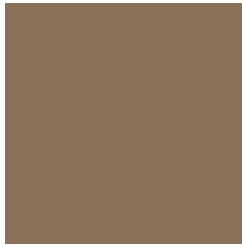


000305



# Previews

## White Background



This preview shows how the Hex color 8B7159 looks on a white background.

## Color Contrast Check

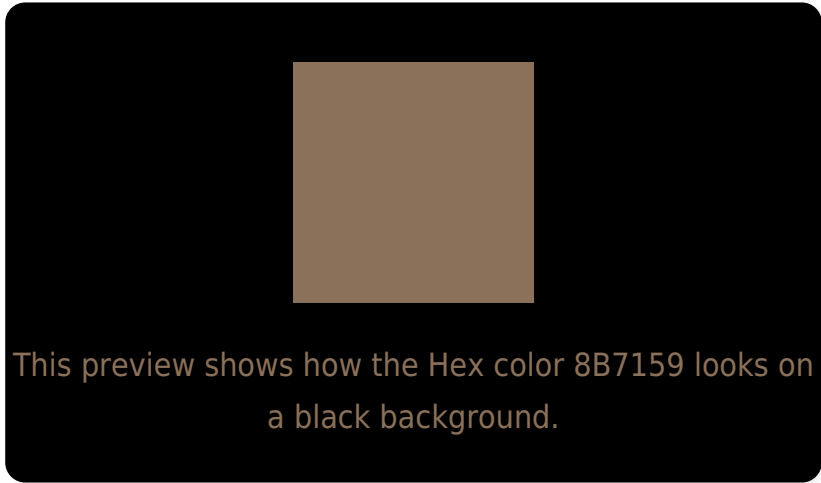
Large Text (above 18pt) WCAG AA ✓ Pass

Any Text WCAG AA ✓ Pass

Large Text (above 18pt) WCAG AAA ✓ Pass

Any Text WCAG AAA × Fail

# Black Background



## Color Contrast Check

Large Text (above 18pt) WCAG AA ✓ Pass

Any Text WCAG AA ✓ Pass

Large Text (above 18pt) WCAG AAA ✓ Pass

Any Text WCAG AAA × Fail

If you want to check with other color combinations, try the [Color Contrast Checker](#).



## Hex 8B7159 Background



This preview shows how black text looks on a background with the Hex color 8B7159.



This preview shows how white text looks on a background with the Hex color 8B7159.

# Color Blindness Simulation

Color vision deficiency is a very complex topic, and I could not describe the different causes any better than Wikipedia does, so if you want to learn more, you should check out their [article about color blindness](#).

## Dichromacy



**Original Color**  
8B7159

**Protanopia**  
7E765B

**Deuteranopia**  
8B7159



**Tritanopia**  
8E6D76

# Trichromacy



**Original Color**  
8B7159

**Protanomaly**  
83745A

**Deuteranomaly**  
8B7159

**Tritanomaly**  
8D6E6B

# Monochromacy



**Original Color**  
8B7159

**Achromatopsia**  
767676

**Achromatomaly**  
7E746B

# CSS Examples

## Text

The CSS property to change the color of the text to Hex 8B7159 is called "color". The color property can be set on classes, ids or directly on the HTML element.

This example shows how text in the color #8B7159 looks like.

```
.text, #text, p{  
    color:#8B7159  
}
```

If you want to add a text shadow in that color use the text-shadow property, you can generate a text shadow directly with our [CSS Text Shadow Generator](#).

Here you see how black text with a 4 pixel #8B7159 colored shadow looks like.

```
.shadow{ text-shadow: 4px 4px 2px #8B7159
}
```

## Border

The CSS property to change the border of an element to Hex 8B7159 is called "border". The border property can be set on classes, ids or directly on the HTML element.

This example shows the color as border, it can be applied via the CSS property "border" or "border-color".

```
.border, #border, table{ border:4px solid
#8B7159 }
```

If only the border color should be changed use the property `border-color`.

```
.border{ border-color:#8B7159 }
```

If you want to add a box shadow in that color use:

Here you see how a box with a 4 pixel #8B7159 colored shadow looks like.

```
.boxshadow{ -moz-box-shadow:4px 4px 4px  
4px #8B7159; -webkit-box-shadow:4px 4px  
4px 4px #8B7159; box-shadow:4px 4px 4px  
4px #8B7159 }
```

# Background

The CSS property to change the background color of an element to Hex 8B7159 is called "background". The background property can be set on classes, ids or directly on the HTML element.

```
.background, #background, body{  
background:#8B7159 }
```

If only the background color should be changed can be used:

```
.background{ background-color:#8B7159 }
```

This example shows the color as background, it is applied via the CSS property "background".

To optimize and compress your CSS code, you can use our [online CSS compressor and optimizer](#) based on csstidy. If you want to create a linear or radial gradient as background or border, check our [CSS Gradient Generator](#).



Hey! You found this booklet interesting? Support Converting Colors with the new Membership Option!

The pro membership hides all ads, plus gives you double the colors in the color bucket, and more awesome pro features!

**[Learn more, Memberships starting at \\$2.50/m!](#)**

**Follow me  
on Twitter!**

@ConvertingColor