

# Converting Colors

Hex(92765C)

Have a look what the booklet for  
Hex(92765C) contains.

<b>Hex(92765C)</b> .....	3
<b><i>Conversions</i></b> .....	4
<b><i>Details</i></b> .....	6
<b><i>Harmonies</i></b> .....	11
<b><i>Previews</i></b> .....	23
<b><i>Color Blindness Simulation</i></b> .....	26
<b><i>CSS Examples</i></b> .....	29

**Color**

**Hex(92765C)**

# Conversions

## Conversions Part 1

<b>Format</b>	<b>Color</b>
Hex	92765C
RGB	146, 118, 92
RGB Percent	57%, 46%, 36%
CMY	0.4275, 0.5373, 0.6392
CMYK	0.00, 0.19, 0.37, 0.43
HSL	29°, 23%, 47%
HSV	29°, 37%, 57%
XYZ	20.2643, 19.8406, 12.8868
YIQ	123.4080, 25.0340, -2.1500

# Conversions

## Conversions Part 2

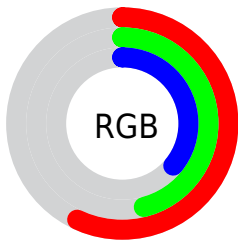
<b>Format</b>	<b>Color</b>
<b>R<sub>YB</sub></b>	146, 142, 92
Decimal	9598556
CIE Lab	51.66, 7.08, 18.45
CIE LCh	52, 19.764, 69.019
Yxy	19.8406, 0.3824, 0.3744
Android (android.graphics.Color)	4287788636 (0xFF92765C)
YUV	123.4080, -15.4841, 19.8132
Hunter-Lab	44.5427, 3.2569, 14.0266

# Details

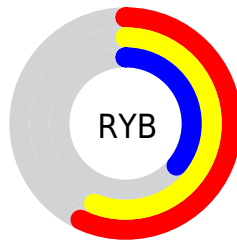
The Hex color **92765C** is a dark color, and the websafe version is hex **996666**. A complement of this color would be **5C7892**, and the grayscale version is **7C7C7C**.

A 20% lighter version of the original color is **C9AA8E**, and **5E462E** is the 20% darker color. If you saturate the color by 10%, you get **926E4D**, and if you desaturate by 10%, it is **927E6B**.

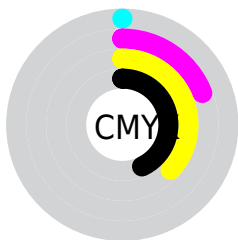
# Distribution



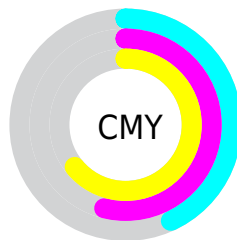
- Red (57%)
- Green (46%)
- Blue (36%)



- Red (57%)
- Yellow (56%)
- Blue (36%)



- Cyan (0%)
- Magenta (19%)
- Yellow (37%)
- Black (43%)



- Cyan (43%)
- Magenta (54%)
- Yellow (64%)

# Brightness & Saturation Gradients

These gradients show how the Hex color 92765C changes by changing the brightness by 10 percent. The first figure shows a shift by +10% for each color and the second figure -10%.

Similar to the brightness gradients but the following saturation gradients show a change of the Hex color 92765C by changing the saturation by 10% instead.





92765C



92765C

FFFFFF



785D44



C9AA8E



5E462E



E5C5A9



452F19



FFE1C4



2F1A00



FFFEE0



170000

FFFFFFD



000000



92765C



92765C



926E4D



927E6B



92673F



928579

■ 925F30

■ 928D88

■ 925822

■ 929496

■ 925013

■ 929CA5

■ 924904

■ 92A3B4

■ 924600

■ 92ABC2

■ 92B3D1

■ 92BADF

# Harmonies

## Analogous

The Analogous color harmony consists of three colors that are next to each other on the color wheel.



9C7167



92765C



827C5A

# Triad

The Triadic color harmony groups three colors that are evenly spaced from another and form a triangle on the color wheel.



92765C



4D8580



847595

# Complementary

The Complementary color scheme is a pair of colors which are on the opposite of each other on the color wheel.



92765C



5C7892

# Split Complementary

Split-complementary colors differ from the complementary color scheme. The scheme consists of three colors, the original color and two neighbors of the complement color.



6E7B9C



92765C



4A8490

# Square

The Square scheme is like the rectangle color scheme, but the four colors are evenly spaced on the color wheel.



92765C



5C846E



57809A



957088

# Rectangle

The Rectangle color scheme consists of four colors that form a rectangle on the color wheel.



92765C



767F5D



57809A



7D7799



# Sweetspot

The Sweet Spot groups the original color and five complimentary colors.



92765C



BDB2A8



925C79



5E5852



DEDEDE



5E5E5E



# Same Dimension

The Same Dimension uses a secret algorithm to generate beautiful new colors.



92765C



BD926A



92905C



4A4643



8A4200



0A0500



# Inverse Universe

The Inverse Universe completely reimagines the original color for something new.



5C7892



6A95BD



5C5E92



43464A



00478A

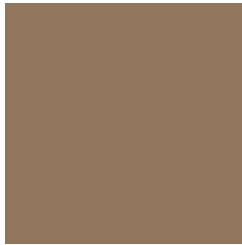


00050A



# Previews

## White Background



This preview shows how the Hex color 92765C looks on a white background.

## Color Contrast Check

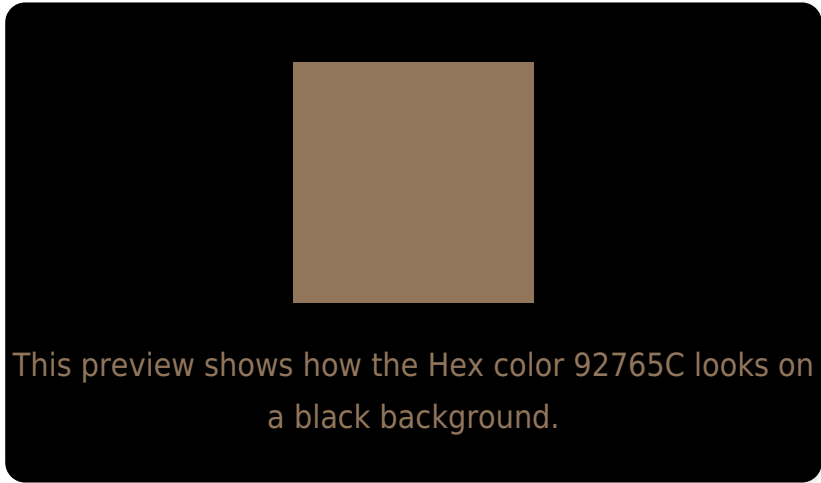
Large Text (above 18pt) WCAG AA ✓ Pass

Any Text WCAG AA × Fail

Large Text (above 18pt) WCAG AAA × Fail

Any Text WCAG AAA × Fail

# Black Background



## Color Contrast Check

Large Text (above 18pt) WCAG AA ✓ Pass

Any Text WCAG AA ✓ Pass

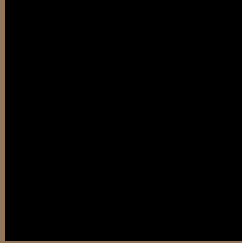
Large Text (above 18pt) WCAG AAA ✓ Pass

Any Text WCAG AAA × Fail

If you want to check with other color combinations, try the [Color Contrast Checker](#).



## Hex 92765C Background



This preview shows how black text looks on a background with the Hex color 92765C.



This preview shows how white text looks on a background with the Hex color 92765C.

# Color Blindness Simulation

Color vision deficiency is a very complex topic, and I could not describe the different causes any better than Wikipedia does, so if you want to learn more, you should check out their [article about color blindness](#).

## Dichromacy



**Original Color**  
92765C

**Protanopia**  
847B5E

**Deuteranopia**  
91765C



**Tritanopia**  
95727B

# Trichromacy



**Original Color**  
92765C

**Protanomaly**  
89795D

**Deuteranomaly**  
91765C

**Tritanomaly**  
947370

# Monochromacy



**Original Color**  
92765C

**Achromatopsia**  
7B7B7B

**Achromatomaly**  
837970

# CSS Examples

## Text

The CSS property to change the color of the text to Hex 92765C is called "color". The color property can be set on classes, ids or directly on the HTML element.

This example shows how text in the color #92765C looks like.

```
.text, #text, p{  
    color:#92765C  
}
```

If you want to add a text shadow in that color use the text-shadow property, you can generate a text shadow directly with our [CSS Text Shadow Generator](#).

Here you see how black text with a 4 pixel #92765C colored shadow looks like.

```
.shadow{ text-shadow: 4px 4px 2px #92765C
}
```

## Border

The CSS property to change the border of an element to Hex 92765C is called "border". The border property can be set on classes, ids or directly on the HTML element.

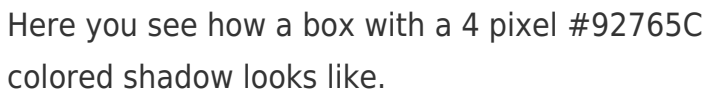
This example shows the color as border, it can be applied via the CSS property "border" or "border-color".

```
.border, #border, table{ border:4px solid
#92765C }
```

If only the border color should be changed use the property border-color.

```
.border{ border-color:#92765C }
```

If you want to add a box shadow in that color use:



Here you see how a box with a 4 pixel #92765C colored shadow looks like.

```
.boxshadow{ -moz-box-shadow:4px 4px 4px  
4px #92765C; -webkit-box-shadow:4px 4px  
4px 4px #92765C; box-shadow:4px 4px 4px  
4px #92765C }
```

# Background

The CSS property to change the background color of an element to Hex 92765C is called "background". The background property can be set on classes, ids or directly on the HTML element.

```
.background, #background, body{  
background:#92765C }
```

If only the background color should be changed can be used:

```
.background{ background-color:#92765C }
```

This example shows the color as background, it is applied via the CSS property "background".

To optimize and compress your CSS code, you can use our [online CSS compressor and optimizer](#) based on csstidy. If you want to create a linear or radial gradient as background or border, check our [CSS Gradient Generator](#).



Hey! You found this booklet interesting? Support Converting Colors with the new Membership Option!

The pro membership hides all ads, plus gives you double the colors in the color bucket, and more awesome pro features!

**[Learn more, Memberships starting at \\$2.50/m!](#)**

**Follow me  
on Twitter!**

@ConvertingColor