

# Converting Colors

Hex(936F55)

Have a look what the booklet for  
Hex(936F55) contains.

<b>Hex(936F55)</b> .....	3
<b><i>Conversions</i></b> .....	4
<b><i>Details</i></b> .....	6
<b><i>Harmonies</i></b> .....	11
<b><i>Previews</i></b> .....	23
<b><i>Color Blindness Simulation</i></b> .....	26
<b><i>CSS Examples</i></b> .....	29

**Color**

**Hex(936F55)**

# Conversions

## Conversions Part 1

Format	Color
Hex	936F55
RGB	147, 111, 85
RGB Percent	58%, 44%, 33%
CMY	0.4235, 0.5647, 0.6667
CMYK	0.00, 0.24, 0.42, 0.42
HSL	25°, 27%, 45%
HSV	25°, 42%, 58%
XYZ	19.3568, 18.2278, 11.0924
YIQ	118.8000, 29.8020, -0.4540

# Conversions

## Conversions Part 2

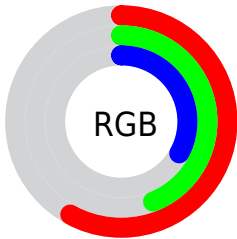
<b>Format</b>	<b>Color</b>
<b>R<sub>YB</sub></b>	147, 130, 85
Decimal	9662293
CIE <sub>Lab</sub>	49.77, 10.68, 19.99
CIE <sub>LCh</sub>	50, 22.662, 61.897
Yxy	18.2278, 0.3977, 0.3745
Android (android.graphics.Color)	4287852373 (0xFF936F55)
YUV	118.8000, -16.6634, 24.7314
Hunter-Lab	42.6940, 6.2143, 14.4815

# Details

The Hex color **936F55** is a dark color, and the websafe version is hex **996666**. A complement of this color would be **557993**, and the grayscale version is **777777**.

A 20% lighter version of the original color is **CAA387**, and **5F3F27** is the 20% darker color. If you saturate the color by 10%, you get **936646**, and if you desaturate by 10%, it is **937864**.

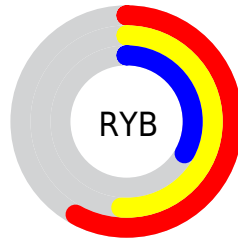
# Distribution



Red (58%)

Green (44%)

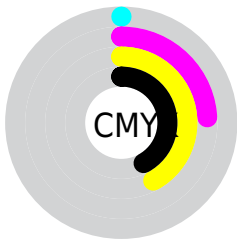
Blue (33%)



Red (58%)

Yellow (51%)

Blue (33%)

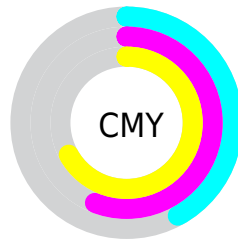


Cyan (0%)

Magenta (24%)

Yellow (42%)

Black (42%)



Cyan (42%)

Magenta (56%)

Yellow (67%)

# Brightness & Saturation Gradients

These gradients show how the Hex color 936F55 changes by changing the brightness by 10 percent. The first figure shows a shift by +10% for each color and the second figure -10%.

Similar to the brightness gradients but the following saturation gradients show a change of the Hex color 936F55 by changing the saturation by 10% instead.



 936F55

 936F55

FFFFFF

 78573E

 CAA387

 5F3F27

 E7BEA1

 462913

 FFDABC

 2E1500

 FFF6D8

 150000

 FFFFF5

 000000

 936F55

 936F55

 936646

 937864

 935E38

 938072

■ 935529

■ 938981

■ 934D1A

■ 939190

■ 93440C

■ 939A9E

■ 933E00

■ 93A2AD

■ 93ABBC

■ 93B3CB

■ 93BCD9

# Harmonies

## Analogous

The Analogous color harmony consists of three colors that are next to each other on the color wheel.



9C6A63



936F55



837650

# Triad

The Triadic color harmony groups three colors that are evenly spaced from another and form a triangle on the color wheel.



936F55



438177



7B7197

# Complementary

The Complementary color scheme is a pair of colors which are on the opposite of each other on the color wheel.



936F55



557993

# Split Complementary

Split-complementary colors differ from the complementary color scheme. The scheme consists of three colors, the original color and two neighbors of the complement color.



5F789D



936F55



39808A

# Square

The Square scheme is like the rectangle color scheme, but the four colors are evenly spaced on the color wheel.



936F55



587F64



457D98



906B89

# Rectangle

The Rectangle color scheme consists of four colors that form a rectangle on the color wheel.



936F55



757A52



457D98



72739A



# Sweetspot

The Sweet Spot groups the original color and five complimentary colors.



936F55



BFB1A6



935579



615851



E0E0E0



616161



# Same Dimension

The Same Dimension uses a secret algorithm to generate beautiful new colors.



936F55



BF875E



938E55



4A4643



8A3A00



0A0400



# Inverse Universe

The Inverse Universe completely reimagines the original color for something new.



557993



5E96BF



555A93



43474A



00508A

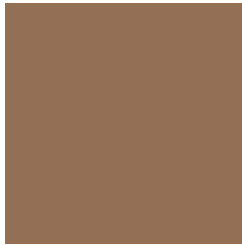


00060A



# Previews

## White Background



This preview shows how the Hex color 936F55 looks on a white background.

## Color Contrast Check

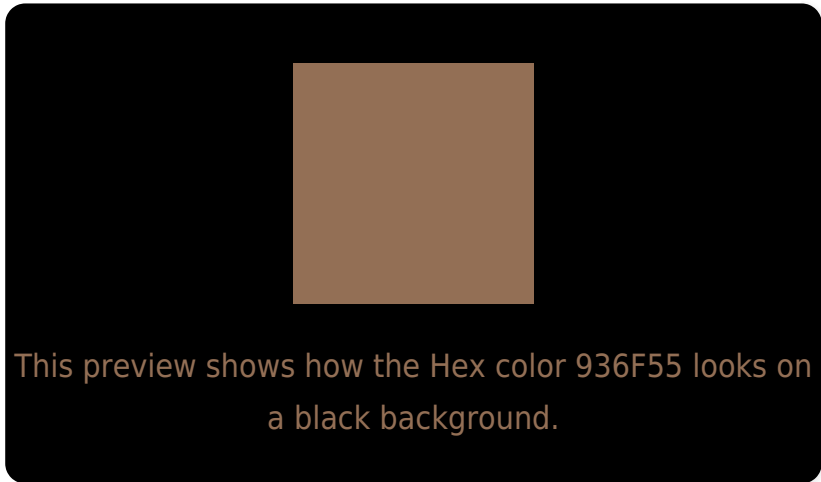
Large Text (above 18pt) WCAG AA ✓ Pass

Any Text WCAG AA ✓ Pass

Large Text (above 18pt) WCAG AAA ✓ Pass

Any Text WCAG AAA × Fail

# Black Background



## Color Contrast Check

Large Text (above 18pt) WCAG AA ✓ Pass

Any Text WCAG AA ✓ Pass

Large Text (above 18pt) WCAG AAA ✓ Pass

Any Text WCAG AAA × Fail

If you want to check with other color combinations, try the [Color Contrast Checker](#).



## Hex 936F55 Background



This preview shows how black text looks on a background with the Hex color 936F55.



This preview shows how white text looks on a background with the Hex color 936F55.

# Color Blindness Simulation

Color vision deficiency is a very complex topic, and I could not describe the different causes any better than Wikipedia does, so if you want to learn more, you should check out their [article about color blindness](#).


## Dichromacy



**Original Color**  
936F55

**Protanopia**  
7F7658

**Deuteranopia**  
8D7254



**Tritanopia**  
966B73

# Trichromacy



**Original Color**  
936F55

**Protanomaly**  
867357

**Deuteranomaly**  
8F7154

**Tritanomaly**  
956C68

# Monochromacy



**Original Color**  
936F55

**Achromatopsia**  
777777

**Achromatomaly**  
81746B

# CSS Examples

## Text

The CSS property to change the color of the text to Hex 936F55 is called "color". The color property can be set on classes, ids or directly on the HTML element.

This example shows how text in the color #936F55 looks like.

```
.text, #text, p{  
    color:#936F55  
}
```

If you want to add a text shadow in that color use the text-shadow property, you can generate a text shadow directly with our [CSS Text Shadow Generator](#).

Here you see how black text with a 4 pixel #936F55 colored shadow looks like.

```
.shadow{ text-shadow: 4px 4px 2px #936F55
}
```

## Border

The CSS property to change the border of an element to Hex 936F55 is called "border". The border property can be set on classes, ids or directly on the HTML element.

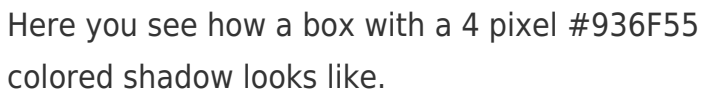
This example shows the color as border, it can be applied via the CSS property "border" or "border-color".

```
.border, #border, table{ border:4px solid
#936F55 }
```

If only the border color should be changed use the property `border-color`.

```
.border{ border-color:#936F55 }
```

If you want to add a box shadow in that color use:



Here you see how a box with a 4 pixel #936F55 colored shadow looks like.

```
.boxshadow{ -moz-box-shadow:4px 4px 4px  
4px #936F55; -webkit-box-shadow:4px 4px  
4px 4px #936F55; box-shadow:4px 4px 4px  
4px #936F55 }
```

# Background

The CSS property to change the background color of an element to Hex 936F55 is called "background". The background property can be set on classes, ids or directly on the HTML element.

```
.background, #background, body{  
background:#936F55 }
```

If only the background color should be changed can be used:

```
.background{ background-color:#936F55 }
```

This example shows the color as background, it is applied via the CSS property "background".

To optimize and compress your CSS code, you can use our [online CSS compressor and optimizer](#) based on csstidy. If you want to create a linear or radial gradient as background or border, check our [CSS Gradient Generator](#).



Hey! You found this booklet interesting? Support Converting Colors with the new Membership Option!

The pro membership hides all ads, plus gives you double the colors in the color bucket, and more awesome pro features!

**[Learn more, Memberships starting at \\$2.50/m!](#)**

**Follow me  
on Twitter!**

@ConvertingColor