

# Converting Colors

Hex(93705D)

Have a look what the booklet for  
Hex(93705D) contains.

<b>Hex(93705D)</b> .....	3
<b><i>Conversions</i></b> .....	4
<b><i>Details</i></b> .....	6
<b><i>Harmonies</i></b> .....	11
<b><i>Previews</i></b> .....	23
<b><i>Color Blindness Simulation</i></b> .....	26
<b><i>CSS Examples</i></b> .....	29

**Color**

**Hex(93705D)**

# Conversions

## Conversions Part 1

<b>Format</b>	<b>Color</b>
Hex	93705D
RGB	147, 112, 93
RGB Percent	58%, 44%, 36%
CMY	0.4235, 0.5608, 0.6353
CMYK	0.00, 0.24, 0.37, 0.42
HSL	21°, 22%, 47%
HSV	21°, 37%, 58%
XYZ	19.8026, 18.5817, 12.8988
YIQ	120.2990, 26.9590, 1.5110

# Conversions

## Conversions Part 2

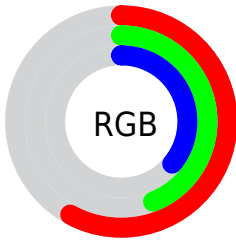
<b>Format</b>	<b>Color</b>
<b>R<sub>YB</sub></b>	147, 122, 93
Decimal	9662557
CIE <sub>Lab</sub>	50.19, 11.09, 15.90
CIE <sub>LCh</sub>	50, 19.389, 55.099
Yxy	18.5817, 0.3861, 0.3623
Android (android.graphics.Color)	4287852637 (0xFF93705D)
YUV	120.2990, -13.4584, 23.4168
Hunter-Lab	43.1065, 6.5643, 12.4331

# Details

The Hex color **93705D** is a dark color, and the websafe version is hex **996666**. A complement of this color would be **5D8093**, and the grayscale version is **787878**.

A 20% lighter version of the original color is **CAA48F**, and **5F402F** is the 20% darker color. If you saturate the color by 10%, you get **93664E**, and if you desaturate by 10%, it is **937A6C**.

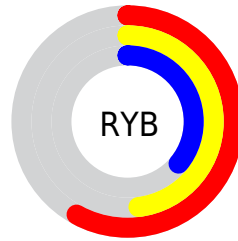
# Distribution



Red (58%)

Green (44%)

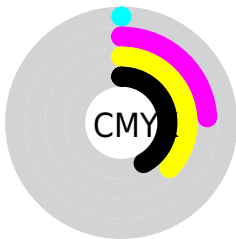
Blue (36%)



Red (58%)

Yellow (48%)

Blue (36%)

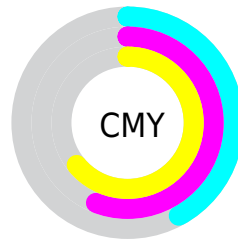


Cyan (0%)

Magenta (24%)

Yellow (37%)

Black (42%)



Cyan (42%)

Magenta (56%)

Yellow (64%)

# Brightness & Saturation Gradients

These gradients show how the Hex color 93705D changes by changing the brightness by 10 percent. The first figure shows a shift by +10% for each color and the second figure -10%.

Similar to the brightness gradients but the following saturation gradients show a change of the Hex color 93705D by changing the saturation by 10% instead.



 93705D

 93705D

FFFFFF

 795845

 CAA48F

 5F402F

 E7BFAA

 462A1A

 FFDBC5

 2F1500

 FFF7E1

 180000

FFFFFFE

 000000

 93705D

 93705D

 93664E

 937A6C

 935D40

 93837A

■ 935331

■ 938D89

■ 934A22

■ 939698

■ 934013

■ 93A0A7

■ 933705

■ 93A9B5

■ 933400

■ 93B3C4

■ 93BCD3

■ 93C6E1

# Harmonies

## Analogous

The Analogous color harmony consists of three colors that are next to each other on the color wheel.



996C6A



93705D



867557

# Triad

The Triadic color harmony groups three colors that are evenly spaced from another and form a triangle on the color wheel.



93705D



518174



767495

# Complementary

The Complementary color scheme is a pair of colors which are on the opposite of each other on the color wheel.



93705D



5D8093

# Split Complementary

Split-complementary colors differ from the complementary color scheme. The scheme consists of three colors, the original color and two neighbors of the complement color.



5F7A98



93705D



478085

# Square

The Square scheme is like the rectangle color scheme, but the four colors are evenly spaced on the color wheel.



93705D



627F64



4D7E92



8A6F8A

# Rectangle

The Rectangle color scheme consists of four colors that form a rectangle on the color wheel.



93705D



7B7957



4D7E92



6F7697



# Sweetspot

The Sweet Spot groups the original color and five complimentary colors.



93705D



BFB2AA



935D80



615954



E0E0E0



616161



# Same Dimension

The Same Dimension uses a secret algorithm to generate beautiful new colors.



93705D



BF896B



938B5D



4A4543



8A3000



0A0400



# Inverse Universe

The Inverse Universe completely reimagines the original color for something new.



5D8093



6BA2BF



5D6593



43474A



00598A

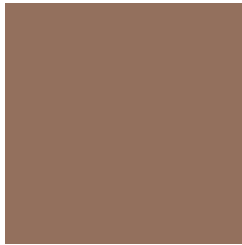


00070A



# Previews

## White Background



This preview shows how the Hex color 93705D looks on a white background.

## Color Contrast Check

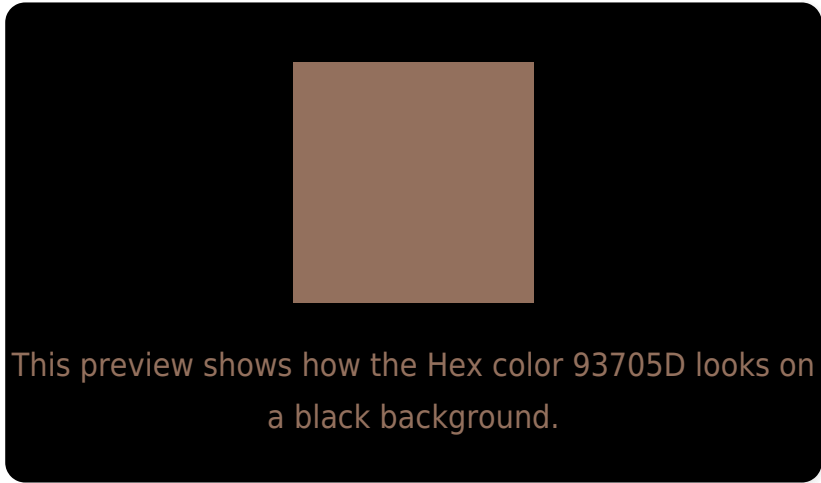
Large Text (above 18pt) WCAG AA ✓ Pass

Any Text WCAG AA × Fail

Large Text (above 18pt) WCAG AAA × Fail

Any Text WCAG AAA × Fail

# Black Background



## Color Contrast Check

Large Text (above 18pt) WCAG AA ✓ Pass

Any Text WCAG AA ✓ Pass

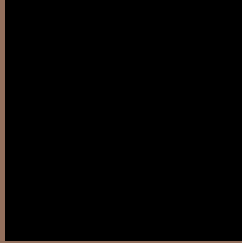
Large Text (above 18pt) WCAG AAA ✓ Pass

Any Text WCAG AAA × Fail

If you want to check with other color combinations, try the [Color Contrast Checker](#).



## Hex 93705D Background



This preview shows how black text looks on a background with the Hex color 93705D.



This preview shows how white text looks on a background with the Hex color 93705D.

# Color Blindness Simulation

Color vision deficiency is a very complex topic, and I could not describe the different causes any better than Wikipedia does, so if you want to learn more, you should check out their [article about color blindness](#).


## Dichromacy



**Original Color**  
93705D

**Protanopia**  
7F7760

**Deuteranopia**  
8C735C



**Tritanopia**  
956D75

# Trichromacy



**Original Color**  
93705D

**Protanomaly**  
86745F

**Deuteranomaly**  
8F725C

**Tritanomaly**  
946E6C

# Monochromacy



**Original Color**  
93705D

**Achromatopsia**  
787878

**Achromatomaly**  
82756E

# CSS Examples

## Text

The CSS property to change the color of the text to Hex 93705D is called "color". The color property can be set on classes, ids or directly on the HTML element.

This example shows how text in the color #93705D looks like.

```
.text, #text, p{  
    color:#93705D  
}
```

If you want to add a text shadow in that color use the text-shadow property, you can generate a text shadow directly with our [CSS Text Shadow Generator](#).

Here you see how black text with a 4 pixel #93705D colored shadow looks like.

```
.shadow{ text-shadow: 4px 4px 2px #93705D
}
```

## Border

The CSS property to change the border of an element to Hex 93705D is called "border". The border property can be set on classes, ids or directly on the HTML element.

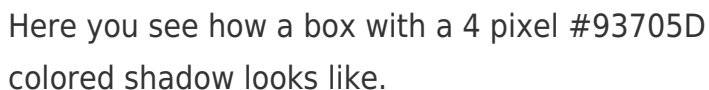
This example shows the color as border, it can be applied via the CSS property "border" or "border-color".

```
.border, #border, table{ border:4px solid
#93705D }
```

If only the border color should be changed use the property `border-color`.

```
.border{ border-color:#93705D }
```

If you want to add a box shadow in that color use:



Here you see how a box with a 4 pixel #93705D colored shadow looks like.

```
.boxshadow{ -moz-box-shadow:4px 4px 4px  
4px #93705D; -webkit-box-shadow:4px 4px  
4px 4px #93705D; box-shadow:4px 4px 4px  
4px #93705D }
```

# Background

The CSS property to change the background color of an element to Hex 93705D is called "background". The background property can be set on classes, ids or directly on the HTML element.

```
.background, #background, body{  
background:#93705D }
```

If only the background color should be changed can be used:

```
.background{ background-color:#93705D }
```

This example shows the color as background, it is applied via the CSS property "background".

To optimize and compress your CSS code, you can use our [online CSS compressor and optimizer](#) based on csstidy. If you want to create a linear or radial gradient as background or border, check our [CSS Gradient Generator](#).



Hey! You found this booklet interesting? Support Converting Colors with the new Membership Option!

The pro membership hides all ads, plus gives you double the colors in the color bucket, and more awesome pro features!

**[Learn more, Memberships starting at \\$2.50/m!](#)**

**Follow me  
on Twitter!**

@ConvertingColor