

# Converting Colors

Hex(956949)

Have a look what the booklet for  
Hex(956949) contains.

<b>Hex(956949)</b> .....	3
<b><i>Conversions</i></b> .....	4
<b><i>Details</i></b> .....	6
<b><i>Harmonies</i></b> .....	11
<b><i>Previews</i></b> .....	23
<b><i>Color Blindness Simulation</i></b> .....	26
<b><i>CSS Examples</i></b> .....	29

**Color**

**Hex(956949)**

# Conversions

## Conversions Part 1

<b>Format</b>	<b>Color</b>
Hex	956949
RGB	149, 105, 73
RGB Percent	58%, 41%, 29%
CMY	0.4157, 0.5882, 0.7137
CMYK	0.00, 0.30, 0.51, 0.42
HSL	25°, 34%, 44%
HSV	25°, 51%, 58%
XYZ	18.6486, 16.9738, 8.5967
YIQ	114.5080, 36.4960, -0.6240

# Conversions

## Conversions Part 2

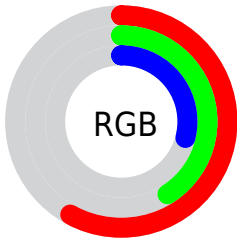
<b>Format</b>	<b>Color</b>
<b>R<sub>YB</sub></b>	149, 128, 73
Decimal	9791817
CIE Lab	48.23, 13.70, 24.94
CIE LCh	48, 28.452, 61.216
Yxy	16.9738, 0.4217, 0.3839
Android (android.graphics.Color)	4287981897 (0xFF956949)
YUV	114.5080, -20.4634, 30.2495
Hunter-Lab	41.1992, 8.6984, 16.4679

# Details

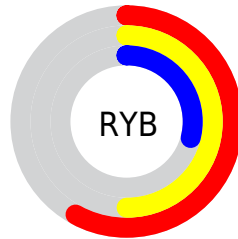
The Hex color **956949** is a dark color, and the websafe version is hex **996633**. A complement of this color would be **497595**, and the grayscale version is **737373**.

A 20% lighter version of the original color is **CD9C7A**, and **603A1C** is the 20% darker color. If you saturate the color by 10%, you get **95603A**, and if you desaturate by 10%, it is **957258**.

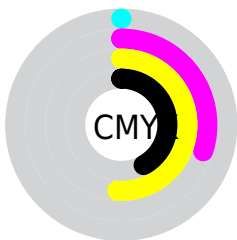
# Distribution



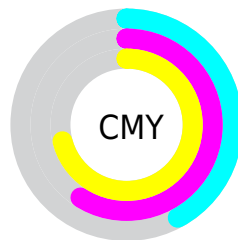
- Red (58%)
- Green (41%)
- Blue (29%)



- Red (58%)
- Yellow (50%)
- Blue (29%)



- Cyan (0%)
- Magenta (30%)
- Yellow (51%)
- Black (42%)



- Cyan (42%)
- Magenta (59%)
- Yellow (71%)

# Brightness & Saturation Gradients

These gradients show how the Hex color 956949 changes by changing the brightness by 10 percent. The first figure shows a shift by +10% for each color and the second figure -10%.

Similar to the brightness gradients but the following saturation gradients show a change of the Hex color 956949 by changing the saturation by 10% instead.



 956949

 956949

FFFFFF

 7A5132

 CD9C7A

 603A1C

 EAB794

 462404

 FFD3AF

 2D0F00

 FFEFCA

 0F0000

 FFFFEE

 000000

 956949

 956949

 95603A

 957258

 95582B

 957A67

■ 954F1C

■ 958376

■ 95460D

■ 958C85

■ 953F00

■ 959494

■ 959DA2

■ 95A5B1

■ 95AEC0

■ 95B7CF

# Harmonies

## Analogous

The Analogous color harmony consists of three colors that are next to each other on the color wheel.



A0625B



956949



817142

# Triad

The Triadic color harmony groups three colors that are evenly spaced from another and form a triangle on the color wheel.



956949



2A7F73



766C9C

# Complementary

The Complementary color scheme is a pair of colors which are on the opposite of each other on the color wheel.



956949



497595

# Split Complementary

Split-complementary colors differ from the complementary color scheme. The scheme consists of three colors, the original color and two neighbors of the complement color.



5175A2



956949



067F8B

# Square

The Square scheme is like the rectangle color scheme, but the four colors are evenly spaced on the color wheel.



956949



4B7D5B



257B9C



92648A

# Rectangle

The Rectangle color scheme consists of four colors that form a rectangle on the color wheel.



956949



717645



257B9C



6B6F9F



# Sweetspot

The Sweet Spot groups the original color and five complimentary colors.



956949



C2B1A5



954975



61574F



E0E0E0



616161



# Same Dimension

The Same Dimension uses a secret algorithm to generate beautiful new colors.



956949



C27D4C



958F49



4A4643



8A3A00



0A0400



# Inverse Universe

The Inverse Universe completely reimagines the original color for something new.



497595



4C90C2



494F95



43474A



00508A

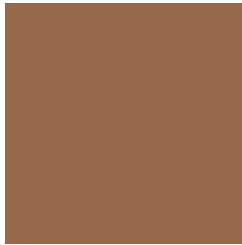


00060A



# Previews

## White Background



This preview shows how the Hex color 956949 looks on a white background.

## Color Contrast Check

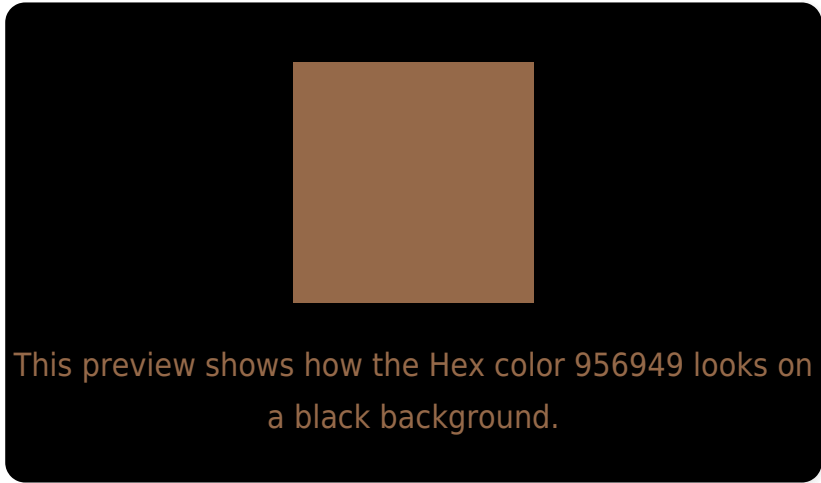
Large Text (above 18pt) WCAG AA ✓ Pass

Any Text WCAG AA ✓ Pass

Large Text (above 18pt) WCAG AAA ✓ Pass

Any Text WCAG AAA × Fail

# Black Background



## Color Contrast Check

Large Text (above 18pt) WCAG AA ✓ Pass

Any Text WCAG AA × Fail

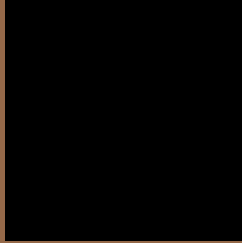
Large Text (above 18pt) WCAG AAA × Fail

Any Text WCAG AAA × Fail

If you want to check with other color combinations, try the [Color Contrast Checker](#).



## Hex 956949 Background



This preview shows how black text looks on a background with the Hex color 956949.



This preview shows how white text looks on a background with the Hex color 956949.

# Color Blindness Simulation

Color vision deficiency is a very complex topic, and I could not describe the different causes any better than Wikipedia does, so if you want to learn more, you should check out their [article about color blindness](#).


## Dichromacy



**Original Color**  
956949

**Protanopia**  
7C734D

**Deuteranopia**  
8B6E48



**Tritanopia**  
98656C

# Trichromacy



**Original Color**  
956949

**Protanomaly**  
856F4C

**Deuteranomaly**  
8F6C48

**Tritanomaly**  
97665F

# Monochromacy



**Original Color**  
956949

**Achromatopsia**  
737373

**Achromatomaly**  
7F6F64

# CSS Examples

## Text

The CSS property to change the color of the text to Hex 956949 is called "color". The color property can be set on classes, ids or directly on the HTML element.

This example shows how text in the color #956949 looks like.

```
.text, #text, p{  
    color:#956949  
}
```

If you want to add a text shadow in that color use the text-shadow property, you can generate a text shadow directly with our [CSS Text Shadow Generator](#).

Here you see how black text with a 4 pixel #956949 colored shadow looks like.

```
.shadow{ text-shadow: 4px 4px 2px #956949
}
```

## Border

The CSS property to change the border of an element to Hex 956949 is called "border". The border property can be set on classes, ids or directly on the HTML element.

This example shows the color as border, it can be applied via the CSS property "border" or "border-color".

```
.border, #border, table{ border:4px solid
#956949 }
```

If only the border color should be changed use the property `border-color`.

```
.border{ border-color:#956949 }
```

If you want to add a box shadow in that color use:

Here you see how a box with a 4 pixel #956949 colored shadow looks like.

```
.boxshadow{ -moz-box-shadow:4px 4px 4px  
4px #956949; -webkit-box-shadow:4px 4px  
4px 4px #956949; box-shadow:4px 4px 4px  
4px #956949 }
```

# Background

The CSS property to change the background color of an element to Hex 956949 is called "background". The background property can be set on classes, ids or directly on the HTML element.

```
.background, #background, body{  
background:#956949 }
```

If only the background color should be changed can be used:

```
.background{ background-color:#956949 }
```

This example shows the color as background, it is applied via the CSS property "background".

To optimize and compress your CSS code, you can use our [online CSS compressor and optimizer](#) based on csstidy. If you want to create a linear or radial gradient as background or border, check our [CSS Gradient Generator](#).



Hey! You found this booklet interesting? Support Converting Colors with the new Membership Option!

The pro membership hides all ads, plus gives you double the colors in the color bucket, and more awesome pro features!

**[Learn more, Memberships starting at \\$2.50/m!](#)**

**Follow me  
on Twitter!**

@ConvertingColor