

# Converting Colors

Hex(96694E)

Have a look what the booklet for  
Hex(96694E) contains.

<b>Hex(96694E)</b> .....	3
<b><i>Conversions</i></b> .....	4
<b><i>Details</i></b> .....	6
<b><i>Harmonies</i></b> .....	11
<b><i>Previews</i></b> .....	23
<b><i>Color Blindness Simulation</i></b> .....	26
<b><i>CSS Examples</i></b> .....	29

**Color**

**Hex(96694E)**

# Conversions

## Conversions Part 1

<b>Format</b>	<b>Color</b>
Hex	96694E
RGB	150, 105, 78
RGB Percent	59%, 41%, 31%
CMY	0.4118, 0.5882, 0.6941
CMYK	0.00, 0.30, 0.48, 0.41
HSL	22°, 32%, 45%
HSV	22°, 48%, 59%
XYZ	19.0044, 17.1372, 9.5139
YIQ	115.3770, 35.4870, 1.1430

# Conversions

## Conversions Part 2

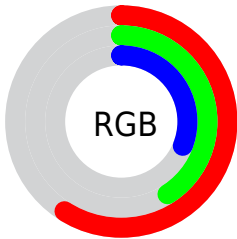
<b>Format</b>	<b>Color</b>
<b>R<sub>YB</sub></b>	150, 121, 78
Decimal	9857358
CIE <sub>Lab</sub>	48.43, 14.65, 22.34
CIE <sub>LCh</sub>	48, 26.716, 56.746
Yxy	17.1372, 0.4163, 0.3754
Android (android.graphics.Color)	4288047438 (0xFF96694E)
YUV	115.3770, -18.4269, 30.3644
Hunter-Lab	41.3971, 9.4999, 15.3520

# Details

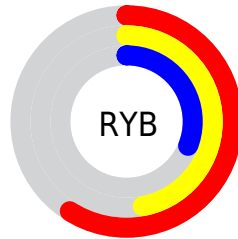
The Hex color **96694E** is a dark color, and the websafe version is hex **996633**. A complement of this color would be **4E7B96**, and the grayscale version is **747474**.

A 20% lighter version of the original color is **CE9C7F**, and **613A21** is the 20% darker color. If you saturate the color by 10%, you get **96603F**, and if you desaturate by 10%, it is **96725D**.

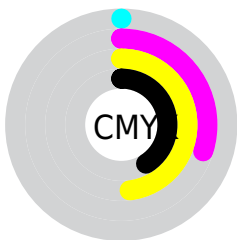
# Distribution



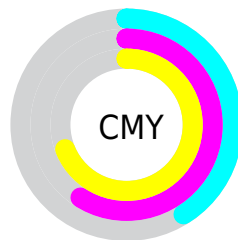
- Red (59%)
- Green (41%)
- Blue (31%)



- Red (59%)
- Yellow (47%)
- Blue (31%)



- Cyan (0%)
- Magenta (30%)
- Yellow (48%)
- Black (41%)



- Cyan (41%)
- Magenta (59%)
- Yellow (69%)

# Brightness & Saturation Gradients

These gradients show how the Hex color 96694E changes by changing the brightness by 10 percent. The first figure shows a shift by +10% for each color and the second figure -10%.

Similar to the brightness gradients but the following saturation gradients show a change of the Hex color 96694E by changing the saturation by 10% instead.



 96694E

 96694E

FFFFFF

 7B5137

 CE9C7F

 613A21

 EBB799

 47240B

 FFD3B4

 2F0F00

 FFEFD0

 120000

 FFFFEC

 000000

 96694E

 96694E

 96603F

 96725D

 965630

 967C6C

 964D21

 96857B

 964312

 968F8A

 963A03

 969899

 963800

 96A1A8

 96ABB7

 96B4C6

 96BDD5

# Harmonies

## Analogous

The Analogous color harmony consists of three colors that are next to each other on the color wheel.



9F6360



96694E



847146

# Triad

The Triadic color harmony groups three colors that are evenly spaced from another and form a triangle on the color wheel.



96694E



367F70



726E9B

# Complementary

The Complementary color scheme is a pair of colors which are on the opposite of each other on the color wheel.



96694E



4E7B96

# Split Complementary

Split-complementary colors differ from the complementary color scheme. The scheme consists of three colors, the original color and two neighbors of the complement color.



4F76A0



96694E



1E7F87

# Square

The Square scheme is like the rectangle color scheme, but the four colors are evenly spaced on the color wheel.



96694E



537D5A



2B7C98



8D668C

# Rectangle

The Rectangle color scheme consists of four colors that form a rectangle on the color wheel.



96694E



757647



2B7C98



67719E



# Sweetspot

The Sweet Spot groups the original color and five complimentary colors.



96694E



C2B1A7



964E7C



615750



E0E0E0



616161



# Same Dimension

The Same Dimension uses a secret algorithm to generate beautiful new colors.



96694E



C27C51



968C4E



4A4543



8A3400



0A0400



# Inverse Universe

The Inverse Universe completely reimagines the original color for something new.



4E7B96



5198C2



4E5896



43474A



00568A

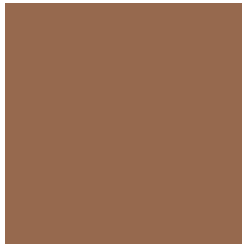


00060A



# Previews

## White Background



This preview shows how the Hex color 96694E looks on a white background.

## Color Contrast Check

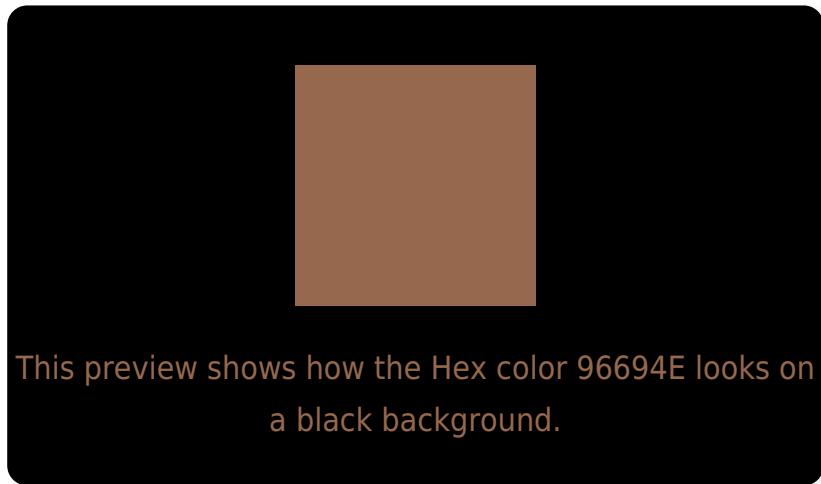
Large Text (above 18pt) WCAG AA ✓ Pass

Any Text WCAG AA ✓ Pass

Large Text (above 18pt) WCAG AAA ✓ Pass

Any Text WCAG AAA × Fail

# Black Background



## Color Contrast Check

Large Text (above 18pt) WCAG AA ✓ Pass

Any Text WCAG AA × Fail

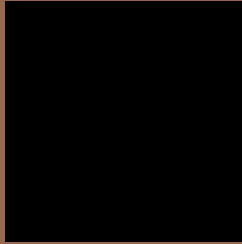
Large Text (above 18pt) WCAG AAA × Fail

Any Text WCAG AAA × Fail

If you want to check with other color combinations, try the [Color Contrast Checker](#).



## Hex 96694E Background



This preview shows how black text looks on a background with the Hex color 96694E.



This preview shows how white text looks on a background with the Hex color 96694E.

# Color Blindness Simulation

Color vision deficiency is a very complex topic, and I could not describe the different causes any better than Wikipedia does, so if you want to learn more, you should check out their [article about color blindness](#).


## Dichromacy



**Original Color**  
96694E

**Protanopia**  
7C7352

**Deuteranopia**  
8A6E4D



**Tritanopia**  
99656D

# Trichromacy



**Original Color**  
96694E

**Protanomaly**  
856F51

**Deuteranomaly**  
8E6C4D

**Tritanomaly**  
986662

# Monochromacy



**Original Color**  
96694E

**Achromatopsia**  
737373

**Achromatomaly**  
806F66

# CSS Examples

## Text

The CSS property to change the color of the text to Hex 96694E is called "color". The color property can be set on classes, ids or directly on the HTML element.

This example shows how text in the color #96694E looks like.

```
.text, #text, p{  
    color:#96694E  
}
```

If you want to add a text shadow in that color use the text-shadow property, you can generate a text shadow directly with our [CSS Text Shadow Generator](#).

Here you see how black text with a 4 pixel #96694E colored shadow looks like.

```
.shadow{ text-shadow: 4px 4px 2px #96694E
}
```

## Border

The CSS property to change the border of an element to Hex 96694E is called "border". The border property can be set on classes, ids or directly on the HTML element.

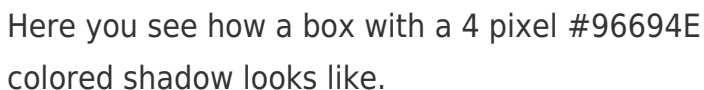
This example shows the color as border, it can be applied via the CSS property "border" or "border-color".

```
.border, #border, table{ border:4px solid
#96694E }
```

If only the border color should be changed use the property `border-color`.

```
.border{ border-color:#96694E }
```

If you want to add a box shadow in that color use:



Here you see how a box with a 4 pixel #96694E colored shadow looks like.

```
.boxshadow{ -moz-box-shadow:4px 4px 4px  
4px #96694E; -webkit-box-shadow:4px 4px  
4px 4px #96694E; box-shadow:4px 4px 4px  
4px #96694E }
```

# Background

The CSS property to change the background color of an element to Hex 96694E is called "background". The background property can be set on classes, ids or directly on the HTML element.

```
.background, #background, body{  
background:#96694E }
```

If only the background color should be changed can be used:

```
.background{ background-color:#96694E }
```

This example shows the color as background, it is applied via the CSS property "background".

To optimize and compress your CSS code, you can use our [online CSS compressor and optimizer](#) based on csstidy. If you want to create a linear or radial gradient as background or border, check our [CSS Gradient Generator](#).



Hey! You found this booklet interesting? Support Converting Colors with the new Membership Option!

The pro membership hides all ads, plus gives you double the colors in the color bucket, and more awesome pro features!

**[Learn more, Memberships starting at \\$2.50/m!](#)**

**Follow me  
on Twitter!**

@ConvertingColor