

# Converting Colors

Hex(997459)

Have a look what the booklet for  
Hex(997459) contains.

<b>Hex(997459)</b> .....	3
<b><i>Conversions</i></b> .....	4
<b><i>Details</i></b> .....	6
<b><i>Harmonies</i></b> .....	11
<b><i>Previews</i></b> .....	23
<b><i>Color Blindness Simulation</i></b> .....	26
<b><i>CSS Examples</i></b> .....	29

**Color**

**Hex(997459)**

# Conversions

## Conversions Part 1

<b>Format</b>	<b>Color</b>
Hex	997459
RGB	153, 116, 89
RGB Percent	60%, 45%, 35%
CMY	0.4000, 0.5451, 0.6510
CMYK	0.00, 0.24, 0.42, 0.40
HSL	25°, 26%, 47%
HSV	25°, 42%, 60%
XYZ	21.1854, 19.9844, 12.1920
YIQ	123.9850, 30.7190, -0.5530

# Conversions

## Conversions Part 2

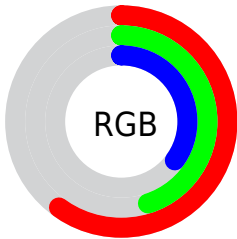
<b>Format</b>	<b>Color</b>
<b>R<sub>YB</sub></b>	153, 136, 89
Decimal	10056793
CIE Lab	51.82, 10.83, 20.53
CIE LCh	52, 23.215, 62.184
Yxy	19.9844, 0.3970, 0.3745
Android (android.graphics.Color)	4288246873 (0xFF997459)
YUV	123.9850, -17.2476, 25.4462
Hunter-Lab	44.7039, 6.3605, 15.1227

# Details

The Hex color **997459** is a dark color, and the websafe version is hex **996666**. A complement of this color would be **597E99**, and the grayscale version is **7C7C7C**.

A 20% lighter version of the original color is **D1A88B**, and **64442B** is the 20% darker color. If you saturate the color by 10%, you get **996B4A**, and if you desaturate by 10%, it is **997D68**.

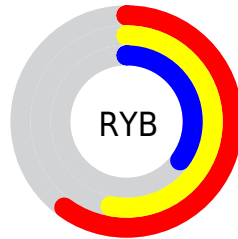
# Distribution



Red (60%)

Green (45%)

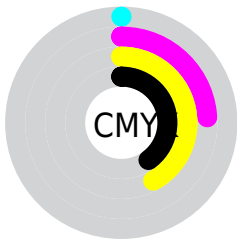
Blue (35%)



Red (60%)

Yellow (53%)

Blue (35%)

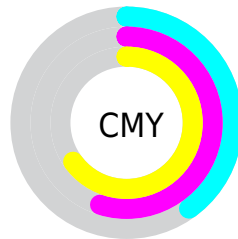


Cyan (0%)

Magenta (24%)

Yellow (42%)

Black (40%)



Cyan (40%)

Magenta (55%)

Yellow (65%)

# Brightness & Saturation Gradients

These gradients show how the Hex color 997459 changes by changing the brightness by 10 percent. The first figure shows a shift by +10% for each color and the second figure -10%.

Similar to the brightness gradients but the following saturation gradients show a change of the Hex color 997459 by changing the saturation by 10% instead.



 997459

 997459

FFFFFF

 7E5B41

 D1A88B

 64442B

 EDC3A6

 4B2E16

 FFDFC1

 341800

 FFFCDD

 1C0000

 FFFFF9

 000000

 997459

 997459

 996B4A

 997D68

 99623A

 998678

■ 99592B

■ 998F87

■ 99511C

■ 999796

■ 99480D

■ 99A0A5

■ 994100

■ 99A9B5

■ 99B2C4

■ 99BBD3

■ 99C4E3

# Harmonies

## Analogous

The Analogous color harmony consists of three colors that are next to each other on the color wheel.



A26F67



997459



887B54

# Triad

The Triadic color harmony groups three colors that are evenly spaced from another and form a triangle on the color wheel.



997459



47877C



80769D

# Complementary

The Complementary color scheme is a pair of colors which are on the opposite of each other on the color wheel.



997459



597E99

# Split Complementary

Split-complementary colors differ from the complementary color scheme. The scheme consists of three colors, the original color and two neighbors of the complement color.



647DA3



997459



3C8690

# Square

The Square scheme is like the rectangle color scheme, but the four colors are evenly spaced on the color wheel.



997459



5C8568



49839E



96708E

# Rectangle

The Rectangle color scheme consists of four colors that form a rectangle on the color wheel.



997459



7A7F56



49839E



7778A0



# Sweetspot

The Sweet Spot groups the original color and five complimentary colors.



997459



C7B8AD



99597E



635A54



E3E3E3



636363



# Same Dimension

The Same Dimension uses a secret algorithm to generate beautiful new colors.



997459



C78D63



999459



4D4845



8C3B00



0D0500



# Inverse Universe

The Inverse Universe completely reimagines the original color for something new.



597E99



639DC7



595E99



45494D



00518C

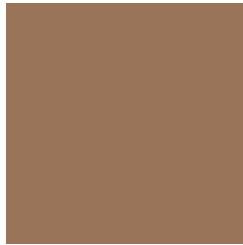


00070D



# Previews

## White Background



This preview shows how the Hex color 997459 looks on a white background.

## Color Contrast Check

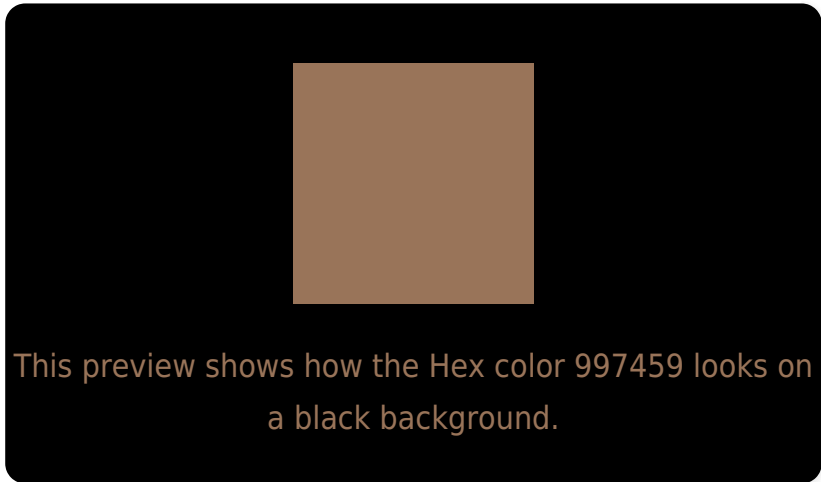
Large Text (above 18pt) WCAG AA ✓ Pass

Any Text WCAG AA × Fail

Large Text (above 18pt) WCAG AAA × Fail

Any Text WCAG AAA × Fail

# Black Background



## Color Contrast Check

Large Text (above 18pt) WCAG AA ✓ Pass

Any Text WCAG AA ✓ Pass

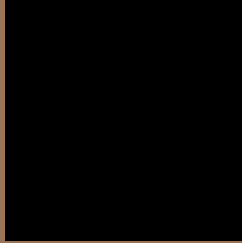
Large Text (above 18pt) WCAG AAA ✓ Pass

Any Text WCAG AAA × Fail

If you want to check with other color combinations, try the [Color Contrast Checker](#).



## Hex 997459 Background



This preview shows how black text looks on a background with the Hex color 997459.



This preview shows how white text looks on a background with the Hex color 997459.

# Color Blindness Simulation

Color vision deficiency is a very complex topic, and I could not describe the different causes any better than Wikipedia does, so if you want to learn more, you should check out their [article about color blindness](#).

## Dichromacy



**Original Color**  
997459

**Protanopia**  
857C5C

**Deuteranopia**  
937758



**Tritanopia**  
9C7078

# Trichromacy



**Original Color**  
997459

**Protanomaly**  
8C795B

**Deuteranomaly**  
957658

**Tritanomaly**  
9B716D

# Monochromacy



**Original Color**  
997459

**Achromatopsia**  
7C7C7C

**Achromatomaly**  
87796F

# CSS Examples

## Text

The CSS property to change the color of the text to Hex 997459 is called "color". The color property can be set on classes, ids or directly on the HTML element.

This example shows how text in the color #997459 looks like.

```
.text, #text, p{  
    color:#997459  
}
```

If you want to add a text shadow in that color use the text-shadow property, you can generate a text shadow directly with our [CSS Text Shadow Generator](#).

Here you see how black text with a 4 pixel #997459 colored shadow looks like.

```
.shadow{ text-shadow: 4px 4px 2px #997459
}
```

## Border

The CSS property to change the border of an element to Hex 997459 is called "border". The border property can be set on classes, ids or directly on the HTML element.

This example shows the color as border, it can be applied via the CSS property "border" or "border-color".

```
.border, #border, table{ border:4px solid
#997459 }
```

If only the border color should be changed use the property border-color.

```
.border{ border-color:#997459 }
```

If you want to add a box shadow in that color use:

Here you see how a box with a 4 pixel #997459 colored shadow looks like.

```
.boxshadow{ -moz-box-shadow:4px 4px 4px  
4px #997459; -webkit-box-shadow:4px 4px  
4px 4px #997459; box-shadow:4px 4px 4px  
4px #997459 }
```

# Background

The CSS property to change the background color of an element to Hex 997459 is called "background". The background property can be set on classes, ids or directly on the HTML element.

```
.background, #background, body{  
background:#997459 }
```

If only the background color should be changed can be used:

```
.background{ background-color:#997459 }
```

This example shows the color as background, it is applied via the CSS property "background".

To optimize and compress your CSS code, you can use our [online CSS compressor and optimizer](#) based on csstidy. If you want to create a linear or radial gradient as background or border, check our [CSS Gradient Generator](#).



Hey! You found this booklet interesting? Support Converting Colors with the new Membership Option!

The pro membership hides all ads, plus gives you double the colors in the color bucket, and more awesome pro features!

**[Learn more, Memberships starting at \\$2.50/m!](#)**

**Follow me  
on Twitter!**

@ConvertingColor