

Converting Colors

Hex(997654)

Have a look what the booklet for
Hex(997654) contains.

Hex(997654)	3
<i>Conversions</i>	4
<i>Details</i>	6
<i>Harmonies</i>	11
<i>Previews</i>	23
<i>Color Blindness Simulation</i>	26
<i>CSS Examples</i>	29

Color

Hex(997654)

Conversions

Conversions Part 1

Format	Color
Hex	997654
RGB	153, 118, 84
RGB Percent	60%, 46%, 33%
CMY	0.4000, 0.5373, 0.6706
CMYK	0.00, 0.23, 0.45, 0.40
HSL	30°, 29%, 46%
HSV	30°, 45%, 60%
XYZ	21.2155, 20.3693, 11.2010
YIQ	124.5890, 31.7740, -3.1540

Conversions

Conversions Part 2

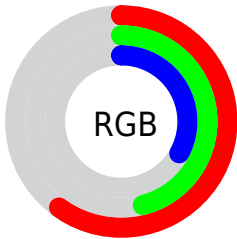
Format	Color
R_{YB}	153, 151, 84
Decimal	10057300
CIE _{Lab}	52.25, 9.11, 23.96
CIE _{LCh}	52, 25.638, 69.182
Yxy	20.3693, 0.4019, 0.3859
Android (android.graphics.Color)	4288247380 (0xFF997654)
YUV	124.5890, -20.0104, 24.9164
Hunter-Lab	45.1323, 4.9267, 16.8780

Details

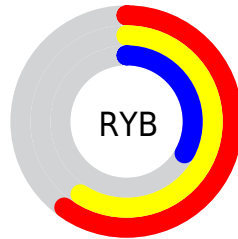
The Hex color **997654** is a dark color, and the websafe version is hex **996633**. A complement of this color would be **547799**, and the grayscale version is **7D7D7D**.

A 20% lighter version of the original color is **D1AA86**, and **644626** is the 20% darker color. If you saturate the color by 10%, you get **996E45**, and if you desaturate by 10%, it is **997E63**.

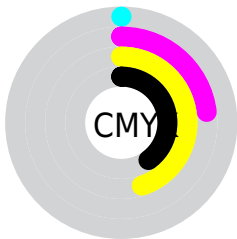
Distribution



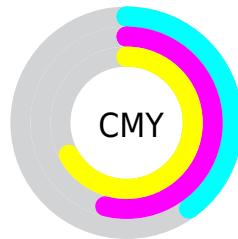
- Red (60%)
- Green (46%)
- Blue (33%)



- Red (60%)
- Yellow (59%)
- Blue (33%)



- Cyan (0%)
- Magenta (23%)
- Yellow (45%)
- Black (40%)



- Cyan (40%)
- Magenta (54%)
- Yellow (67%)

Brightness & Saturation Gradients

These gradients show how the Hex color 997654 changes by changing the brightness by 10 percent. The first figure shows a shift by +10% for each color and the second figure -10%.

Similar to the brightness gradients but the following saturation gradients show a change of the Hex color 997654 by changing the saturation by 10% instead.

 997654

 997654

FFFFFF

 7E5D3D

 D1AA86

 644626

 EEC5A0

 4B2F11

 FFE1BB

 331A00

 FFFED7

 1B0100

 FFFFF4

 000000

 997654

 997654

 996E45

 997E63

 996635

 998673

 995F26

 998D82

 995717

 999591

 994F08

 999DA1

 994B00

 99A5B0

 99ACBF

 99B4CE

 99BCDE

Harmonies

Analogous

The Analogous color harmony consists of three colors that are next to each other on the color wheel.



A66F62



997654



857D51

Triad

The Triadic color harmony groups three colors that are evenly spaced from another and form a triangle on the color wheel.



997654



3B8983



88759F

Complementary

The Complementary color scheme is a pair of colors which are on the opposite of each other on the color wheel.



997654



547799

Split Complementary

Split-complementary colors differ from the complementary color scheme. The scheme consists of three colors, the original color and two neighbors of the complement color.



697CA8



997654



338798

Square

The Square scheme is like the rectangle color scheme, but the four colors are evenly spaced on the color wheel.



997654



53876C



4883A5



9E6E8D

Rectangle

The Rectangle color scheme consists of four colors that form a rectangle on the color wheel.



997654



758256



4883A5



7F77A3

Sweetspot

The Sweet Spot groups the original color and five complimentary colors.



997654



C7B9AB



995478



635B53



E3E3E3



636363

Same Dimension

The Same Dimension uses a secret algorithm to generate beautiful new colors.



997654



C7905B



999854



4D4945



8C4500



0D0600

Inverse Universe

The Inverse Universe completely reimagines the original color for something new.



547799



5B92C7



545599



45494D



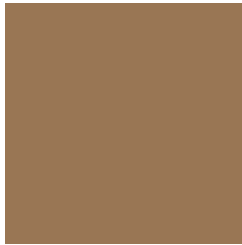
00478C



00060D

Previews

White Background



This preview shows how the Hex color 997654 looks on a white background.

Color Contrast Check

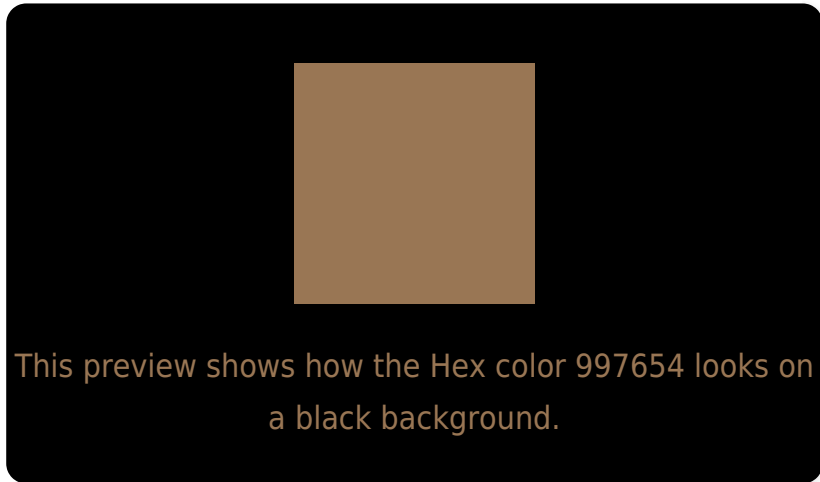
Large Text (above 18pt) WCAG AA ✓ Pass

Any Text WCAG AA × Fail

Large Text (above 18pt) WCAG AAA × Fail

Any Text WCAG AAA × Fail

Black Background



Color Contrast Check

Large Text (above 18pt) WCAG AA ✓ Pass

Any Text WCAG AA ✓ Pass

Large Text (above 18pt) WCAG AAA ✓ Pass

Any Text WCAG AAA × Fail

If you want to check with other color combinations, try the [Color Contrast Checker](#).

Hex 997654 Background



This preview shows how black text looks on a background with the Hex color 997654.



This preview shows how white text looks on a background with the Hex color 997654.

Color Blindness Simulation

Color vision deficiency is a very complex topic, and I could not describe the different causes any better than Wikipedia does, so if you want to learn more, you should check out their [article about color blindness](#).

Dichromacy



Original Color
997654

Protanopia
877D57

Deuteranopia
967754

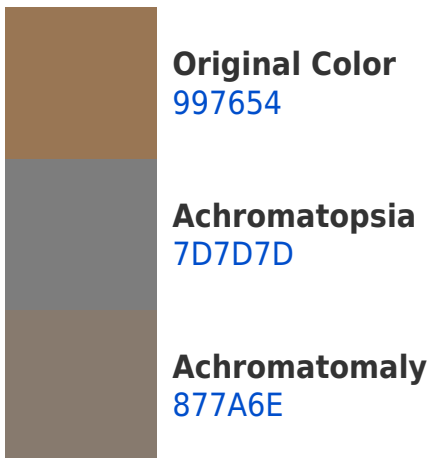


Tritanopia
9D717A

Trichromacy



Monochromacy



CSS Examples

Text

The CSS property to change the color of the text to Hex 997654 is called "color". The color property can be set on classes, ids or directly on the HTML element.

This example shows how text in the color #997654 looks like.

```
.text, #text, p{  
    color:#997654  
}
```

If you want to add a text shadow in that color use the text-shadow property, you can generate a text shadow directly with our [CSS Text Shadow Generator](#).

Here you see how black text with a 4 pixel #997654 colored shadow looks like.

```
.shadow{ text-shadow: 4px 4px 2px #997654
}
```

Border

The CSS property to change the border of an element to Hex 997654 is called "border". The border property can be set on classes, ids or directly on the HTML element.

This example shows the color as border, it can be applied via the CSS property "border" or "border-color".

```
.border, #border, table{ border:4px solid
#997654 }
```

If only the border color should be changed use the property `border-color`.

```
.border{ border-color:#997654 }
```

If you want to add a box shadow in that color use:

Here you see how a box with a 4 pixel #997654 colored shadow looks like.

```
.boxshadow{ -moz-box-shadow:4px 4px 4px  
4px #997654; -webkit-box-shadow:4px 4px  
4px 4px #997654; box-shadow:4px 4px 4px  
4px #997654 }
```

Background

The CSS property to change the background color of an element to Hex 997654 is called "background". The background property can be set on classes, ids or directly on the HTML element.

```
.background, #background, body{  
background:#997654 }
```

If only the background color should be changed can be used:

```
.background{ background-color:#997654 }
```

This example shows the color as background, it is applied via the CSS property "background".

To optimize and compress your CSS code, you can use our [online CSS compressor and optimizer](#) based on csstidy. If you want to create a linear or radial gradient as background or border, check our [CSS Gradient Generator](#).

Hey! You found this booklet interesting? Support Converting Colors with the new Membership Option!

The pro membership hides all ads, plus gives you double the colors in the color bucket, and more awesome pro features!

[Learn more, Memberships starting at \\$2.50/m!](#)

**Follow me
on Twitter!**

@ConvertingColor