

# Converting Colors

Hex(9A6A4A)

Have a look what the booklet for  
Hex(9A6A4A) contains.

<b>Hex(9A6A4A)</b> .....	3
<b><i>Conversions</i></b> .....	4
<b><i>Details</i></b> .....	6
<b><i>Harmonies</i></b> .....	11
<b><i>Previews</i></b> .....	23
<b><i>Color Blindness Simulation</i></b> .....	26
<b><i>CSS Examples</i></b> .....	29

**Color**

**Hex(9A6A4A)**

# Conversions

## Conversions Part 1

<b>Format</b>	<b>Color</b>
Hex	9A6A4A
RGB	154, 106, 74
RGB Percent	60%, 42%, 29%
CMY	0.3961, 0.5843, 0.7098
CMYK	0.00, 0.31, 0.52, 0.40
HSL	24°, 35%, 45%
HSV	24°, 52%, 60%
XYZ	19.7165, 17.6725, 8.8505
YIQ	116.7040, 38.8800, 0.2240

# Conversions

## Conversions Part 2

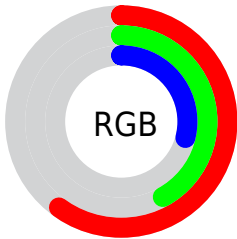
<b>Format</b>	<b>Color</b>
<b>RYB</b>	154, 127, 74
Decimal	10119754
CIELab	49.10, 15.40, 25.60
CIELCh	49, 29.872, 58.978
Yxy	17.6725, 0.4264, 0.3822
Android (android.graphics.Color)	4288309834 (0xFF9A6A4A)
YUV	116.7040, -21.0531, 32.7086
Hunter-Lab	42.0387, 10.1503, 16.9446

# Details

The Hex color **9A6A4A** is a dark color, and the websafe version is hex **996633**. A complement of this color would be **4A7A9A**, and the grayscale version is **757575**.

A 20% lighter version of the original color is **D39D7B**, and **643A1D** is the 20% darker color. If you saturate the color by 10%, you get **9A613B**, and if you desaturate by 10%, it is **9A7359**.

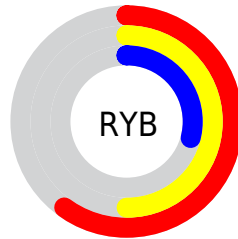
# Distribution



Red (60%)

Green (42%)

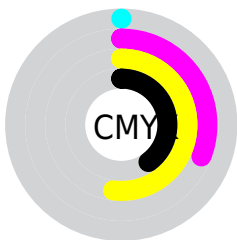
Blue (29%)



Red (60%)

Yellow (50%)

Blue (29%)

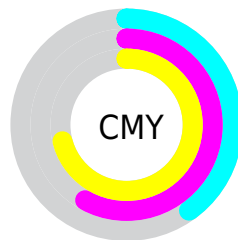


Cyan (0%)

Magenta (31%)

Yellow (52%)

Black (40%)



Cyan (40%)

Magenta (58%)

Yellow (71%)

# Brightness & Saturation Gradients

These gradients show how the Hex color 9A6A4A changes by changing the brightness by 10 percent. The first figure shows a shift by +10% for each color and the second figure -10%.

Similar to the brightness gradients but the following saturation gradients show a change of the Hex color 9A6A4A by changing the saturation by 10% instead.





9A6A4A



9A6A4A

FFFFFF



7F5233



D39D7B



643A1D



F0B895



4A2406



FFD4B0



311000



FFF1CB



180001



FFFFE8



000000



9A6A4A



9A6A4A



9A613B



9A7359



9A582B



9A7C69

 9A4E1C

 9A8678

 9A450C

 9A8F88

 9A3E00

 9A9897

 9AA1A6

 9AABB6

 9AB4C5

 9ABDD5

# Harmonies

## Analogous

The Analogous color harmony consists of three colors that are next to each other on the color wheel.



A5635D



9A6A4A



867342

# Triad

The Triadic color harmony groups three colors that are evenly spaced from another and form a triangle on the color wheel.



9A6A4A



298273



766EA1

# Complementary

The Complementary color scheme is a pair of colors which are on the opposite of each other on the color wheel.



9A6A4A



4A7A9A

# Split Complementary

Split-complementary colors differ from the complementary color scheme. The scheme consists of three colors, the original color and two neighbors of the complement color.



4D77A7



9A6A4A



00828C

# Square

The Square scheme is like the rectangle color scheme, but the four colors are evenly spaced on the color wheel.



9A6A4A



4E805A



1A7E9F



94668F

# Rectangle

The Rectangle color scheme consists of four colors that form a rectangle on the color wheel.



9A6A4A



757844



1A7E9F



6A72A4



# Sweetspot

The Sweet Spot groups the original color and five complimentary colors.



9A6A4A



C9B6A9



9A4A7A



665A53



E6E6E6



666666



# Same Dimension

The Same Dimension uses a secret algorithm to generate beautiful new colors.



9A6A4A



C97F4D



9A924A



4D4845



8C3800



0D0500



# Inverse Universe

The Inverse Universe completely reimagines the original color for something new.



4A7A9A



4D97C9



4A529A



45494D



00548C

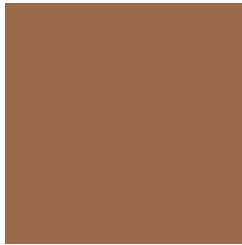


00080D



# Previews

## White Background



This preview shows how the Hex color 9A6A4A looks on a white background.

## Color Contrast Check

Large Text (above 18pt) WCAG AA ✓ Pass

Any Text WCAG AA ✓ Pass

Large Text (above 18pt) WCAG AAA ✓ Pass

Any Text WCAG AAA × Fail

# Black Background



## Color Contrast Check

Large Text (above 18pt) WCAG AA ✓ Pass

Any Text WCAG AA ✓ Pass

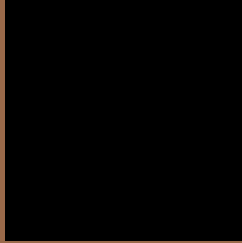
Large Text (above 18pt) WCAG AAA ✓ Pass

Any Text WCAG AAA × Fail

If you want to check with other color combinations, try the [Color Contrast Checker](#).



## Hex 9A6A4A Background



This preview shows how black text looks on a background with the Hex color 9A6A4A.



This preview shows how white text looks on a background with the Hex color 9A6A4A.

# Color Blindness Simulation

Color vision deficiency is a very complex topic, and I could not describe the different causes any better than Wikipedia does, so if you want to learn more, you should check out their [article about color blindness](#).

## Dichromacy



**Original Color**


9A6A4A

**Protanopia**

7F754E

**Deuteranopia**

8D7049



**Tritanopia**  
9D656D

# Trichromacy



**Original Color**

9A6A4A

**Protanomaly**

89714D

**Deuteranomaly**

926E49

**Tritanomaly**

9C6760

# Monochromacy



**Original Color**

9A6A4A

**Achromatopsia**

757575

**Achromatomaly**

827165

# CSS Examples

## Text

The CSS property to change the color of the text to Hex 9A6A4A is called "color". The color property can be set on classes, ids or directly on the HTML element.

This example shows how text in the color #9A6A4A looks like.

```
.text, #text, p{  
    color:#9A6A4A  
}
```

If you want to add a text shadow in that color use the text-shadow property, you can generate a text shadow directly with our [CSS Text Shadow Generator](#).

Here you see how black text with a 4 pixel #9A6A4A colored shadow looks like.

```
.shadow{ text-shadow: 4px 4px 2px #9A6A4A
}
```

## Border

The CSS property to change the border of an element to Hex 9A6A4A is called "border". The border property can be set on classes, ids or directly on the HTML element.

This example shows the color as border, it can be applied via the CSS property "border" or "border-color".

```
.border, #border, table{ border:4px solid
#9A6A4A }
```

If only the border color should be changed use the property `border-color`.

```
.border{ border-color:#9A6A4A }
```

If you want to add a box shadow in that color use:

Here you see how a box with a 4 pixel #9A6A4A colored shadow looks like.

```
.boxshadow{ -moz-box-shadow:4px 4px 4px  
4px #9A6A4A; -webkit-box-shadow:4px 4px  
4px 4px #9A6A4A; box-shadow:4px 4px 4px  
4px #9A6A4A }
```

# Background

The CSS property to change the background color of an element to Hex 9A6A4A is called "background". The background property can be set on classes, ids or directly on the HTML element.

```
.background, #background, body{  
background:#9A6A4A }
```

If only the background color should be changed can be used:

```
.background{ background-color:#9A6A4A }
```

This example shows the color as background, it is applied via the CSS property "background".

To optimize and compress your CSS code, you can use our [online CSS compressor and optimizer](#) based on csstidy. If you want to create a linear or radial gradient as background or border, check our [CSS Gradient Generator](#).



Hey! You found this booklet interesting? Support Converting Colors with the new Membership Option!

The pro membership hides all ads, plus gives you double the colors in the color bucket, and more awesome pro features!

**[Learn more, Memberships starting at \\$2.50/m!](#)**

**Follow me  
on Twitter!**

@ConvertingColor