

Converting Colors

Hex(9A755C)

Have a look what the booklet for
Hex(9A755C) contains.

Hex(9A755C)	3
<i>Conversions</i>	4
<i>Details</i>	6
<i>Harmonies</i>	11
<i>Previews</i>	23
<i>Color Blindness Simulation</i>	26
<i>CSS Examples</i>	29

Color

Hex(9A755C)

Conversions

Conversions Part 1

Format	Color
Hex	9A755C
RGB	154, 117, 92
RGB Percent	60%, 46%, 36%
CMY	0.3961, 0.5412, 0.6392
CMYK	0.00, 0.24, 0.40, 0.40
HSL	24°, 25%, 48%
HSV	24°, 40%, 60%
XYZ	21.6195, 20.3653, 12.9166
YIQ	125.2130, 30.0770, 0.0690

Conversions

Conversions Part 2

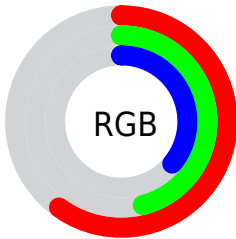
Format	Color
RYB	154, 134, 92
Decimal	10122588
CIELab	52.25, 11.04, 19.40
CIELCh	52, 22.321, 60.346
Yxy	20.3653, 0.3938, 0.3709
Android (android.graphics.Color)	4288312668 (0xFF9A755C)
YUV	125.2130, -16.3740, 25.2462
Hunter-Lab	45.1279, 6.5403, 14.6194

Details

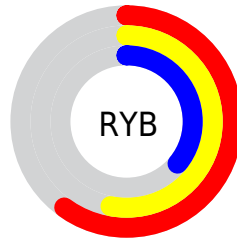
The Hex color **9A755C** is a dark color, and the websafe version is hex **996666**. A complement of this color would be **5C819A**, and the grayscale version is **7D7D7D**.

A 20% lighter version of the original color is **D2A98E**, and **65452E** is the 20% darker color. If you saturate the color by 10%, you get **9A6C4D**, and if you desaturate by 10%, it is **9A7E6B**.

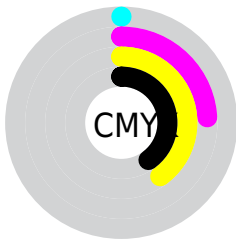
Distribution



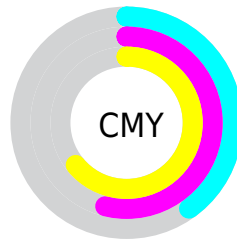
- Red (60%)
- Green (46%)
- Blue (36%)



- Red (60%)
- Yellow (53%)
- Blue (36%)



- Cyan (0%)
- Magenta (24%)
- Yellow (40%)
- Black (40%)



- Cyan (40%)
- Magenta (54%)
- Yellow (64%)

Brightness & Saturation Gradients

These gradients show how the Hex color 9A755C changes by changing the brightness by 10 percent. The first figure shows a shift by +10% for each color and the second figure -10%.

Similar to the brightness gradients but the following saturation gradients show a change of the Hex color 9A755C by changing the saturation by 10% instead.

 9A755C

 9A755C

FFFFFF

 7F5C44

 D2A98E

 65452E

 EEC4A9

 4C2E19

 FFE0C4

 341900

 FFFDE0

 1D0000

FFFFFFD

 000000

 9A755C

 9A755C

 9A6C4D

 9A7E6B

 9A633D

 9A877B

 9A592E

 9A918A

 9A501E

 9A9A9A

 9A470F

 9AA3A9

 9A3E00

 9AACB8

 9AB5C8

 9ABFD7

 9AC8E7

Harmonies

Analogous

The Analogous color harmony consists of three colors that are next to each other on the color wheel.



A3706A



9A755C



8A7B56

Triad

The Triadic color harmony groups three colors that are evenly spaced from another and form a triangle on the color wheel.



9A755C



4B877C



80789E

Complementary

The Complementary color scheme is a pair of colors which are on the opposite of each other on the color wheel.



9A755C



5C819A

Split Complementary

Split-complementary colors differ from the complementary color scheme. The scheme consists of three colors, the original color and two neighbors of the complement color.



657EA3



9A755C



41878F

Square

The Square scheme is like the rectangle color scheme, but the four colors are evenly spaced on the color wheel.



9A755C



608569



4C849D



957290

Rectangle

The Rectangle color scheme consists of four colors that form a rectangle on the color wheel.



9A755C



7D7F58



4C849D



777AA0

Sweetspot

The Sweet Spot groups the original color and five complimentary colors.



9A755C



C9BBB1



9A5C81



665D58



E6E6E6



666666

Same Dimension

The Same Dimension uses a secret algorithm to generate beautiful new colors.



9A755C



C99069



9A945C



4D4845



8C3900



0D0500

Inverse Universe

The Inverse Universe completely reimagines the original color for something new.



5C819A



69A2C9



5C629A



45494D



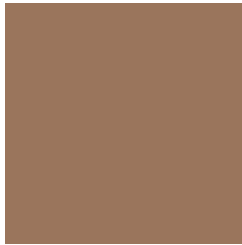
00548C



00080D

Previews

White Background



This preview shows how the Hex color 9A755C looks on a white background.

Color Contrast Check

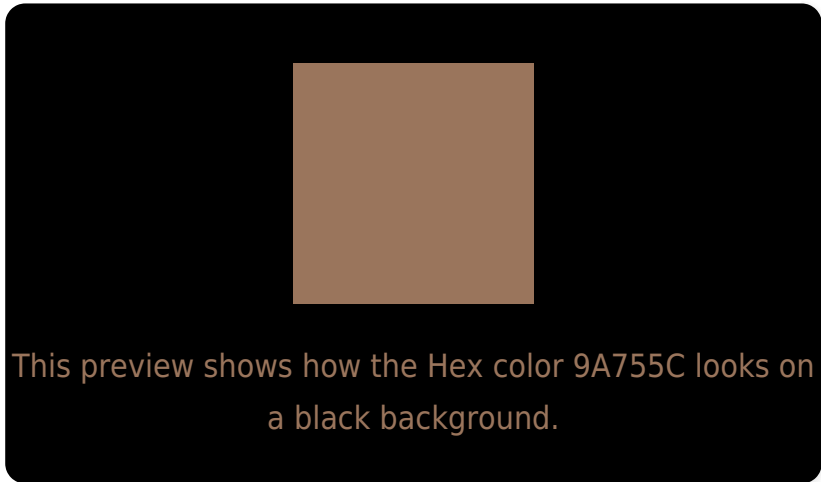
Large Text (above 18pt) WCAG AA ✓ Pass

Any Text WCAG AA × Fail

Large Text (above 18pt) WCAG AAA × Fail

Any Text WCAG AAA × Fail

Black Background



Color Contrast Check

Large Text (above 18pt) WCAG AA ✓ Pass

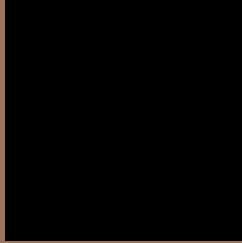
Any Text WCAG AA ✓ Pass

Large Text (above 18pt) WCAG AAA ✓ Pass

Any Text WCAG AAA × Fail

If you want to check with other color combinations, try the [Color Contrast Checker](#).

Hex 9A755C Background



This preview shows how black text looks on a background with the Hex color 9A755C.



This preview shows how white text looks on a background with the Hex color 9A755C.

Color Blindness Simulation

Color vision deficiency is a very complex topic, and I could not describe the different causes any better than Wikipedia does, so if you want to learn more, you should check out their [article about color blindness](#).

Dichromacy



Original Color
9A755C

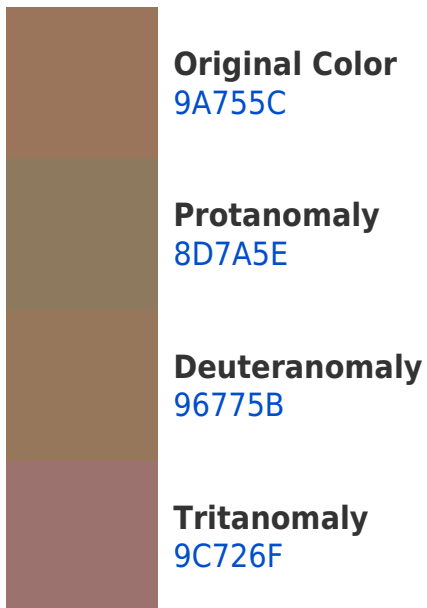
Protanopia
857D5F

Deuteranopia
94785B

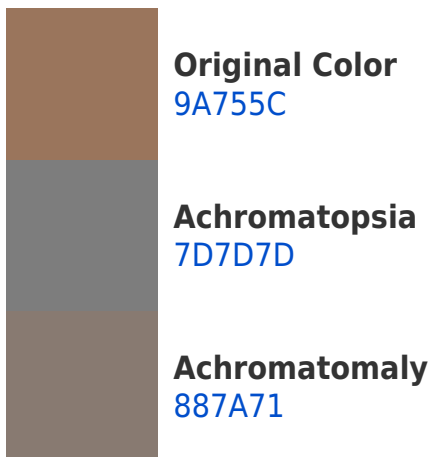


Tritanopia
9D717A

Trichromacy



Monochromacy



CSS Examples

Text

The CSS property to change the color of the text to Hex 9A755C is called "color". The color property can be set on classes, ids or directly on the HTML element.

This example shows how text in the color #9A755C looks like.

```
.text, #text, p{  
    color:#9A755C  
}
```

If you want to add a text shadow in that color use the text-shadow property, you can generate a text shadow directly with our [CSS Text Shadow Generator](#).

Here you see how black text with a 4 pixel #9A755C colored shadow looks like.

```
.shadow{ text-shadow: 4px 4px 2px #9A755C
}
```

Border

The CSS property to change the border of an element to Hex 9A755C is called "border". The border property can be set on classes, ids or directly on the HTML element.

This example shows the color as border, it can be applied via the CSS property "border" or "border-color".

```
.border, #border, table{ border:4px solid
#9A755C }
```

If only the border color should be changed use the property `border-color`.

```
.border{ border-color:#9A755C }
```

If you want to add a box shadow in that color use:

Here you see how a box with a 4 pixel #9A755C colored shadow looks like.

```
.boxshadow{ -moz-box-shadow:4px 4px 4px  
4px #9A755C; -webkit-box-shadow:4px 4px  
4px 4px #9A755C; box-shadow:4px 4px 4px  
4px #9A755C }
```

Background

The CSS property to change the background color of an element to Hex 9A755C is called "background". The background property can be set on classes, ids or directly on the HTML element.

```
.background, #background, body{  
background:#9A755C }
```

If only the background color should be changed can be used:

```
.background{ background-color:#9A755C }
```

This example shows the color as background, it is applied via the CSS property "background".

To optimize and compress your CSS code, you can use our [online CSS compressor and optimizer](#) based on csstidy. If you want to create a linear or radial gradient as background or border, check our [CSS Gradient Generator](#).

Hey! You found this booklet interesting? Support Converting Colors with the new Membership Option!

The pro membership hides all ads, plus gives you double the colors in the color bucket, and more awesome pro features!

[Learn more, Memberships starting at \\$2.50/m!](#)

**Follow me
on Twitter!**

@ConvertingColor